

# **Xml typeview tips and tricks**

## Table of Contents

1	Creating a xml typeview .....	3
2	How to deploy a xml typeview .....	4
3	Validating a xml typeview using Cooktop.....	5
4	Using the XMLTypeViewsSDK-WS.jar workstation plug-in.....	9
4.1	Installation.....	9
4.2	Usage.....	9

# 1 Creating a xml typeview

The xml typeview must comply with the wily.typeviews schema which is included in the typeviewers.xsd file.

A “hello world” typeview could look like this:

```
<?xml version="1.0"?>
<TypeViewerSet xmlns="wily.typeviews" namespace="wily.standard"
version="1.0">
    <TypeViewer id="hello-world" title="Hello World" tab-order="1"
supported-items-specifier=".*">
        <Panel layout="BorderLayout">
            <Label text="Hello World!" constraint="Center"/>
        </Panel>
    </TypeViewer>
</TypeViewerSet>
```

**Tip #1:** Verify that the typeview xml complies with the wily.typeviews schema. A free software that can perform the verification is Cooktop at <http://www.xmlcooktop.com/> . For details, see the “Validating a typeview xml using Cooktop” chapter later in this document.

**Tip #2:** It is really helpful to have some knowledge about Swing to create a typeview. A good resource on Swing is the [Swing java tutorial](http://java.sun.com/docs/books/tutorial/uiswing/TOC.html) (<http://java.sun.com/docs/books/tutorial/uiswing/TOC.html>). In particular, the [page about layouts](http://java.sun.com/docs/books/tutorial/uiswing/layout/visual.html) (<http://java.sun.com/docs/books/tutorial/uiswing/layout/visual.html>) is extremely useful.

**Tip #3:** A number of xml typeviews are included in the xmlTypeViews.zip file that can be downloaded here:  
<https://wilynet.wilytech.com/entry.jspa?categoryID=109&entryID=2541>

**Tip #4:** The XMLTypeViewsSDK-WS.jar workstation plug-in is extremely helpful to author xml typeviews. Changes in a typeview file are taken into account only when the EM is restarted. The XMLTypeViewsSDK-WS.jar workstation plug-in reloads typeviews automatically after they have changed. The XMLTypeViewsSDK-WS.jar plug-in is included in the xmlTypeViews.zip that can be downloaded here:  
<https://wilynet.wilytech.com/entry.jspa?categoryID=109&entryID=2541>. For details, see the “Using XMLTypeViewsSDK-WS.jar workstation plug-in” chapter later in this document.

**Tip #5:** Use the supported-items-specifier attribute in the TypeViewerSet tag to select the nodes under which the xml typeview is going to appear.

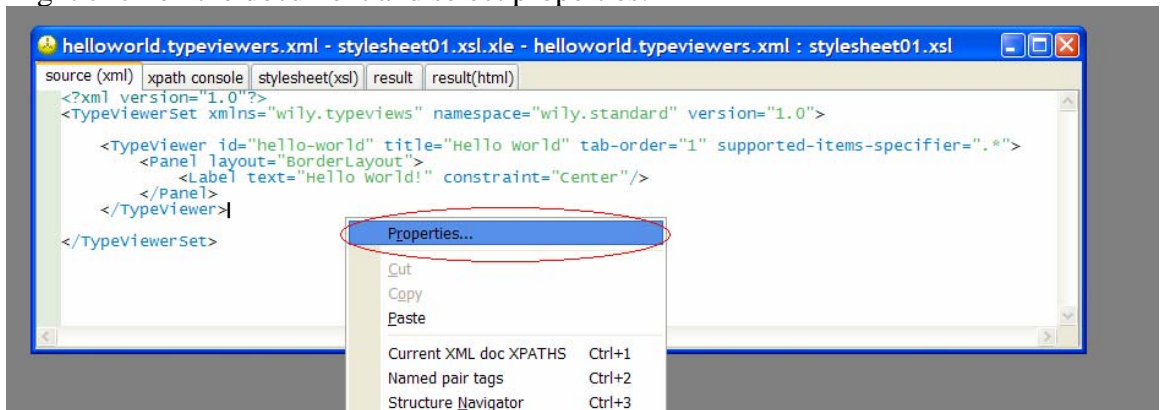
For example: with supported-items-specifier="Servlets" a xml typeview is going to appear only under the node Servlet in the investigator tree

## **2 How to deploy a xml typeview**

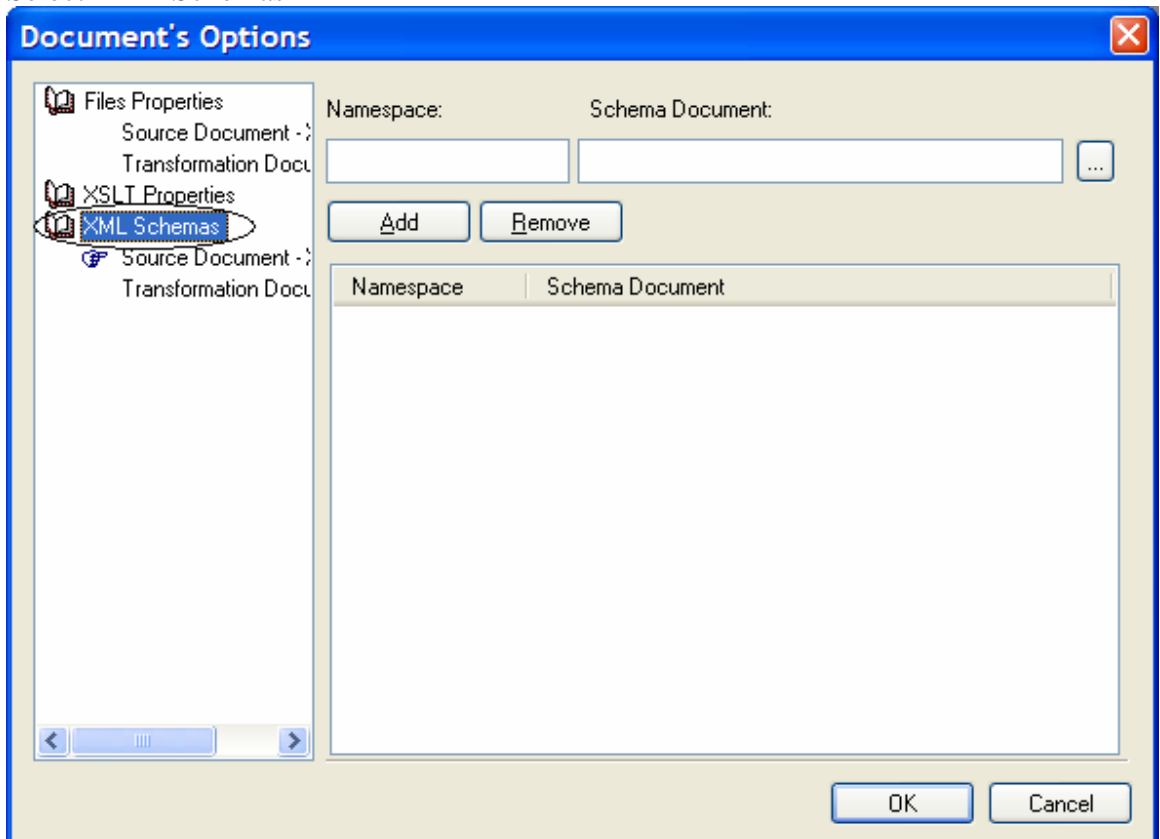
1. Create the directory \$INTROSCOPE\_EM\_HOME/ext/ddtv if it does not already exist
2. Copy the typeview xml file in the directory \$INTROSCOPE\_EM\_HOME/ext/ddtv
3. Restart the EM

### 3 Validating a xml typeview using Cooktop

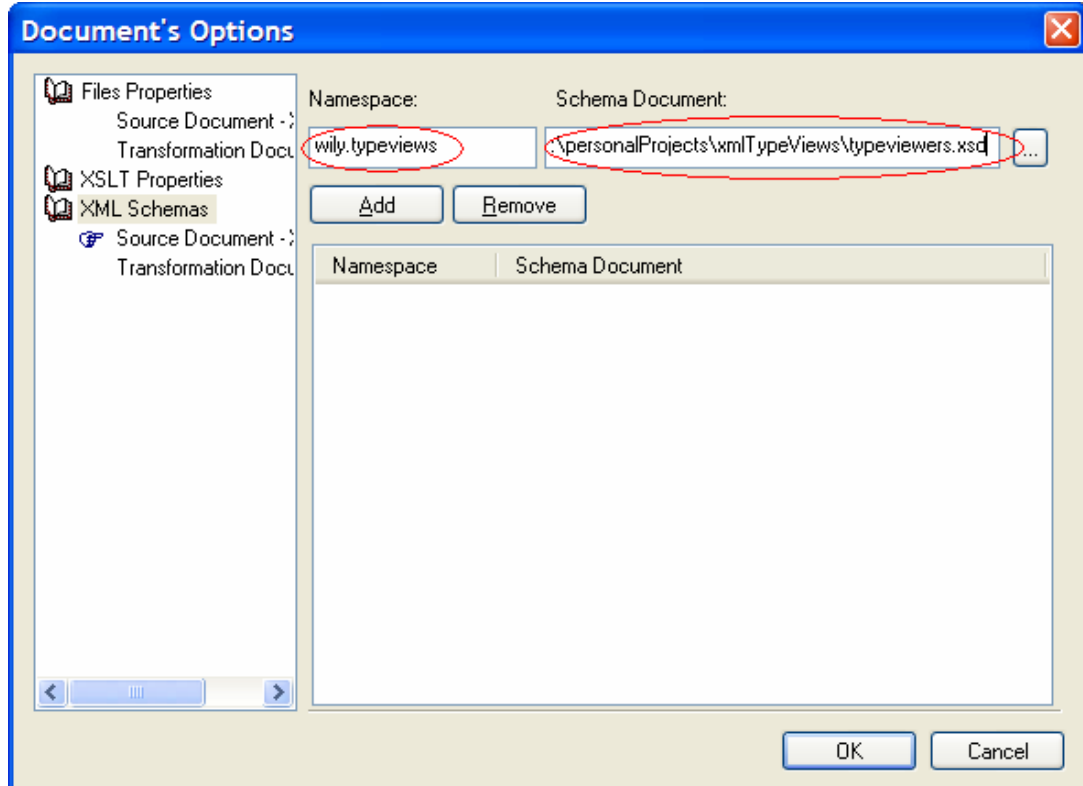
1. Right click on the document and select properties:



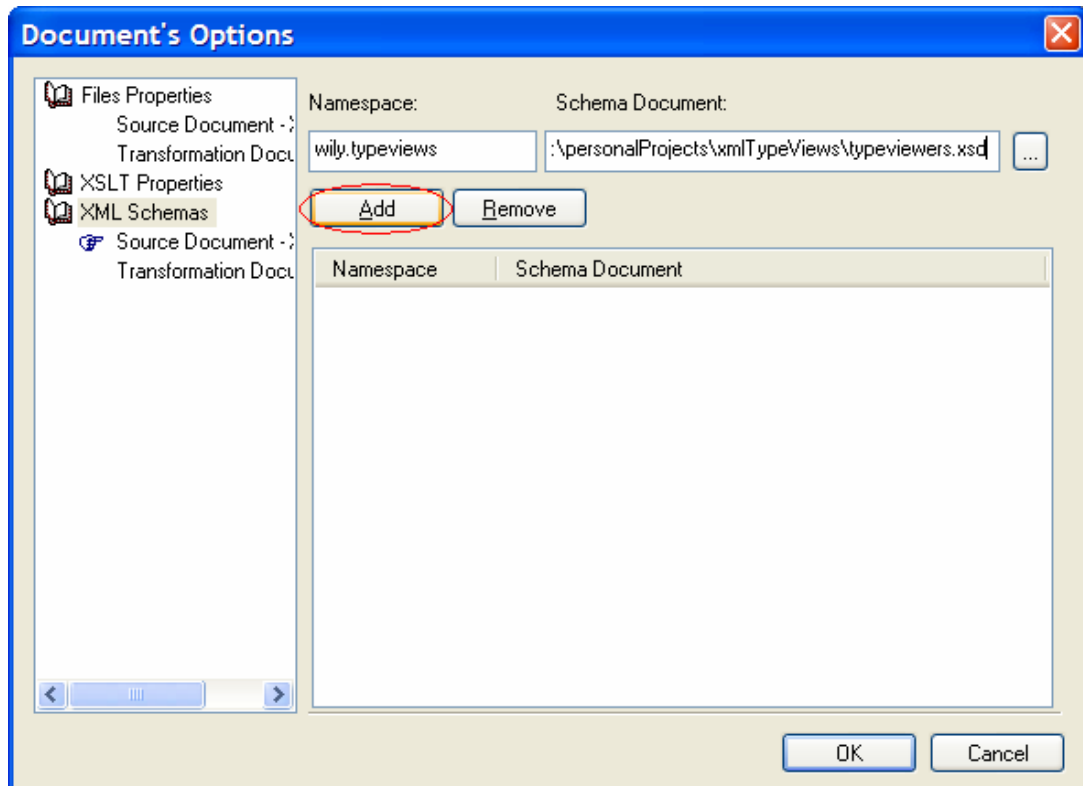
2. Select XML Schemas



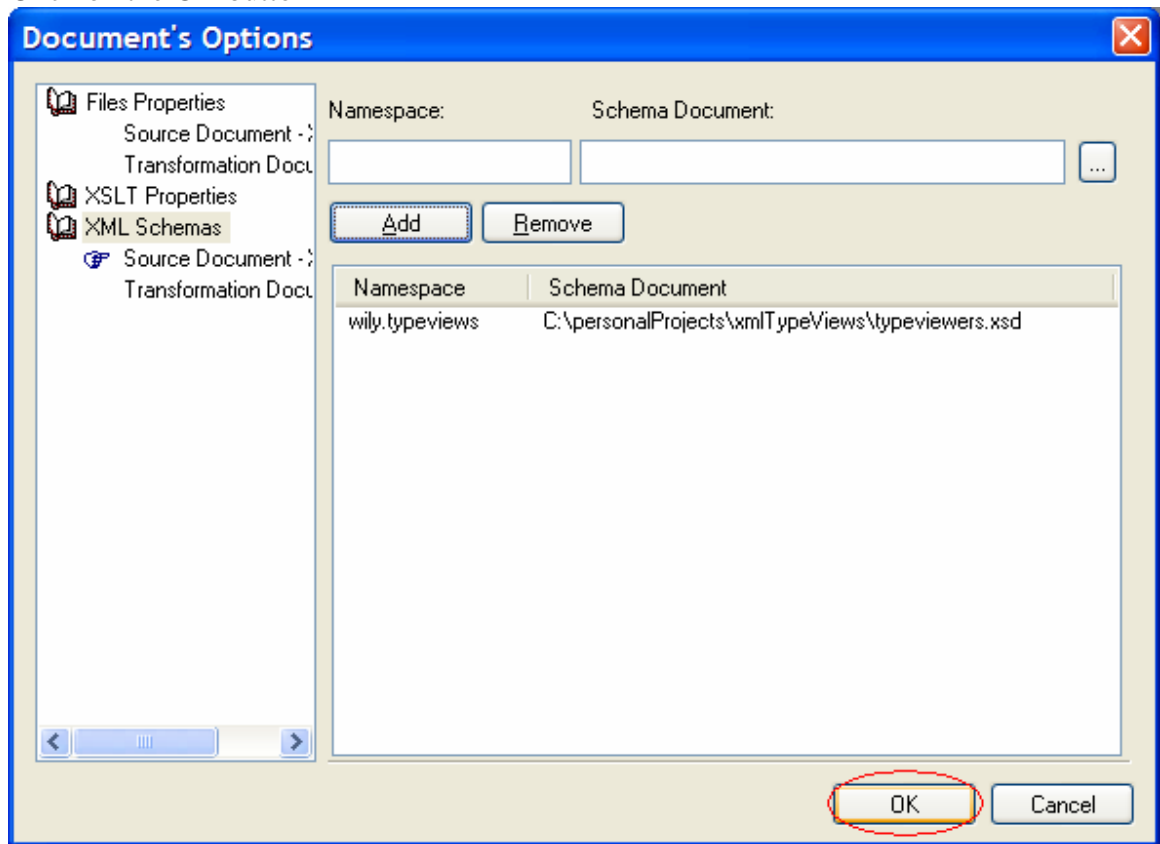
3. Enter wily.typeviews in the namespace field and the path to typeviewers.xsd in the Schema Document field



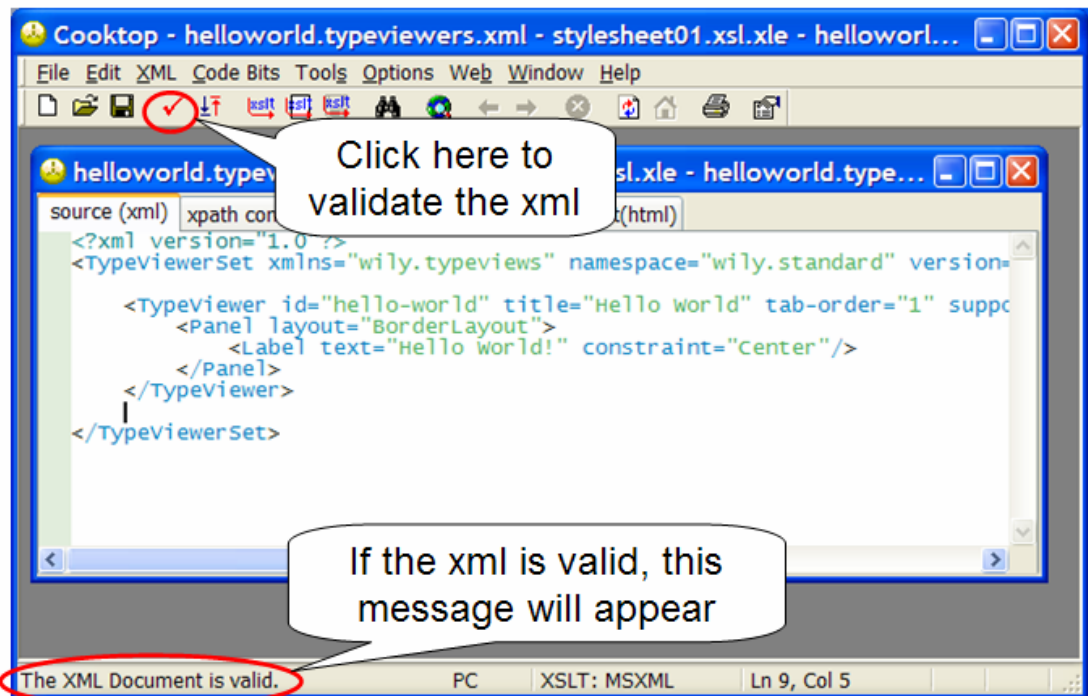
4. Click on the add button



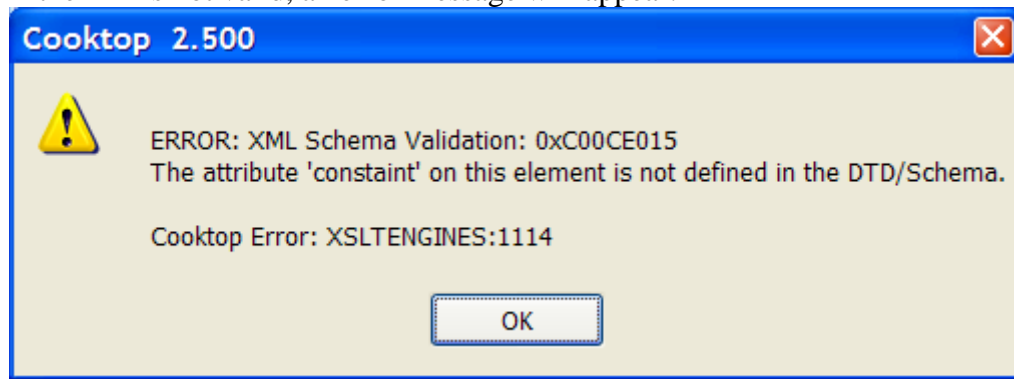
5. Click on the OK button



- 6.



7. If the xml is not valid, an error message will appear:





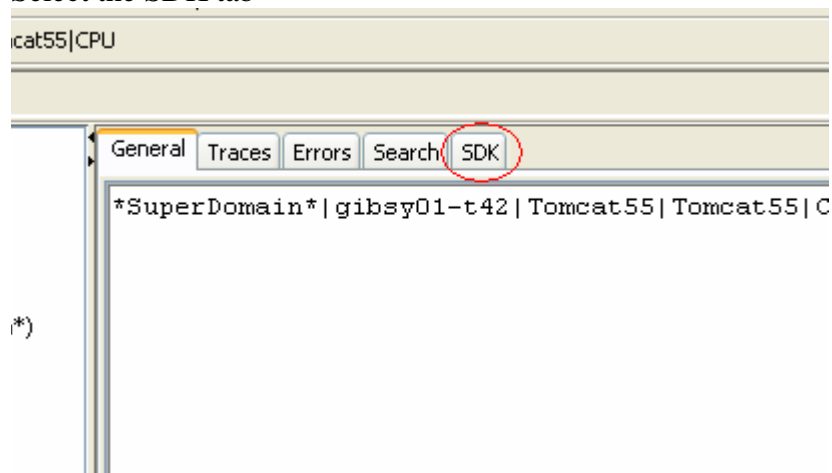
## 4 Using the XMLTypeViewsSDK-WS.jar workstation plug-in

### 4.1 Installation

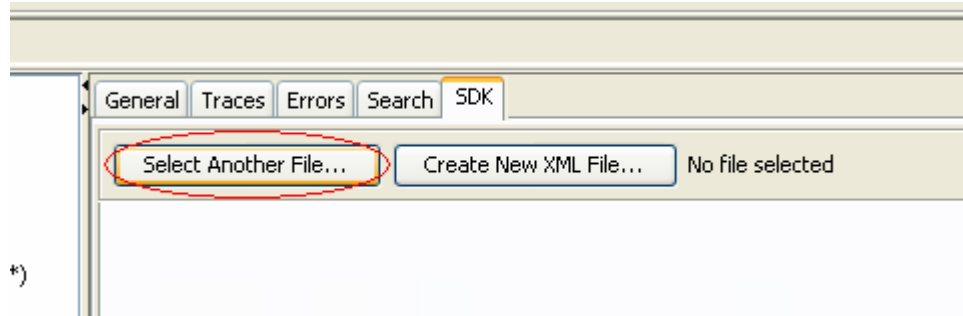
1. Copy the XMLTypeViewsSDK-WS.jar file in \$INTROSCOPE\_EM\_HOME/ext
2. Restart the EM

### 4.2 Usage

1. Start the Introscope Workstation
2. Open an investigator
3. Select a node under which the typeview should appear (see Tip #5 in Creating a TypeView at the beginning of the document)
4. Select the SDK tab

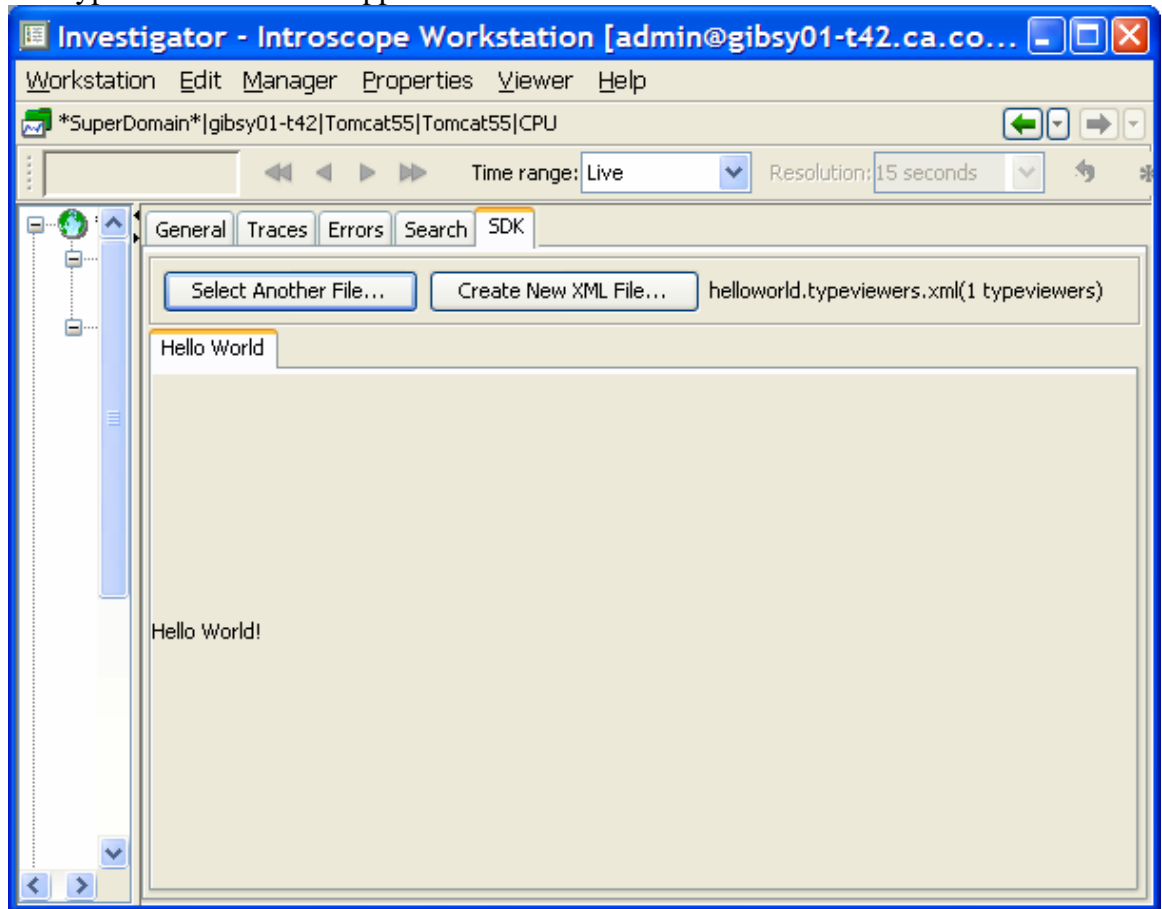


5. Click on the “Select Another File” button



6. Select the typeview xml file and click ok

7. The typeview should now appear in the SDK tab



8. If you change the xml, the typeview in the SDK tab should be automatically updated.