



Modernizing CA 2E and RPG Apps using Plex, CM M3 and WebClient in France



Agenda

- CM First France / Belharra Overview
- Migration Technology
 - CA 2E to CA Plex
- Demo

CM First Group

- Information Technologies Services and Product Company
- Focus on Application Modernization on IBM environments
- Headquartered in Switzerland, Operations in USA, Italy and **France**
- 35 employees / over 400 customers
- CA Technologies for CA Plex / CA 2E / CA Repository
 - Sales, Services, CA SMART Certified Products
- CM First Products add value to CA Technologies Products
- Worldwide Sales through partner network

CM First France



- Based in Paris (La Defense Business Center)
- Approx 80% 2E, 20% Plex in Country

Belharra Overview



- Location: Bassussary, south of Bordeaux (south west of France)
- Activity: IT service company specialized in IT modernization, to improve productivity and performance of mid-market companies
- The team: 30 persons, composed at 90% of IT engineers

Belharra Project Requirements



- Exportation of nutritional products with specialized ERP developed in 2E
- Why did they choose CA/Plex and webclient:
 - Robustness and development rapidity
 - CM M3 service for the “bridge” between 2E and Plex
 - Universal access using light laptops



CA 2E 5250 to Web

Options

Screen Scrape

- Limited

Rewrite

- Cost

Model → Source

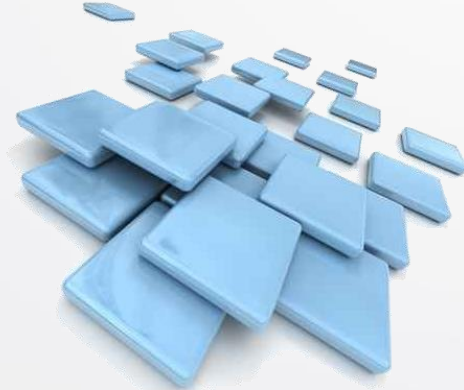
- Maintainability

Model → Model

- + Learning curve
- + Cost
- + Refactorability

The CM M3 Solution

- *CA Plex, with Java primary target, RPG and .NET secondary targets*
- *Total Solution - Highly automated and maintainable (caveat: 2E model objects only)*



The Right Way

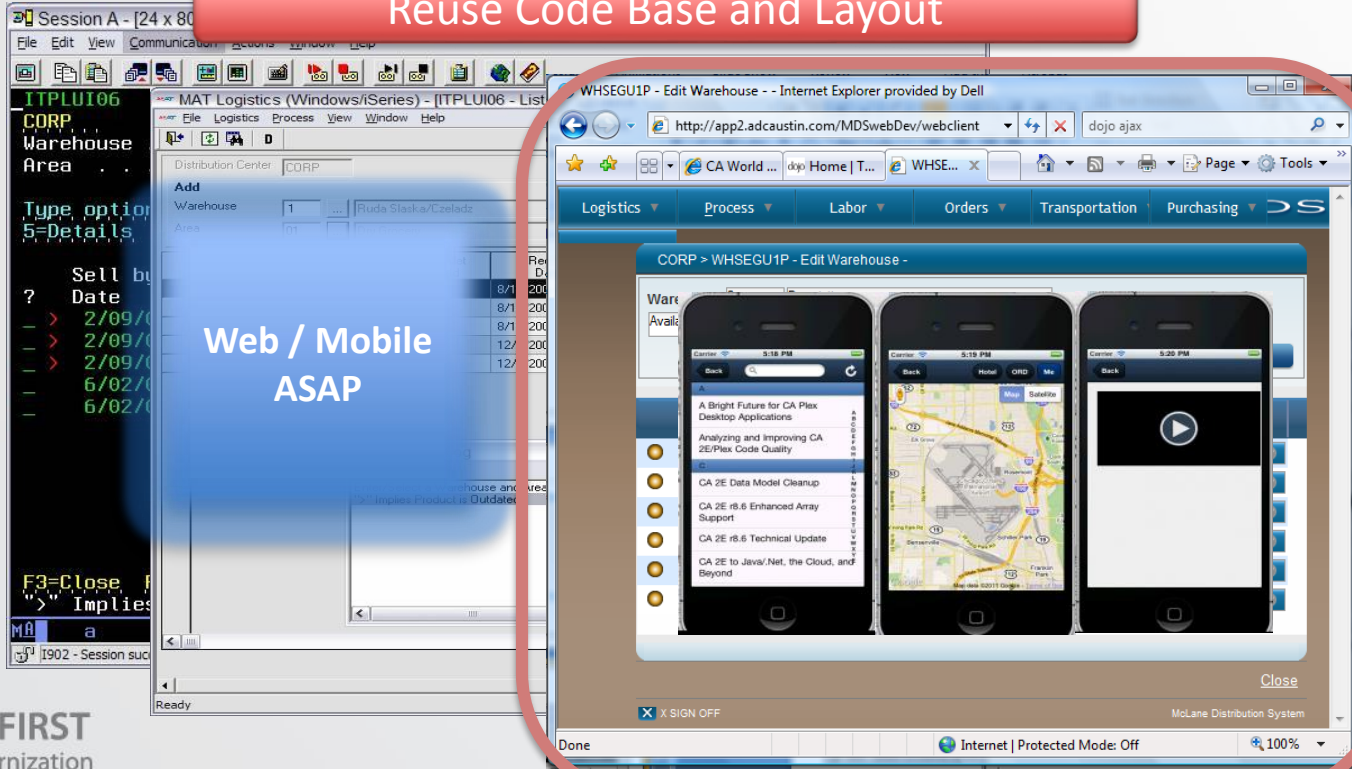
- **Effective** modernization requires:
 - High levels of automation, approach 100%
 - Maintainable, verified, tested result
 - Web applications and SOA out of the box
- A complex problem to solve



Modernization to Web and Mobile

Reuse Code Base and Layout

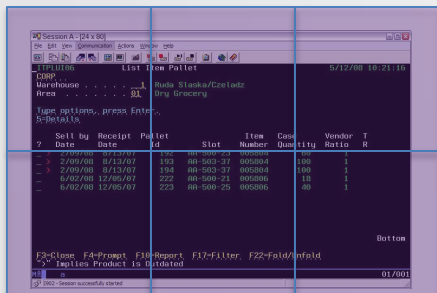
Web / Mobile
ASAP



CM M3 Process

Full Model Migration

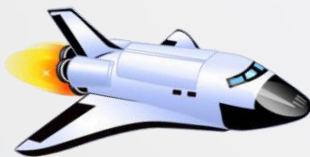
Original 5250



The screenshot shows a 5250 terminal window with a title bar 'Session A: (24 x 80)'. The main content is a table with columns: Date, Receipt, Pallet, Slot, Item, Case, Vendor, and T. The table contains three rows of data. At the bottom, there are menu options: F4=Prompt, F10=Report, F12=Full, F22=Field, and F23=Field.

Date	Receipt	Pallet	Slot	Item	Case	Vendor	T
7/09/00	8/13/00	103	00-500-31	005004	100	1	
7/09/00	8/13/00	104	00-500-31	005004	100	1	
6/02/00	12/05/00	222	00-500-21	005006	10	1	
6/02/00	12/05/00	223	00-500-22	005006	40	1	

XML -> Plex Model
APIs



- CA 2E (Synon) models & generated applications
- Native:
 - RPG
 - COBOL
 - CL/i5/OS artifacts

- Manual - Native code Rewrite
- Worksoft Certify regression testing

New Environment
(SOA & Web)



CM M3 – Technology has Matured

- Fine-grained control using Model APIs
 - Restart capability
- Good coverage of all non-source based 2E objects except PRTXXX
 - Guaranteed
- Standardized Java Target
 - Portable to all platforms and databases
 - Solves 2E working storage complexities / no state server
 - Enables Web and Mobile out of the box
 - Tunable and scalable performance

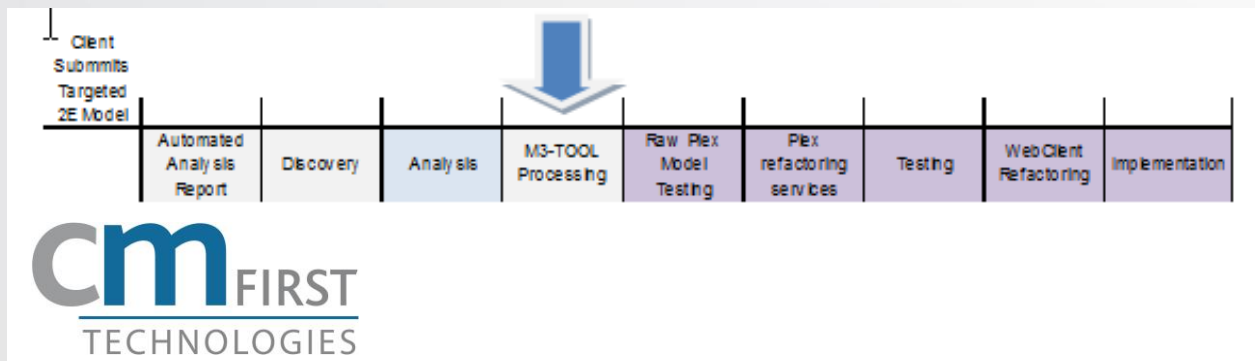
CM M3 – Current Technology

- Layered Capability
 - Migrate Schema Only
 - Migrate Server Functions Only
 - Migrate Subsystem Only
 - Keep using 2E
- Flexible Patterns
 - Based on CA Patterns, using standard inheritance
 - Screens be refactored into Hierarchy's, Tabs, Wizards, Dashboards



Process

Migration Process



Analysis Goals

- Determine 2E object counts and issues at a high level – no charge
- Determine cost and timeline migrate 2E Client models to CA Plex
 - Supported 2E model object types only
- Analyze non-migrate-able functions

M3 Plan Assumptions

M3 includes a fully migrated and guaranteed 2E Model Plex Model of database schema and most 2E function types.

Specifically Excluded:

- User Source (EXCUSR SRC) functions
- User Programs (EXCUSR PGM) functions
- Print File (PRTFIL) functions
- Print Object (PRTOBJ) functions

Example Model Summary

- 1 model - XORGMDL
 - Model Summary
 - 1020 Total Functions
 - 77 Print File / Print Object
 - 28 Execute User Source
 - 62 Execute User Program
 - Remainder migrate-able – using 900 for costing
 - 185 Physical Files
 - Technical Concerns
 - xxxxxx

Fixed Pricing Model

- Set up fee per model, \$25-45K
- \$10-15/USD per function migrated
- Time and materials for non-standard migration
 - User Source of any type
 - Refactoring
- Guaranteed result



Demo

CATEGORIE ASSURANCE

Indiquez vos options, puis appuyez sur Entr{e.

Warning: Function is LOCKED, changes made cannot be applied

EDIT FUNCTION OPTIONS

Op: JDRHODES SJDRHODEA1 11/14/13 6:21:20
XDUXM2

Function name . . : Saisie Type. : Mettre @ jour fichier
Received by file. : CATEGORIE ASSURANCE Acpth : RTV + V
Header/footer . . : *ECRAN DUPOUY 80c 10 1C <-Implicitly set by mdl default

OPTION SEL VALID VALUES

Cr{er enregistrement . . :	<u>O</u>	(<u>O-Oui</u> , N-Non)
Modifier enregistrement :	<u>O</u>	(<u>O-Oui</u> , N-Non)
Supprimer enregistrement:	<u>O</u>	(<u>O-Oui</u> , N-Non)
Mode programme dynamique . . :	<u>O</u>	(<u>O-Oui</u> , N-Non)
S{lection de s/fichier . . :	<u>O</u>	(<u>O-Oui</u> , N-Non)
Confirmer invite :	<u>N</u>	(<u>O-Oui</u> , <u>N-Non</u>)
Valeur initiale de confirmat	<u>M</u>	(M-MDLVAL, O-Oui, <u>N-Non</u>)
Contrôle de validation . . :	<u>A</u>	(M-Maître, E-Esclave, <u>A-Aucun(e)</u>)
Si barre/s{lec. quel type?:	<u>M</u>	(M-MDLVAL, <u>A-Barre_s{l</u> , D-DDS_bar./menu)
Mode de g{n{ration . . . :	<u>A</u>	(M-MDLVAL, <u>D-DDS</u> , S-SQL, A-ACPVAL)

More...

F3=Exit F5=Select header/footer F10=All options

EDIT ACTION DIAGRAM

LOCKED

XDUXM2

CATEGORIE ASSURANCE

FIND=>

Saisie

Action Diagram Summary

X=Select Z=Zoom T=Top

> Saisie

> Initialiser

Initialiser contrôle de sous-fichier @ partir des param}tres

> D{finir mode de programme

.-CASE

.-Enregistrement de FBD trouv{

PGM.*Mode du programme = CND.*MODIFIER

.-*OTHERWISE

PGM.*Mode du programme = CND.*AJOUTER

.-ENDCASE

More...

F3=Prev block

F12=Unzoom

F13=Exit

F16=Change dates

F21=Imp names

Hide/Show blocks . :


F2=ACT

F4=CAS

F6=ITR

F8=SEQ

F10=TXT



About

SEA2EFR
← SEA2EFR

Log Out

Code Catégorie Filter

☐ Select All

CA	Libellé	Abrev.	Annul.
<input type="checkbox"/> XX	est Belharras	TestBelh	
<input type="checkbox"/> 01	MARCH.DIVERSES NDAs	DIV NDA	
<input type="checkbox"/> 02	FRIGO NEGATIFSS	FRIGO NEG	
<input type="checkbox"/> 03	FRIGO POSITIF OEUFs FROM.	FR.POS O.F	
<input type="checkbox"/> 04	TOUS FRUITS LEGUMES	FRUIT,LEG.	
<input type="checkbox"/> 05	MORUES	MORUES	
<input type="checkbox"/> 06	MARCH DIV NDA +TRANSBORD	DIV+TRSBOR	

F3=Exit F9=Création

SupprimerLibérer

OKPromptChange ModeResetExit

<http://localhost:9080/belharraweb/WebClientServlet>

Q&A, Discussion

<http://cmfirstgroup.com>

