



## **QAT Wizard – A must have tool for every Gen shop**

### **Session # 27**

October 30, 2007 9:45 a.m. – 10:45 a.m.

Rollie Stephens, QA Technologies

## **What Is QAT Wizard?**

- A Suite of tools used to build custom Wizards for CA Gen.
  - Starter Pattern Model (\*Enhanced)
  - Pattern Test Menu (\*New)
  - Wizard Interview Manager (\*New)
  - QAT Wizard Plug-in (\*Enhanced)
  - Notes Manager (\*New)
  - QAT ReFactor (\*New)



## What Is QAT Wizard?



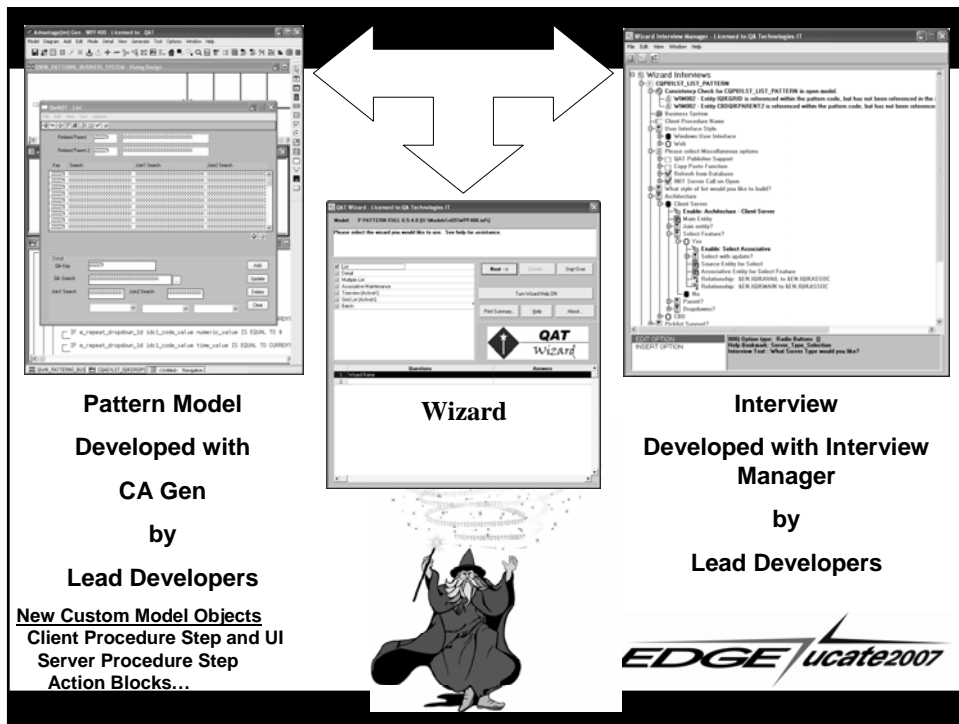
**The Wizard Control Panel is used to launch the various Wizard tools.**

**EDGE** *ucate2007*

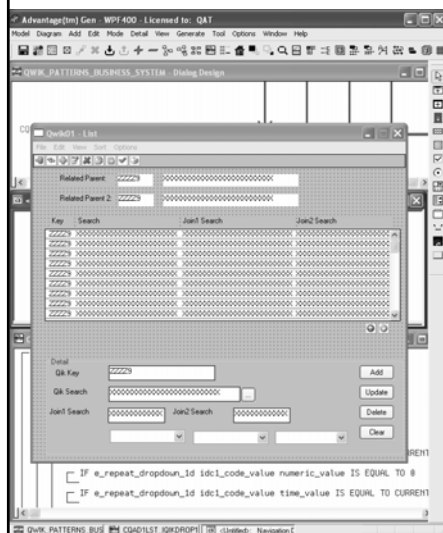
## QAT Wizard Benefits

- Build working applications from custom patterns that apply shop standards automatically - in minutes
- Raise productivity by a factor of 5+
- Raise quality and consistency by automating the initial build from custom patterns
- Reduce standards training cost by 50%+

**EDGE** *ucate2007*



## Develop Pattern Model



- A CA Gen Model
  - Pattern applications coded against supplied pattern ERD (substituted during Wizard)
  - Wizard Options and Wizard Actions used to provide optional code and advanced customization

## Start from the QAT Pattern Model and Customize

- A robust and proven development standard and a set of standard patterns with many options
- Patterns Include List, Detail, Associative, Multiple List, Grid, Tree, Batch and more...
- Support for Web and Windows interfaces
- Support for Client Server and CBD server architectures
- Support for Hub and Operation Server Styles
- A working example with advanced Wizard Options and Wizard Actions working against pre-defined Wizard Interviews



## Develop Pattern Model Wizard Options

- Used to create optional code that gets built only when requested during the Wizard Interview
- For example, List with parent, List without parent
- Wizard Options are simple to implement
  - Just write and IF Statement to surround the optional code



# Develop Pattern Model Wizard Actions and Options

- Action Diagram Notes and corresponding statements that direct the Wizard to customize code
- Wizard Action Notes start with "<WIZARD\_ACTION\_"
  - Change Group View Sizes
  - Delete Views and Attributes
  - Synchronize Views
  - Change Domain
  - Generate Set Statements
  - Prompt for Values
  - Prompt for Pstep and Action Blocks
  - ... More



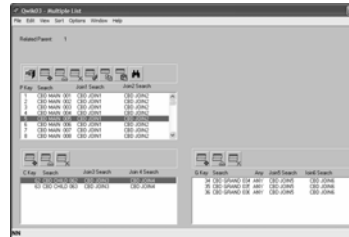
List



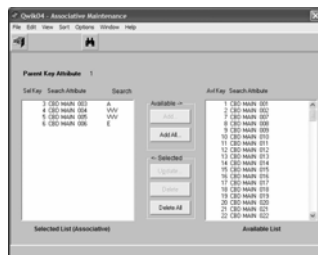
Detail



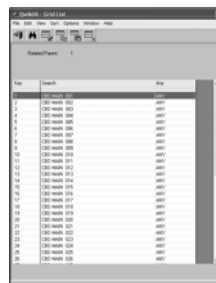
Multiple List



Associative



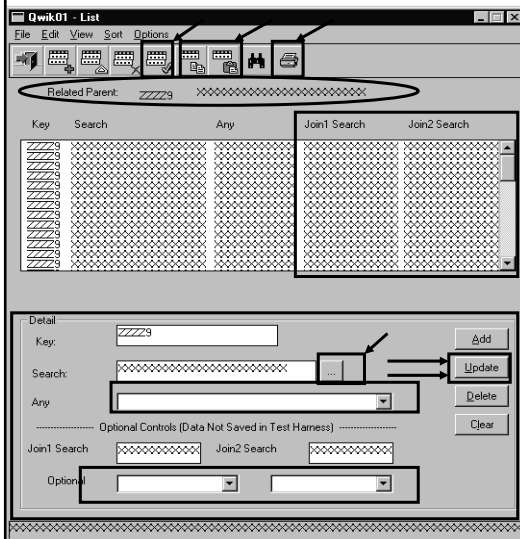
Grid



Treeview



## Multiple Options Supported

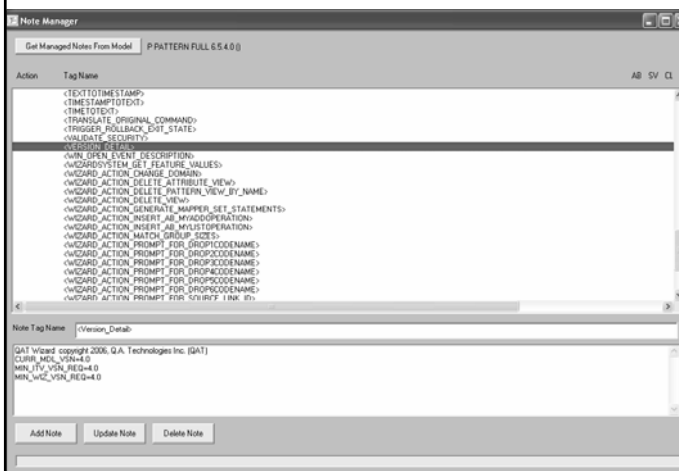


### List Wizard Options:

- Related Parent
- Embedded / Separate etail
- Multiple Row update
- Cycle Update
- Select Associative
- Copy / Paste
- Report Generation
- Dropdowns (Up to 3)
- Pick Lists (Up to 3)
- Multiple Table Support

EDGE/ucate2007

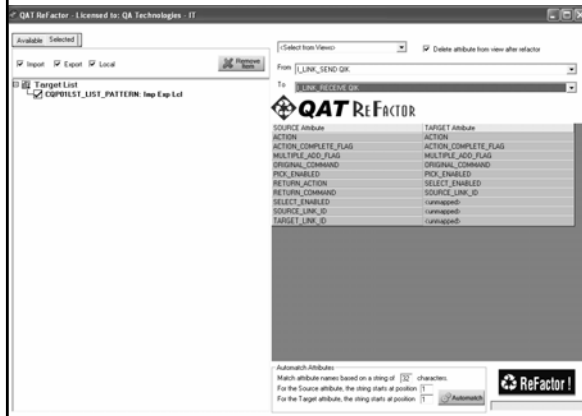
## Notes Manager



- A New Plug-in for CA Gen That Allows For Common Notes to be managed with consistency across an entire model.

EDGE/ucate2007

## ReFactor Entities/Work Sets

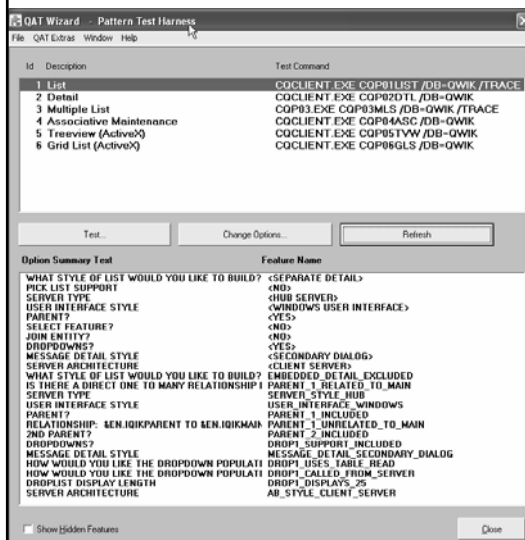


### ■ QAT ReFactor

- Automatically substitutes views referenced in existing code Between Unlike Types According to Defined Mappings
  - Change All Occurrences of a View to any other View (Unlike Types)
  - Targets Single Action Block, Entire Action Block Chain or Entire Model

EDGE/ucate2007

## Pattern Test Menu



- Runtime Test Harness is a Critical Success Factor
- This automated test menu supplied in the starter model
  - Current Wizards and Test Settings are returned from the Wizard Database
  - Use Interview Manager to change the current test settings
  - Current settings are retrieved in each pattern using supplied functions and this code gets removed when the Wizard builds the target application code

EDGE/ucate2007

# Wizard Interview Manager



## Visual Wizard Interview Designer

- Decisions (Custom Values)
- Entry Fields For Custom Values
  - Used to customize code (i.e. Group Sizes etc.)
- Prompting for Model Objects
  - Entities(Spec and/or Implementation), Attributes, Relationships and Business Systems
- Option Conditions (Skip Question Based on Interview Decisions)



# Interview Help

## Create Context Sensitive Help Pages for the Interview as Word or PDF Documents

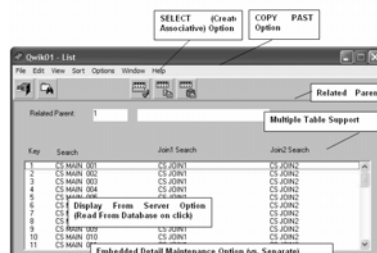
### List Pattern

**General Discussion:** This pattern is used for all general purpose entity lists. Several options are available to modify the features and style of the pattern.

#### 2 Major Customization Options:

- 1) This pattern can produce a standard Advantage Gen list with or without embedded detail. The embedded detail enables the list to perform full maintenance without any other cooperating windows.
- 2) This pattern can also produce a grid list (using ActiveX technology) for full maintenance through a spreadsheet look and feel.

(Standard Advantage Gen List)



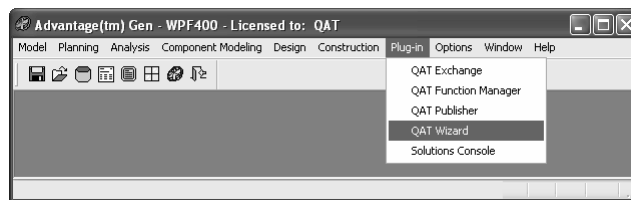
- Interactive Help – Gives help for the current option during the interview
- Online Help – Gives details about the overall product





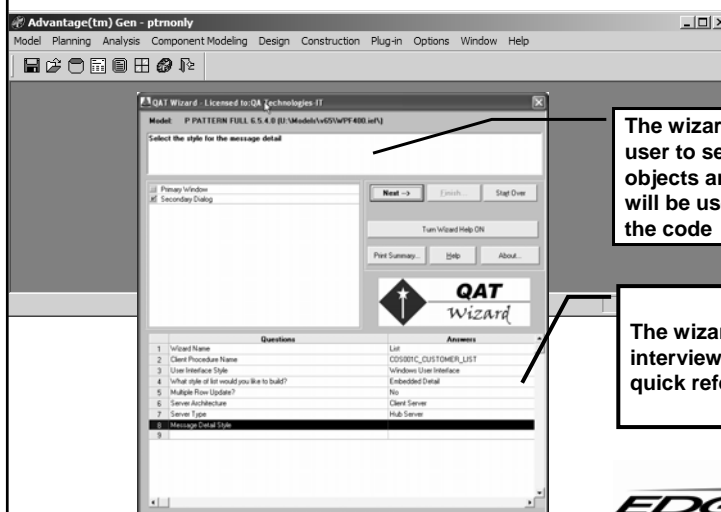
## QAT Wizard Plug-in

- The wizard is delivered as a Plug-in for CA Gen
- Use the Plug-in menu to start the Wizard



**EDGE** *ucate2007*

## QAT Wizard Plug-in



The wizard prompts the user to select model objects and options that will be used to customize the code

The wizard summarizes the interview for printing and quick reference

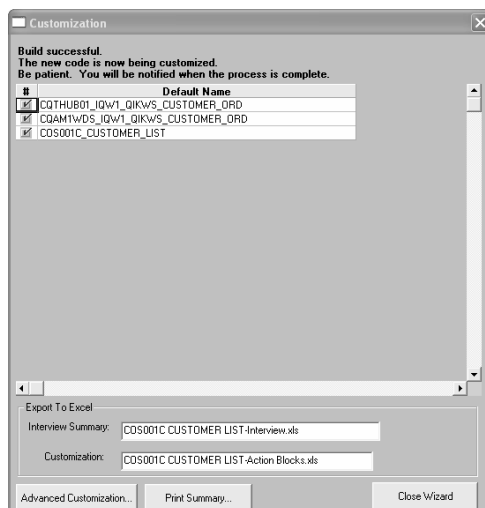
**EDGE** *ucate2007*

## QAT Wizard Plug-in

- Executes the Interview against the Pattern Model
- Prompts for objects to be selected from the model
- Prompts for entry fields and choices as defined in the interview



## Customization



- The wizard presents a list of new objects that get created
- The summarize interview questions and answers
- Print and/or Export Summaries to Excel

EDGE/ucate2007

## Value / USE Statement Prompts

- Automatic Prompting
- Prompt for literal values like System Acronym
- Prompts for inserting of existing Psteps and Action Blocks

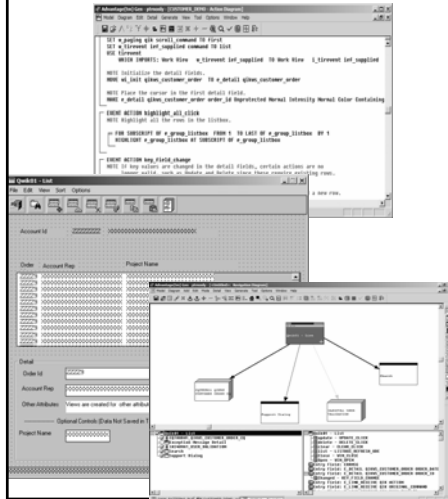
**EDGE** *ucate2007*

## Advanced Customization

- Insert new CASE statements with associated Note and USE statements to call existing action blocks that were not planned as prompts in pattern
- Works for Client and/or Server Procedure Steps

**EDGE** *ucate2007*

## End With A Functioning Window or Web Page



- The wizard produces fully customized transactions

- Client Procedure
- Server Procedure(s)
- Action Blocks
- Window / Page
- Dialog boxes

- The new transaction is ready to package and test. Business rules can now be applied as needed.

**EDGE/ucate2007**

## EDGE Needs Your Feedback!

- Please complete the conference evaluations
- Your feedback/suggestions are necessary to continue to bring you top-notch events
- Thank You for Coming – See you in 2008!

**EDGE/ucate2007**