

# What's New: CA Performance Management 2.4

Introducing our Latest Release

January 2015



# Release Overview

100% Delivered – On Time

## CA Performance Management 2.4

### Why you should upgrade to this release

- Key new features resolve challenges deploying CA Performance Management for mega scale infrastructures and will encourage more usage
- We have introduced a new way to increase speed to get the right data into the system with our new Out of Band Certification Support
- We are innovating new ways to increase speed to get the right data out of the system the way your users want to consume it – with OpenAPI

### User Experience

- ✓ Improved usability & Customer Enhancements
- ✓ New Look and Feel to improve visualization of Dashboards and PDFs
- ✓ Site/Group Navigation Improvements
- ✓ New OpenAPI interface for simple access to configuration & data extraction
- ✓ New OpenAPI fast TTV with SmartQuery Builder
- ✓ Improve Dashboard Visualization of Events with new filtering controls
- ✓ Improve Event Notification with additional event attributes and more flexible forwarding rules

### Core Processing & Storage

- ✓ Enable faster customer access to new certifications w/ out-of-band cert support
- ✓ Allow Non-DA Administrators to Configure Threshold Monitoring
- ✓ Improve Workflows to Configure Thresholds & Event Processing on all subcomponents
- ✓ Improve component level poll controls w/ enhanced filtering for all subcomponents

# Usability and Customer Enhancements

1. CSS updates for freshened look and feel
2. UI indication on dashboards to easily identify “pinned” views (those with their context fixed at the view level)
3. Site Path (breadcrumbs) when site selected in dashboard
4. Auto-expand group tree to place current selected group in view when changing groups.
5. Enhance Site group information displayed on Context page.
6. Enhance Site list views with option to show related (sibling, child) sites.
7. Changing dashboard layout should not remove all views
8. Allow non-integer threshold values in scorecards
9. Offer dynamic URLs in CAPC browser view (NPC had this)
10. Improve CSV Export formatting (offer raw data mode)
11. Increase max chart count in MultiTrend views
12. Improve layout for PDFs (focused changes only).
13. Improved Dashboard Granularity Controls
14. Privilege OnDemand Reports
15. Auto Adjust Y Axis on Trend views to improve visualization of data

# New Look and Feel

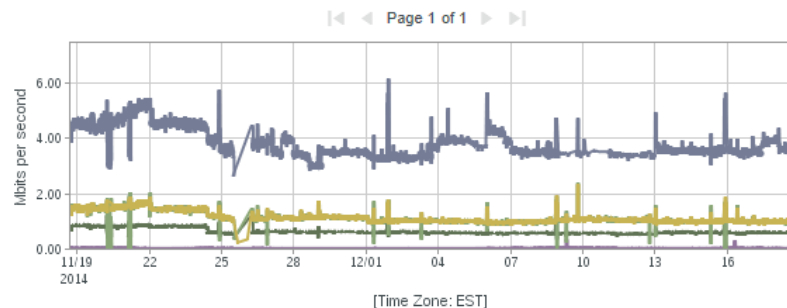


## Trend Views - Improved Look and Feel

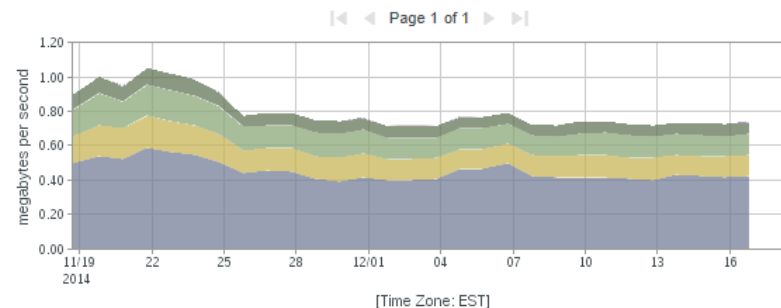
Group: All Groups [\[change\]](#)

Last 30 Days ◀ 11/18/2014 16:43 - 12/18/2014 16:43 ▶▶

Multi-item Trend - Interface :: Bits - Average Rate



Multi-Item Stacked Trend - Interface :: Bytes - Average Rate



Scaled Trend Charts - Interface :: Bits - Average Rate



Bits - Average Rate

[Time Zone: EST]

cis7606-96.36.36.ca.com : Gi3/38



◀◀ Page 1 of 32 ▶▶

**New Support for up to 30 days “High Resolution”**

Site Navigation

Group: All Groups Site: North America > North East [change]

Last Hour 12/18/2014 16:22 - 12/18/2014 17:22

Regions

Site: North America

<input type="checkbox"/> Name	Location	Owner ID	Time Zone	Business Hours ID	Path	Description
<input type="checkbox"/> North East	Northeast	admin	EST		/All Groups/North America/North East	Northeast IT Region which covers west of t...
<input type="checkbox"/> North West	Northwest	admin	PST8PDT		/All Groups/North America/North West	Northwest IT Region covering west of the...
<input type="checkbox"/> South East	Southeast	admin	EST		/All Groups/North America/South East	Southeast IT region covering East of the Mi...
<input type="checkbox"/> South West	Southwest	admin	PST8PDT		/All Groups/North America/South West	Southwest IT region covering West of the...

Search On Demand

Dynamic Peer Sites

Parent Site: North America

<input type="checkbox"/> Name	Location	Owner ID	Time Zone	Business Hours ID	Path	Description
<input type="checkbox"/> North East	Northeast	admin	EST		/All Groups/North America/North East	Northeast IT Region which covers west of t...
<input type="checkbox"/> North West	Northwest	admin	PST8PDT		/All Groups/North America/North West	Northwest IT Region covering west of the...
<input type="checkbox"/> South East	Southeast	admin	EST		/All Groups/North America/South East	Southeast IT region covering East of the Mi...
<input type="checkbox"/> South West	Southwest	admin	PST8PDT		/All Groups/North America/South West	Southwest IT region covering West of the...

Search Page 1 of 1 Displaying 1 - 4 of 4 Max Per Page 10

Dynamic Child Sites

Site: North East

<input type="checkbox"/> Name	Location	Owner ID	Time Zone	Business Hours ID	Path	Description
<input type="checkbox"/> Baltimore	Baltimore, MD	admin	EST		/All Groups/North America/North East/Baltimore	IT Infrastructure for Baltimore Colts.

Site Path (breadcrumbs) when site selected in dashboard

UI indication on dashboards to easily identify “pinned” views

Enhance Site list views with option to show related (sibling, child) sites



## Site Pages

Group: All Groups Site: North America &gt; South East [change]

Last Hour 12/16/2014 18:54 - 12/16/2014 19:54

Details



Network Health

Server Health

CBOoS

## CPU or Memory Utilization Trend Scorecard - CPU Utilization



Site: South East

Critical Status Start (80.0) Major Status Start (60.0) Minor Status Start (40.0) Normal Status Start Timeframe: Last Hour Metric Calculate Level: by Group

Group Name	Dec 16, 2014 2:00 PM	Dec 16, 2014 3:00 PM	Dec 16, 2014 4:00 PM	Dec 16, 2014 5:00 PM	Dec 16, 2014 6:00 PM	Dec 16, 2014 7:00 PM	Overall Average (%)
South East	16%	16%	16%	16%	16%	16%	16%
Atlanta	16%	16%	16%	16%	16%	16%	16%
Charlotte	16%	16%	16%	16%	16%	16%	16%
Jacksonville	16%	16%	16%	16%	15%	16%	15%
Miami	16%	16%	16%	16%	16%	16%	16%
New Orleans	16%	16%	16%	16%	16%	16%	16%
Tampa	16%	16%	16%	16%	16%	16%	16%
Tennessee	16%	16%	16%	17%	16%	16%	16%

Page 1 of 1 Displaying 1 - 8 of 8

## Interface Utilization Trend Scorecard - In and Out



Site: South East

Critical Status Start (80.0) Major Status Start (60.0) Minor Status Start (40.0) Normal Status Start Timeframe: Last Hour Metric Calculate Level: by Group

Group Name	Dec 16, 2014 2:00 PM	Dec 16, 2014 3:00 PM	Dec 16, 2014 4:00 PM	Dec 16, 2014 5:00 PM	Dec 16, 2014 6:00 PM	Dec 16, 2014 7:00 PM	Overall Average (%)
South East	49%	49%	49%	49%	49%	49%	49%
Atlanta	49%	49%	49%	49%	49%	49%	49%

## Network Device Health

Group: All Groups Site: North America &gt; South East [change]

Last Hour 12/16/2014 19:03 - 12/16/2014 20:03

## Top Interface Errors/Discards (Table)

Site: South East

Device Name	Name	Description	Discards In - Total (Disc Packets)	Discards Out - Total (Disc Packets)	Errors In - Total (Erroneous Packets)	Errors Out - Total (Erroneous Packets)
Cisco-3945_10.251.25.17	GigabitEthernet0/116	GigabitEthernet0/116	19.515 kDiscards	19.51 kDiscards	19.508 kErrors	19.519 kErrors
Cisco-3945_10.251.27.45	GigabitEthernet0/30	GigabitEthernet0/30	19.514 kDiscards	19.508 kDiscards	19.508 kErrors	19.5 kErrors
Cisco-3945_10.251.28.14	GigabitEthernet0/100	GigabitEthernet0/100	19.514 kDiscards	19.505 kDiscards	19.503 kErrors	19.498 kErrors
Cisco-3945_10.251.2.22	GigabitEthernet0/47	GigabitEthernet0/47	19.514 kDiscards	19.502 kDiscards	19.498 kErrors	19.514 kErrors
Cisco-3945_10.251.27.44	GigabitEthernet0/34	GigabitEthernet0/34	19.514 kDiscards	19.5 kDiscards	19.514 kErrors	19.505 kErrors

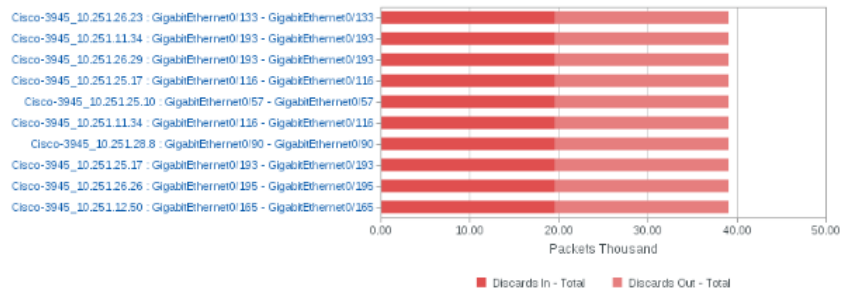
Search

Page 1 of 6 Displaying 1 - 5 of 30

Max Per Page 5

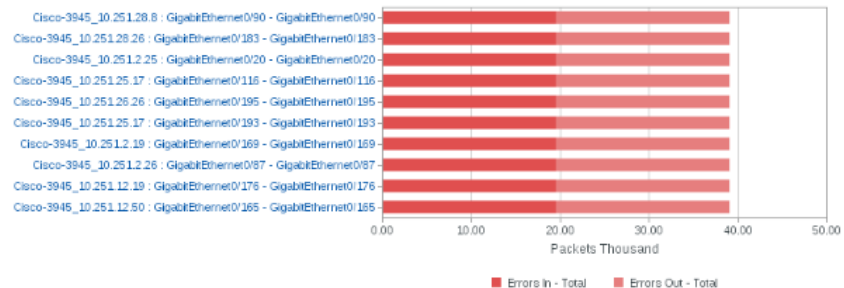
## Top Interface Discards (Bar Chart)

Site: South East



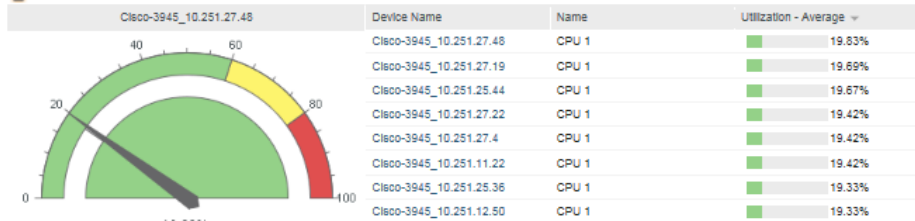
## Top Interface Errors (Bar Chart)

Site: South East



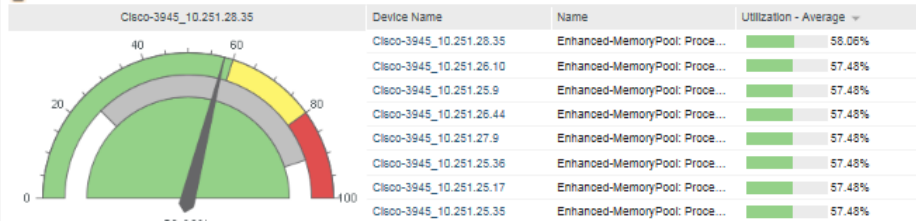
## Top CPU Utilization Routers/Switches - Gauge/Table

Site: South East



## Top Memory Utilization Routers/Switches - Gauge/Table

Site: South East







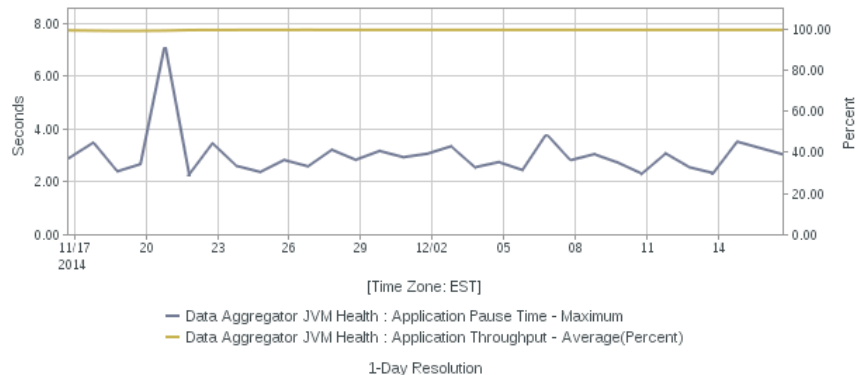
## Application Health - Self Monitoring

Group: All Groups [\[change\]](#)

Last 30 Days ▾ 11/16/2014 17:14 - 12/16/2014 17:14 ▾

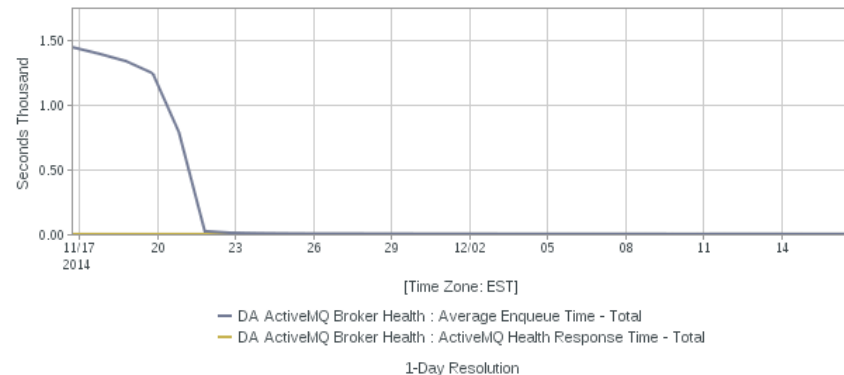
## Data Aggregator JVM Health

Server: DataAggregator:10.130.156.180



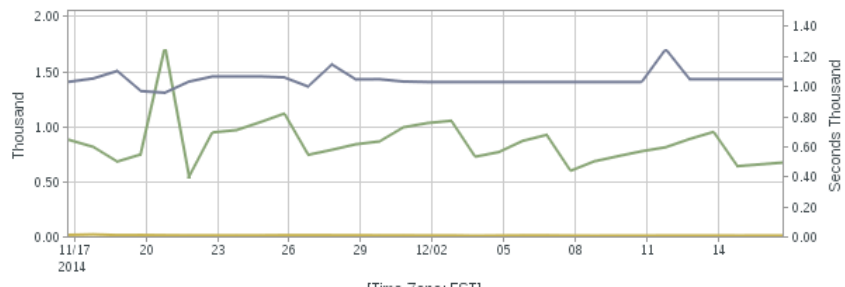
## Data Aggregator ActiveMQ Health

Server: DataAggregator:10.130.156.180



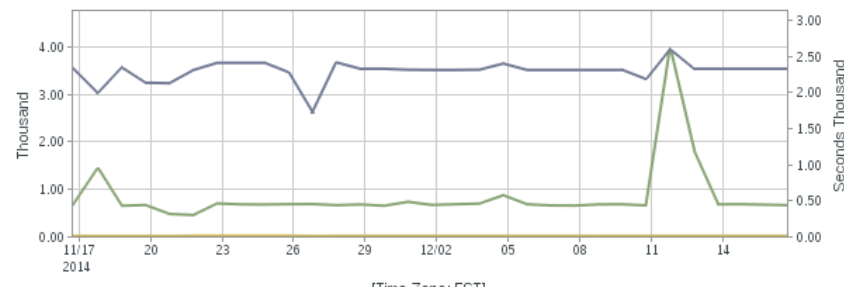
## Data Aggregator Baseline Processing Performance

Server: DataAggregator:10.130.156.180



## Data Aggregator Rollups Processing Performance

Server: DataAggregator:10.130.156.180



# Improved Dashboard Granularity Controls

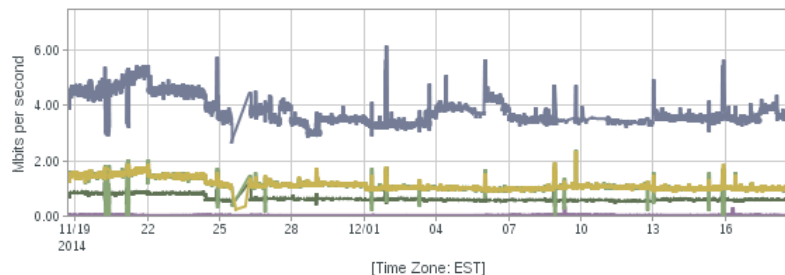
## Trend Views - Improved Look and Feel

Group: All Groups [\[change\]](#)

Last 30 Days ▾ 11/18/2014 16:43 - 12/18/2014 16:43 ▾ ▸ ▹

Multi-Item Trend - Interface :: Bits - Average Rate

Page 1 of 1



cis720496-5.ca.com : Gi2/0  
 cis7505-96.11.ca.com : Fa3/0/0  
 cis720496-6.ca.com : Fa1/0  
 cis720496-5.ca.com : Fa1/0  
 cis7606-96.36.36.ca.com : Gi3/14

8390 Samples (5-Minute Resolution)

Approved Users can (up to 30 days)  
 Now change default to show 'as-poll'd'

### Edit Role Rights

Available Rights  
Delete Data Sources  
SNMP Clear Text

Search

Selected Rights  
Run Dashboards At Higher Resolution

Run Dashboards At Higher Resolution

High

OK

Cancel

New Role – Right for Higher Resolution Viewing

### Context Settings

Context Type:

Interface

Changing the Context Type removes all current items.

### Multi-Item Trend - Settings

Title: \*

Multi-Item Trend

View Type:

MultiTrend (Draws all items on one chart - Top N items at a time)

Metric Family:

Interface

Metric Value:

Bits - Average Rate

Resolution:

5 Minute

Sort Direction:

Default (1 Day)

Chart Type:

5 Minute

Standardized Axis:

15 Minute

Metric Filtering:

1 Hour

Allows users to set

# Improved Threshold Workflows

# Administrators can more easily setup thresholds on only the metrics they care about most

- New role controls can enable Administrators to empower Engineers to setup their own thresholds w/out being a DA Administrator
- Event Profiles make it simple to set policy based thresholds on only the metrics that matter most
  - Folders and Table View make it easy to manage hundreds of rules
  - Event Rule Editor with copy makes it easier to configure complex rules
  - Group Association now lets users apply threshold policy to subcomponents
- Improved Event Notification system helps send events to the right people for the right situation



## Edit Role

Edit Role

Name: \*

Description:

Role Status:

Menu Set

Performance

Edit

Save Cancel

**Edit Role Rights**

Available Rights

- Administer DA Threshold Profiles
- Create DA Threshold Profiles

Selected Rights

- Administer Shared Dashboards
- Create a Dashboard
- Event Notifications
- Demand Report Templates
- Drill into Data Sources

Threshold

Search

OK Cancel

**New Role Rights allow Non-DA Admins the ability to  
*Create and Administer* event profiles**



Dashboards

Inventory

Reports

My Settings

Search All



## Manage Threshold Profiles

System Settings

Display Settings

Notifications

Display Settings

[Threshold Profiles](#)

Folder View

Table View

New Folder Edit Folder Delete Folder

- ✚ Alex's Profiles
- ✚ Ethernet Backhaul - RTT (Class 1) (1)
  - ICMP Response Time Latency
- ✚ Ethernet Backhaul - RTT (Class 2)
- ✚ Ethernet Backhaul - Utilization
- ✚ Interfaces (2)
  - Errors In >= 3%
  - Total Utilization Greater Than 90
- ✚ On Field Coach Uplinks

Event Rules

Groups

Events

## Event Rules

Rule Name ▲

Latency &gt; 50

Latency &gt; 60

Access to configure Threshold Profiles  
does not require DA admin privileges

Search

Page 1 of 1



Displaying 1 - 2 of 2

Max Per Page 50

Event Conditions

Folders helps users keep Threshold Policies  
organized for simple administration

Search

Page 1 of 1



Displaying 1 - 2 of 2

Max Per Page 50

New Profile

Copy Profile

Edit Profile

Delete Profile



## Manage Threshold Profiles

Folder View

Table View

Name ▲	Owner	Last Modified	Status
Backhaul to Stadium - L	Patriots_a...	Dan Holmes	Enabled
Contract Pre-Policy Pac	Adam		
Errors In >= 3%	Tim1	Tim1	Enabled
ICMP Response Time L	Tim2	admin	Enabled
Interface Utilization Critic	Dan Holmes	admin	Disabled
Total Utilization Greater	Tim1	Tim1	Enabled

Dangerously high utilization on backhaul to stadium wifi circuits

Event Rules

Groups

Events

## Event Rules

	Metric Family	Duration	Window	Severity
Backhaul to Stadium - Utilization Critical	Interface	60 sec	600 sec	Critical

Search

Page 1 of 1



Displaying 1 - 1 of 1

Max Per Page 50

## Event Conditions

Search



Page 1 of 1



Displaying 1 - 2 of 2

New Profile

Copy Profile

Edit Profile

Delete Profile

Search

Page 1 of 1



Displaying 1 - 2 of 2

Max Per Page 50

Table View makes it simple to search for policies





## Create / Edit Threshold Profile

Name: \* ICMP Response Time Latency Owner: \* Tim2 Creation Time: Nov 4, 2014 10:00:35 PM GMT  
Description: Nov 21, 2014 1:56:26 PM GMT

Folder: \* Ethernet Backhaul - RTT (0)

Status: \* Enabled

## Event Rules

Rule Name ^	Metric Family
Latency > 50	Response P
Latency > 60	Response P

Search

Page

New

Copy

Edit

## Create / Edit Event Rule

Name: \* Latency > 50 Duration (sec): \* 60  
Description: Window (sec): \* 60  
Metric Family: \* Response Path Test ICMP Severity: \* Major

A violation occurs when all of these conditions are met:

Metric: \* Latency (ms) Operator: \* Above Value: \* 50.0 Condition Type: \* Fixed Value  
+ Add Condition

A violation is cleared when:

Metric: \* Latency (ms) Operator: \* Below Value: \* 50.0 Condition Type: \* Fixed Value

Save

Cancel

Displaying 1 - 2 of 2 Max Per Page

50

# Threshold Profiles may contain multiple Event Rules (Metric Evaluations)

## Time Over Deviation From Normal is Supported

Save

Cancel

# Manage Threshold Profiles

Folder View

Table View

New Folder Edit Folder Delete Folder

- [-] Alex's Profiles
  - [-] Ethernet Backhaul - RTT (Class 1) (1)
    - ICMP Response Time Latency
  - [-] Ethernet Backhaul - RTT (Class 2)
  - [-] Ethernet Backhaul - Utilization
  - [-] Interfaces (2)
    - Errors In >= 3%
    - Total Utilization Greater Than 90
  - [-] On Field Coach Uplinks

## Assign Groups to Threshold Profiles

### Available Groups

- [-] All Groups
  - [-] National Football League
    - [-] North America
      - [-] North East
        - [-] Baltimore
        - [-] Boston
        - [-] Buffalo
        - [-] Chicago
        - [-] Cincinnati
        - [-] Cleveland
        - [-] Detroit
        - [-] East Rutherford
        - [-] Green Bay
        - [-] Indianapolis
        - [-] Kansas City

Search

### Selected

- [-] Threshold Response Time Tests

OK

Cancel

**Threshold Profiles are assigned to Groups you've defined in CA PM**  
*Devices or ANY Subcomponents (QoS, Interface, Response Test)*

## Events Display

Group: All Groups Site: North

Last 24 Hours 12/15/2014

### Events

Date

12/16/2014 15:16 EST  
12/16/2014 14:02 EST  
12/16/2014 14:01 EST  
12/16/2014 13:13 EST  
12/16/2014 13:12 EST  
12/16/2014 12:53 EST  
12/16/2014 12:52 EST  
12/16/2014 12:43 EST  
12/16/2014 12:43 EST  
12/16/2014 12:03 EST

Search

Details

### Filtered Events

Site: Green Bay

Search

Details

Title: \* Filtered Events  
Sub Title: Site: Green Bay

#### Context Settings

Context Type: Summary

Current Item: All Groups /

- All Groups
  - National Football League
  - North America
  - Staging
  - Threshold Interfaces
  - Threshold QoS Components

#### Event Filter

Data Source

Event Type

Threshold Profile

##### Severity

☒ Select/Deselect All

☒ Critical

☒ Major

☒ Minor

☒ Normal

☒ Unknown

##### Event Type

☐ Select/Deselect All

☐ Administration Event

☐ Data Repository State

☐ Override

☐ Reconfiguration

☒ Threshold Violation

##### Event Subtype

###### Threshold Violation

☒ Select/Deselect All

☒ Cleared

☒ Raised

Apply Changes: My Current Session

Save

Cancel

Use Defaults

New Filtered Events View can filter events displayed by Event Type or Threshold Profile

Print Email More

Max Per Page 10

Max Per Page 10



## Manage Notifications

Notifications

☐ Name ▲

☐ Backhaul Customer Notification

☒ Backhaul Services Team

Edit Notification

1 Name & Status

2 Groups

3 Conditions

4 Actions

Data SourceEvent TypeThreshold Profile

Available

Alex's Profiles

On Field Coach Uplinks

Interfaces

Errors In >= 3%

Total Utilization Greater Than 90

Ethernet Backhaul - RTT (Class 1)

ICMP Response Time Latency

Ethernet Backhaul - Utilization

Selected

ICMP Response Time Latency

Status

Enabled

Enabled

Search

New

Edit

X Per Page

100



Notification Policies can now filter by our new Threshold Profile

# Improved Poll Filtering

# Administrators can more easily filter polling activity to the devices and subcomponents they most care about

- Filtering applies to ALL subcomponent types (beyond interface)
- Rules extend beyond 3 'and' rules and includes nested rules as well as 'or' conditions
- Every component will support Name and Description (some may contain more) that can be filtered with Regular Expression
- XML Tagging lets Administrators comfortable with self-service add additional attributes to filter on



# Monitoring Profiles

Monitored Inventory

Monitoring Configuration

Monitoring Profiles

Threshold Profiles

Metric Families

Vendor Certifications

Collections

System Status

## Monitoring Profiles

Name SNMP Poll Rate

Network Interface

Network Interface - Cisco 3945 Routers 5 minutes

Network Interface - Component Filtering 1 minute

Network Interface - Portsmouth Lab Devices 5 minutes

Network Interface - Threshold Monitoring 1 minute

Network Interface - Util 1 minute

Physical Server 5 minutes

QoS 5 minutes

QoS - Threshold Monitoring 5 minutes

Reachability 5 minutes

Response Path 5 minutes

Response Path - Threshold Monitoring 1 minute

Router 5 minutes

5 minutes

Search Page 1 of 1 Displaying 1 -

New

Copy

Edit

Delete

You can setup filters for all Monitoring Profiles (Interface, QoS, Response)

Response Path Test Ethernet

Response Path Test Ethernet Jitter \*

Response Path Test Ethernet Ping \*

Response Path Test HTTP \*

Response Path Test ICMP Name contains "10", or Name contains "11", or Name contains "12", or Description contains "ICMP"

Response Path Test ICMP Jitter \*

Response Path Test Jitter \*

Response Path Test Path Echo \*

Response Path Test TCP \*

Response Path Test UDP \*

Defines the identification information, configuration information, and polled metrics for response paths.

Search Page 1 of 1 Displaying 1 - 12 of 12 Max Per Page 50

Edit Filter

Clear Filter

Monitoring Profiles

Monitored Inventory

Monitoring Configuration

- Monitoring Profiles
- Threshold Profiles
- Metric Families
- Vendor Certifications
- Collections

System Status

Add / Edit Filter Expression

A component is monitored for the Metric Family wh

Attribute	Operation	Value
Description	Contains	ICMP

OR

- Name Contains "10"
- Name Contains "11"
- Name Contains "12"

AND

- Description Contains "ICMP"

- New AND
- New OR
- New NOT
- AND/NOT/OR
- Update
- Delete
- Clear

Expression XML

(Name Contains "10") OR (Name Contains "11") OR (Name Contains "12") OR ((Description Contains "ICMP"))

Save Cancel

Nested Rules, 'And' Rules, 'Or' Rules

...s "10", or Name contains "11", or Name  
or Description contains "ICMP"

Displaying 1 - 12 of 12 Max Per Page 50





## Monitored Devices

Monitored Inventory

Tree View

Search

Monitored Devices

Discovery Profiles

Monitoring Configuration

System Status

Device By Collection

+ All Data Aggregators

+ All Devices

+ All ESX Hosts

+ All Imported Devices

+ All Manageable Devices

+ All Routers

+ All Servers

+ All Switches

+ All Virtual Machines

+ All VMware vCenters

+ Cisco 3945 Routers

+ Component Filtering (1)

● cis7606-96.37.ca.com.37.ca.com ( 138.42.94.194 )

+ Event Rule Validation Collection

+ Frame Relay Devices

+ Stadium Site Router - WiFi

+ Staging Lab Devices

+ Threshold Monitoring

Details

Polled Metric Families

Monitoring Profiles

Threshold Profiles

Metrics

Filter Report

E

## Component Filter Criteria

Monitoring Profile	Metric Family	Filter
Network Interface - Component Filtering	Interface	Administrative Status does not equal down(2), and Name contains "G", and (Name contains "F" or !Speed In less than or equal to 10Mbps)
Response Path - Threshold Monitoring	Response Path Test ICMP	Name contains "10", or Name contains "11", or Name contains "12", or Description contains "ICMP"

Search

Page 1 of 1

Displaying 1 - 2 of 2

Max Per Page

10

## Matching Components

Name	Description	Last Discovered
Cisco Rttmon ICMP: 0.0.0.0-138.42.241.240 : 11001	Cisco Rttmon ICMP	Dec 1, 2014 9:10:57 PM EST
Cisco Rttmon ICMP: 0.0.0.0-138.42.96.10 : 497	Cisco Rttmon ICMP	Nov 26, 2014 9:10:54 PM EST
Cisco Rttmon ICMP: 138.42.96.37-138.42.96.201 : 1250	Cisco Rttmon ICMP	Dec 4, 2014 9:11:11 PM EST

Filter Report let you see the results of your filters on a per Device basis



## Monitored Devices

Monitored Inventory

Monitored Devices

Discovery Profiles

Monitoring Configuration

System Status

Tree View

Search

Device By Collection

All Data Aggregators

All Devices

All ESX Hosts

All Imported Devices

All Manageable Devices

All Routers

All Servers

All Switches

All Virtual Machines

All VMware vCenters

Cisco 3945 Routers

Component Filtering (1)

cis7606-96.37.ca.com.37.ca.com ( 138.42.94.194 )

Event Rule Validation Collection

Frame Relay Devices

Stadium Site Router - WiFi

Staging Lab Devices

Threshold Monitoring

Details

Polled Metric Families

Monitoring Profiles

Threshold Profiles

Metrics

Filter Report

E

Metric Family	Vendor Cert	Status	Last Discovered
Response Path Test ICMP	Cisco IPSLA Statistics	Supported	Dec 16, 2014 4:36:04 PM EST
Response Path Test ICMP Jitter		Not Supported	Nov 4, 2014 4:35:10 PM EST
Response Path Test Jitter	Cisco IPSLA Jitter Precision Statistics	Supported	Dec 2, 2014 9:10:59 PM EST
Response Path Test Path Echo	Cisco IPSLA Statistics	Supported	Dec 4, 2014 9:11:11 PM EST
Response Path Test TCP	Cisco IPSLA Statistics	Supported	Nov 4, 2014 4:35:41 PM EST
Response Path Test UDP	Cisco IPSLA Statistics	Supported	Nov 21, 2014 9:10:39 PM EST

Search

Page 1 of 1

Displaying 1 - 24 of 24

Max Per Page 50

Update Metric Family

Update Metric Families

Response Path Test ICMP Components

Name	Description	Status	Last Discovered
Cisco Rttmon ICMP: 0.0.0.0-138.42.241.240 : 11001	Cisco Rttmon ICMP	Retired	Dec 1, 2014 9:10:57 PM EST
Cisco Rttmon ICMP: 0.0.0.0-138.42.96.10 : 497	Cisco Rttmon ICMP	Active	Nov 26, 2014 9:10:54 PM EST
Cisco Rttmon ICMP: 0.0.0.0-138.42.96.40 : 6664	Cisco Rttmon ICMP	Retired	Nov 8, 2014 11:19:36 PM EST

Displaying 1 - 21 of 21

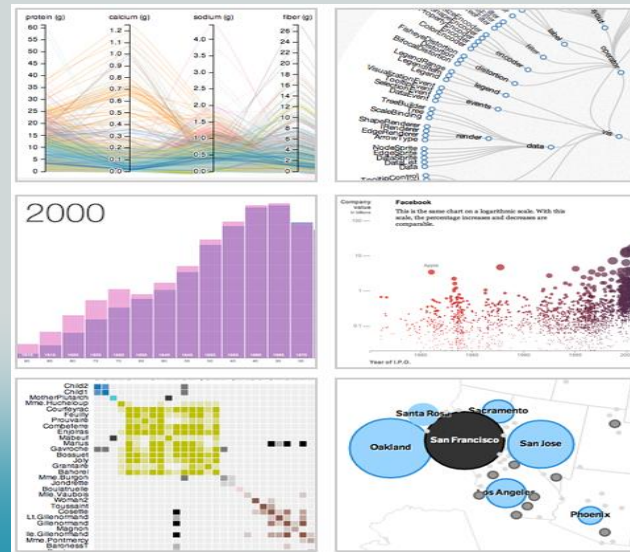
Max Per Page 50

Administrators can also view results of Filters  
In the Polled Metric Families View

# Introducing OpenAPI (Beta with CA PM 2.4)

# New OpenAPI strategy focused on simplicity and ease of use – CA's Uniqueness

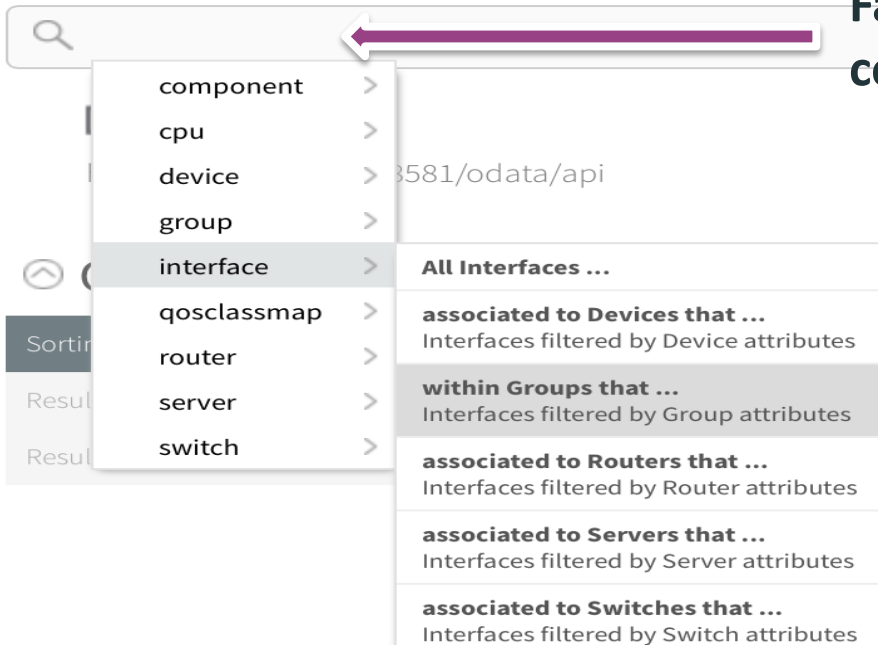
- Presents our API and the items defined within a logical schema rather than as a disparate set of query-able items
- Our approach is to "ask the right question"
- Extensible and Open
  - Controllable and predictable output format (XML, JSON, CSV, ATOM)
  - Large open-source movement around OData



*"In fact, for me it was probably THE BEST thing I saw all week at CA World! The possibilities this new capability represents are impressive and exciting"... Customer Blog Comment*

Source: <https://communities.ca.com/community/ca-infrastructure-management/blog/2014/11/03/first-light-part-1-questions-and-answers?sr=inbox&ru=1788170>

## Specify the Query



Faceted dynamic search field provides contextual recommendations

Easy access to common relationship based questions

# Making it Simple– Questions to Queries

QueryBuilder is an easy way to turn your question into a valid OData compliant and functional URL

The screenshot shows the CA Performance Management Query Builder interface. At the top, the CA logo and 'Performance Management Query Builder' are displayed. A purple callout bubble points to the 'Columns' section, stating 'Select the components you want'. The 'Specify the Query' section contains several filter and selection buttons: 'device', 'ColumnFilter' (startswith(groups/Name,'Massachusetts') eq true), 'Columns' (ID, Name, HostName, PrimaryIPAddress), 'MetricFamily' (availabilitymfs), 'Metrics' (im\_Availability), 'MetricFilter' (availabilitymfs/im\_Availability le 100), and 'TimeRange' (Last 4 Hours). Below this, a 'Query URL' section shows the generated OData URL. Three blue callout bubbles at the bottom highlight key features: 'Automatically builds the Query URL for you', 'Easily display /export data into 3rd Party Portals such as SAMS', and 'Run and Display Query data in CA Performance Center'.

ca technologies Performance Management Query Builder

Select the components you want

Specify the Query

device ColumnFilter startswith(groups/Name,'Massachusetts') eq true Columns ID, Name, HostName, PrimaryIPAddress MetricFamily availabilitymfs

Metrics im\_Availability MetricFilter availabilitymfs/im\_Availability le 100 TimeRange Last 4 Hours

Query URL

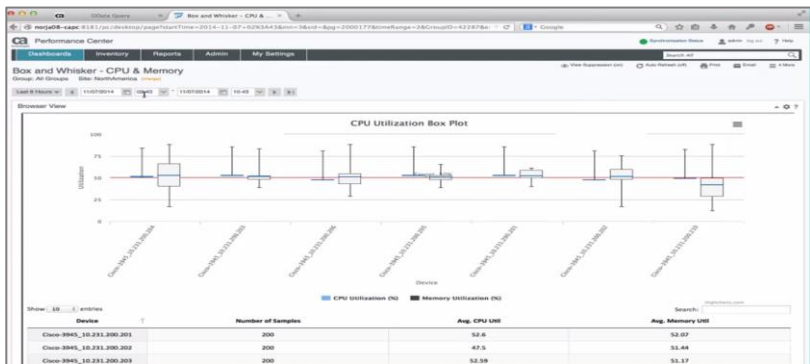
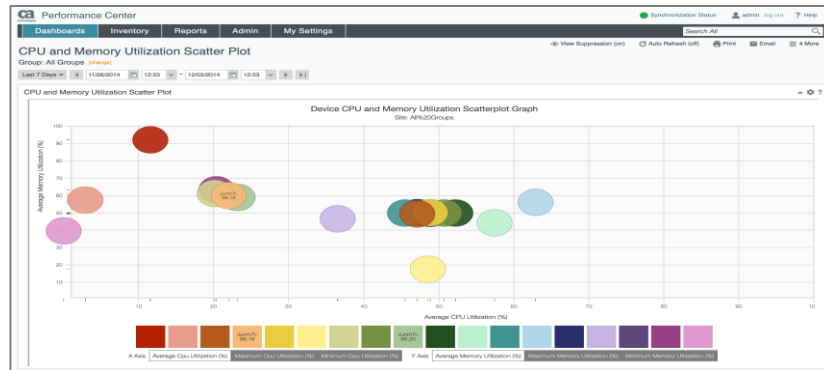
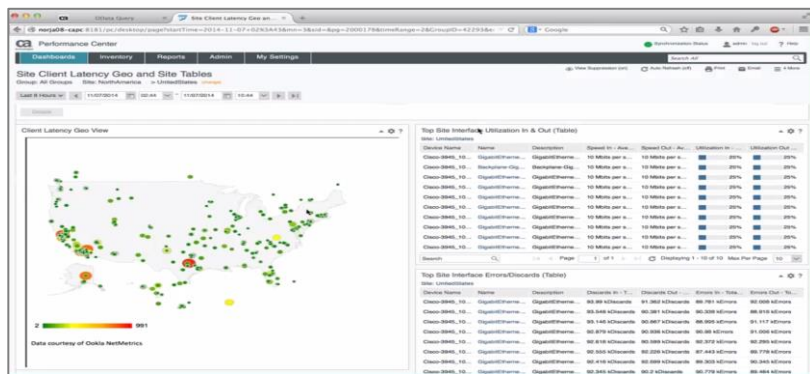
http://polperfa02:8581/odata/api/device?\$expand=availabilitymfs&starttime=1416316230&endtime=1416330630&\$filter=(startswith(groups/Name,'Massachusetts') eq true) and (availabilitymfs/im\_Availability le 100)&\$select=ID, Name, HostName, PrimaryIPAddress, availabilitymfs/im\_Availability

Automatically builds the Query URL for you

Easily display /export data into 3rd Party Portals such as SAMS

Run and Display Query data in CA Performance Center

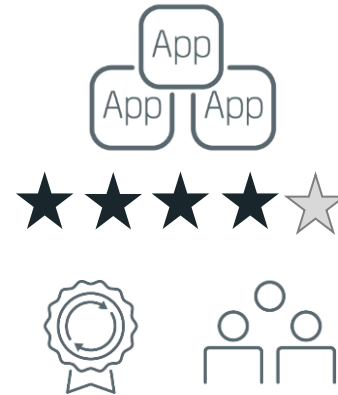
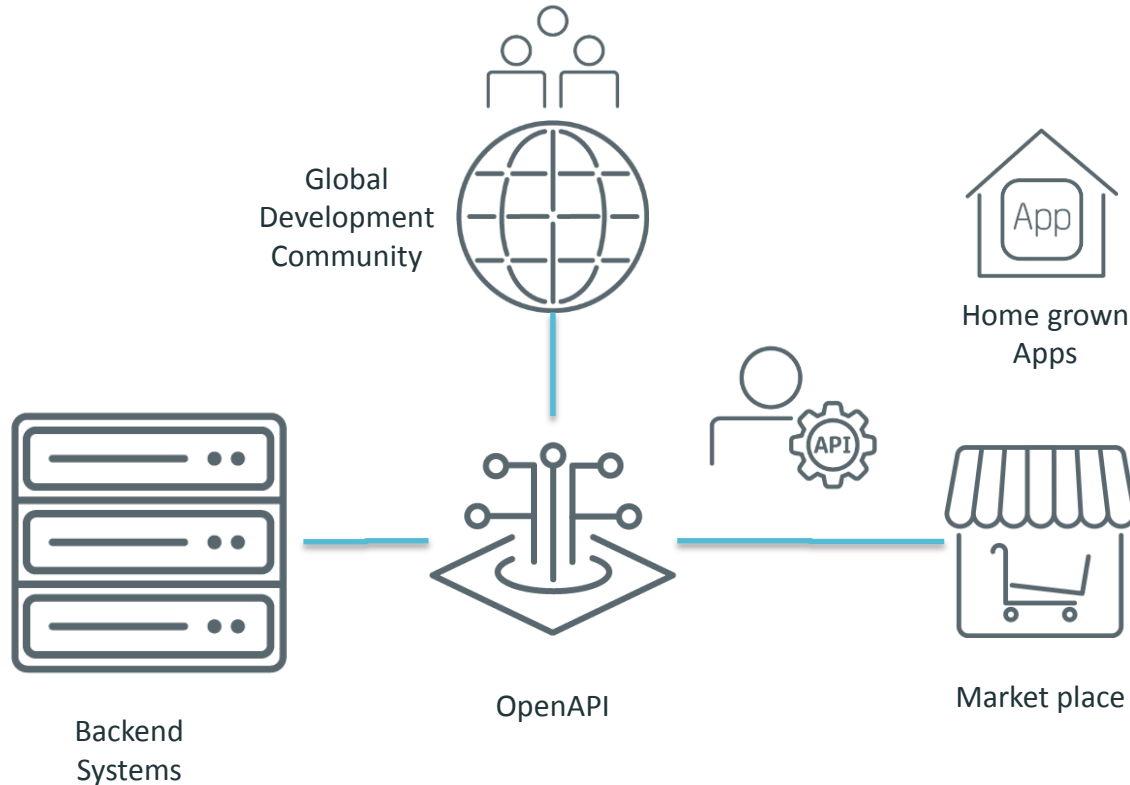
# Open API – Provides Customers a new way to create Innovative Dashboard Experiences



## Sample Dashboard Reports in CA PM

1. Site Client latency Geo and Site Tables
2. CPU and Memory Utilisation Scatter Plot
3. Box and Whisker CPU and Memory

# The New Development Model





Thank you – and contact your CA  
Technologies Account Team for more  
information about CA  
Performance Management 2.4