

2A The CA Plex .NET Client Generator

Rob Layzell
CA Technologies



Legal

This presentation was based on current information and resource allocations as of **April 18, 2011** and is subject to change or withdrawal by CA at any time without notice.

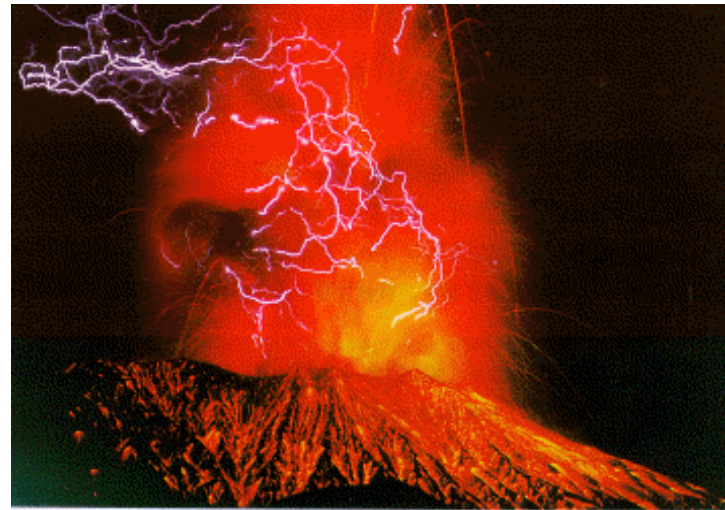
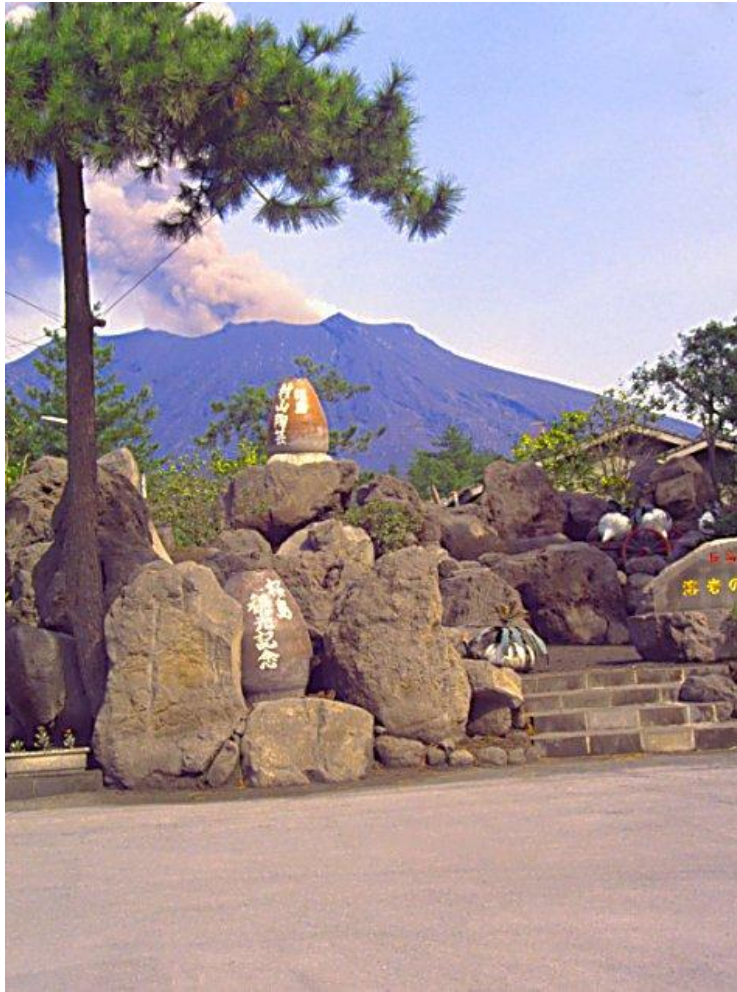
Notwithstanding anything in this presentation to the contrary, this presentation shall not serve to (i) affect the rights and/or obligations of CA or its licensees under any existing or future written license agreement or services agreement relating to any CA software product; or (ii) amend any product documentation or specifications for any CA software product. The development, release and timing of any features or functionality described in this presentation remain at CA's sole discretion. Notwithstanding anything in this presentation to the contrary, upon the general availability of any future CA product release referenced in this presentation, CA will make such release available (i) for sale to new licensees of such product; and (ii) to existing licensees of such product on a when and if-available basis as part of CA maintenance and support, and in the form of a regularly scheduled major product release. Such releases may be made available to current licensees of such product who are current subscribers to CA maintenance and support on a when and if-available basis. In the event of a conflict between the terms of this paragraph and any other information contained in this presentation, the terms of this paragraph shall govern.

CERTAIN INFORMATION IN THIS PRESENTATION MAY OUTLINE CA'S GENERAL PRODUCT DIRECTION. ALL INFORMATION IN THIS PRESENTATION IS FOR YOUR INFORMATIONAL PURPOSES ONLY AND MAY NOT BE INCORPORATED INTO ANY CONTRACT. CA ASSUMES NO RESPONSIBILITY FOR THE ACCURACY OR COMPLETENESS OF THE INFORMATION. TO THE EXTENT PERMITTED BY APPLICABLE LAW, CA PROVIDES THIS DOCUMENT "AS IS" WITHOUT WARRANTY OF ANY KIND, INCLUDING, WITHOUT LIMITATION, ANY IMPLIED WARRANTIES OF MERCHANTABILITY, FITNESS FOR A PARTICULAR PURPOSE, OR NON-INFRINGEMENT. IN NO EVENT WILL CA BE LIABLE FOR ANY LOSS OR DAMAGE, DIRECT OR INDIRECT, FROM THE USE OF THIS DOCUMENT, INCLUDING, WITHOUT LIMITATION, LOST PROFITS, LOST INVESTMENT, BUSINESS INTERRUPTION, GOODWILL OR LOST DATA, EVEN IF CA IS EXPRESSLY ADVISED OF THE POSSIBILITY OF SUCH DAMAGES.

Agenda

- Part 1 – The Technologies
 - Why Do *YOU* Need a New Client?
 - Windows Presentation Foundation Explained
 - XAML, Code-behind, XBAP, ClickOnce
- Part 2 – CA Plex r7.0
 - WinC/Java/RPG client migration
 - Rich client development
 - Web enablement ideas
 - What's Currently Missing?

Introducing CA Plex r7.0 a.k.a. Sakurajima



CA Plex r7.0 Goals

- Provide best of breed next generation Windows client
 - The **only** enterprise level .NET 4.0 code generation solution available*
 - Simplify the integration of generated code with non-Plex developers and designers
- To extend the range of deployment and Integration options
 - WCF Proxy for Windows Service, IIS and Azure hosting
 - Web Service Import
- To simplify the migration of existing Plex applications to make use of this new technologies.
 - Support for Patterns and Class Libraries
 - New tools to help organize applications to target new platforms.

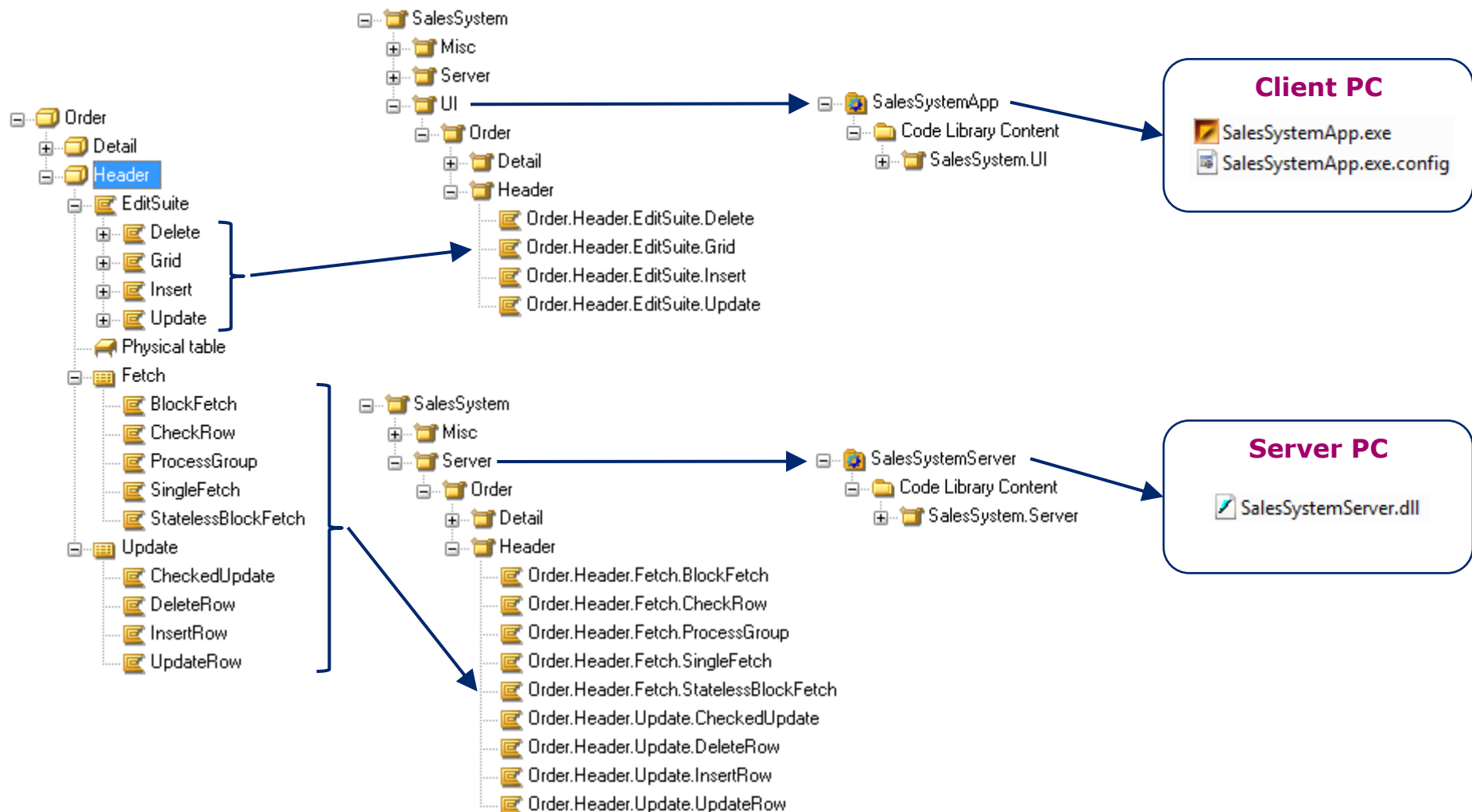
*That I know of anyway!

CA Plex r7.0 Features



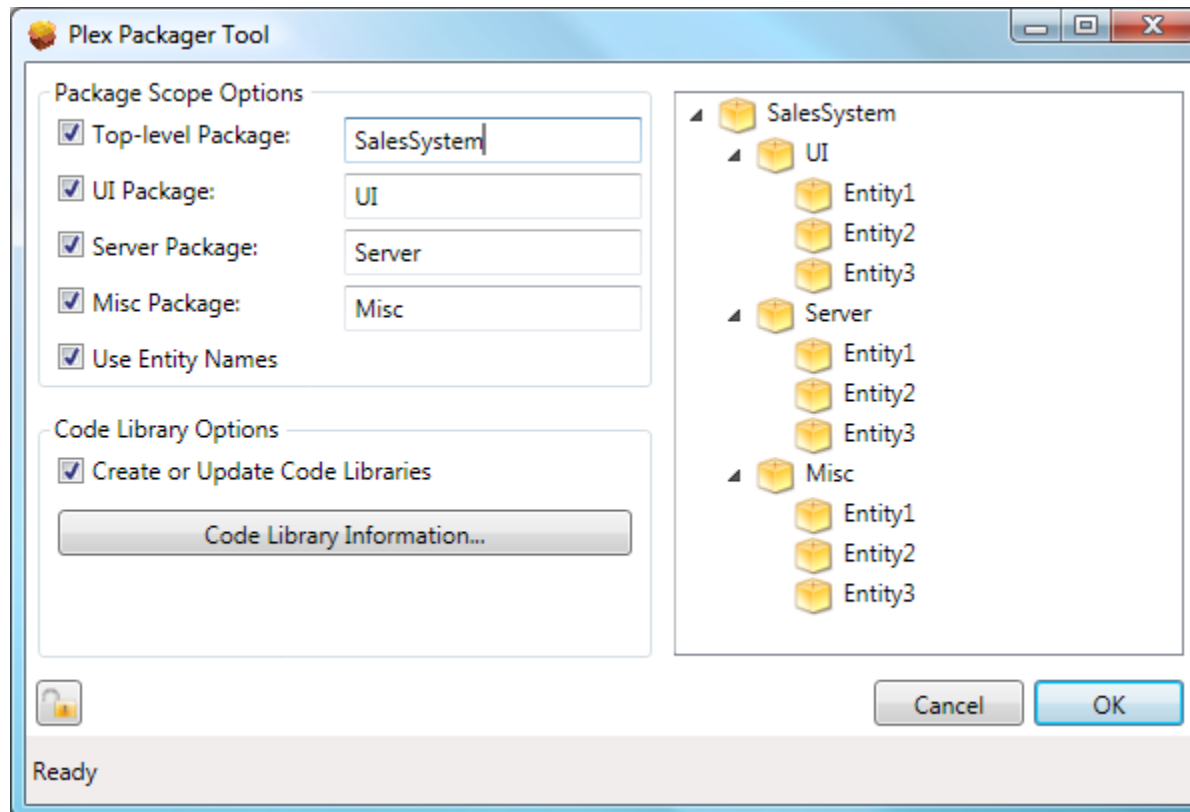
CA Plex

Client/Server Partitioning



CA Plex

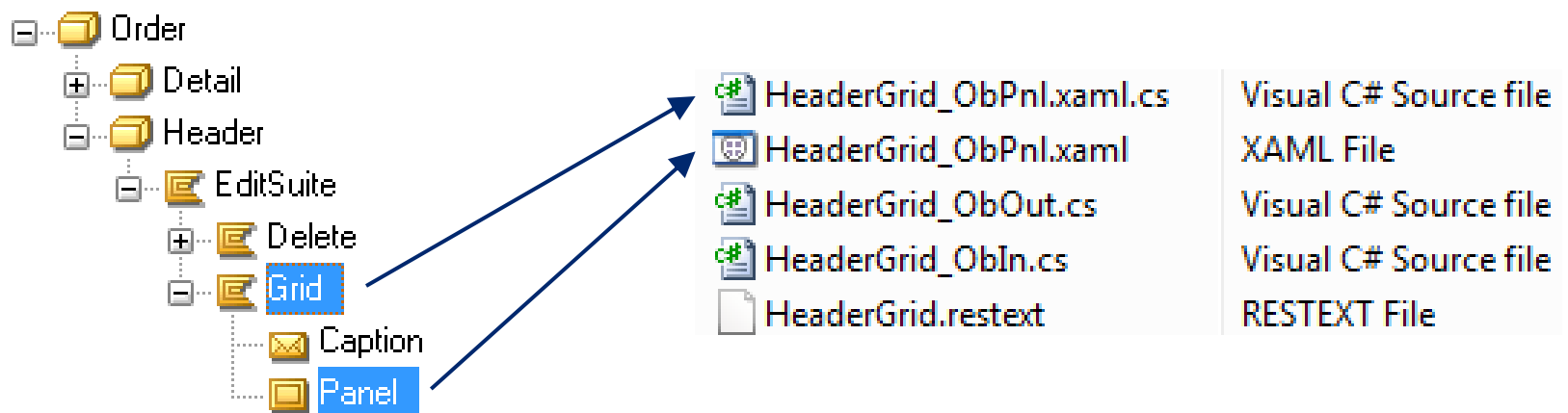
Demo #1 – CA Plex r7.0 Packager Tool



CA Plex

Generating WPF functions

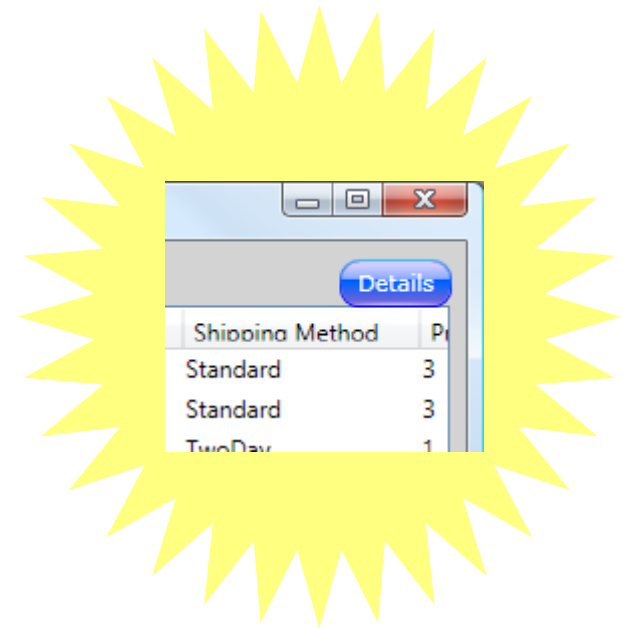
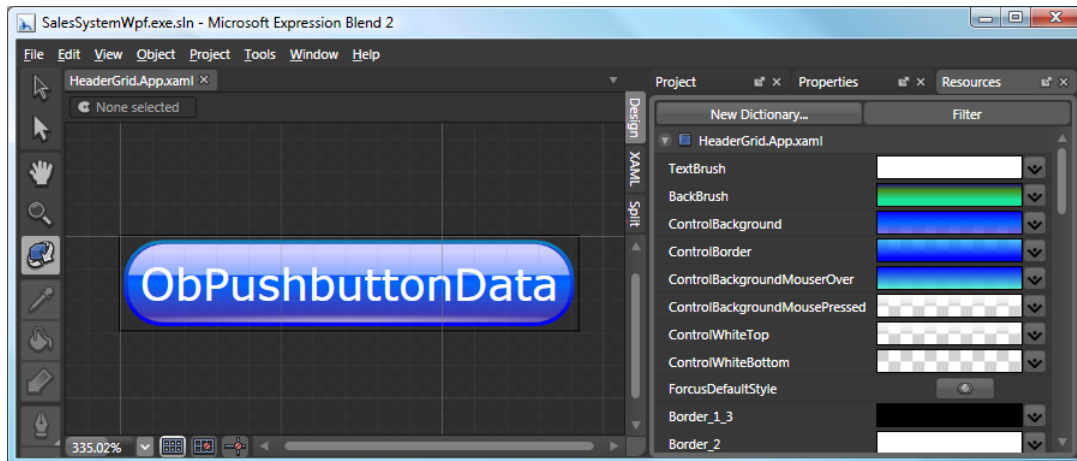
- Use existing FNC language SYS/C#
- Functions that scope a Panel generate:
 - XAML (Panel definition)
 - Code-behind C# source (Function AD)
 - Input / Output parameter interface C# source
 - Resource file



CA Plex

Application Customization

- Each application contains a generic App.xaml file
- Contains default rendering for WPF Controls
- Edit via:
 - Visual Studio 2008
 - MS Expression Blend 2



CA Plex

Building WPF functions

- Build as you would any other C# function:
 - Default Code Library (Quick and dirty)
 - Model Code Library objects (Best practice)
- Build designed for XCOPY deployment
- Create Executable to run WPF application

Executable 'bootstraps' .NET Runtime

Standard .NET config file (like WinC INI)

Plex .NET Runtime dependencies copied

All function classes compiled into Default Code Library

Name	Date modified	Type	Size
Images	9/16/2009 3:31 PM	File Folder	
ja-JP	9/16/2009 2:55 PM	File Folder	
HeaderGrid.exe	9/17/2009 12:36 PM	Application	18 KB
HeaderGrid.exe.config	9/16/2009 3:01 PM	CONFIG File	7 KB
Interop.PlexAPILib.dll	9/15/2009 12:42 PM	DLL File	24 KB
ObWPF.dll	9/15/2009 1:21 PM	DLL File	104 KB
Plex.Common.dll	9/15/2009 1:21 PM	DLL File	87 KB
Plex.Controls.dll	9/15/2009 1:20 PM	DLL File	76 KB
Plex.ObRun.dll	9/15/2009 1:21 PM	DLL File	284 KB
RibbonControlsLibrary.dll	10/17/2008 2:19 PM	DLL File	341 KB
SalesSystem.dll	9/17/2009 12:36 PM	DLL File	442 KB
WPFToolkit.dll	3/20/2009 1:49 PM	DLL File	447 KB

Plex-generated C# Application

Code Library Assemblies, Executables, Configuration Files

Plex Base .NET Runtime
(Plex.Obrun.dll)

Plex WPF Runtime
(Plex.ObWpf.dll)

Other UI
Runtimes?
Silverlight?

Plex
Common
Runtime

Plex
Controls
Runtime

Plex API
Runtime

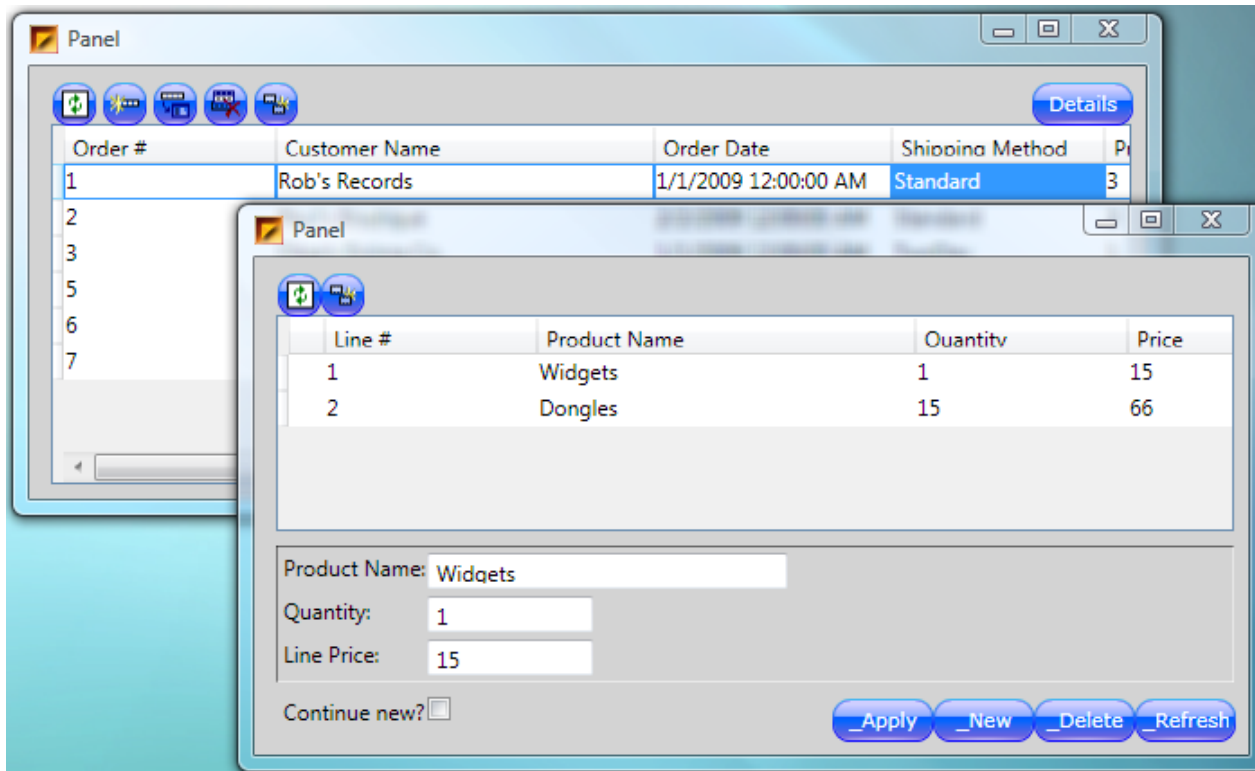
Ribbon
Control
Library

WPF
Toolkit
Library

CA Plex

Demo #2 - A Plex-generated XAML Application

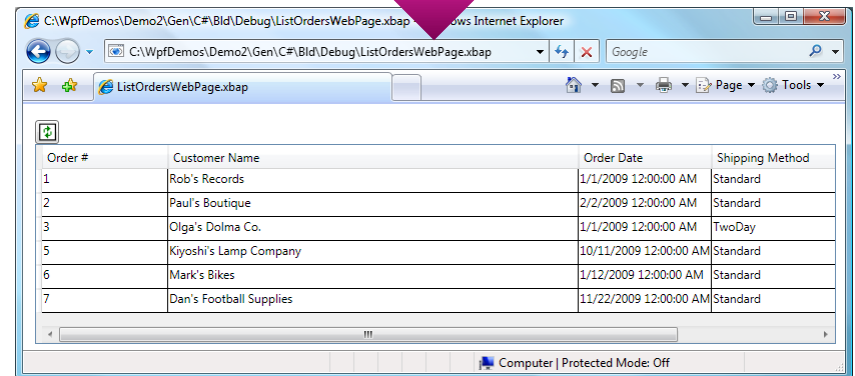
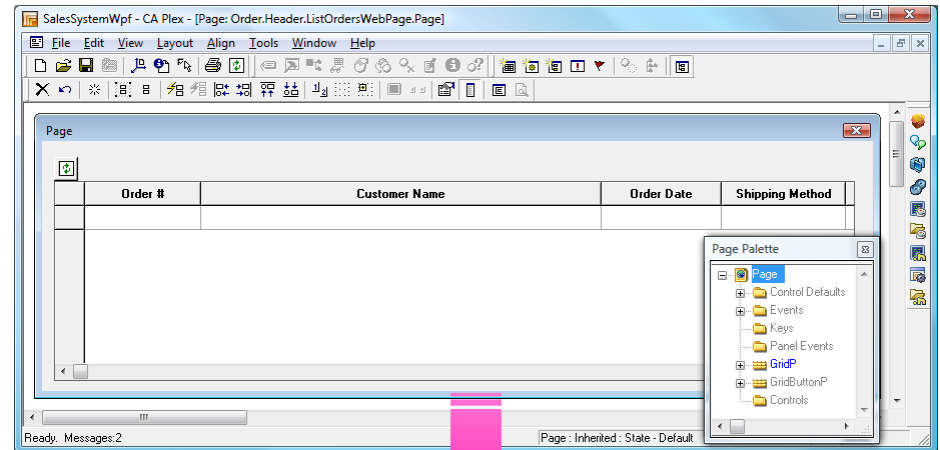
- XAML/Code-behind generation
- Application 'Look and feel' customization



CA Plex

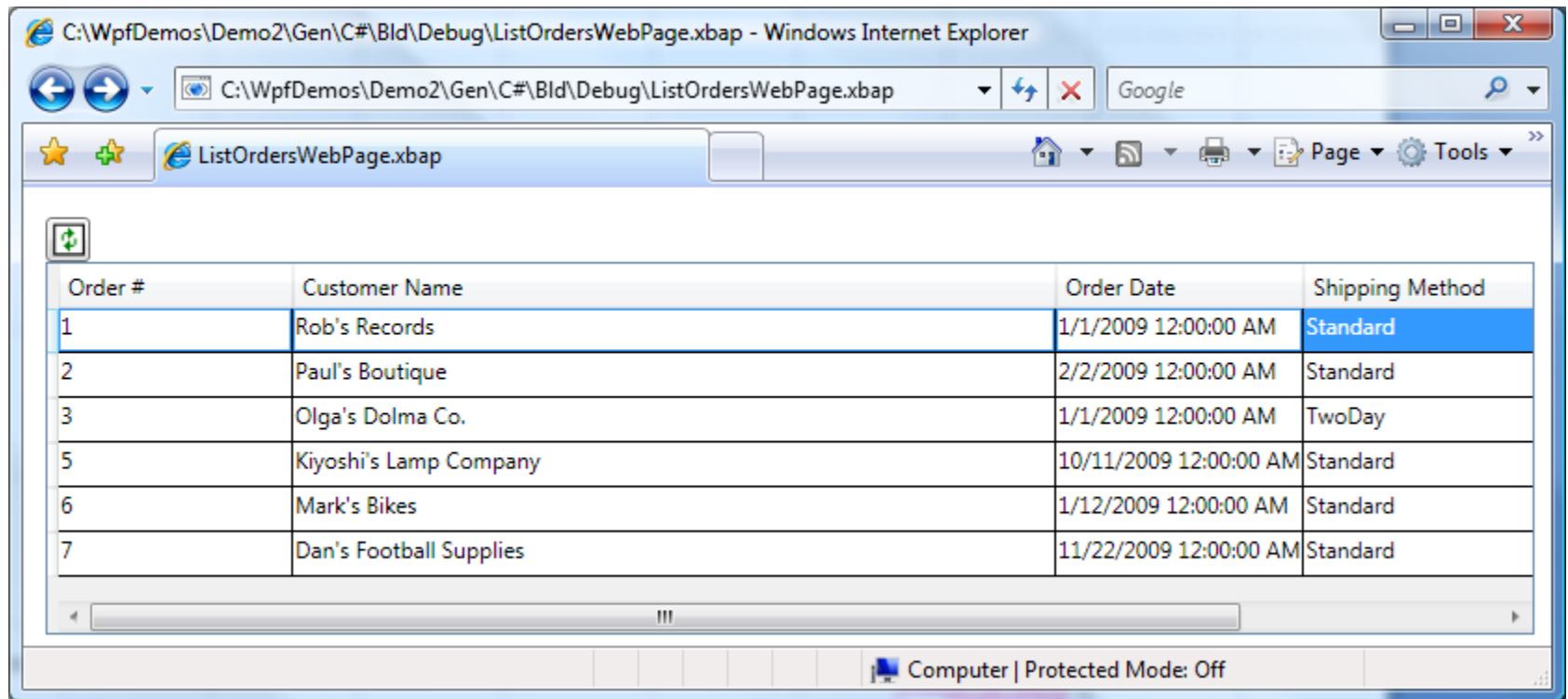
Plex Page Objects

- New Page object in Plex
- Similar to a Panel
 - Scoped to a Function
 - Use Same Editor
 - Similar Control Types
 - General XAML
- Compile as XBAPs
 - Run in Browser
 - Use Browser Navigation



CA Plex

Demo #3 - Plex-generated XBAPs



What's Missing?



What's Missing?

- Support for .NET Custom Components on Panels/Pages
- Integrated ClickOnce Deployment
- Fully Implementing Page objects
- Enhanced CSAPI Library

Summary



Summary

- We've already come a long way from Plex r6.1!
- WPF is here to stay
- What can you do now?
 - Start migration today!
 - Plex Packager Tool – Alpha available now for CA Plex r6.1
 - Nothing you do now is throw-away
 - Server won't change
 - Remember - backwards compatibility is built-in!

Contact robert.layzell@ca.com with any questions.

Q & A

