

cm FIRST
Rethink Modernization



ca. 2E/PLEX plex2e.com
2013 WORLDWIDE DEVELOPER CONFERENCE



HTML5 Hybrid Apps with CA Plex and CM WebClient



plex2e.com

CM First Group

- Information Technologies Services and Product Company
- Focus on Application Modernization on IBM environments
- Headquartered in Switzerland, Operations in USA, Italy and France
- 35 employees / over 400 customers
- CA Technologies for CA Plex / CA 2E / CA Repository
 - Sales, Services, CA SMART Certified Products
- CM First Products add value to CA Technologies Products
- Worldwide Sales through partner network



Application Development Solutions

Enterprise Architecture – Metadata

CM Meta Analytics for
CA Repository

Application Development Tools

Requirements

Analysis

CM
M3

Modeling

IDE / Code

CM
WebClient

QA / Test

Release

CA Plex / 2E

Worksoft
Certify for
CA Plex

Application Performance
Availability and
Monitoring

CA
APM

Application Lifecycle Management
CM
MatchPoint

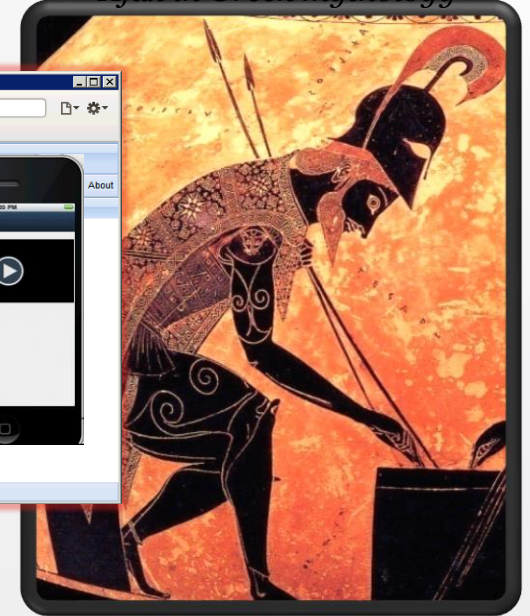
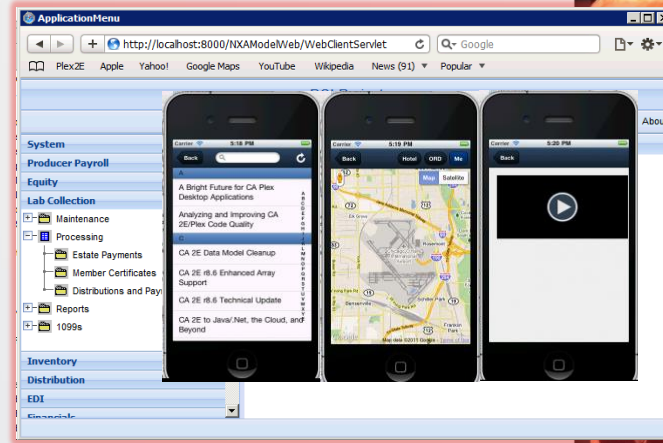
PTC/MKS Integrity for i
(CA 2E CM)

Project and Portfolio Management

Training Agenda

- Technology
- Hands On
- Wrap up

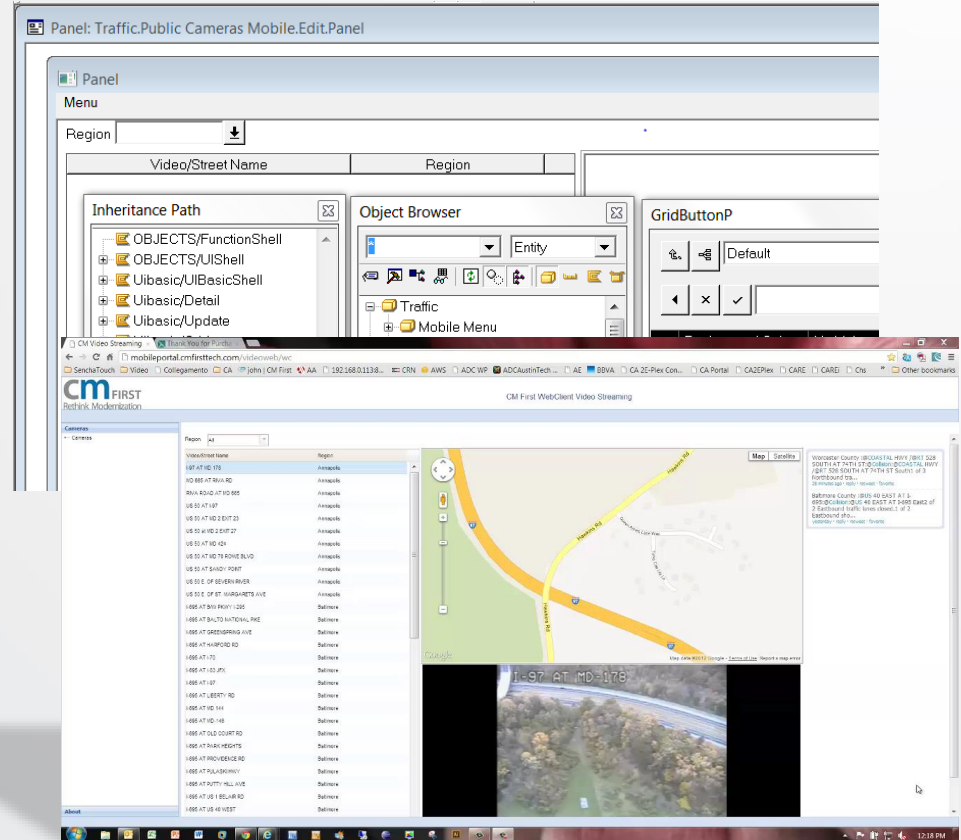
Ajax in Greek mythology



WebClient Code Once, with Existing Skills

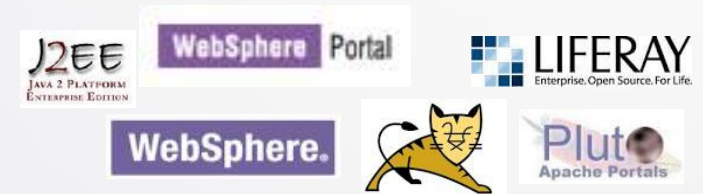
= Less **cost** and **risk**

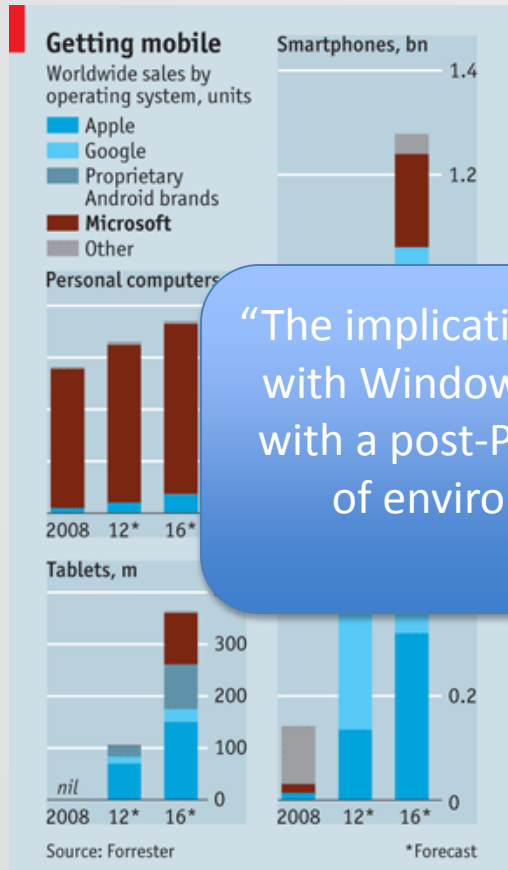
- Use Your Patterns
 - Foundation, Active, ...
 - OBASE (or your own)
 - Using Existing Designs
- From a Unified Code Base
 - Client-Server / 5250
 - Web
 - Mobile
- WYSIWG Page Design
 - *within Plex limitations



Develop Rich, Standards Based Apps

- Browser/Web Targets
 - Chrome, Safari, IE, Firefox
 - No Plug Ins!
 - Portals (Websphere, Liferay, ...)
- Mobile Targets
 - iPhone, iPad, Android, BB6+, Windows
- Server Targets
 - Websphere, Tomcat, JBoss, ...
 - Any back end Plex Supports
 - .NET, Java, IBM i/p, Unix, Linux, ...





- Microsoft currently has dominant share of desktop

– And will eventually have significant

“The implications for IT is that the era of PC dominance with Windows as the single platform will be replaced with a post-PC era where Windows is one of a variety of environments that IT will need to support,”

Gartner 2013

dominate

across all platforms by adding JavaScript and HTML5 to your desktop technology – CA Plex + CM WebClient

Definitions

- **Native apps** are built for a specific platform with the platform SDK, tools and languages, typically provided by the platform vendor (e.g. XCode/Objective-C for iOS, Eclipse/Java for Android, Visual Studio/C# for Windows Phone).
- **Mobile Web** apps are server-side apps, built with any server-side technology (PHP, Node.js, ASP.NET) that render HTML that has been styled so that it renders well on a device form factor.
- **Hybrid apps**, like native apps, run on the device, and are written with web technologies (HTML5, CSS and JavaScript). Hybrid apps run inside a native container, and leverage the device's browser engine (but not the browser) to render the HTML and process the JavaScript locally. A web-to-native abstraction layer enables access to device capabilities that are not accessible in Mobile Web applications, such as the accelerometer, camera and local storage

Hybrid Predictions

- April 16, 2013 - Gartner Recommends a Hybrid Approach for Business-to-Employee Mobile Apps

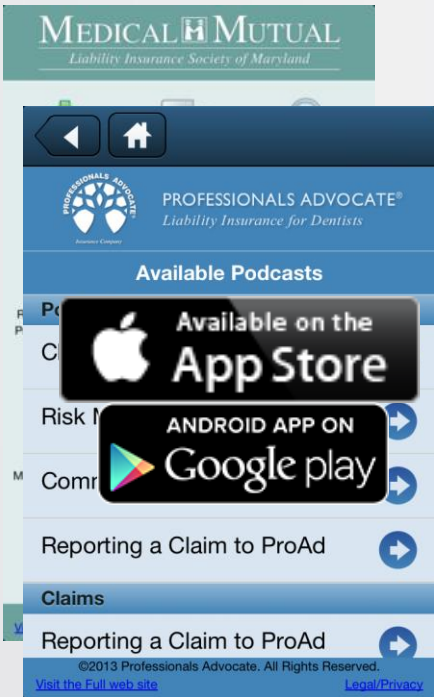
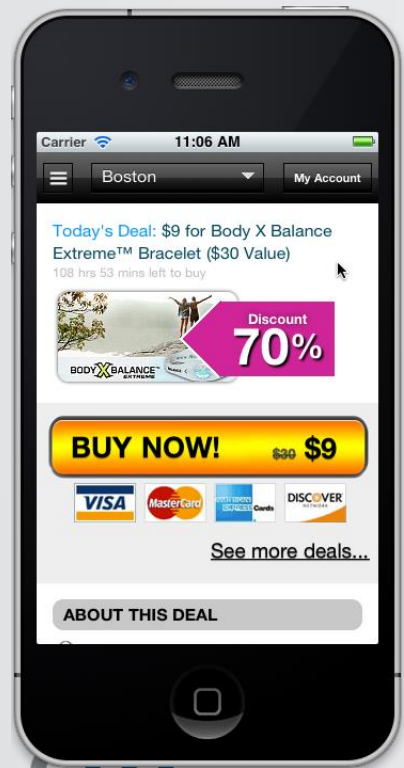
Category	Native Hybrid Web		
Consumer	40	40	20
Enterprise	10	60	30

Table 1
Consumer/Enterprise Split in 2015
Source: Gartner (November 2012)

Pragmatic Reasons

- Skills required – you probably already know HTML and CSS (or someone at your org does)
- Code/Test once (mostly)
- Performance and capabilities generally equal native

CM First Customer Example Touch Apps

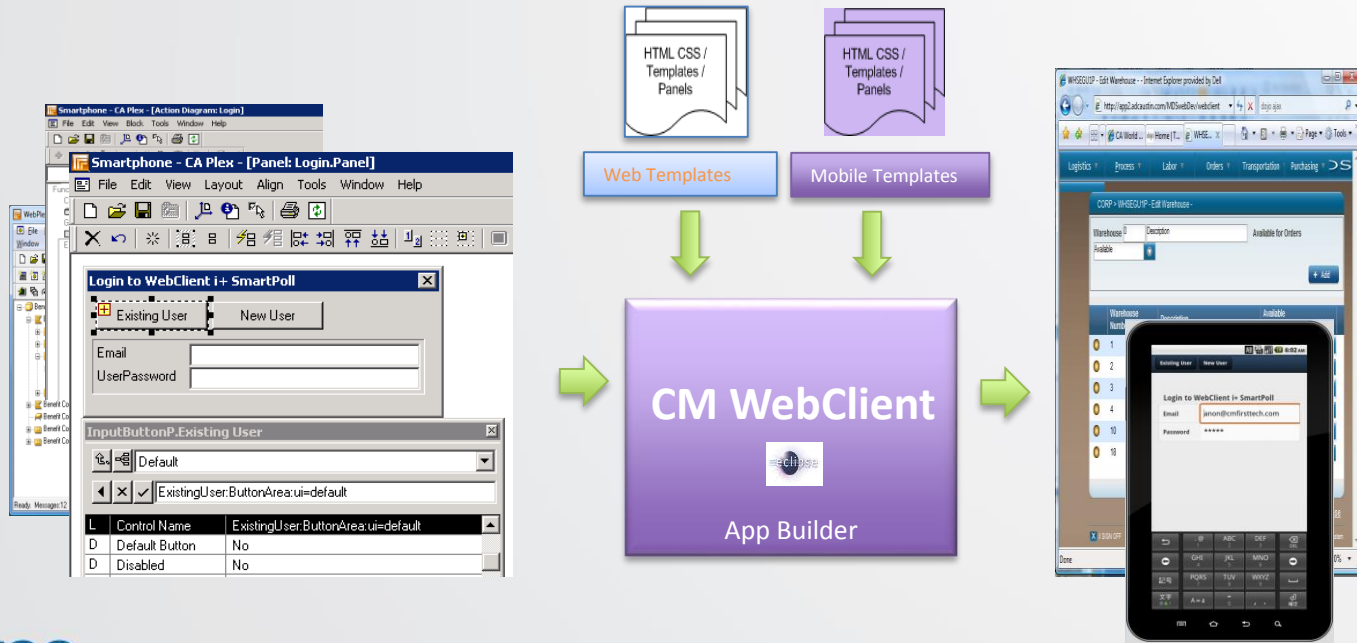


FIRST
Rethink Modernization



CM WebClient Technology

Development Architecture Overview



CA Plex+CM WebClient with Sencha Touch



cm FIRST
Rethink Modernization

Android + iOS



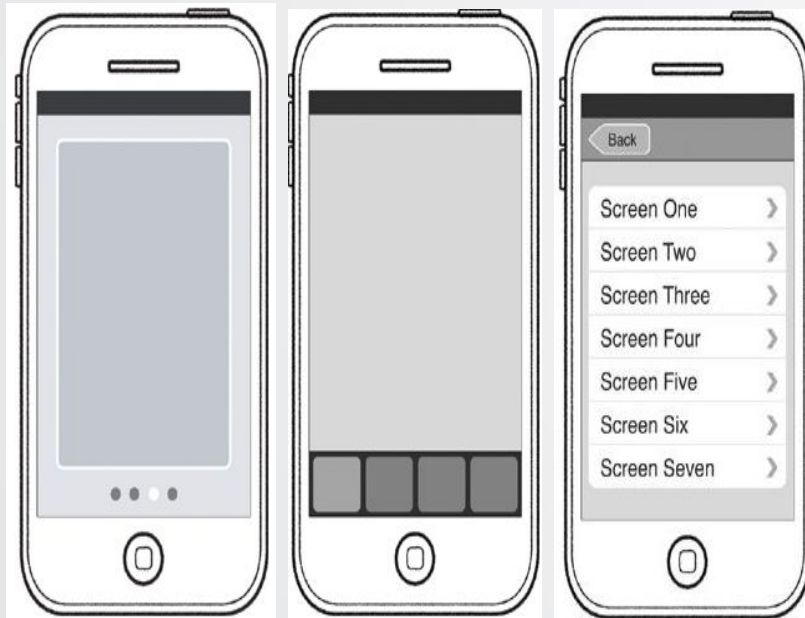
- Covers **virtually all** mobile traffic
- HTML 5, CSS3, ExtJS
- SaSS
- Local Storage
- Device JS (Phone Gap)



2013 WORLDWIDE DEVELOPER CONFERENCE

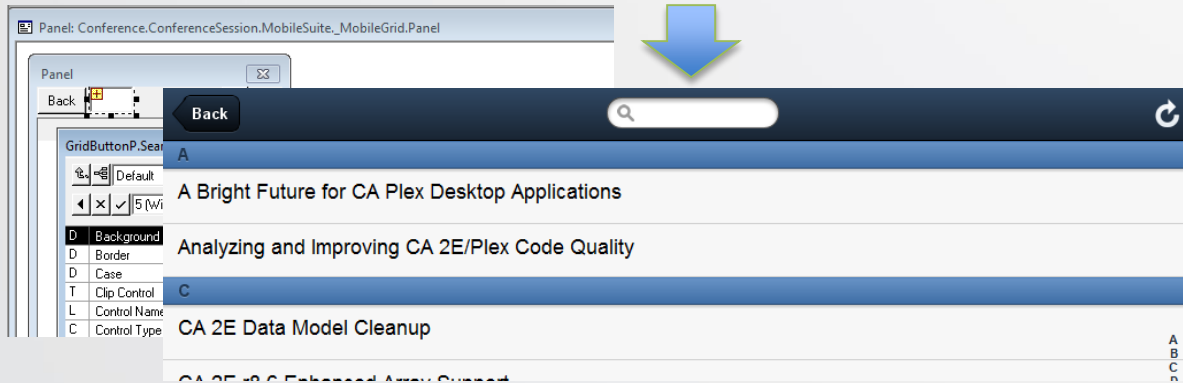
Navigation Models

Principals



How do we do this in Plex?

- By adding Control Name Directives
- Examples:
 - Search:ToolBarArea:toolbar=1:align=center:template=WebSearch



ToolbarArea, align, toolbarNum

Back	Search	Refresh
A		
A Bright Future for CA Plex Desktop Applications		
Analyzing and Improving CA 2E/Plex Code Quality		
C		
CA 2E Data Model Cleanup		
CA 2E r8.6 Enhanced Array Support		
CA 2E r8.6 Technical Update		
CA 2E to Java/.Net, the Cloud, and Beyond		
CA Plex .NET Client Generator – In Practice		
CA Plex for CA 2E Developers		
CA Plex Unicode support update Java, .NET and IBM i		
CA Plex WCF Services in the Cloud		
Customer Case: Service-Oriented Design In a Large CA Plex Project		
D		
DB2 for i: What is it today, and		

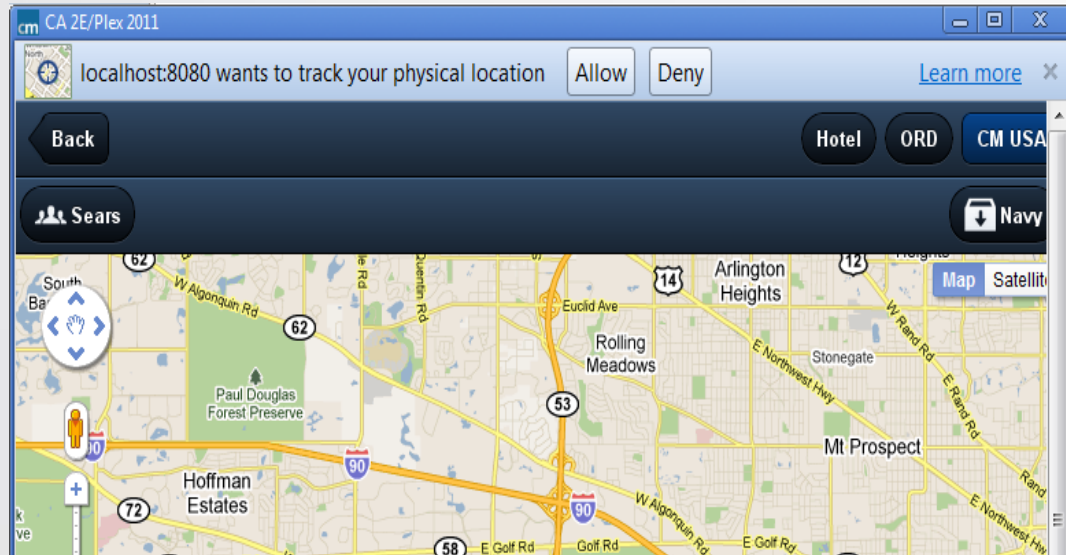
FullscreenArea

TabbarArea

Map

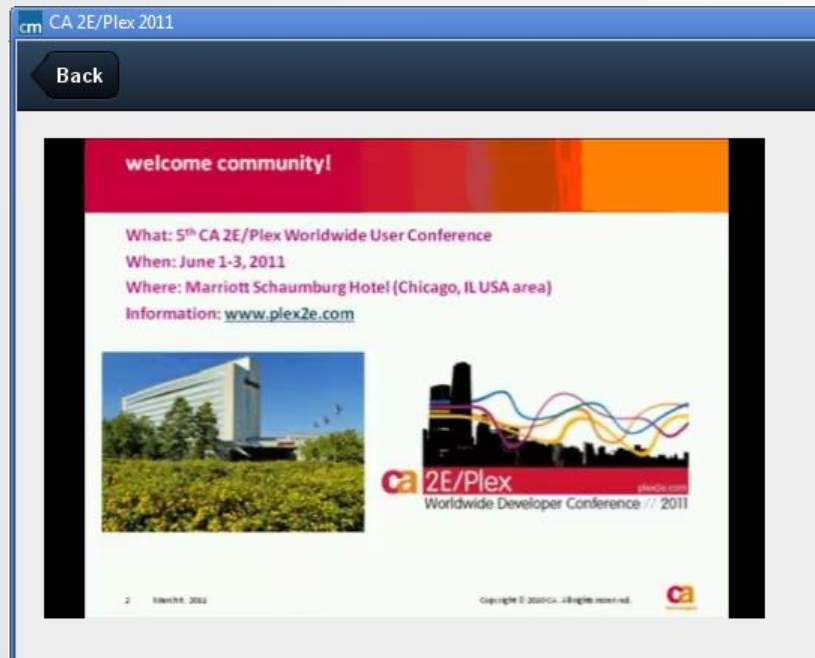
Attach a map template to fields

- MapCoords:FullscreenArea:template=WebMap
- MapLocation:FullscreenArea:template=WebLocation



Video

Attach a video template to fields
Video:FullscreenArea:template=Video





Mobile Features

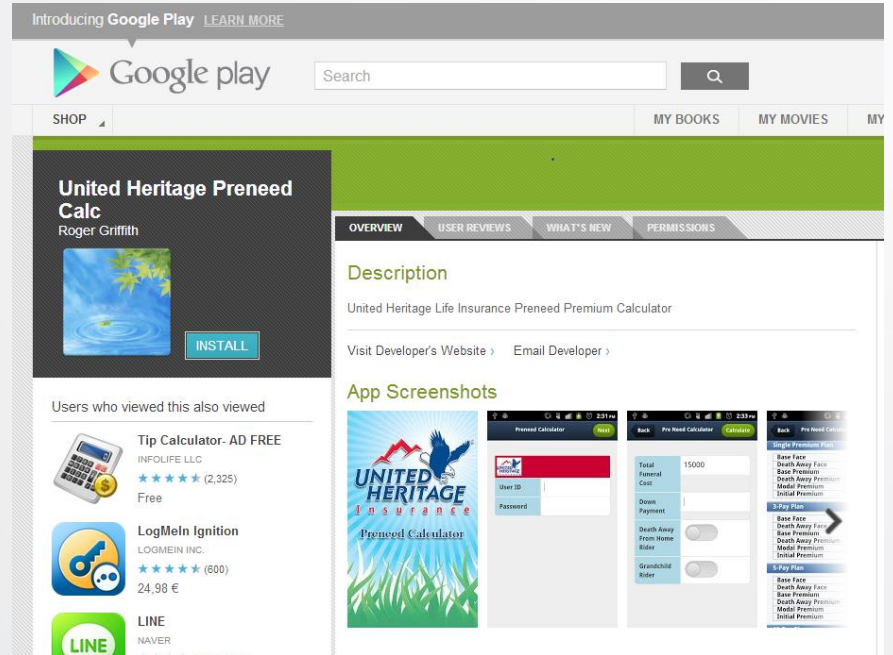
- Icon Menus
- Themes
- Advanced Geo
- Audio
- Video
- Email
- Address Book
- Local Storage
- Encryption
- Facebook Login
- Camera
- Signature
- Adobe Cordova (PhoneGap)
- HTML Forms
- Embedded pages
- Upload
- Mobile Service Pack Nov 2013



Device Support / PhoneGap



- Wrap HTML5 app
- Device support
 - Camera, address book, etc.
- App Stores
 - Google Play, iTunes




PhoneGap Build –

<http://build.phonegap.com>

Your apps


+ new app





CA 2e/Plex 2013 Con Helper


This is the app for the CA 2E/Plex Worldwide Developer Conference. The event will take place in Long Island, November 11-14 2013. You can browse the sessions and pick those that interest you most. The presentations will be uploaded and will be viewable after the conference. This application was generated directly from the CA


iOS















 Update code

 Rebuild all

App ID	Version	PhoneGap
621752	1.0.0	2.9.0
Owned by jdrhodes@cmfirsttech.com		
Last built (\$3) 5 days		
Source zip package		



 public page



Hands On

Cameras, Cameras Everywhere



Lessons Learned

- Next time, take the train



– Skyline Partnership



- Video streaming and sharing technology
 - Traffic Authorities
 - Law Enforcement
 - Border Protection
- Web and Mobile
 - Public Access
 - Private/Secure Access

Scenario

CM Video Streaming - Thank You for Purchasing

mobileportal.cmfirsttech.com/video/web/wc

SenchaTouch Video Collegamento CA John | CM First AA 192.168.0.113:8... CRN AWS ADC WP ADCAustinTech... AE BBVA CA 2E-Plex Con... CA Portal CA2EPlex CARE CAREI Cns Other bookmarks

cm FIRST
Rethink Modernization

CM First WebClient Video Streaming

Cameras

Region All

Video/Street Name	Region
I-97 AT MD-178	Annapolis
MD 885 AT RIVA RD	Annapolis
RIVA ROAD AT MD 885	Annapolis
US 50 AT I-97	Annapolis
US 50 AT MD 2 EXIT 23	Annapolis
US 50 AT MD 2 EXIT 27	Annapolis
US 50 AT MD 424	Annapolis
US 50 AT MD 70 ROWE BLVD	Annapolis
US 50 AT SANDY POINT	Annapolis
US 50 E OF SEVERN RIVER	Annapolis
US 50 E OF ST. MARGARETS AVE	Annapolis
I-695 AT BAY PKWY 1295	Baltimore
I-695 AT BALTO NATIONAL PKE	Baltimore
I-695 AT GREENSPRING AVE	Baltimore
I-695 AT HARFORD RD	Baltimore
I-695 AT I-70	Baltimore
I-695 AT I-83 JFX	Baltimore
I-695 AT I-97	Baltimore
I-695 AT LIBERTY RD	Baltimore
I-695 AT MD 144	Baltimore
I-695 AT MD 146	Baltimore
I-695 AT OLD COURT RD	Baltimore
I-695 AT PARK HEIGHTS	Baltimore
I-695 AT PROVIDENCE RD	Baltimore
I-695 AT PULASKI HWY	Baltimore
I-695 AT PUTTY HILL AVE	Baltimore
I-695 AT US 1 BELAIR RD	Baltimore
I-695 AT US 40 WEST	Baltimore

Map Satellite

Google

Map data ©2012 Google - Terms of Use Report a map error

I-97 AT MD-178

Worcester County :8COASTAL HWY /BRT 528 SOUTH AT 74TH ST:@Collins@COASTAL HWY /BRT 528 SOUTH AT 74TH ST South of 3 Northbound tra... 28 minutes ago · reply · newest · favorite

Baltimore County :BUS 40 EAST AT I-695:@Collins@BUS 40 EAST AT I-695 East of 2 Eastbound traffic times closer to 2 Eastbound sho... yesterday · reply · newest · favorite

About

12:18 PM

Q&A, Discussion

<http://cmfirstgroup.com>

cm FIRST
Rethink Modernization

