

cm FIRST
Rethink Modernization



ca. 2E/PLEX plex2e.com
2013 WORLDWIDE DEVELOPER CONFERENCE



CM WebClient for CA Plex

Roadmap and Presentation



CM First Group

- Information Technologies Services and Product Company
- Focus on Application Modernization on IBM environments
- Headquartered in Switzerland, Operations in USA, Italy and France
- 35 employees / over 400 customers
- CA Technologies for CA Plex / CA 2E / CA Repository
 - Sales, Services, CA SMART Certified Products
- CM First Products add value to CA Technologies Products
- Worldwide Sales through partner network



Application Development Solutions

Enterprise Architecture – Metadata

CM Meta Analytics for
CA Repository

Application Development Tools

Requirements

Analysis

CM
M3

Modeling

IDE / Code

CM
WebClient

QA / Test

CA Plex / 2E

Worksoft
Certify for
CA Plex

Release

Application Performance
Availability and
Monitoring

CA
APM

Application Lifecycle Management
CM
MatchPoint

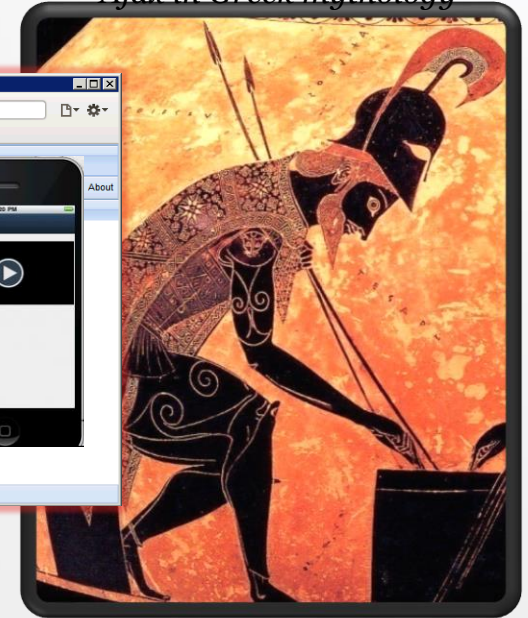
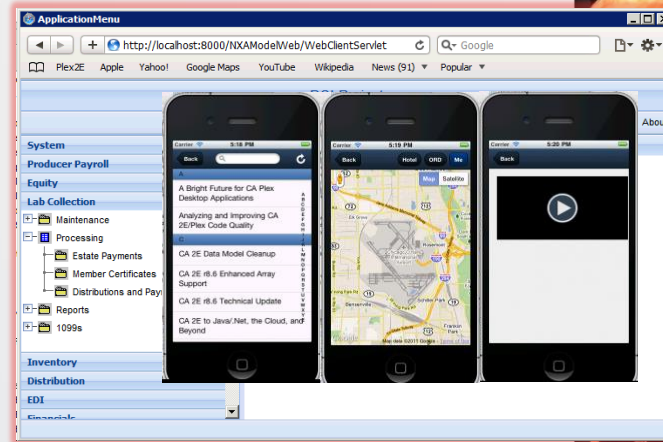
PTC/MKS Integrity for i
(CA 2E CM)

Project and Portfolio Management

CM WebClient Presentation Agenda

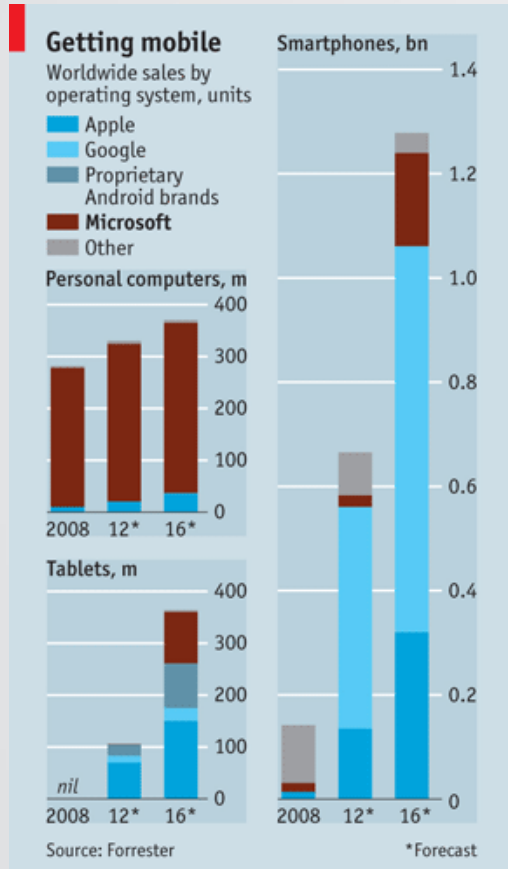
- Technology
- Features
- Demo
- Questions

Ajax in Greek mythology





Technology



- Microsoft currently has dominant share of desktop
 - And will eventually have significant tablet and phone share
- But Apple and Google dominate total devices
- Future-proof your apps across **all platforms** by adding **JavaScript** and **HTML5** to your desktop technology – **CA Plex + CM WebClient**

AJAX / JavaScript / HTML5 is the Web Standard

...and rapidly taking over mobile



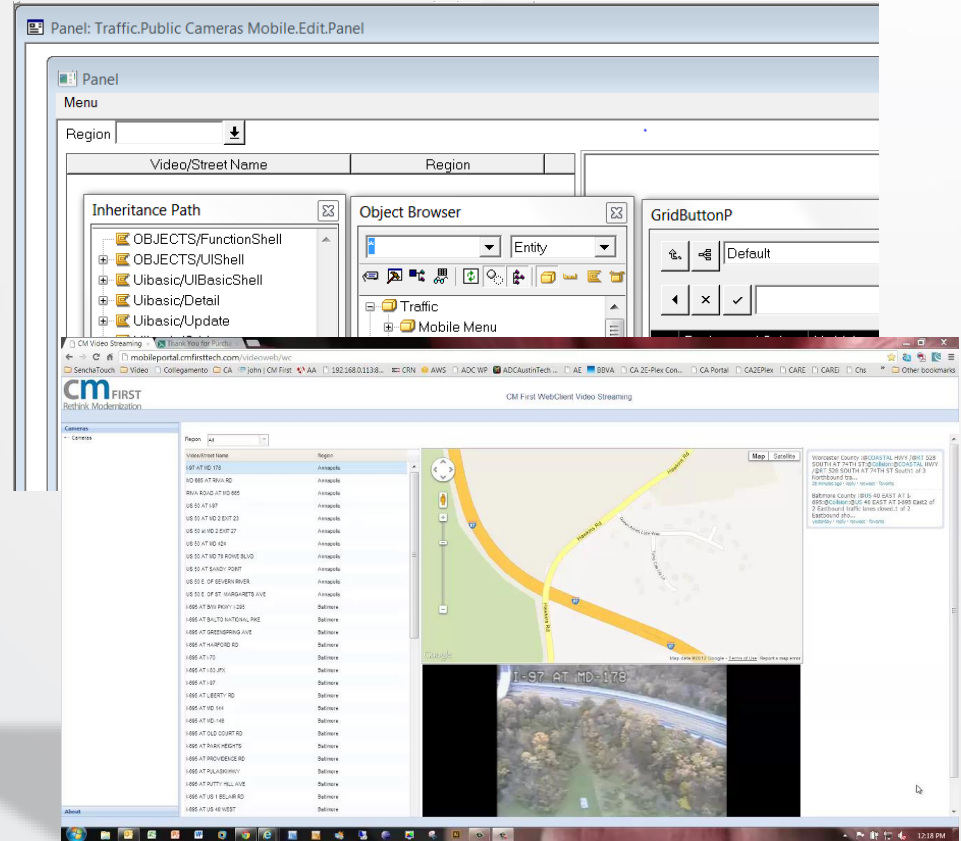
“Ajax remains the dominant RIA of choice, and HTML5 is poised to expand the power and flexibility of the browser only approach”

Gartner Group

Code Once, with Existing Skills

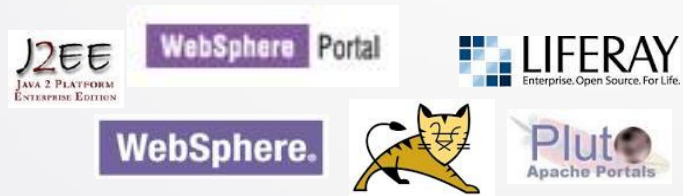
= Less **cost** and **risk**

- Use Your Patterns
 - Foundation, Active, ...
 - OBASE (or your own)
 - Using Existing Designs
- From a Unified Code Base
 - Client-Server / 5250
 - Web
 - Mobile
- WYSIWG Page Design
 - *within Plex limitations



Develop Rich, Standards Based Apps

- Browser/Web Targets
 - Chrome, Safari, IE, Firefox
 - No Plug Ins!
 - Portals (Websphere, Liferay, ...)
- Mobile Targets
 - iPhone, iPad, Android, BB6+, Windows
- Server Targets
 - Websphere, Tomcat, JBoss, ...
 - Any back end Plex Supports
 - .NET, Java, IBM i/p, Unix, Linux, ...





Current Features – 1.8.2 2013 Release

WebClient: Elevates your existing app and skills

- Coverage of The Standard UI Widgets
 - Including Tabs, Child Windows, Context Menus
 - Progress, Slider, Timepicker, Spin, Listbox, ...
- Plus Advanced Components
 - Advanced Grid
 - TreeView / FlexGrid / Outlook-Accordion
 - File Upload
 - Crystal Reports (New)



Complex UI? No problem!

The screenshot shows a web browser window displaying a web application. The browser's address bar shows the URL `http://localhost:8000/NXAModeWeb/WebClientServlet`. The application interface includes a sidebar with a list of menu items, a main content area with a table, and a bottom section with form fields. Several orange callout boxes highlight specific UI features:

- Drag n Drop**: Points to a blue header bar at the top of the main content area.
- Export to CSV**: Points to a button in the top right corner of the main content area.
- Filtering**: Points to a search or filter input field in the sidebar.
- Menu "Child" Top Application**: Points to a sub-menu item in the sidebar.
- Grid Column Menu**: Points to a context menu for the table columns.
- Accordion**: Points to a group of menu items in the sidebar that are expanded.
- Save Placement**: Points to a button at the bottom of the main content area.
- Scaling**: Points to a button in the bottom right corner of the main content area.

The table in the main content area has the following data:

Producer	Producer Name	Activity
000072	JEROME SMEENK	Producer
000876	TEST A	
000008	ROGER MARX	
000009	OLI WALLACE	

Web/Mobile Optimized

- Web and Mobile, Touch Optimized Templates
- Web User Interface
 - CSS / Themes
 - Advanced Menus
 - Enhanced Grid
- Portal (Portlet) Generation
- Standard Web Servers





Mobile Features

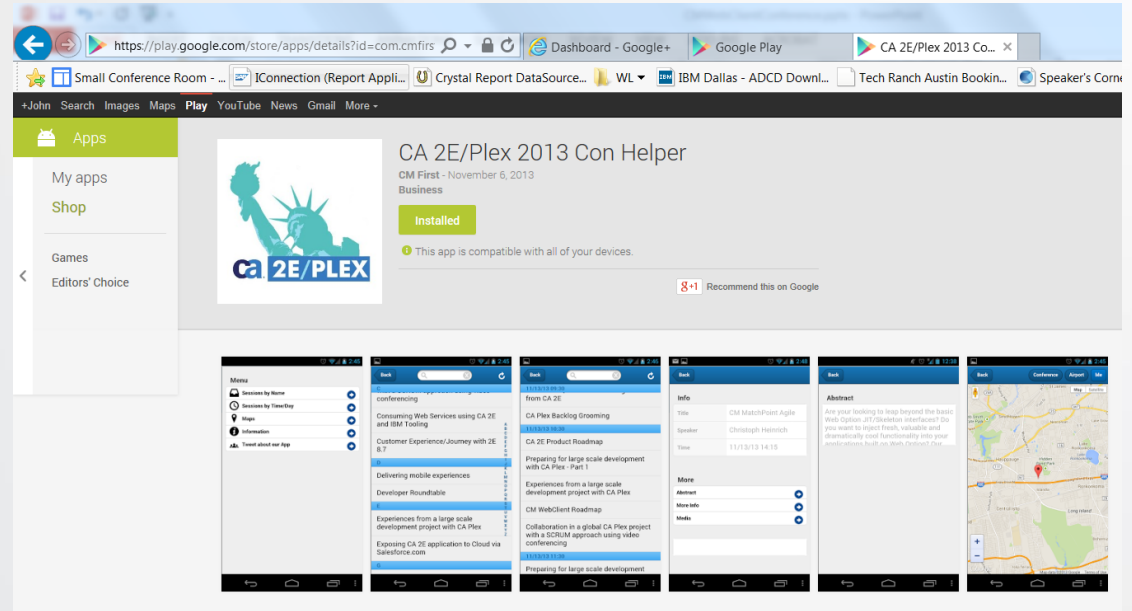
- Icon Menus
- Themes
- Advanced Geo
- Audio
- Video
- Email
- Address Book
- Local Storage
- Encryption
- Facebook Login
- Camera
- Signature
- Adobe Cordova (PhoneGap)
- HTML Forms
- Embedded pages
- Upload
- Mobile Service Pack Nov 2013

Device Support / PhoneGap

Conference Mobile



- Wrap HTML5 app
- Device support
 - Camera, etc
- App Stores
 - Google Play, iTunes



Crystal Reports (Part of Advanced Controls)

The screenshot displays the Crystal Reports design tool interface. The main window shows a report layout for a receipt. The header includes fields for Client, Receipt Seq, and Start Date, along with a logo for the 2013 Worldwide Developer Conference. The body contains a table with columns for PrintDate, Company, Amt, Seq, Time, and Date, and a section titled 'WH Detail'. The footer shows the page number.

The Object Browser on the right lists the following objects:

- CRTestEntity
- PrimaFUMenu
- _CrystalReportsXI
 - Abstract
 - FunctionShell
 - UndefinedParameter
 - JavaChangeDB
 - JavaCloseReport
 - JavaCreateReportClientDocument
 - JavaExportReport
 - JavaGetParameterField
 - JavaGetParametersFields
 - JavaLogonDatabase
 - JavaOpenReport
 - JavaPrintReport
 - JavaSetParameterField
 - JavaWebExport
 - JavaWebViewer
- UIShell

The Outline on the right shows the report structure:

- PrimaTestJava2.rpt
 - Report Header
 - Page Header
 - Section A
 - PrintDate1: PrintDate
 - Text1: Company
 - Text2: Amt
 - Text3: Seq
 - Text4: Time
 - Text5: Date
 - Text6: Client: {?Client}
 - Text7: Receipt Seq: {?Receipt Seq}
 - Text8: Start Date: {?Start Date}
 - Picture
 - Body
 - Section A
 - SCGSA1: {IMCUREP.SCGSA}
 - SCFAA1: {IMCUREP.SCFAA}
 - SCN6A1: {IMCUREP.SCN6A}
 - CUSTT1: {IMCUREP.CUSTT}
 - CUSTD1: {IMCUREP.CUSTD}
 - Section B
 - WH Detail
 - Report Footer
 - Section A

Crystal Reports Pattern Capabilities

- Logon to database
- Change datasource
- Pass parms
- Detect parm / datatype in report
- Crystal Report Web Viewer
- Export to PDF, XLS, etc.
- Print to printer
- And more...



Demo

Demos

CM Video Streaming - Thank You for Purcha...

mobileportal.cmfirsttech.com/video/web/wc

SenchaTouch Video Collegamento CA John | CM First AA 192.168.0.113:8... CRN AWS ADC WP ADCAustinTech... AE BBVA CA 2E-Plex Con... CA Portal CA2EPlex CARE CAREI Cns Other bookmarks

cm FIRST
Rethink Modernization

CM First WebClient Video Streaming

Cameras

Region All

Video/Street Name	Region
I-97 AT MD-178	Annapolis
MD 885 AT RIVA RD	Annapolis
RIVA ROAD AT MD 885	Annapolis
US 50 AT I-97	Annapolis
US 50 AT MD 2 EXIT 23	Annapolis
US 50 AT MD 2 EXIT 27	Annapolis
US 50 AT MD 424	Annapolis
US 50 AT MD 70 ROWE BLVD	Annapolis
US 50 AT SANDY POINT	Annapolis
US 50 E OF SEVERN RIVER	Annapolis
US 50 E OF ST. MARGARETS AVE	Annapolis
I-695 AT BAY PKWY 1295	Baltimore
I-695 AT BALTO NATIONAL PKE	Baltimore
I-695 AT GREENSPRING AVE	Baltimore
I-695 AT HARFORD RD	Baltimore
I-695 AT I-70	Baltimore
I-695 AT I-83 JFX	Baltimore
I-695 AT I-97	Baltimore
I-695 AT LIBERTY RD	Baltimore
I-695 AT MD 144	Baltimore
I-695 AT MD 146	Baltimore
I-695 AT OLD COURT RD	Baltimore
I-695 AT PARK HEIGHTS	Baltimore
I-695 AT PROVIDENCE RD	Baltimore
I-695 AT PULASKI HWY	Baltimore
I-695 AT PUTTY HILL AVE	Baltimore
I-695 AT US 1 BELAIR RD	Baltimore
I-695 AT US 40 WEST	Baltimore

Map Satellite

Google

Map data ©2012 Google - Terms of Use Report a map error

I-97 AT MD-178

Worcester County :8COASTAL HWY /BRT 528 SOUTH AT 74TH ST:@Collin@COASTAL HWY /BRT 528 SOUTH AT 74TH ST South of 3 Northbound tra...
28 minutes ago · reply · newest · favorite

Baltimore County :BUS 40 EAST AT I-695:@Collin@BUS 40 EAST AT I-695 East of 2 Eastbound traffic times closer to 2 Eastbound sho...
yesterday · reply · newest · favorite

About

12:18 PM



What is Next?

WebClient 2.0 – 2014

On the drawing board

- Planned Feature Set
 - More Mobile Templates
 - Tablet Optimized Templates
 - Offline storage model



Enterprise JavaScript

Google Web Toolkit
Showcase of Features

Text Input

Popups

Panels

- Decorator Panel
- Flow Panel
- Horizontal Panel
- Vertical Panel
- Absolute Panel
- Dock Panel
- Disclosure Panel
- Tab Panel
- Horizontal Split Panel
- Vertical Split Panel

Example CSS Style Source Code

CA 2E/Plex 2011 New Tab

cmfirst.jkerns.com

Panel

Integer A

Integer B

Result

+ - * / %

POC of Plex Application
Running Directly on
Device – No web
server or connection
needed, with local
storage

Q&A, Discussion

<http://cmfirstgroup.com>

cm FIRST
Rethink Modernization

