




## Enterprise Release and Application Lifecycle Management

## Enterprise Release Management Challenges




- Enterprise applications often have many different component systems spread out across different machines and platforms (e.g. Mainframe and Distributed)
  - There may be different tools used for source control
  - There may be different teams of developers working on different application sub-components
- The challenge: How do we coordinate the different activities so that changes move through the enterprise lifecycle in a coordinated fashion?

2

Enterprise Release Management Challenges

## pureSCM ALM for Enterprise Release Management

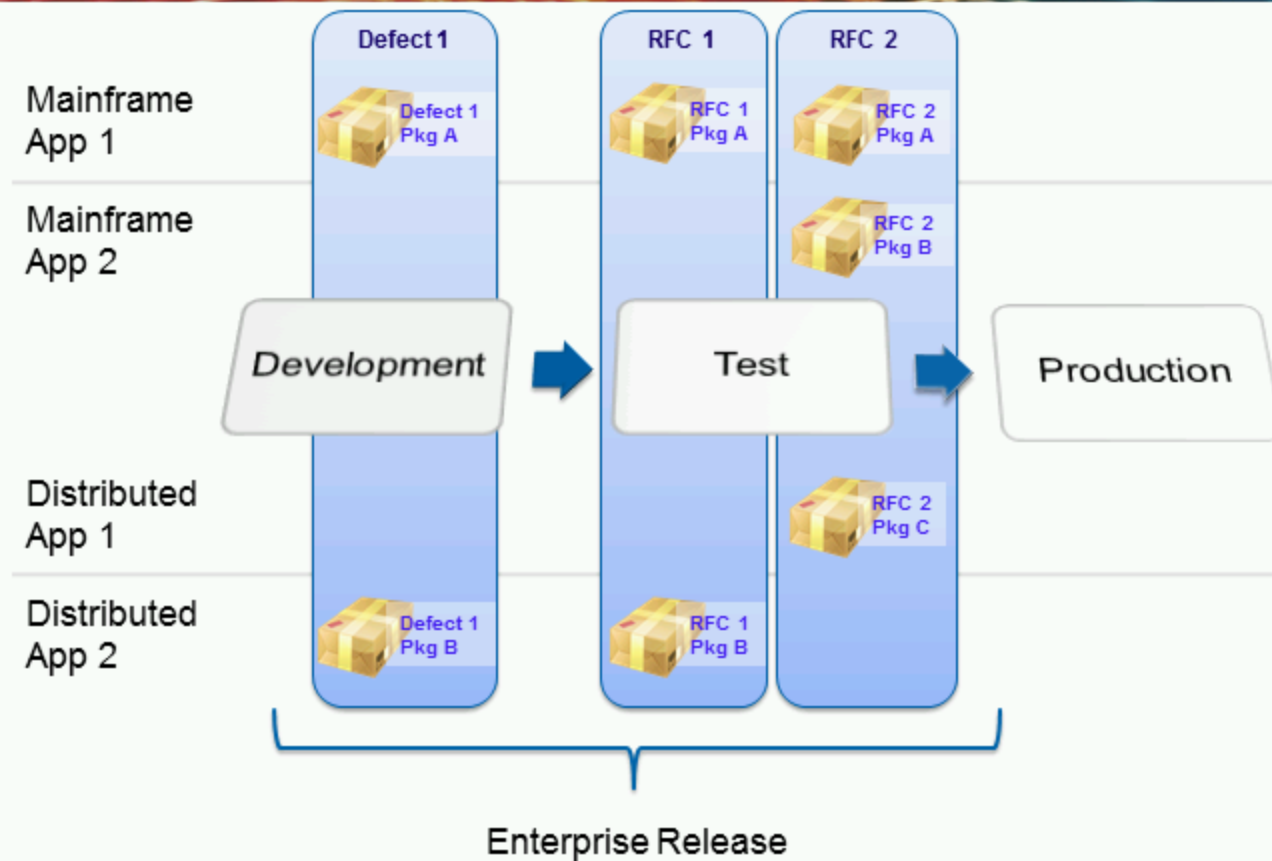


- pureSCM Application Lifecycle Management provides a solution to these challenges using its Release and Project Management services with its workflow engine and connector framework
  - Projects are created for Enterprise RFCs (Requests for Change) and grouped into an Enterprise Release
  - ALM Projects can be related to one or more packages in CA's mainframe & distributed source control tools – CA Endeavor and CA SCM
  - ALM Projects provide the “umbrella” to relate different component change packages to a single source RFC
  - ALM Releases allow projects to be managed together as a release to production

3

pureSCM ALM for Enterprise Release Management


## Enterprise Releases with ALM



4

Enterprise Releases with ALM

## ALM Connectors




- ALM integrates with other tools using a connector framework to standardize 3<sup>rd</sup> party APIs
- ALM connects projects, defects and/or requirements to CA SCM and CA Endevor change packages using a connector for each source control system
- In addition to relating packages to the release/project structure in ALM, connectors expose package management functions to the workflow engine, including:
  - Package creation according to a configurable naming convention
  - Package promotion/demotion/execution
  - Package approval/rejection

5

ALM Connectors

## ALM Connectors




- Combines with CA SCM Workbench and Endeavor to provide a single workbench for moving enterprise changes through the lifecycle
- The Endeavor connector is being expanded upon, the upcoming version will allow:
  - Package SCL view, edit and generation
  - Package Casting
  - Check out/in of Endeavor source

6

ALM Connectors

## ALM Endeavor Connector Requirements




- ALM connects to Endeavor using EDVCONX communication layer installed on the mainframe
  - No requirements on Endeavor web services
  - No requirements on Promotional Packages
  - Requires only that the Endeavor API is available
  - Supports Endeavor 4.0 and higher
- EDVCONX was developed to work with the ALM connector in partnership with leading Endeavor consultancy firm, INTEGRATIONS

7

ALM Endeavor Connector Requirements

## ALM Endeavor Connector Requirements




### —System requirements:

- z/OS 1.6 or above
- Security Solution (RACF, ACF2, or TopSecret) to limit access to the EDVCONX solution and the administrative functions
- EDVCONX load dataset must be APF authorized
- TCP/IP port is used for communications. Any requests for connection done on the specified port will be directed to EDVCONX

8

ALM Endeavor Connector Requirements

## pureSCM Application Lifecycle Manager



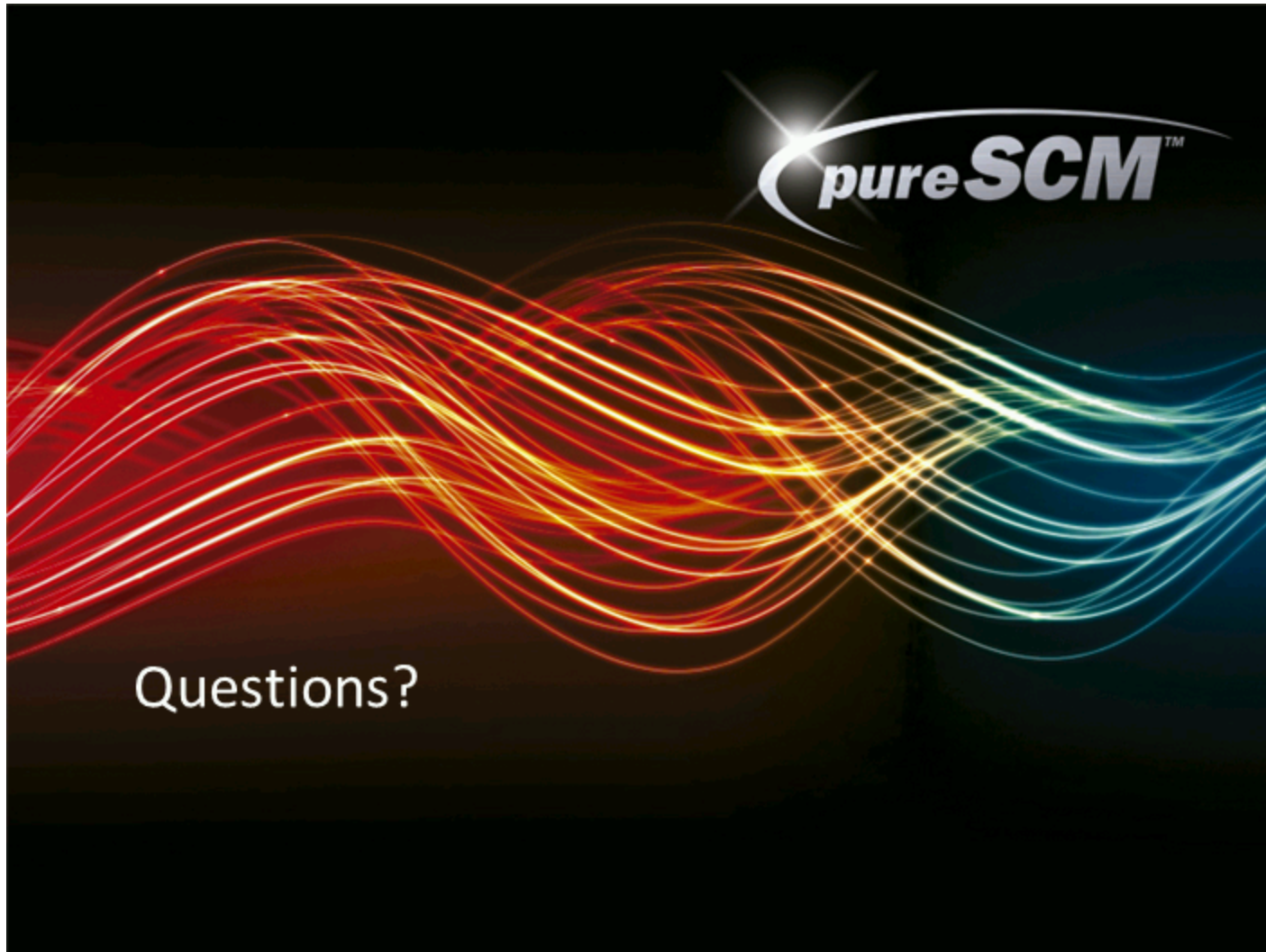
- Application Lifecycle Manager also provides services for additional lifecycle activities, including
  - Requirements Management
  - Test Case / Test Plan Management
  - Defect / Issue Management
  - Traceability / Reporting
- Lifecycle artifacts can be created & tracked directly in the tool or in connected third party systems
  - JIRA, OpenMake, HP Quality Center, etc.
- This allows related processes such as defect management to participate in the overall Enterprise Release effort

9

pureSCM Application Lifecycle Manager



Demonstration



Questions?