

# CA Gen and ASP.NET

Dalia Soliman  
Director, Development  
CA



## Agenda

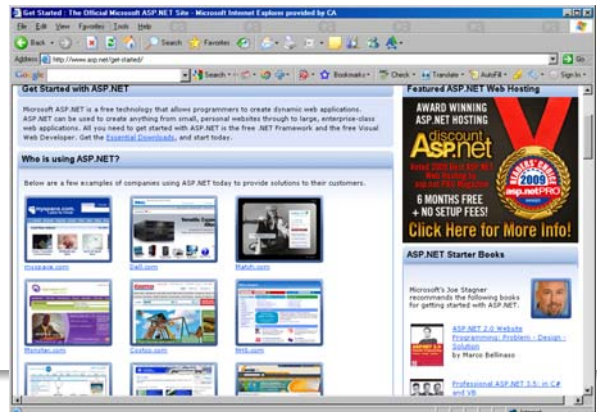
- > What is ASP.NET?
- > ASP.NET in CA Gen
- > ASP.NET Web Clients in CA Gen r8
- > Beyond CA Gen r8
- > Questions & Answers



# What is ASP.NET?

## From Microsoft's [www.asp.net](http://www.asp.net) website:

Microsoft ASP.NET is a free technology that allows programmers to create dynamic web applications. ASP.NET can be used to create anything from small, personal websites through to large, enterprise-class web applications.



## .Net in CA Gen r8

- > ASP.Net Web Clients
- > .Net Servers
- > .Net Proxies
- > Web Services based on .Net Proxies (newly supported in CA Gen r8)

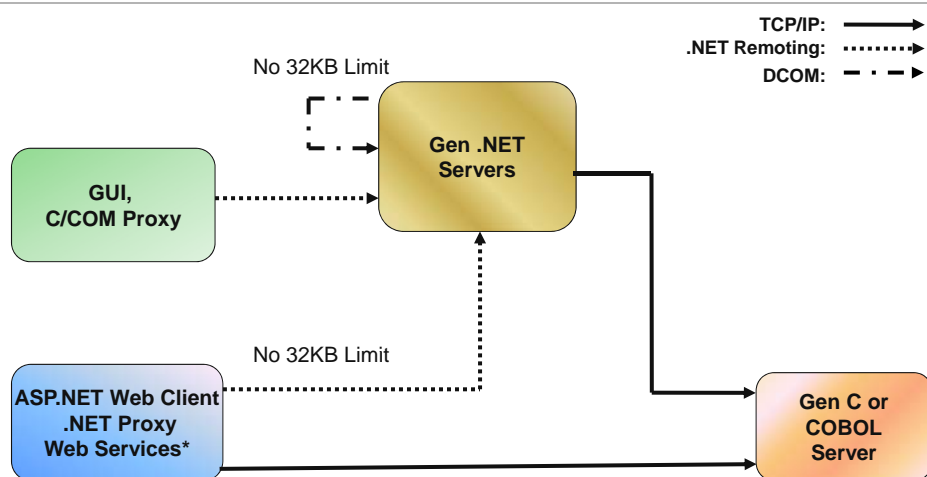


## CA Gen - ASP.NET Web Clients

- > Are 100% CA Gen-generated client applications.
- > Can communicate with the following servers:
  - .NET Servers
  - C Servers
  - Cobol Servers
- > Use C# for the application logic and ADO.NET for database access.
- > Dynamically create the user interface (HTML and JavaScript).
- > Targeted to Internet Information Services (IIS) on Windows XP, Windows Server 2003, Windows Server 2008 and Vista.



## Communications

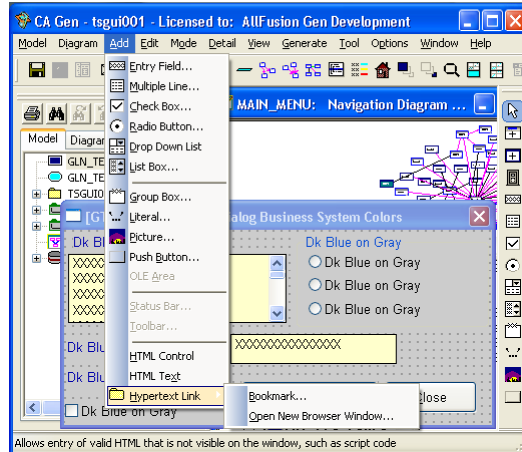


\* Web Services based on the .Net Proxy



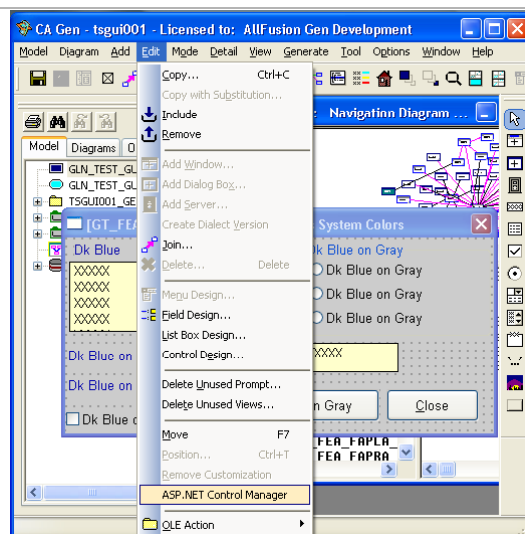
## Controls Available

- > The Navigation Diagram allows you to select standard Gen controls available for GUI applications.
- > ActiveX controls (OCXs) are excluded from .Net.
- > Additional controls:
  - HTML Control
  - HTML Text
  - Hypertext Link:
    - Bookmark
    - Open New Window
  - Button displayed as Hypertext Link
  - Fixed size Tables
  - Varying Size Table



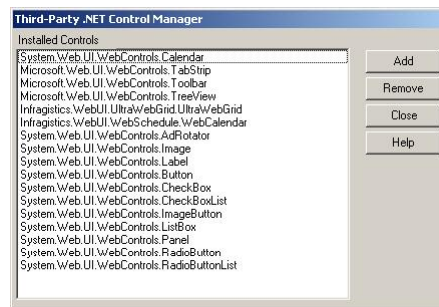
## ASP.NET Web Controls

Can be added through  
using the ASP.NET  
Control Manager.



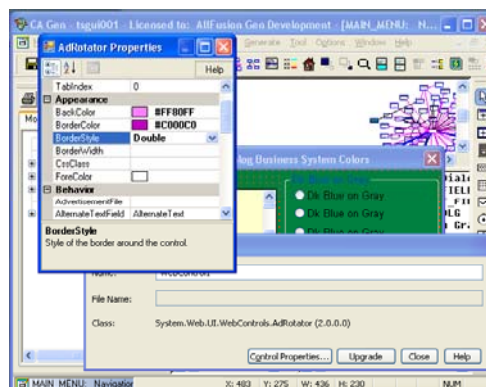
## Third-Party .NET Control Manager

- > Shows you the list of available 3<sup>rd</sup> party ASP.NET controls.
- > Allows you to remove & add ASP.NET Web Controls.



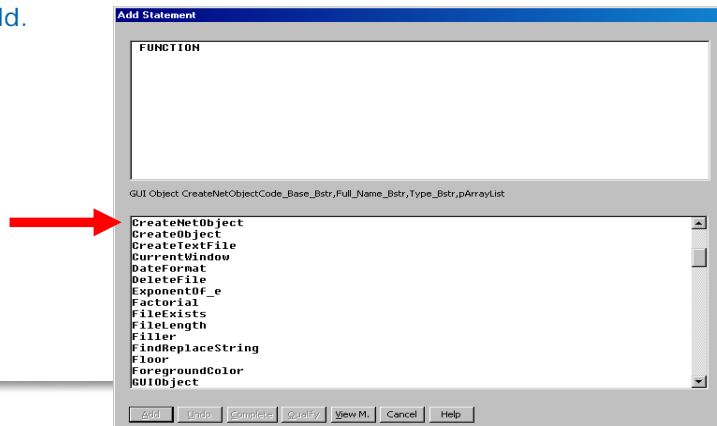
## Toolset ASP.NET Designer

- > Allows you to customize a 3<sup>rd</sup> party Web Control in the Navigation Diagram.
- > No External Files are necessary.



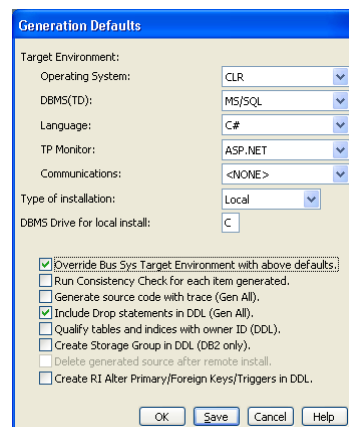
## CreateNetObject

- > Function/method available in ASP.NET Mode only.
- > Allows you to create an instance of an object in a specified .NET assembly.
- > Creates unlimited opportunities for Gen clients to interact with the external world.



## Generation Options

- **Operating System:** CLR
- **DBMS(TD):** uses Technical Design for selected DBMS. In reality it uses ADO.NET
- **Language:** C#
- **TP Monitor:** ASP.NET
- **Communications:** <None>



## CBD and ASP.NET Web Clients

- > Different Components can be individually:
  - generated
  - installed
  - uninstalled
- > The application name for Components expected to communicate HAS to be identical.
- > This allows installing different components in one application domain.



CA Gen r8  
Features



## CA Gen r8 ASP.NET Enhancements

In CA Gen r8, ASP.Net features focused primarily around 2 themes:

1. Application Performance
2. User Experience



ASP.NET Web Client

Application Performance



## ASP.NET Web Client Application Performance

- > ASP.Net AJAX
- > Creating JavaScript Libraries
- > Session management enhancements
- > ViewState optimization
- > New Compilation and Deployment Option
  - NGEN
  - Data Compression
  - Pre-compile ASPX Pages



## ASP.NET AJAX

- > From [www.asp.net/ajax](http://www.asp.net/ajax):

ASP.NET AJAX is the free Microsoft AJAX framework for building highly interactive and responsive web applications that work across all popular browsers.
- > AJAX stands for: Asynchronous JavaScript and XML.
- > It is a mechanism for developing interactive Web applications.
- > Allows portions of web pages to be updated asynchronously without having to reload the whole page.



## ASP.NET AJAX in CA Gen

- > Listboxes and Tables are usually the controls that contain significant amounts of data.
- > In CA Gen r8, they will be enhanced to use AJAX.
- > Only the data that is needed for display will be downloaded to the browser and cached in the table control at any given time.
- > When an event such as scrolling occurs, an asynchronous request to the server results in downloading more data.
- > This makes the pages more interactive.
- > Also the download time is shorter.



## Creating JavaScript Libraries

- > Applications generated prior to CA Gen r8 contained JavaScript as a part of each page.
- > CA Gen r8 created JavaScript libraries.
- > Once a library is referenced, it is cached on the browser.
- > The JavaScript libraries are textually compressed during our build process to reduce the download size.
- > This will make downloading JavaScript consume less time and bandwidth.



## Session Management Enhancements

- > Session State is a mechanism to associate application state with a particular user session.
- > It can be stored in one of two modes:
  - In-memory: In Proc
  - out-of-process: SQL Server or State Server
- > In Gen r8, Session State will:
  - Be optimized to reduce its size.
  - Purge expired session data proactively.
- > This positively impacts performance.



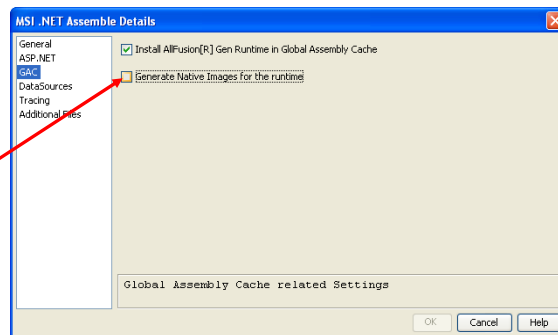
## View State Optimization

- > View State is used to hold the data for the controls on the page.
- > It restores the control data on Postbacks.
- > In CA Gen r8, the usage of View State was optimized to minimize the amount of data serialized and deserialized on every page.



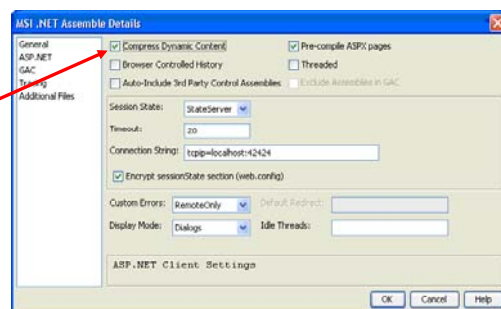
## NGEN

- > Is the Native Image Generator.
- > Is used to create platform specific "native code".
- > It enhances performance.
- > The Asseble Utility will have an option on the GAC tab.



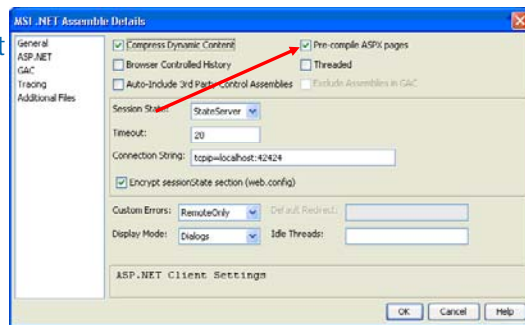
## Data Compression

- > Compress Dynamic content will be an option available at Asseble time
- > If selected, it will enhance the performance of your application
- > Compression uses the GZIP compression algorithm
- > This content is streamed to the browser and automatically de-compressed by the browser



## Pre-compile ASPX Pages

- > ASPX pages need to be compiled to produce the HTML/JavaScript necessary to render the user interface.
- > Normally, compilation occurs when a page is first requested.
- > The option to Pre-Compile ASPX Pages causes the compilation to occur upon deployment.
- > It reduces load time at startup.



ASP.NET Web Client

User Experience

## ASP.NET Web Client - User Experience

- > Themes and Skins
- > Tabbed Browsing
- > Integrating a Web Server (Cassini) in the Toolset
- > DataSource changes
- > WiX



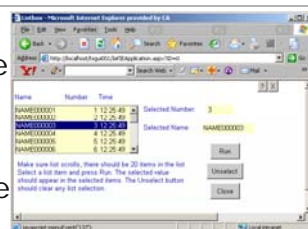
## Themes and Skins

### > Themes:

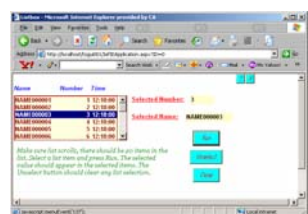
- are a collection of files that can be applied as a single entry to define the appearance of controls in the application.
- each theme has a folder under the Web Server.

### > Skins:

- are visual attributes for individual controls.
- are stored in a file with the extension of .skin under a theme folder.
- Will define the appearance of Gen controls.



Without Theme



With Theme



## Themes and Skins in CA Gen ASP.NET

> Each application can define a theme at Assemble time.

> You can create .skin files under application hierarchy.

> The web.config file will contain:

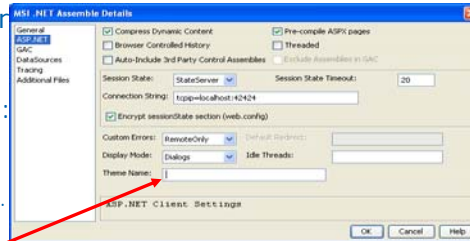
```
<configuration><system.web>
```

```
<pages theme="<themeName>" /> ..
```

```
</system.web></configuration>
```

> An example skin file, Gen\_Sample.skin, is included in CA Gen's sample\ASP.NET directory.

> You can override the skin information using dynamic attributes or dot notation.

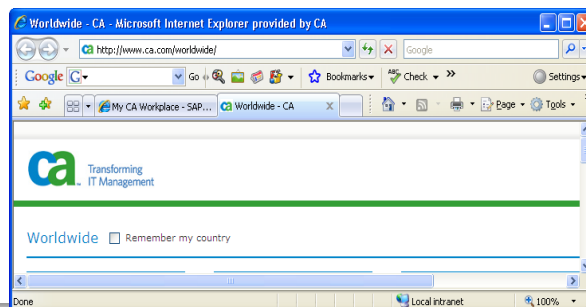


## Tabbed Browsing

> This is a feature available in I.E. and other browsers.

> CA Gen applications will run in different browser tabs.

> This includes **both** different instance of a single application or different applications.



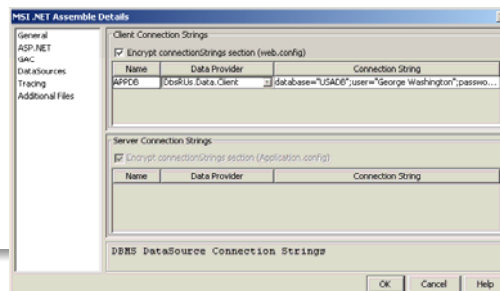
## Integrating a Web Server (Cassini) in the Toolset

- > The Toolset is capable of displaying 3<sup>rd</sup> party Web Controls in the Navigation Diagram by creating an ASPX file dynamically.
- > The ASPX file has to be deployed to an application Server to compile and turn its contents to HTML.
- > In AllFusion Gen r7.6, IIS was required to run on the Toolset system to render these controls.
- > CA Gen r8 bundles Cassini the Toolset so you are no longer required to install IIS.



## DataSources

- > The DataSources now have entries in the Assemble tool.
- > You can now specify the connection string in the Assemble tool instead of in external XML files.
- > datasourceinfo.xml and odbcdbmsinfo.xml are no longer used.
- > There are 4 certified data providers (System.Data.SqlClient, System.Data.ODBC, IBM.Data.DB2, Oracle.Data.Client). You can add a custom provider.





## Encryption

- > You can also encrypt the Connection String.
- > You can encrypt the Session State information.
- > To modify encrypted/decrypted information, users may need to configure IIS to add an RSA Key Container to their application.
- > You can use the following command to decrypt and re-encrypt specific sections:
  - aspnet\_regiis.exe



## WiX

- > WiX is Windows Installer XML.
- > It is a method of creating MSI packages.
- > Gen r8 will use WiX during Assemble of GUI and .NET applications.
- > The major objectives of using WiX in Gen are:
  - You can customize the web.config template shipped with Gen.
  - Eliminates the need to purchase Visual Studio for building and assembling ASP.NET Web Clients and .NET Servers. The .NET Framework and the Microsoft SDK will be sufficient.

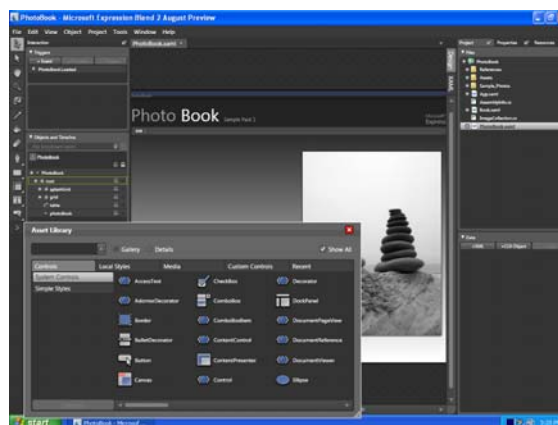


## Beyond CA Gen r8



## Modernizing the Toolset UI Design

- > Beyond CA Gen r8, we are investigating modernizing the Toolset User Interface Design for GUI and ASP.NET applications.
- > One of the goals is to maintain all the artifacts in the model.
- > We are exploring opportunities to utilize a third-party tool such as Microsoft Expression.



## Summary

- > What is ASP.NET?
- > How to design, generate, build, and assemble an ASP.NET Web Client
- > ASP.NET Web Clients in CA Gen r8
- > Beyond CA Gen r8



## Disclaimer

CA reserves the right to modify any plans regarding any future deliverables addressed in this presentation



## Questions and Answers

