

CA 2E Modernization To Java/Ajax Using CA Plex

Overview & Demonstration

A Multitude of Ways to Modernize



ADC's M3

Model-based Migration Methodology

The screenshot displays three overlapping windows illustrating the ADC's M3 Model-based Migration Methodology.

Session A - [24 x 80] (Terminal Window):

```
File Edit View Communication Actions Window Help

ITPLUI06
CORP
Warehouse .
Area . . .
Type options
5=Details

? Sell by
Date
- > 2/09/08
- > 2/09/08
- > 2/09/08
- 6/02/08
- 6/02/08

F3=Close F4=
">" Implies I

MA a
I902 - Session success
```

MAT Logistics (Windows/iSeries) - [ITPLUI06 - List Item Pallet] (Application Window):

Distribution Center: CORP

Add

Warehouse: 1

Area: 01

W-Date	LT	Current	Flag	S	D
>				2/9	
>				2/9	
>				2/9	
				6/2	
				6/2	

WHSEGU1P - Edit Warehouse - Internet Explorer provided by Dell (Web Browser Window):

http://app2.adcaustin.com/MDSwebDev/webclient

dojo ajax

Logistics Process Labor Orders Transportation Purchasing

CORP > WHSEGU1P - Edit Warehouse -

Warehouse 0 Description Available for Orders

Available

+ Add

	Warehouse Number	Description	Available for Orders
●	1	Central Warehouse 1	Available
●	2	Secondary Warehouse	Available
●	3	Freezer Warehouse	Not Available
●	4	Refrigerator Warehouse	Available
●	10	Off Site Warehouse	Available
●	18	Off Site Warehouse	Available

Close

X SIGN OFF

McLane Distribution System

Done

Internet | Protected Mode: Off

100%



The **Right** Way

Know before you buy

- **Effective modernization requires:**

- High levels of automation, approach 100%
- maintainability by existing staff
- web applications and SOA out of the box

- **Few get it right**

- **ADC does**

- M3 methodology

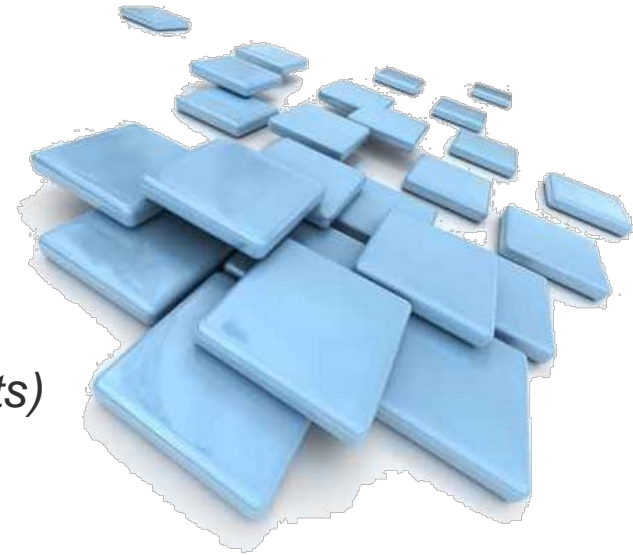




The M3 Way

Automated modernization with refactoring

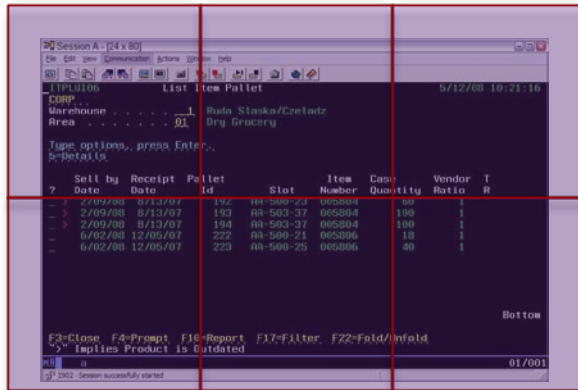
- **More than a tool – an entire methodology**
 - fast & maintainable
 - +multiplatform, +web, +SOA
- **Avoid costly risks:**
 - web facing / screen scraping (*dual environments*)
 - manual migration (*uneven quality, cost*)
 - syntax translators (*maintainability, “JOBOL”, runtimes*)
 - packages (*acquisition & customization expense*)



M3 Process

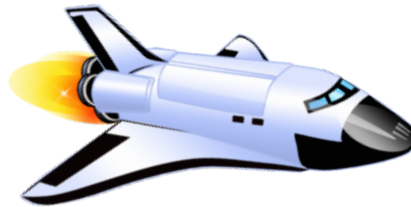
XML based design migration

Original 5250



- CA 2E (Synon) models & generated applications
- Native:
 - RPG
 - COBOL
 - CL/i5/OS artifacts

Analytics
(Discovery Services)



- Native code modernization
- Worksoft Certify regression testing

New Environment (SOA & Web)



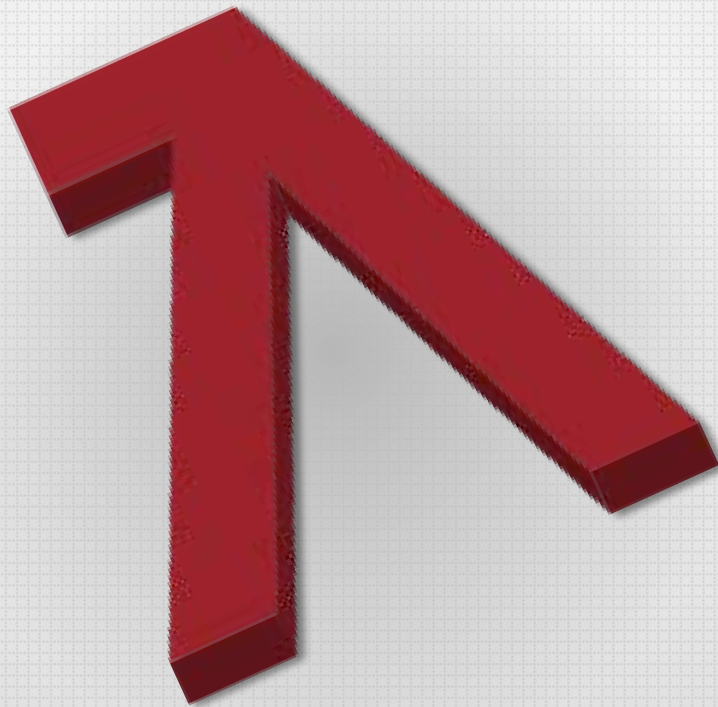
IBM System i™



Microsoft
SQL Server

IBM DB2

ORACLE®



Demonstration



Summary

More than modernization

- **Refactoring = business advantage**
 - new business logic
 - SOA / open access
- **New development process**
 - no screen scraping
 - no syntax translation
- **New application capabilities**
 - user-friendly features (tabs, wizards, portals, etc.)





M3 Site

Click image to view

