



Web Client Mobile Workshop

Contents

Introduction	3
Software Prerequisites.....	3
3 rd Party Software that must be installed separately	3
Software included in workshop download	3
Optional Software	3
Installation	3
Recommended Hardware	3
Installation Steps.....	3
Exercise 1 – Orientation and Hello World.....	8
Configure Eclipse.....	8
Run the default Application	11
Troubleshooting	12
Inspect CA Plex Model	12
Create a Hello World initial menu.....	12
Exercise 2 – Create a menu and a session grid	14
Exercise 3 – Create detail pages	17
Exercise 4 – Maps and location services	21
Exercise 5 – Videos and links	24
Exercise 6 – Appearance	28
Exercise 7 – Native App Deployment.....	30
Congratulations!	36
Appendix – Attach Points.....	37
Appendix - Reference.....	38
Button Appearance	38
Partial ui list (see sencha documentation).....	38
Animations	39
Appendix – Configure and Check your SQL Server Access from Eclipse.....	40

Introduction

The cm WebClient i+ Mobile product is designed to generate a first class native mobile device interface for all Sencha Touch supported mobile platforms, including Apple, Android, BlackBerry 6, and others. Through the use of PhoneGap, the application can also be deployed as a native app using XCode for Apple or Eclipse for Android. This will give the developer the ability to publish WebClient mobile apps on the Apple iTunes Store or Android Marketplace, and to make use of advanced phone hardware by the use of JavaScript API's.

For this workshop, you are working with a WebClient Alpha product. The beta is scheduled for June 2011.

Software Prerequisites

3rd Party Software that must be installed separately

- Chrome or Safari (WebKit) Browser for desktop testing
- CA Plex v6.1
- SQL Server 2008
- Java JDK version SE 6 Update 25 or higher
- Tomcat 6.0

Software included in workshop download

- WebClient 1.6.3
- Sencha Touch JavaScript component library
- Android SDK with Android device emulator
- PhoneGap, used to deploy a native application

Optional Software

- Apple iOS SDK (requires Apple Mac computer)

Installation

Recommended Hardware

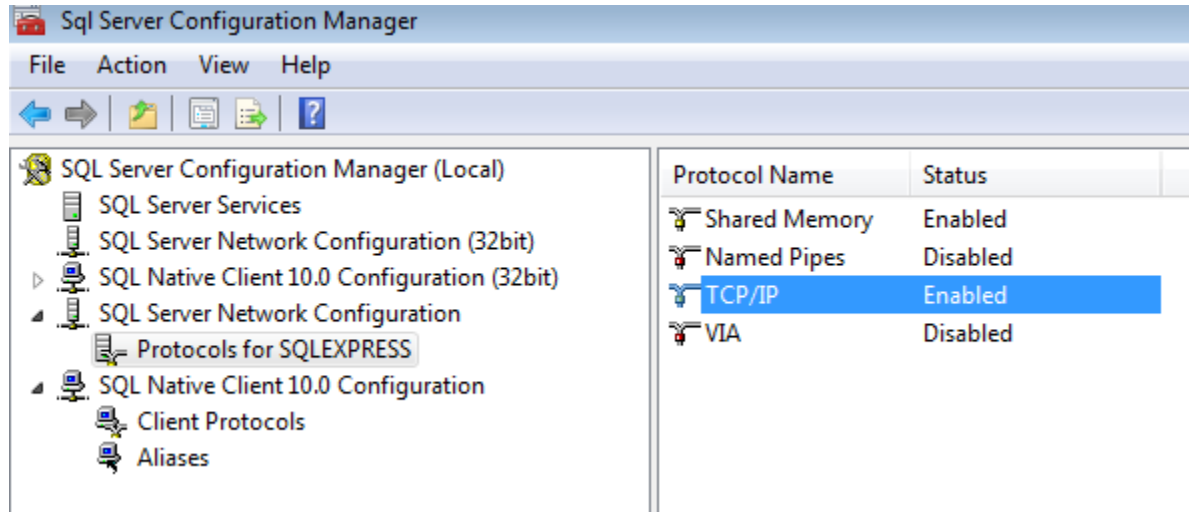
- Dual core processor
- 2GB Ram or more
- 5 GB free disk space

Installation Steps

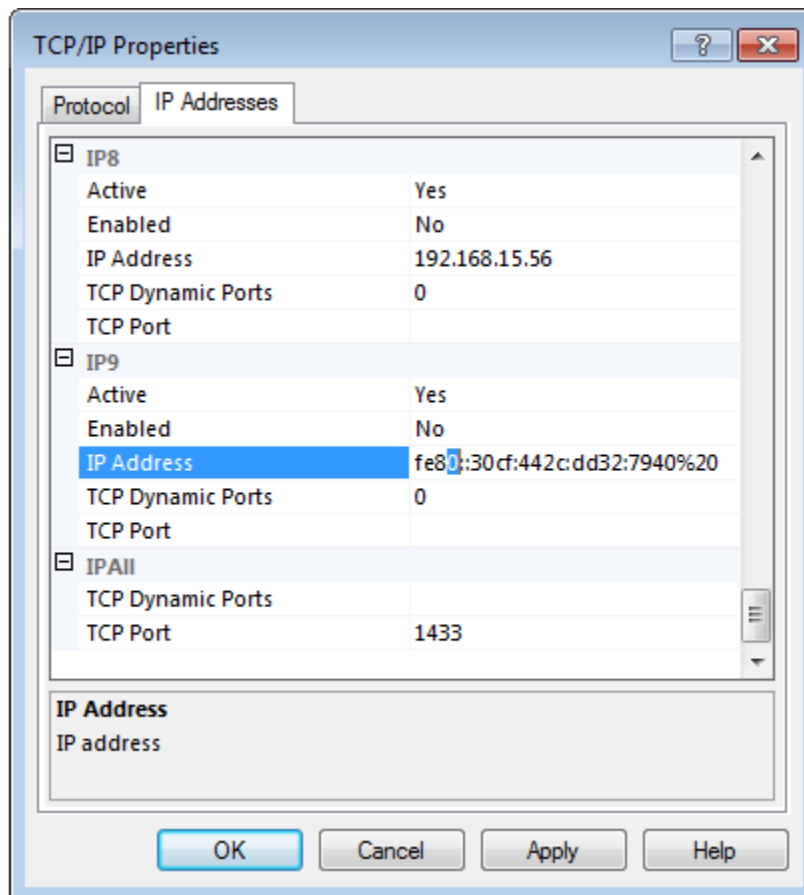
- Install CA Plex 6.1. Please contact CM First if you would like an evaluation copy.
- Install either Google Chrome or Apple Safari current version browser
- Install SQL Server Express 2008 from Microsoft: <http://www.microsoft.com/express/Database/>
 - Important – **Install with Mixed Mode Authentication**

- Important – Remember the sa password you created
- Important – Ensure that you can access the SQL Server instance from CA Plex from a non-integrated mode ODBC connection. You may have to adjust your local firewall setting or SQL Server port settings.

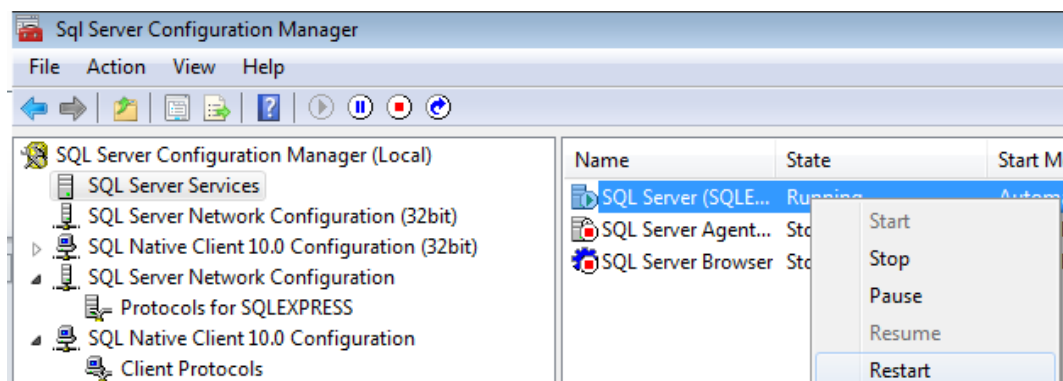
Enable TCP/IP Protocol by opening the SQL Server Configuration Manager. Ensure that TCP/IP is enabled under every configuration tree.



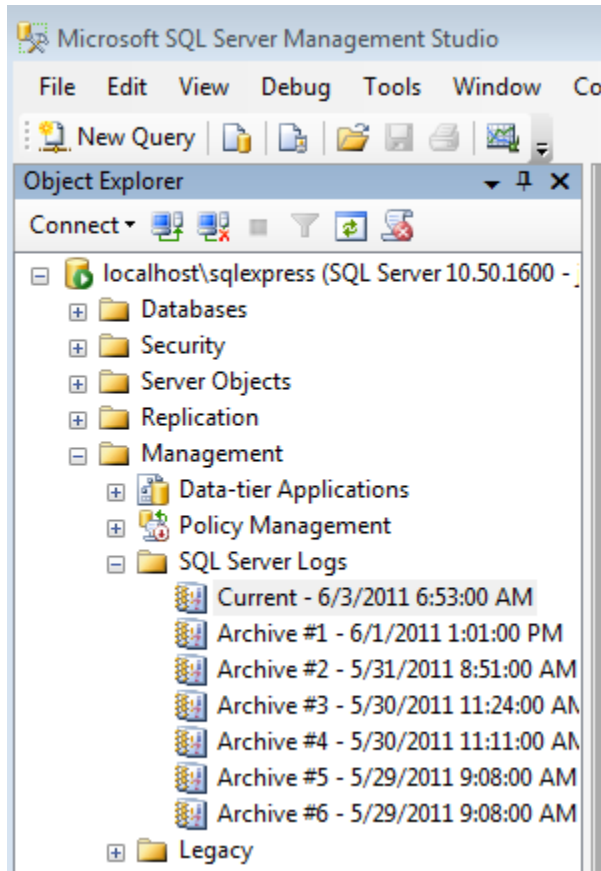
Right click on the protocol and select properties. Ensure that the IPALL setting has a blank value in TCP Dynamic Ports and 1433 in the TCP Setting



Restart the SQL Server Service



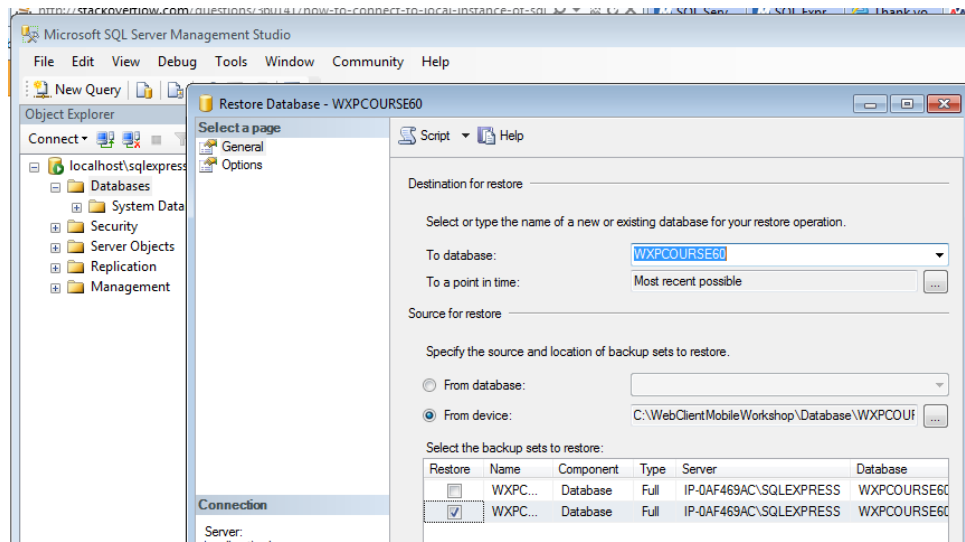
Open up SQL Server Management Studio. Under your SQL Server instance, go to Management / SQL Server Logs.



In the current log, verify that there are lines for Mixed Mode authentication, and that SQL Server is listening on the expected port. If you don't see this, review the above instructions and configure appropriately.

6/7/2011 4:50:21 PM	Server	Server is listening on ['any' <ipv4> 1433].
6/7/2011 4:50:21 PM	Server	Logging SQL Server messages in file
6/7/2011 4:50:21 PM	Server	Authentication mode is MIXED.

- Install the Java JDK Java SE 6 Update 25:
<http://www.oracle.com/technetwork/java/javase/downloads/index.html>
- Install Tomcat v6 application server: <http://tomcat.apache.org/download-60.cgi>
 - Be sure to stop the main web site service – otherwise it will conflict with the instance we will be running in Eclipse.
- Extract the WebClientMobileWorkshop.zip to c:\WebClientMobileWorkshop
- Restore database WXPCOURSE60 from the Database subdirectory to your SQL Server environment. Create an ODBC connection to the database called WXPCOURSE60.



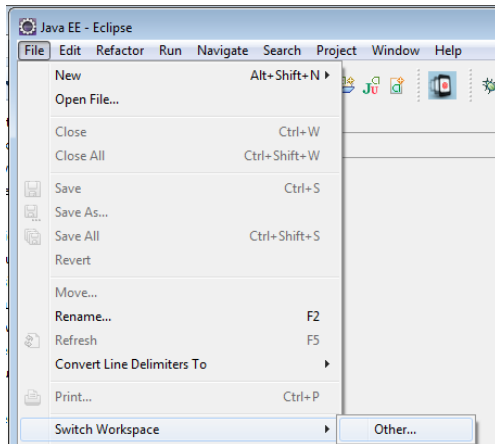
- Verify you can open the CA Plex model WXPcourse61.mdl located in C:\WebClientMobileWorkshop\wxpcourse60
- Verify you can open Eclipse.exe from C:\WebClientMobileWorkshop\eclipse. It is convenient to add a shortcut to eclipse from your start menu or desktop.

Exercise 1 – Orientation and Hello World

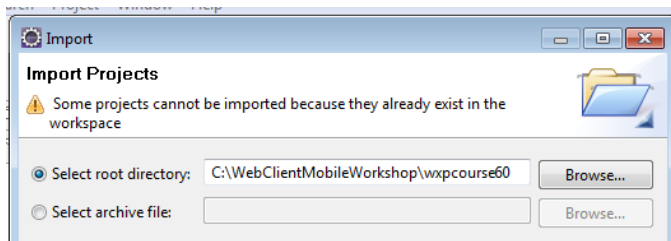
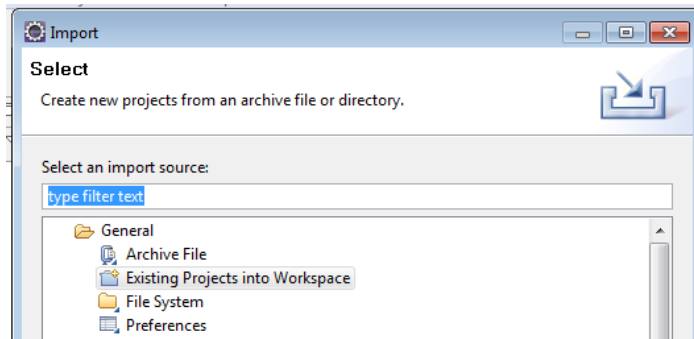
Configure Eclipse

Open Eclipse, you should see a welcome screen

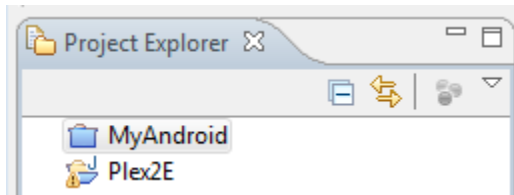
Next, switch your workspace to C:\WebClientMobileWorkshop\wxpcourse60 using the File / Switch Workspace menu option



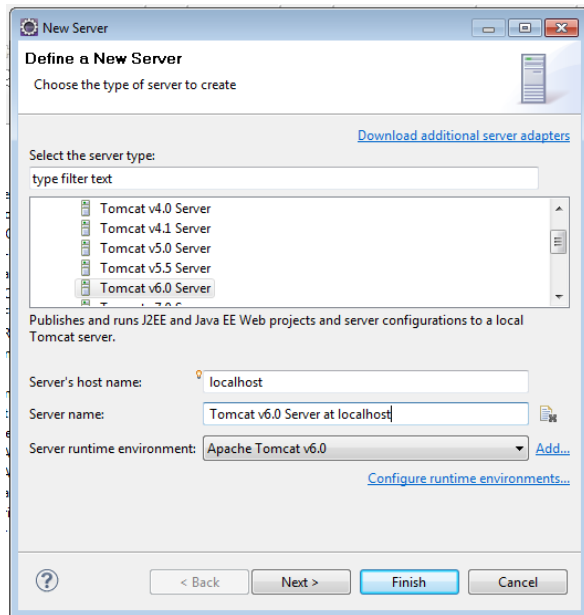
Import the projects located in the workspace



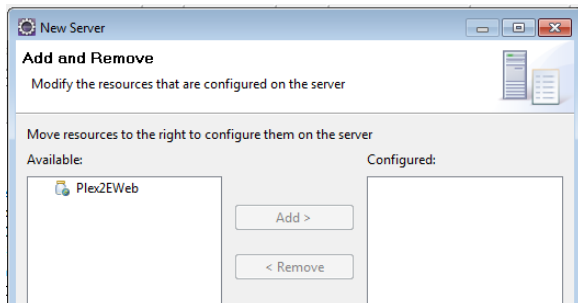
Click on MyAndroid project and close it. We will configure this later.



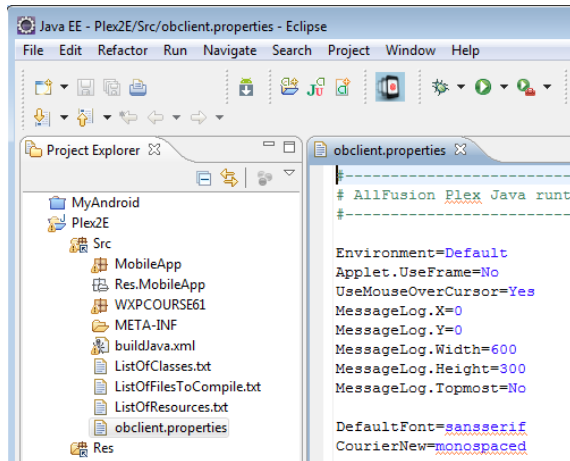
Go to the Servers tab and add an Apache Tomcat 6.0 Server.



Hit next and add the Plex2EWeb project to the server



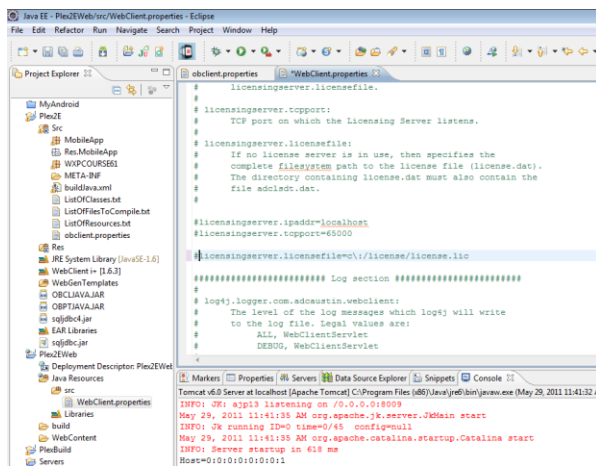
Navigate to the Plex2E project and verify / change the SQL Server connection entries in obclient.properties



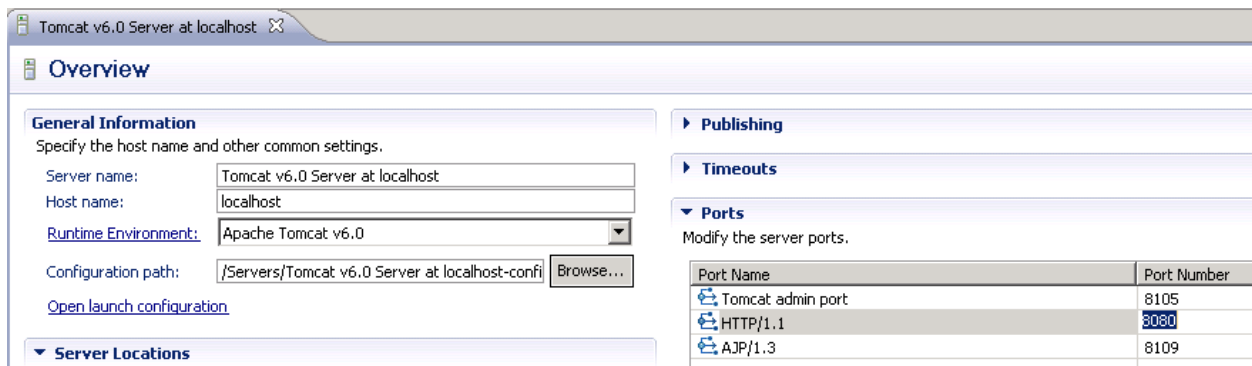
The entries should look similar to this, but the Port, User, and Password will possibly be different

```
Environment.Default.Driver=com.microsoft.sqlserver.jdbc.SQLServerDriver
Environment.Default.DataSource=jdbc:sqlserver://localhost:1433;instanceName=SQLEXPRESS;integratedSecurity=false;databaseName=WXPCOURSE60
Environment.Default.User=sa
Environment.Default.Password=sa
```

Navigate to the Plex2EWeb project and comment out the licensing server entry in WebClient.properties



Double Click on the Tomcat server and ensure the HTTP port is set to 8080.



Restart the Tomcat server.

Note – to run the application the Tomcat Server should be in status **Started, Synchronized**. If it does not say that, restart the server to republish. In the case of erratic behavior due to incomplete publishing, stop the Tomcat server, right click, and perform a clean operation. This will re-sync the environment to your application.

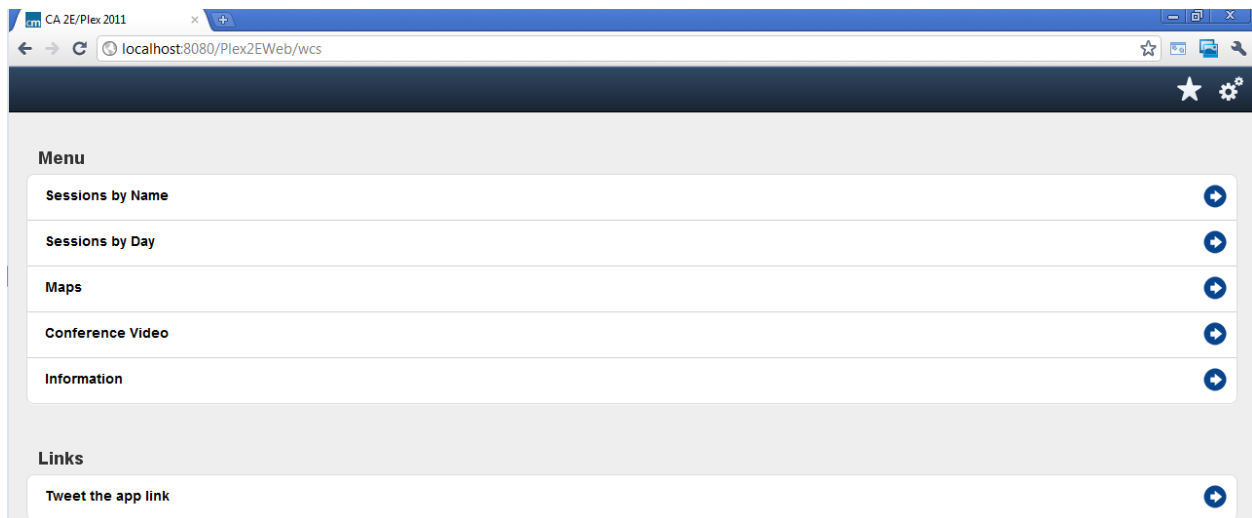
Note: if you get a port conflict message – ensure that other instances of Tomcat or other web servers are stopped. You can check Tomcat by the “Configure Tomcat” program shortcut.

Run the default Application

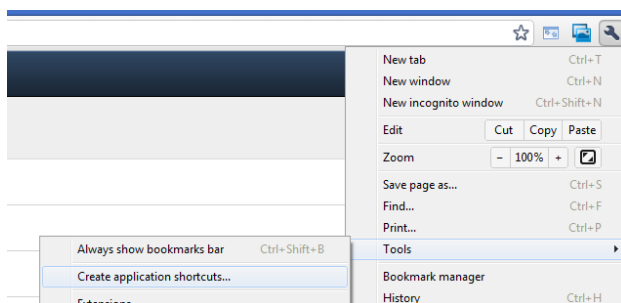
From a Google Chrome or Apple Safari Brower, open this URL:

<http://localhost:8080/Plex2EWeb/wcs>

Note that this page will not function in Internet Explorer



To create a shortcut to the urn, click on the wrench, go to tools and then “Create application shortcuts...”. From there you can create an icon to launch the app directly.



Troubleshooting

If you don't get the above web page looks like this – verify:

- url is typed in correctly – url is case sensitive
- Tomcat is started – look at the servers tab in Eclipse and start the Tomcat service if necessary
- Check the most recent error log located at c:\logs\webclient*.log.
 - See the SQL Server connection from Eclipse section in the appendix. Verify you can access SQL Server from a java application. Check the entries in obrun.properties
 - Check the licensing entries in webclient.properties
- Contact CM First support at webclientiplus.com

Inspect CA Plex Model

Open the CA Plex model WXPcourse61.mdl located in director C:\WebClientMobileWorkshop\wxpcourse60

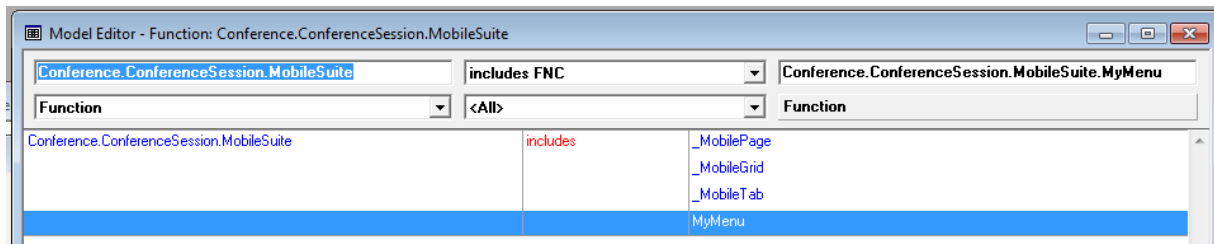
First, inspect Entity ConferenceSession and the MobileSuite function scoped to it. This will be the focus of our exercises – developing a conference agenda tool for our CA 2E/Plex conference.

Look at two abstract functions - _MobilePage and _MobileGrid. These are simple building blocks for a mobile application. Verify the inheritance is to standard CA patterns and to standard WebClient. You would create your own mobile standards layer in a similar fashion.

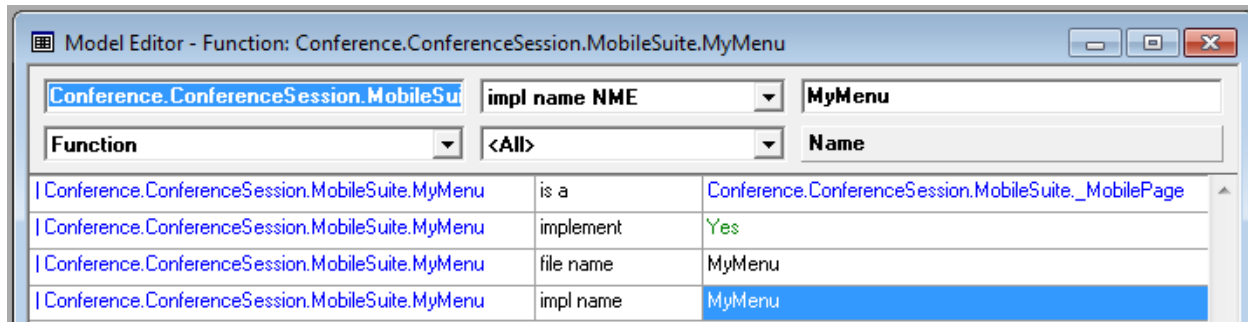
Also look at the control name properties for the buttons, grid, and search field. This technique will be used throughout the workshop to direct the look of the mobile presentation.

Create a Hello World initial menu

Create a new function called “MyMenu” that is scoped to ConferenceSession.MobileSuite



Add the following triples



Go to the panel designer, and add a button called “Hello World”

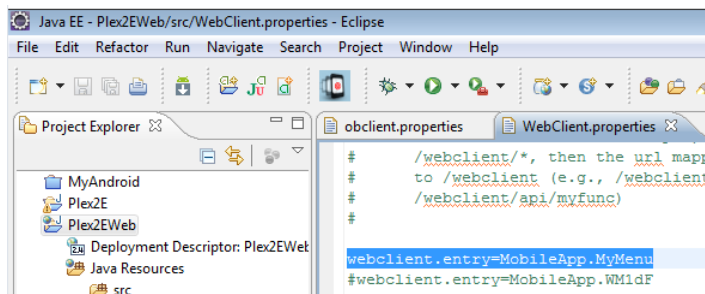
In the button control name property add the following text

HelloButton:MainArea:fieldSet=Menu

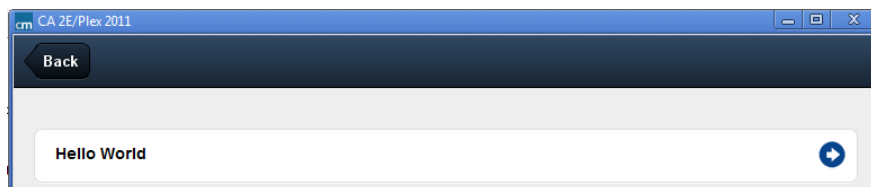
Generate the function. Note – you may have to reset the name allocator file in your generate and build options.

Go to eclipse and verify it automatically builds a mobile web page. **If it does not build automatically, highlight the project and hit refresh to build the web pages.**

Change the WebClient.properties file entry function to MyMenu



Restart Tomcat and verify the following result



Congratulations – you have built your first mobile-optimized application!

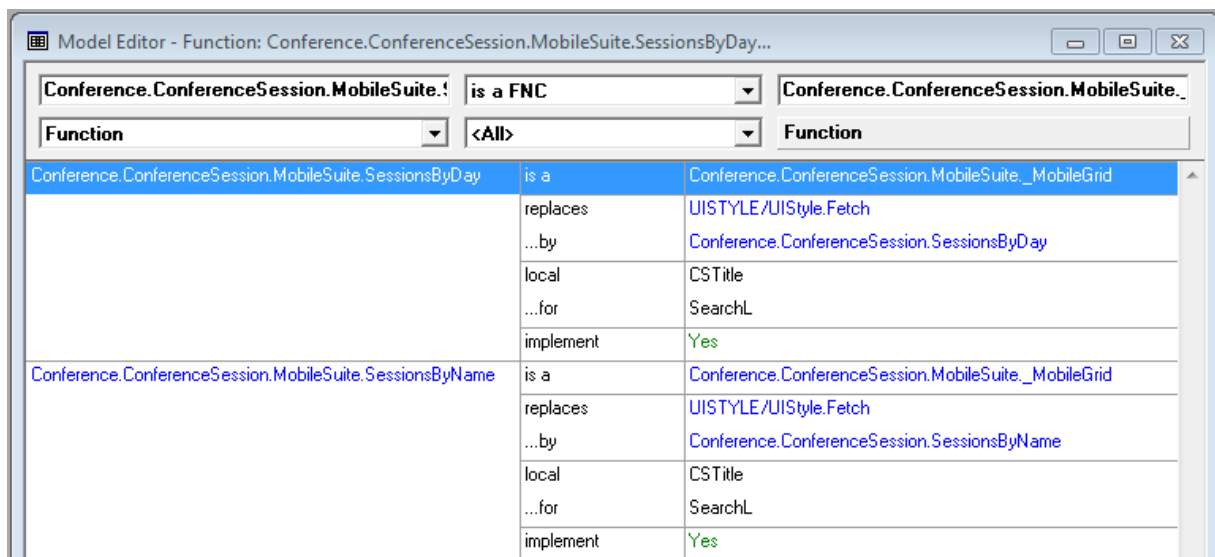
Exercise 2 – Create a menu and a session grid

Next we will create two searchable grids over our session table.

First create two functions scoped to MobileSuite

- SessionsByDay
- SessionsByName

Enter the following triples to inherit from our pattern functions



Function		Function
Conference.ConferenceSession.MobileSuite.SessionsByDay	is a	Conference.ConferenceSession.MobileSuite._MobileGrid
	replaces	UISTYLE/UIStyle.Fetch
	...by	Conference.ConferenceSession.SessionsByDay
	local	CSTitle
	...for	SearchL
	implement	Yes
Conference.ConferenceSession.MobileSuite.SessionsByName	is a	Conference.ConferenceSession.MobileSuite._MobileGrid
	replaces	UISTYLE/UIStyle.Fetch
	...by	Conference.ConferenceSession.SessionsByName
	local	CSTitle
	...for	SearchL
	implement	Yes

In the action diagram, put in the following code to enable searching

```

Pre Point Start reload Grid
Set GridL<EventFiredFlag> = <EventFiredFlag.*False>
Set SearchL = GridButtonP

Pre Point End reload Grid
Set GridButtonP = SearchL
Put
    
```

Next, go into the Panel Designer and hide all fields on GridP except CSTitle for the Sessions by Name function and all fields except CStime and CSTitle on the Sessions by Date function

Now go into your menu function Panel Designer

- Remove the Hello World Button

- Add two buttons called Sessions by Name and Sessions by Date
- Create / map two events to these buttons

Go to the Action Diagrammer and add calls to your new grid functions

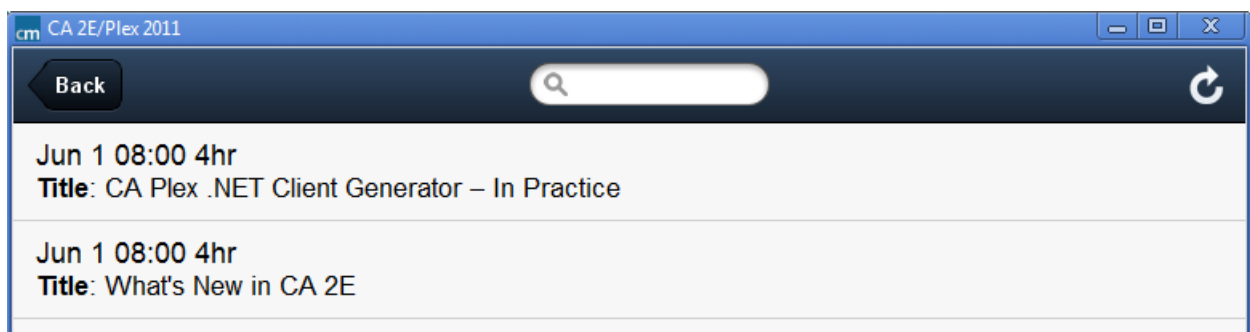
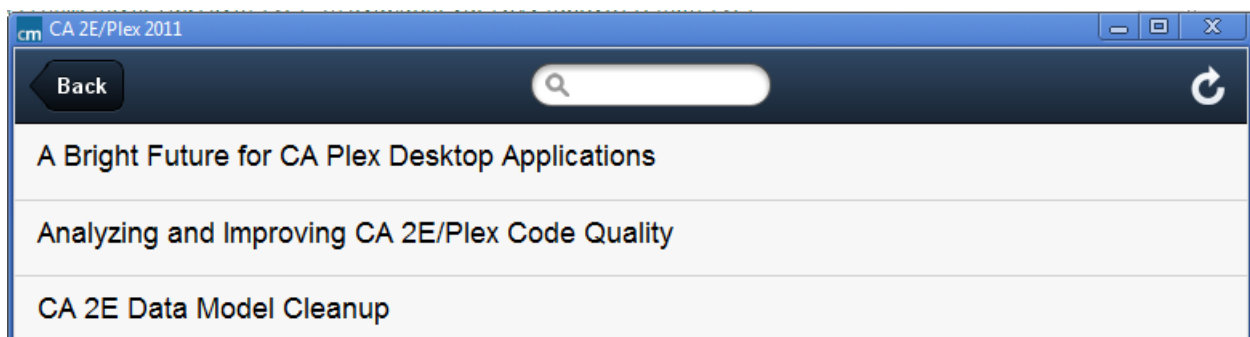
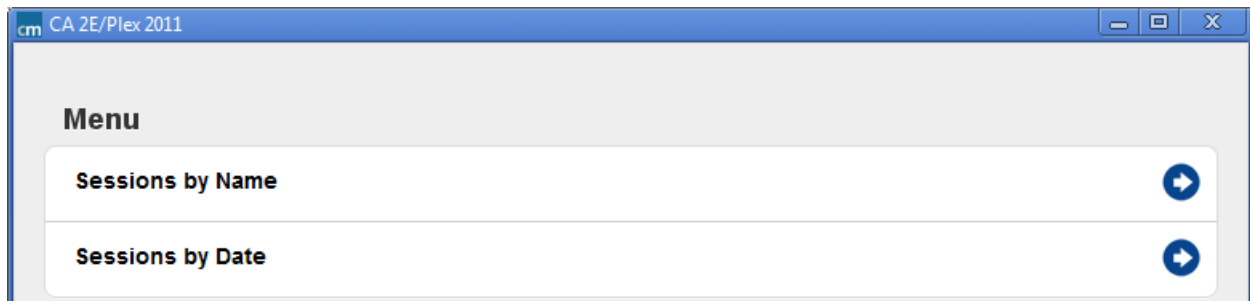
```

Event Event: SessionsByDate
Call Conference.ConferenceSession.MobileSuite.SessionsByDay

Event Event: SessionsByName
Call Conference.ConferenceSession.MobileSuite.SessionsByName
    
```

Generate the menu and 2 grid functions

Run your application shortcut. You will end with screens that look like this:



Next, lets experiment with grouping.

You can create groups by setting control name directives. The group column is the first visible field on the grid.

In the case of Session By Name, please do the following

Change the GridP control name property as follows

Grid1P:FullscreenArea:grouped=true:indexBar=true

Add a field AlphaSort as the first field in the grid. Make sure it is visible

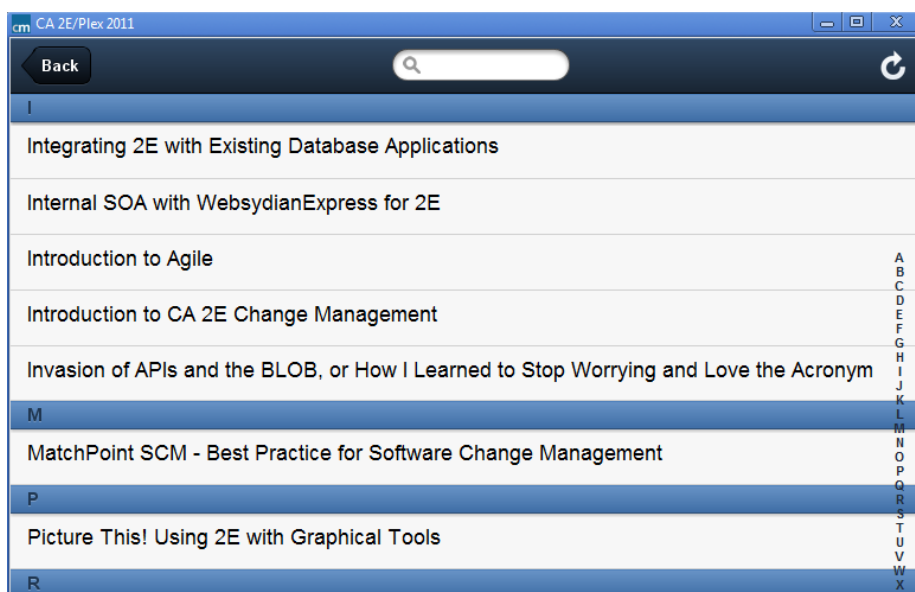
Add the following action diagram code to populate AlphaSort with the first character of the title

```
Pre Point Process Grid row after add
Cast GridP<AlphaSort>, GridP<CSTitle>
Put GridP
```

In the case of Session by Date, change the control name to this:

Grid1P:FullscreenArea:grouped=true:indexBar=false

Generate and you will end up with grouped grids. In the case of Session By Name, you will also see an index bar to the right that lets you quickly select the first letter of the session you want to see.

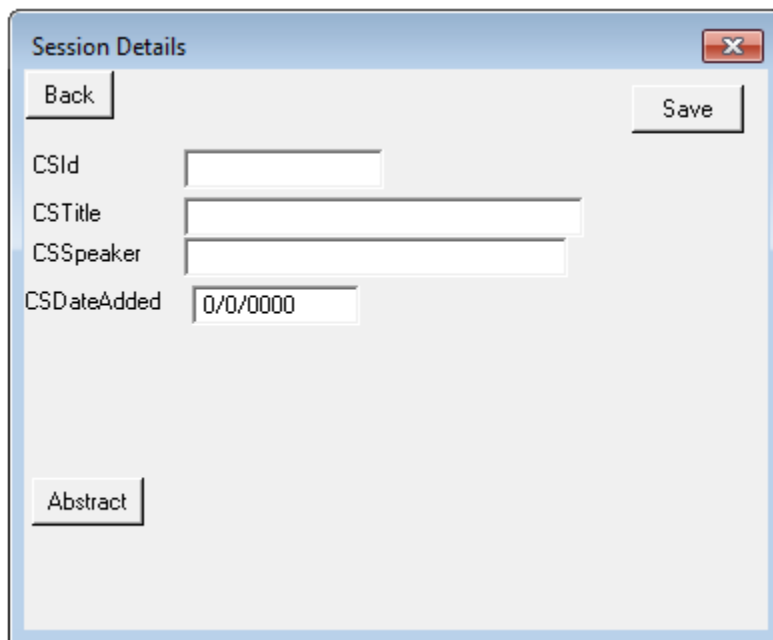


Exercise 3 – Create detail pages

First, lets create a new page function

Conference.ConferenceSession.MobileSuite.ConferenceDetails	is a	Conference.ConferenceSession.MobileSuite._MobilePage
	calls	UISTYLE/ShowDetail Conference.ConferenceSession.MobileSuite.ConferenceAbstract Conference.ConferenceSession.MobileSuite.ConferenceMedia Conference.ConferenceSession.MobileSuite.ConferenceMoreInfo Conference.ConferenceSession.MobileSuite.GetGlobal Conference.ConferenceAttendeeAgenda.Update.InsertRow Conference.ConferenceSession.Update.UpdateRow
	replaces	UISTYLE/UIStyle.Fetch
	...by	Conference.ConferenceSession.Fetch
	input	CSId
	...for	OBJECTS/Input
	file name	WM3bF
	implement	Yes
	impl name	WM3bF

Next, create a panel design that looks something like this. Hide all fields except what you see here.



The form is titled "Session Details" and has a close button (X) in the top right corner. It contains the following elements:

- A "Back" button in the top left corner.
- A "Save" button in the top right corner.
- Four input fields:
 - CSId: A single-line text input field.
 - CSTitle: A multi-line text input field.
 - CSSpeaker: A single-line text input field.
 - CSDateAdded: A date input field showing "0/0/0000".
- An "Abstract" button at the bottom left.

Next, edit the control name properties as follows. **Important note – field control names go in the Edit component level, not the field level.**

Save Button: SaveButton:ToolbarArea:iconCls=action:align=left:toolbarNum=1

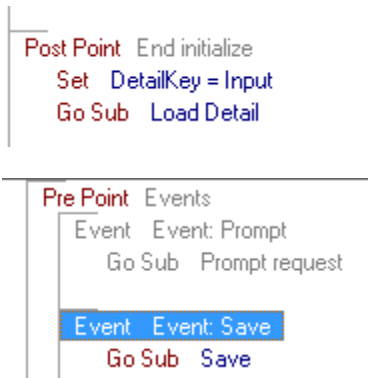
Text fields, use the following pattern changing id: Id:MainArea:label=ID

Date field: DateAdded:MainArea:label=Date:template=DatePicker

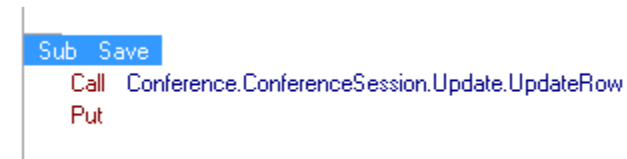
Note- You can also attach a fieldSet at the end: fieldSet=Basic Info, fieldSet=Advanced Info

AbstractButton: AbstractButton:MainArea:fieldSet=More

Go to the action diagram and add basic statements



Note – be sure to put a Get statement in before the “Call” below.

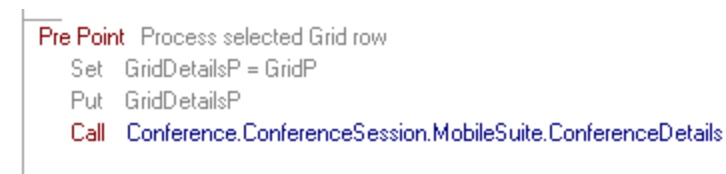


Function: Conference.ConferenceSession.Update.UpdateRow

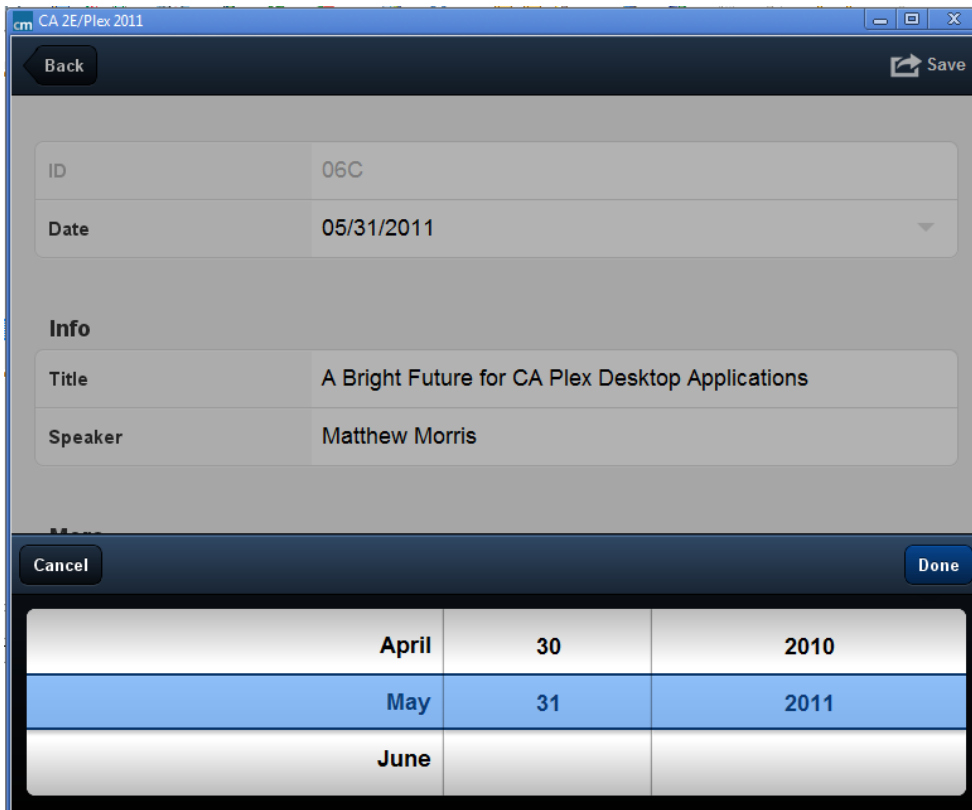
Type	To	From
D	UpdateData<CSSTitle>	[DetailP<CSSTitle>]
D	UpdateData<CSShortTitle>	[DetailP<CSShortTitle>]
D	UpdateData<CSAbstract>	[DetailP<CSAbstract>]
D	UpdateData<CSTrack>	[DetailP<CSTrack>]
D	UpdateData<CSSpeaker>	[DetailP<CSSpeaker>]
D	UpdateData<CSSpeakerCompany>	[DetailP<CSSpeakerCompany>]
D	UpdateData<CSPresentationURL>	[DetailP<CSPresentationURL>]
D	UpdateData<CSVideoURL>	[DetailP<CSVideoURL>]
D	UpdateData<CSDay>	[DetailP<CSDay>]
D	UpdateData<CSTime>	[DetailP<CSTime>]
D	UpdateData<CSType>	[DetailP<CSType>]
D	UpdateData<CSDateAdded>	[DetailP<CSDateAdded>]
D	UpdateKey<CSId>	[FetchData<CSId>]

- UpdateData
 - DetailP
 - FetchData
- UpdateKey
 - FetchData

Go to the _MobileGrid function and add/change a line to call the detail function



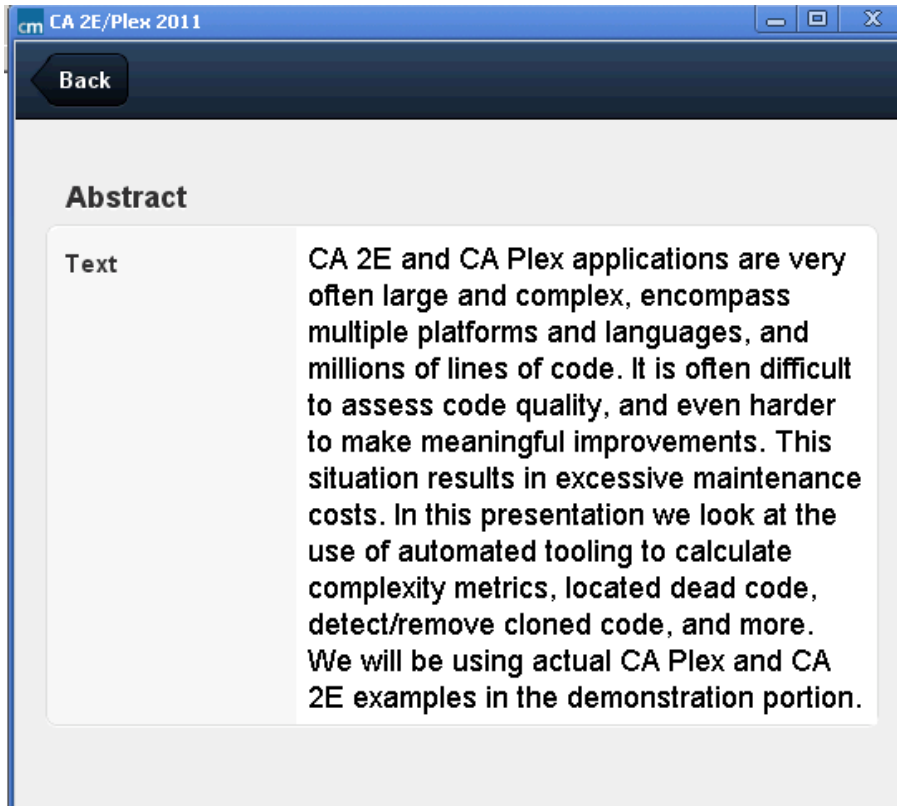
Generate and run



ID	06C
Date	05/31/2011
Info	
Title	A Bright Future for CA Plex Desktop Applications
Speaker	Matthew Morris

Cancel			Done
April	30	2010	
May	31	2011	
June			

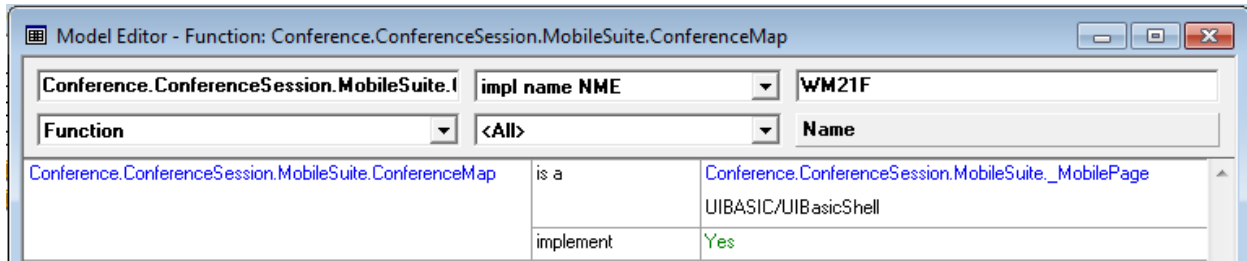
Extra Credit – Implement an Abstract viewing function and tie it to the Abstract disclosure button. Use the multiline property on the edit control.



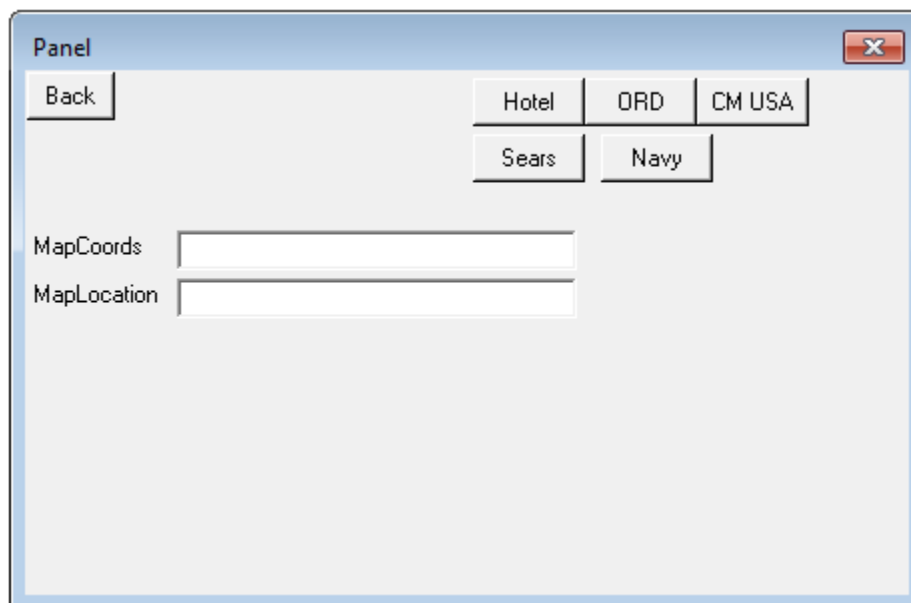
Exercise 4 – Maps and location services

In this exercise we are going to create a simple map with geo markers.

First, create a function ConferenceMap to contain the map.



Second, modify the panel design to look something like this.



You will place two fields on the design to contain longitude and latitude coordinates in the form xx.xxxxxx, yy.yyyyyy. You can use any text field or the suggested fields.

In the control name of fields use these strings:

- MapCoords:FullscreenArea:template=WebMap
- MapLocation:FullscreenArea:template=WebLocation

You should also create some buttons to change the location of the map viewport. You can use your own coordinates or here are some coordinates from the local area:

- Hotel: 42.030044, -88.032722
- CM First Austin: 30.353611,-97.748829
- O'Hare International (ORD): 41.9816486, -87.9066714
- Sears Tower: 41.879595,-87.63588
- Navy Pier: 41.890266,-87.610345

Your button control names will look something like this:

- HotelBtn:ToolbarArea:toolbarNum=1:ui=round:align=right

Your code will look something like this.

```

Event Event: Hotel
Set DetailP<MapCoords> = <MapCoords.Conference>
Put

Event Event: ORD
Set DetailP<MapCoords> = <MapCoords.ORD>
Put
    
```

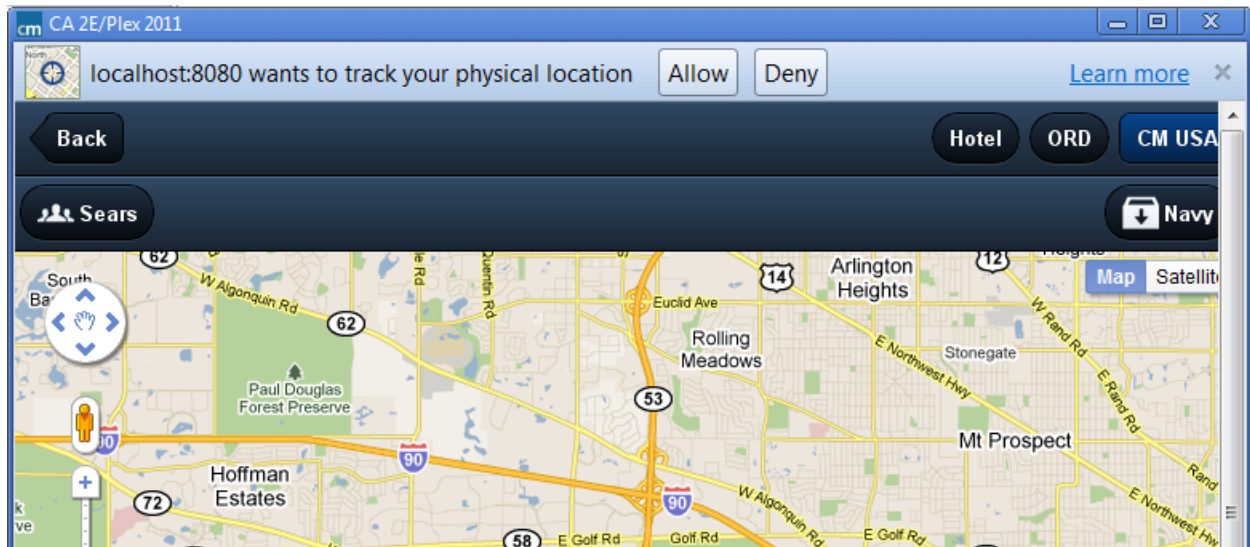
Take the opportunity to explore different button ui styles and icons, and multiple tool bars.

For example, dock a navy button to toolbar 2

- NavyBtn:ToolbarArea:toolbarNum=2:iconCls=organize:ui=round:align=right

Next add the Map to your menu.

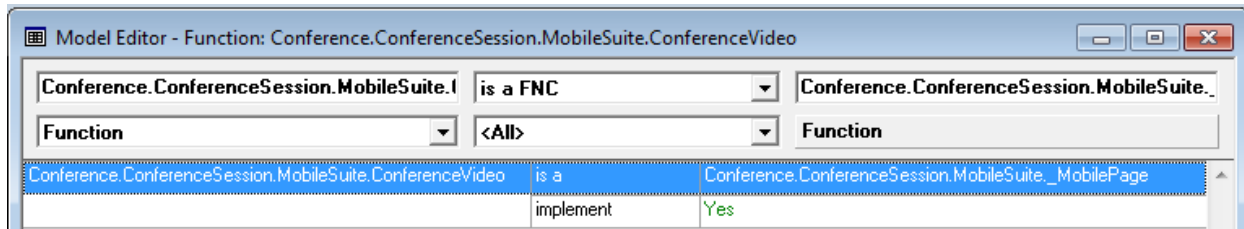
Your resulting function will look something like this:



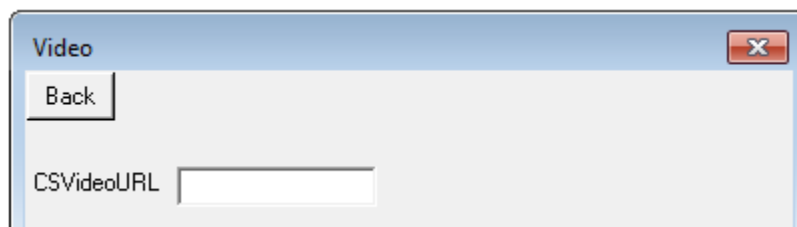
Exercise 5 – Videos and links

In this exercise we will use the Video template, and create links to external urls.

First, create a function ConferenceVideo to stream a video file.



Second, modify the panel design to look something like this

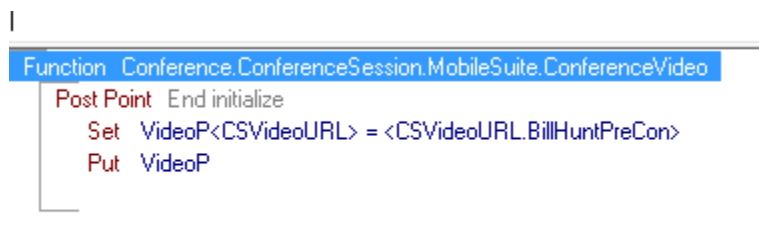


In the control name of field use the string:

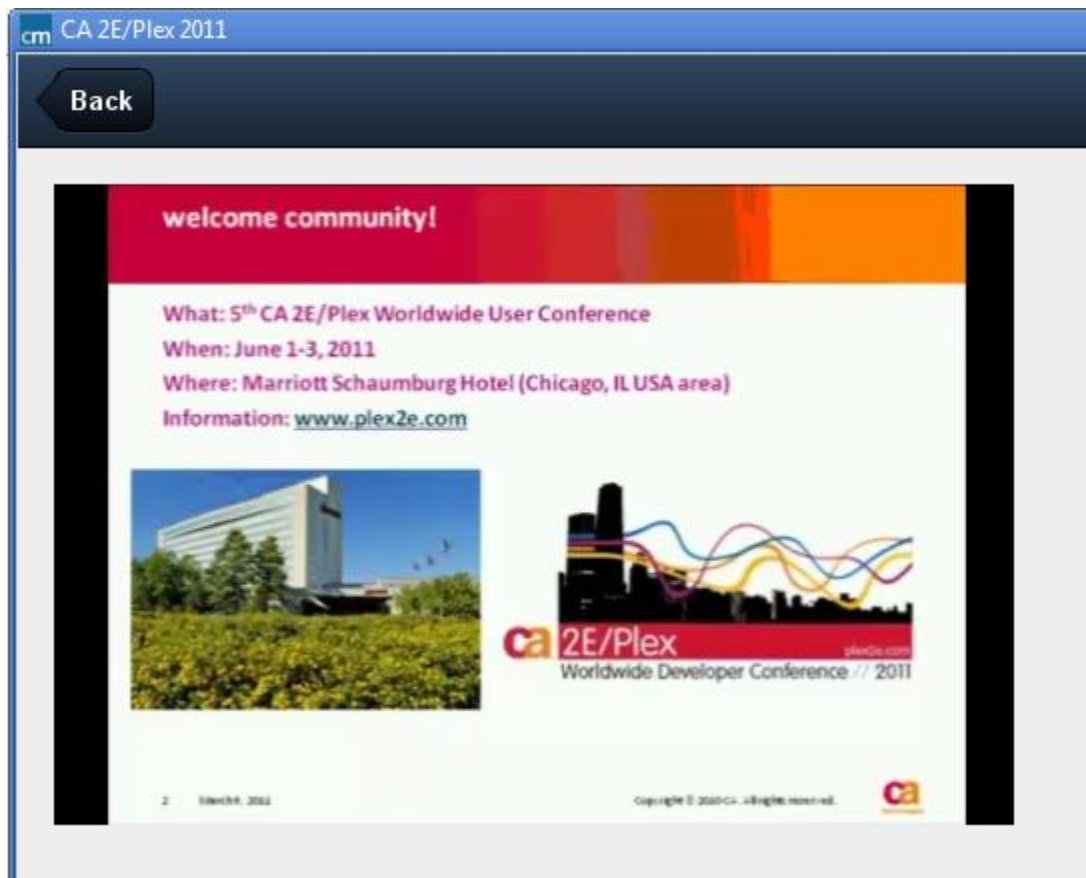
- Video:FullscreenArea:template=Video

In your action diagram, set the value of the video to an url. For example, you can use this url for Bill Hunt's preconference presentation:

- <http://mobileportal.cmfirsttech.com/Plex2EWeb/document/plex2e.mp4>

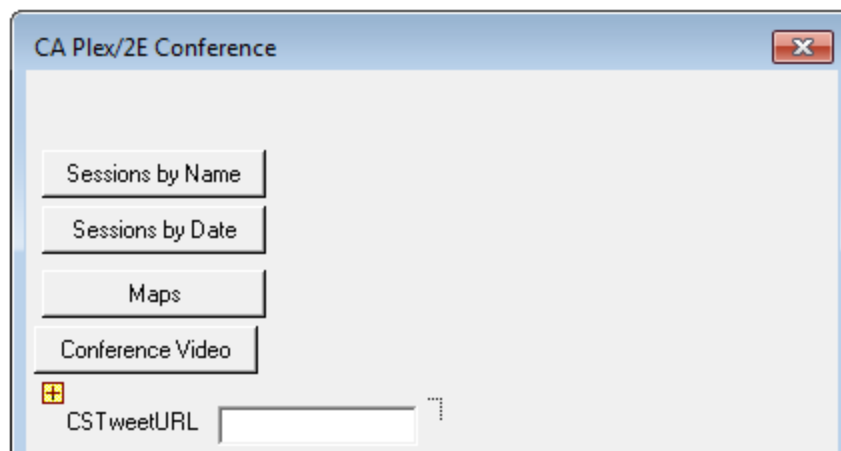


Add a menu option to your main menu, and try it out.



As part two of this exercise, let's create a web link to other types of web content. For example, on your main menu perhaps you would like a link to twitter.

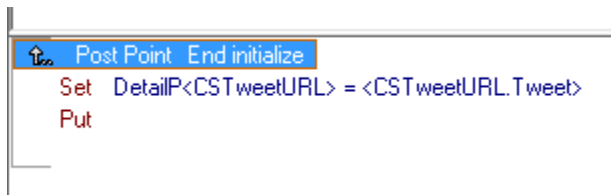
To do this, simply put a text field on your panel, such as your main menu.



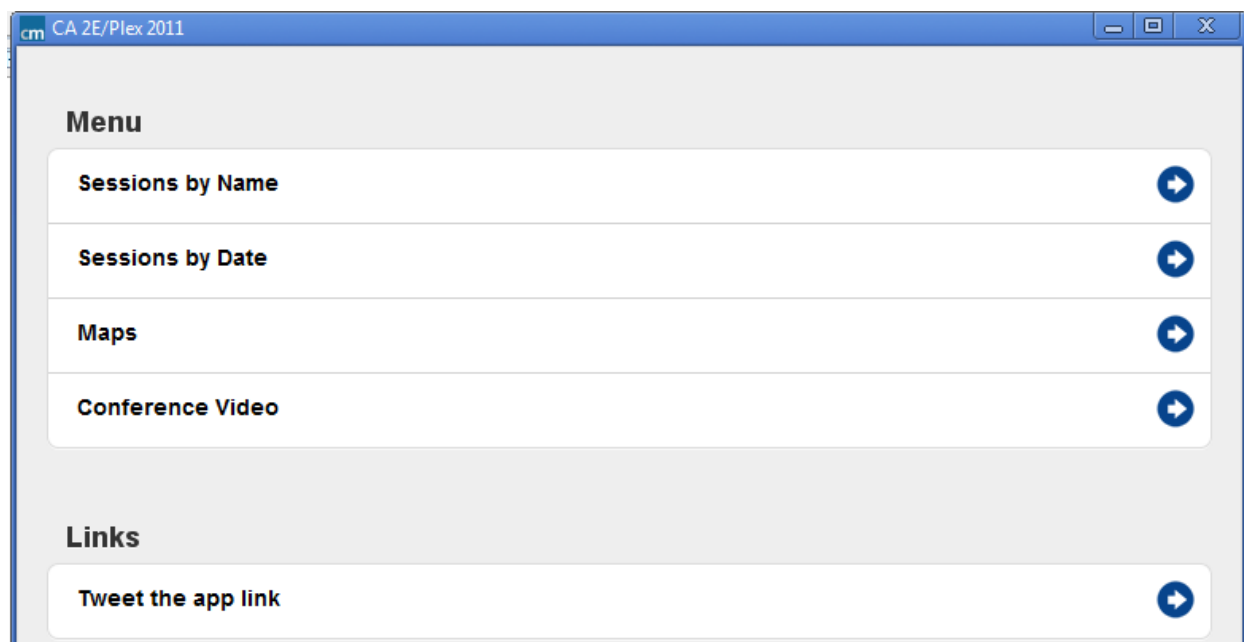
You can then tie field to the WebURL template. For example – to go to twitter, you could set your url field to <http://twitter.com/share> and put the following in the control name property:

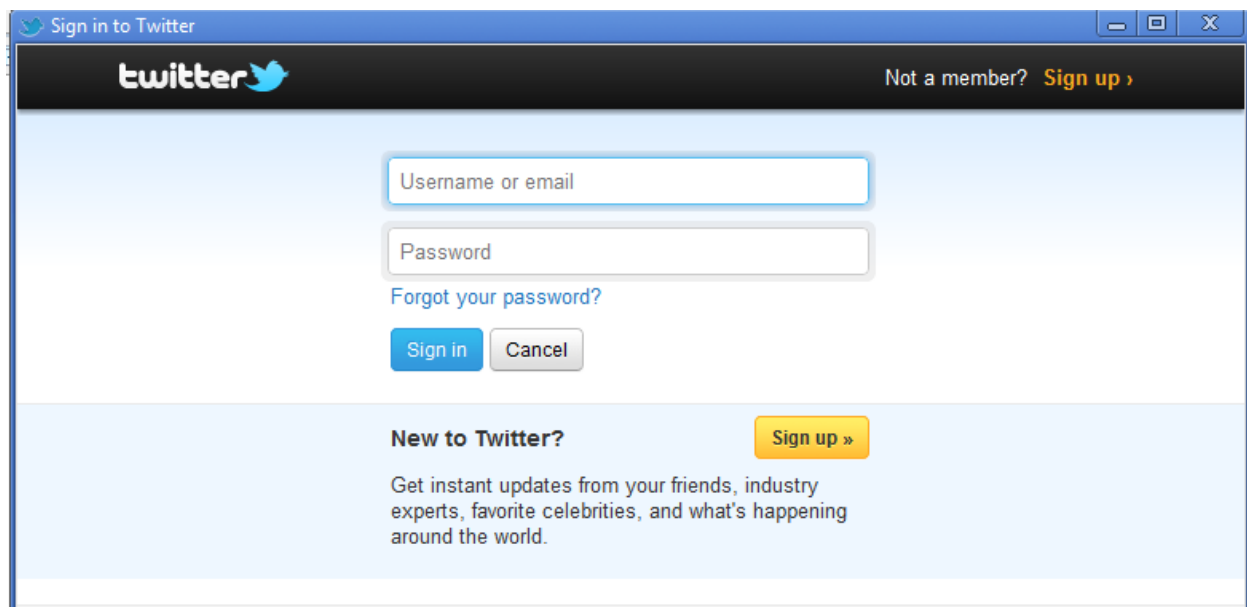
- Tweet:MainArea:template=WebURL:label=Tweet the app link:fieldSet=Links

Add some action diagram code and you are finished.



Generate and run





The image shows a screenshot of a web browser window titled "Sign in to Twitter". The browser's address bar and window controls are visible at the top. The Twitter sign-in page has a dark header with the Twitter logo on the left and the text "Not a member? [Sign up »](#)" on the right. The main content area is light blue and contains two input fields: "Username or email" and "Password". Below the password field is a link that says "Forgot your password?". At the bottom of the form are two buttons: "Sign in" (blue) and "Cancel" (grey). Below the form is a section titled "New to Twitter?" with a yellow "Sign up »" button. Below this button is a paragraph of text: "Get instant updates from your friends, industry experts, favorite celebrities, and what's happening around the world."

Sign in to Twitter

Not a member? [Sign up »](#)

Username or email

Password

[Forgot your password?](#)

[Sign in](#) [Cancel](#)

New to Twitter? [Sign up »](#)

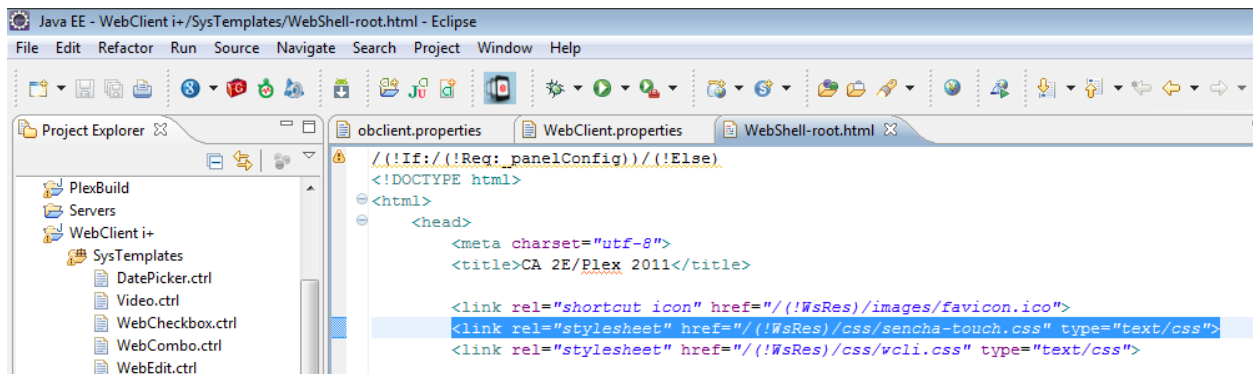
Get instant updates from your friends, industry experts, favorite celebrities, and what's happening around the world.

Exercise 6 – Appearance

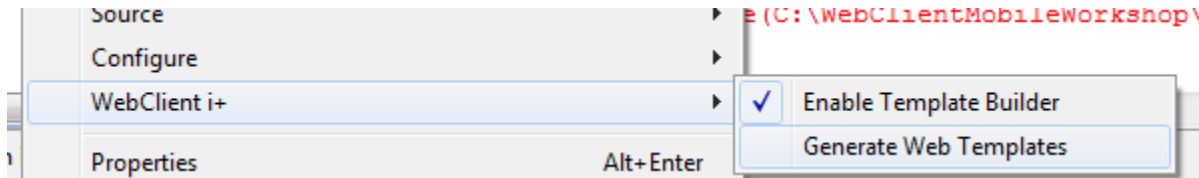
WebClient Mobile uses Sencha Touch / CSS3. With this you have the ability to make global changes to the themes.

First, try changing the css file to obtain different looks.

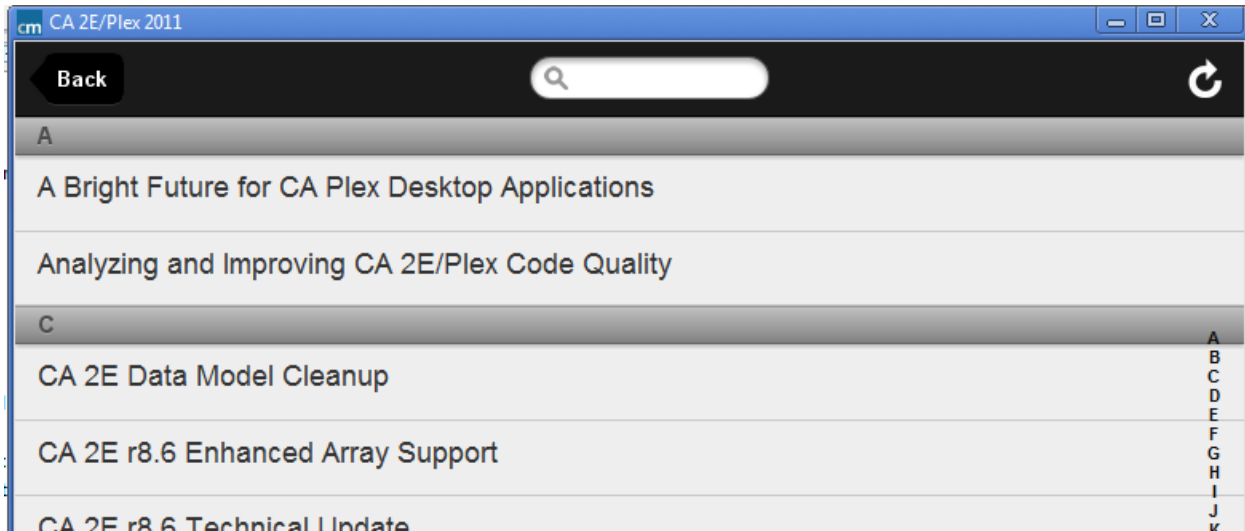
Go to the WebClient i+ project, and navigate to WebShell-root.html. Change the sencha-touch.css line to one of the others available (see the CSS folder)



To quickly regenerate the templates, right click on the Plex2E project and select the WebClient i+ option to generate the web templates. This will generate all of the WebClient templates in one operation.

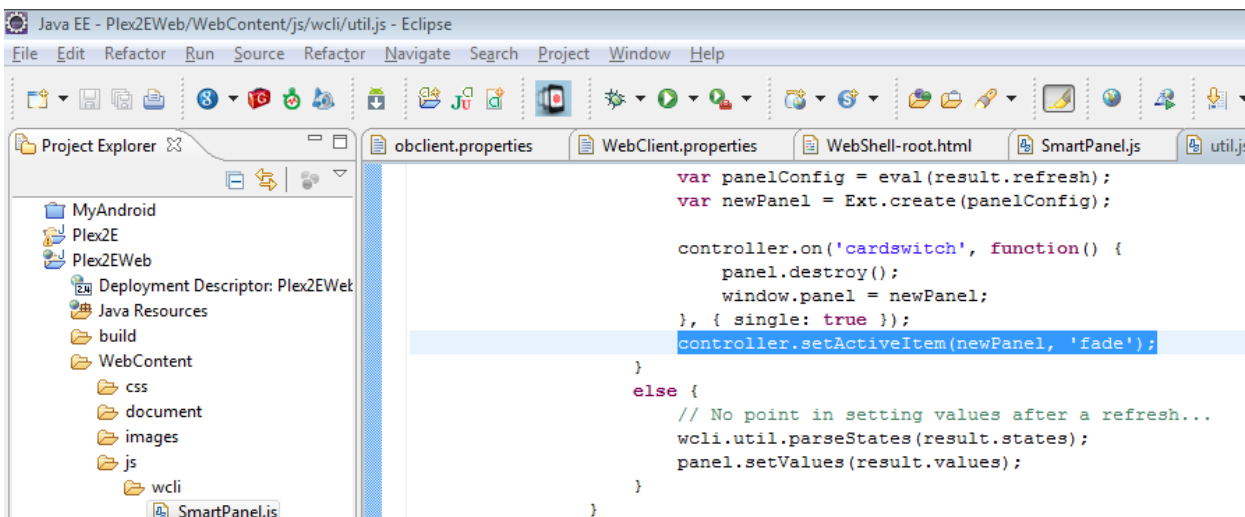


Here are the results of changing to android.css.



Next, try changing the screen transition animation. Note that this change only shows up on mobile devices.

Navigate to the Plex2EWeb Project, and then navigate from the WebContent folder to the wcli javascript. Change the line in the javascript to fade, cube, or slide.

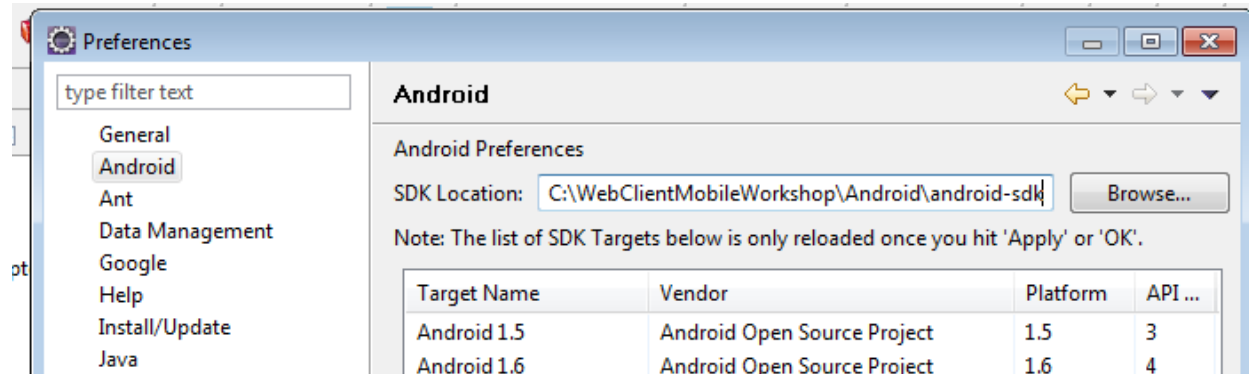


Save and republish the app.

Exercise 7 – Native App Deployment

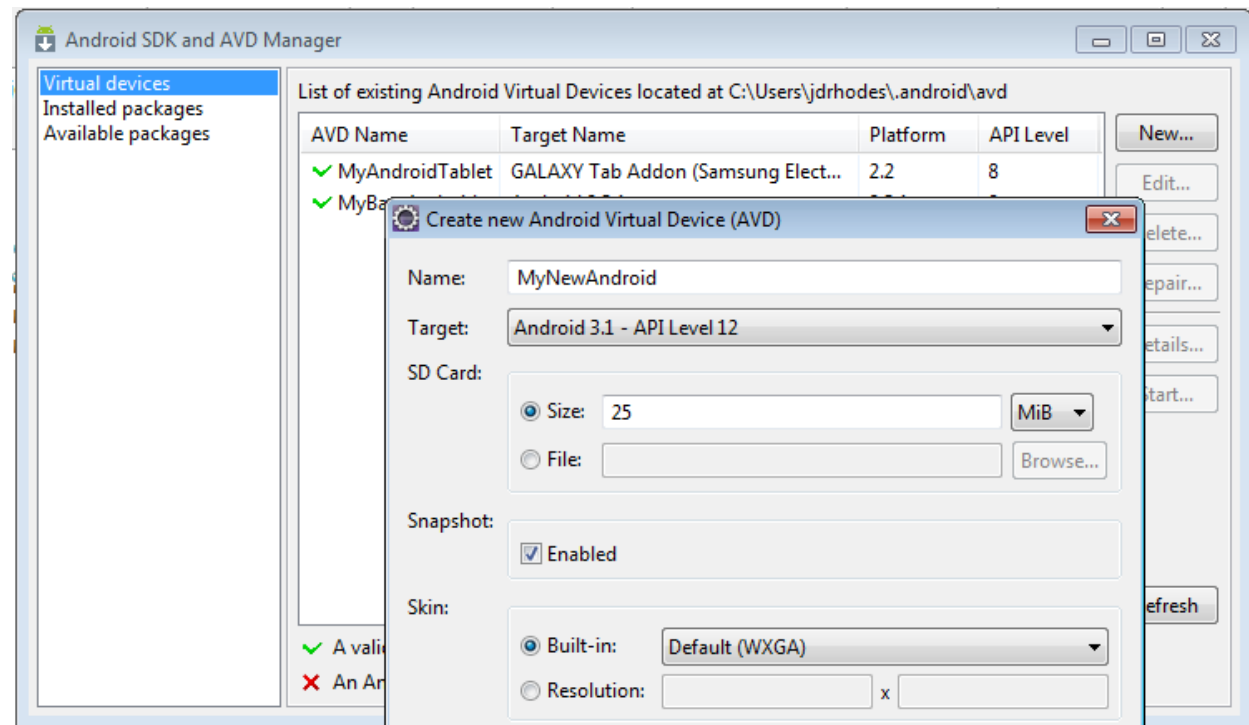
In this exercise we will create a native application of the type that can be deployed to the Android Market.

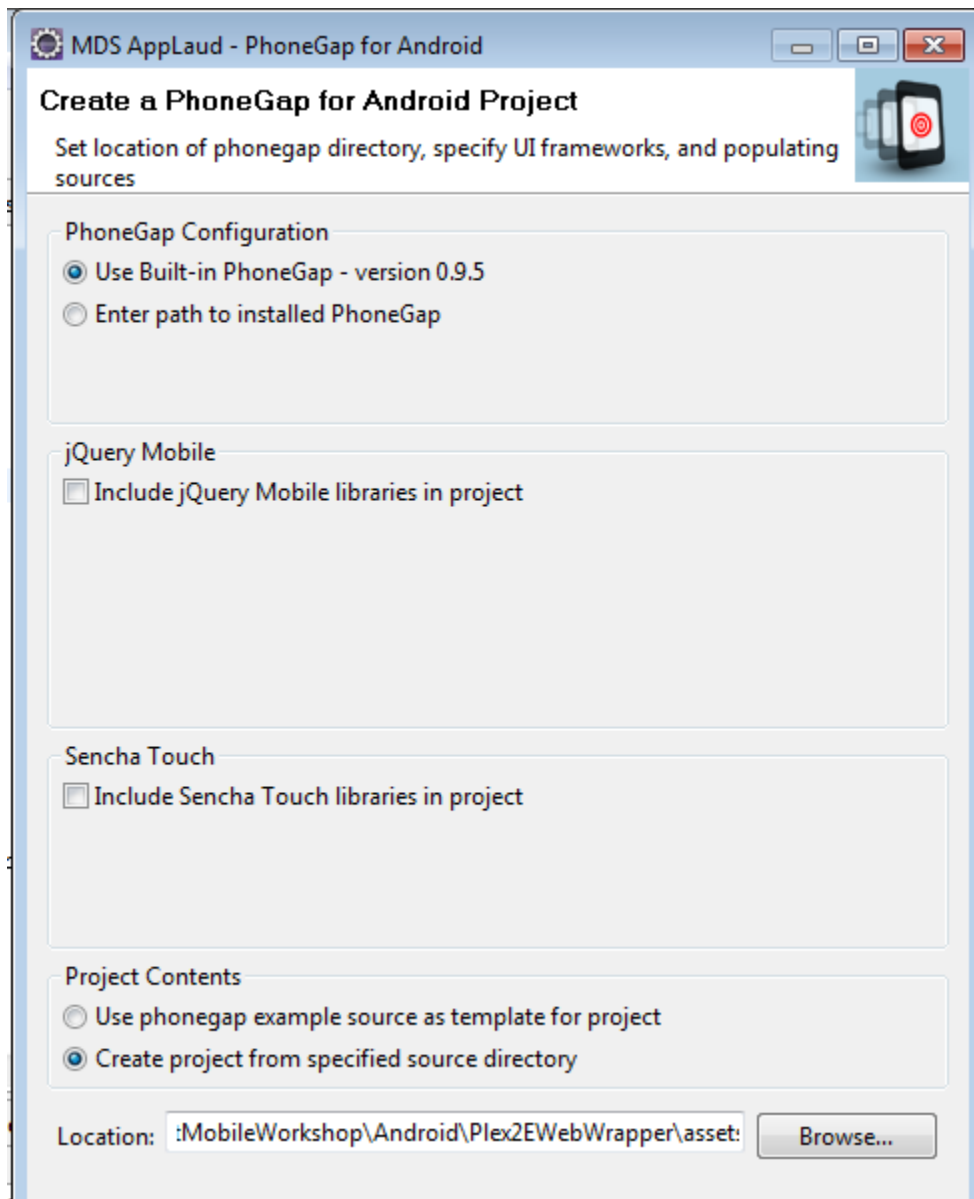
First, go to your Eclipse preferences under the window menu. Click on the Android preferences and change the path as shown:



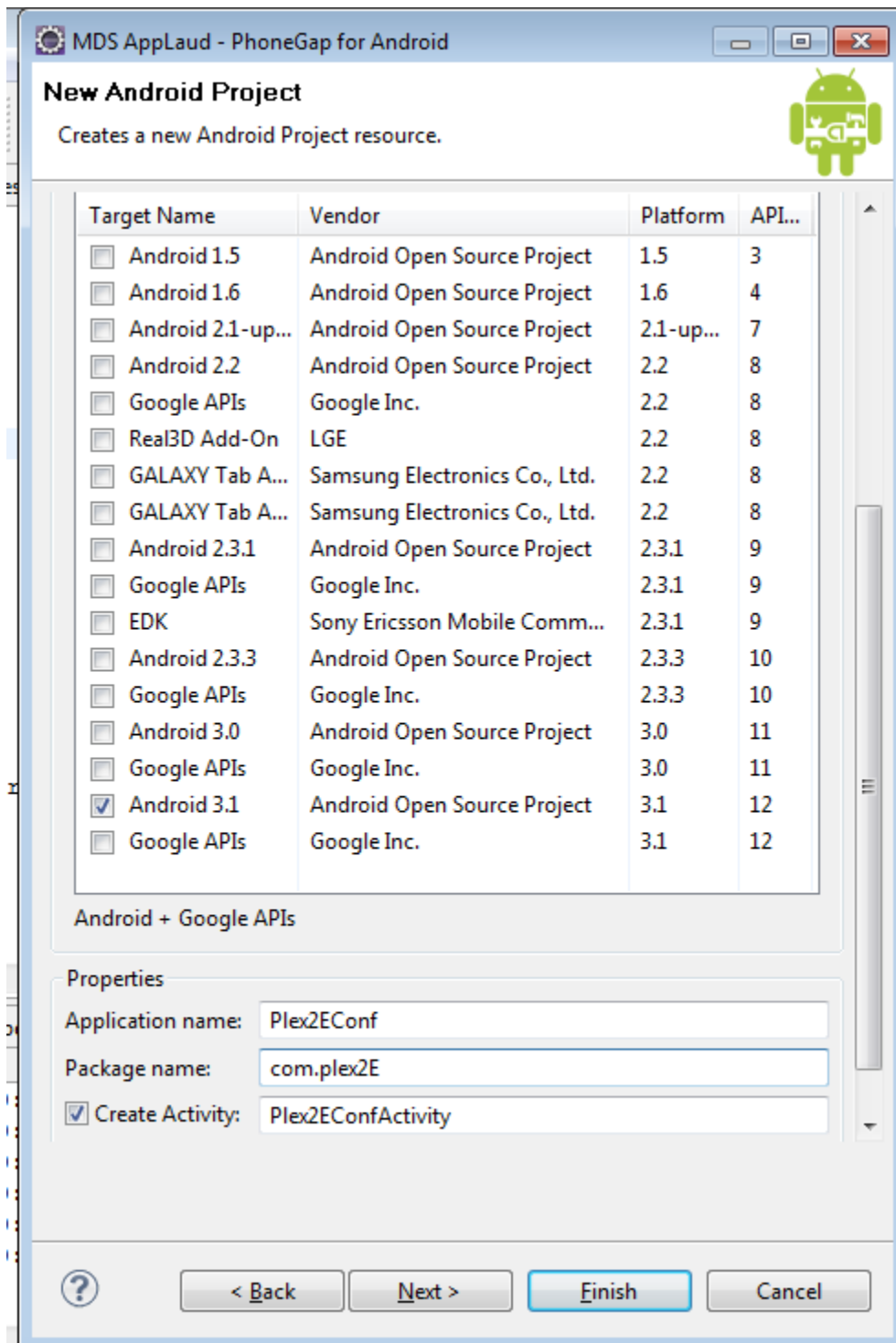
Click on the Android SDK and AVD Manager

Create a new Android simulation device

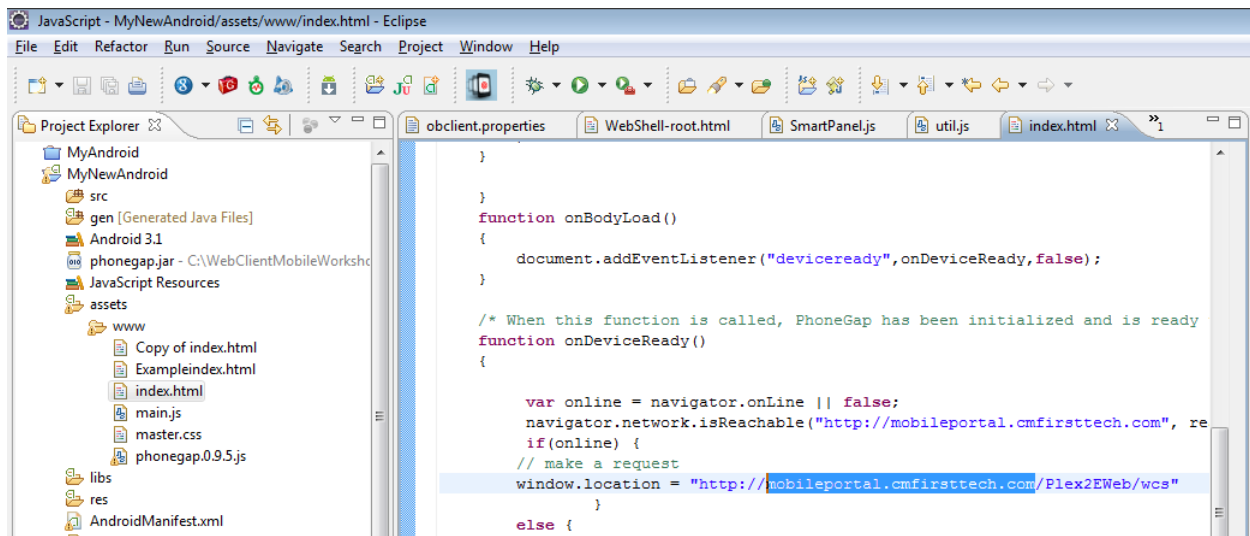




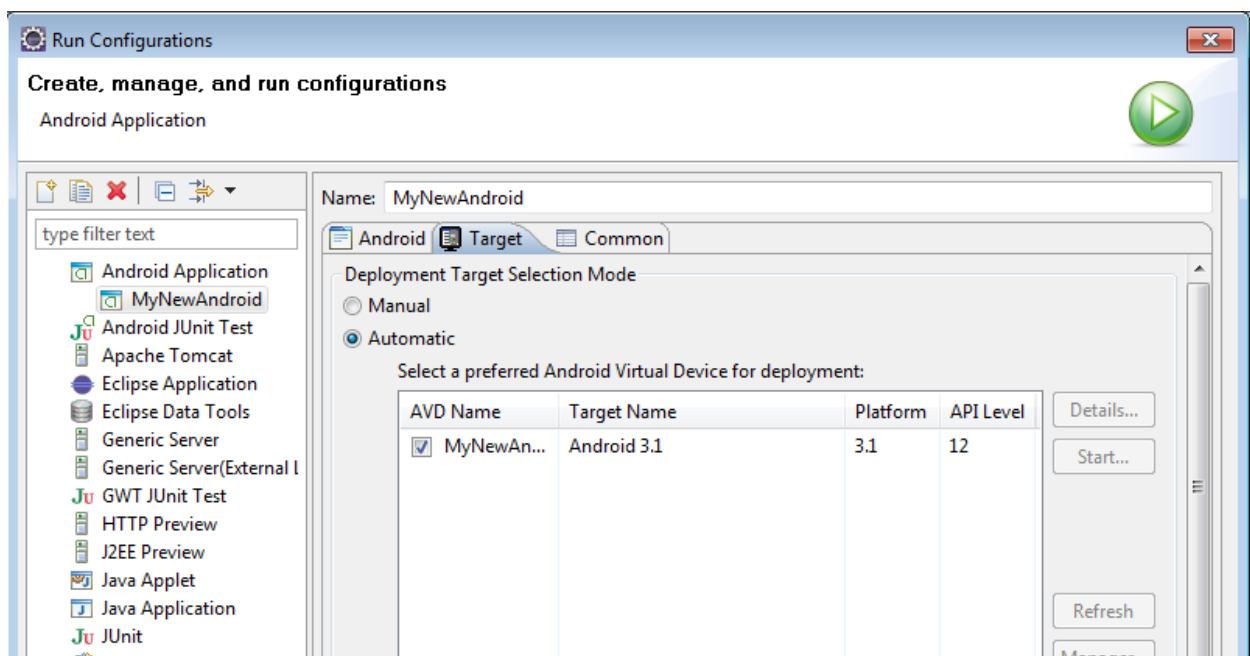
C:\WebClientMobileWorkshop\Android\Plex2EWebWrapper\assets\www



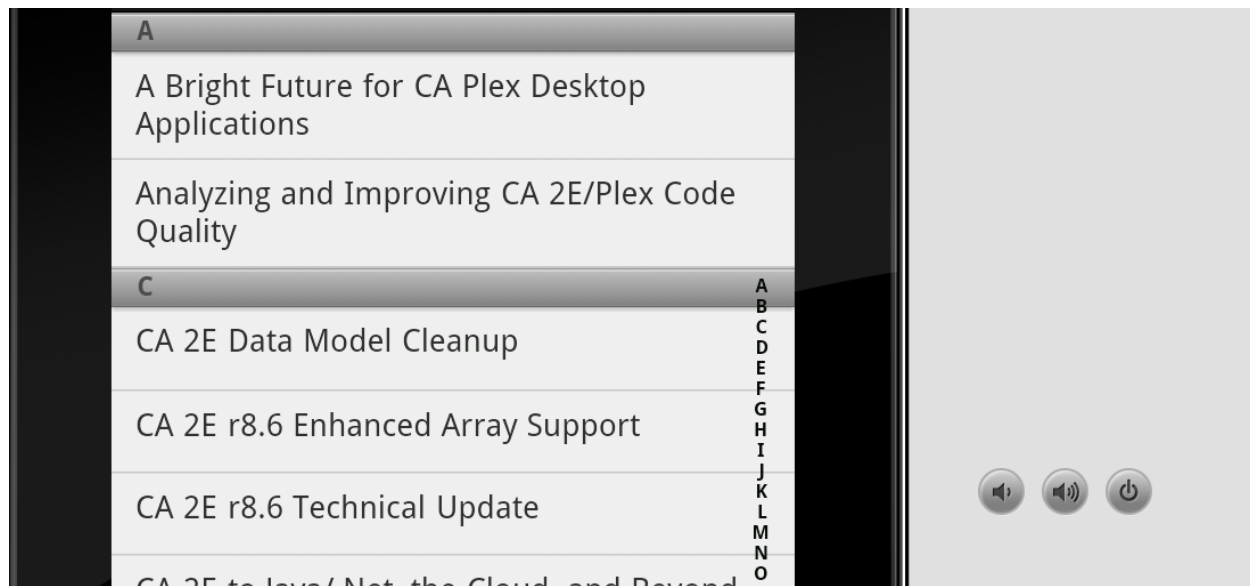
Navigate to the index.html file in your new project. Change to site to the url of your development site



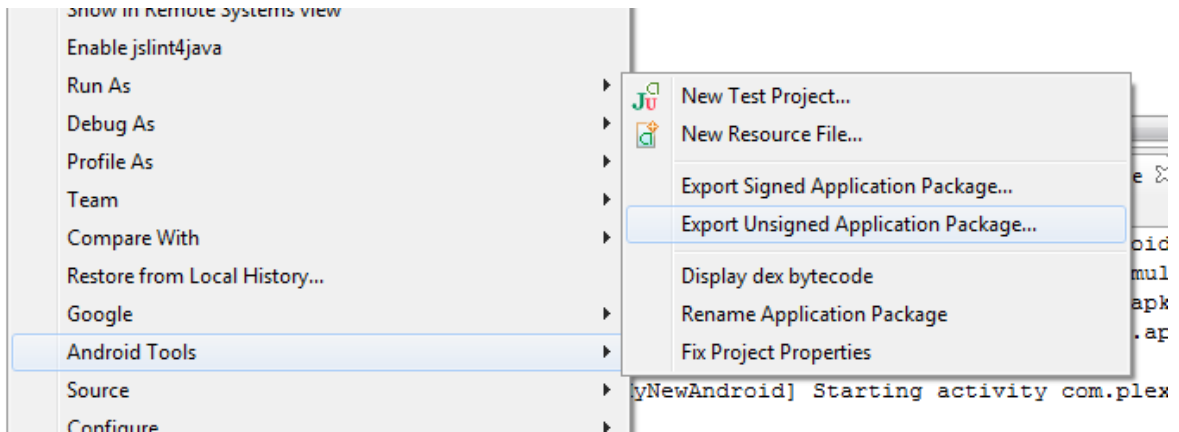
Go to run configurations and make sure your new device is selected under target



Run the application. Note that the emulator is slow. It is much faster to connect your own device for testing – beyond the scope of this course, but not difficult.



Export the APK file.



If you are planning to release commercial applications, you should sign up with google and get code signing credentials.

Congratulations!

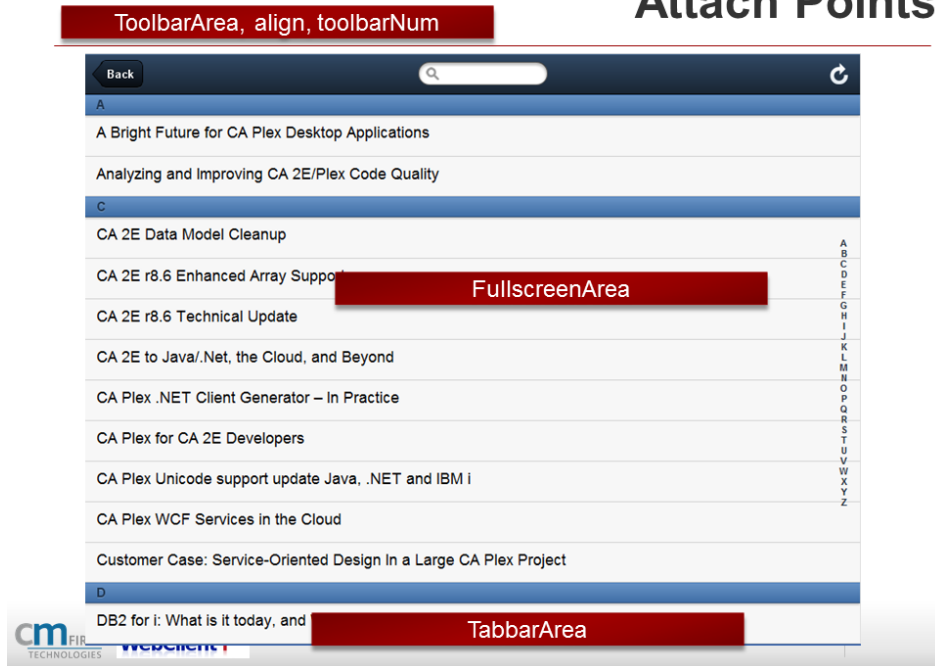
You have completed the workshop.



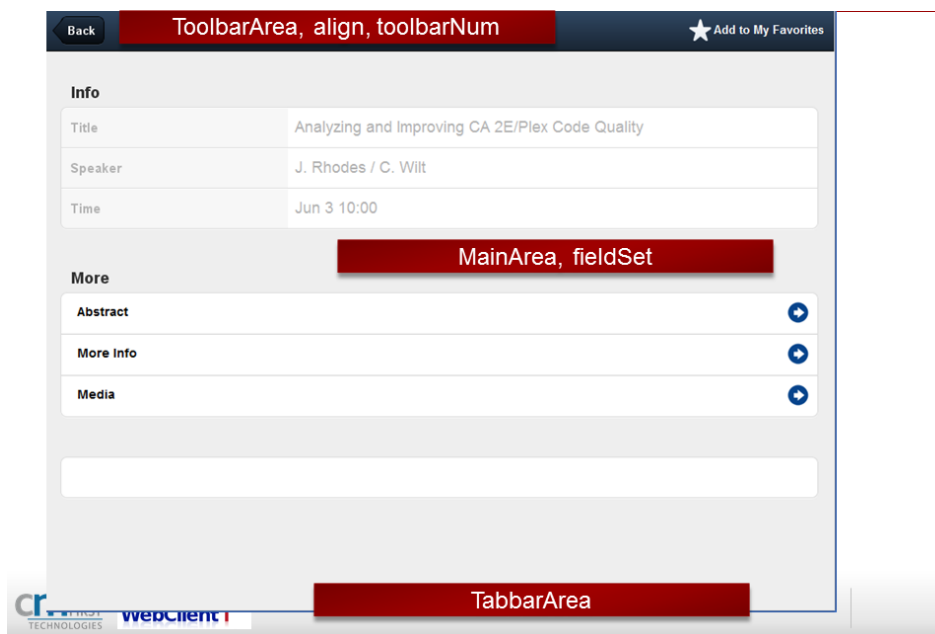
If you are interested in the XCode version of PhoneGap, contact CM First for this project file.

Appendix – Attach Points

Attach Points



Attach Points



Appendix – Reference

See this link of all styles in action

<http://dev.sencha.com/deploy/touch/examples/kitchensink/>

Button Appearance

Partial iconCls list (see sencha documentation)

- action
- add
- arrow_down
- arrow_left
- arrow_right
- arrow_up
- compose
- delete
- organize
- refresh
- reply
- search
- settings
- star
- trash
- maps
- locate
- home
- bookmarks
- download
- favorites
- info
- more
- time
- user
- team

Partial ui list (see sencha documentation)

- normal
- back

round
forward
action

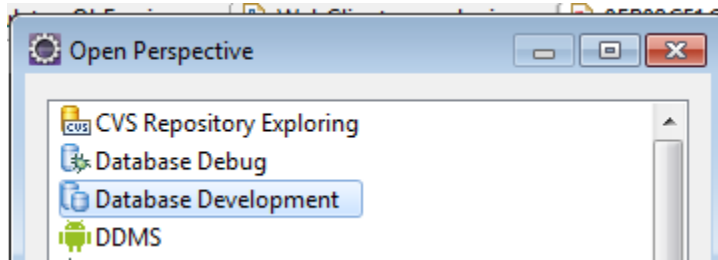
Animations

Slide
Fade
Cube

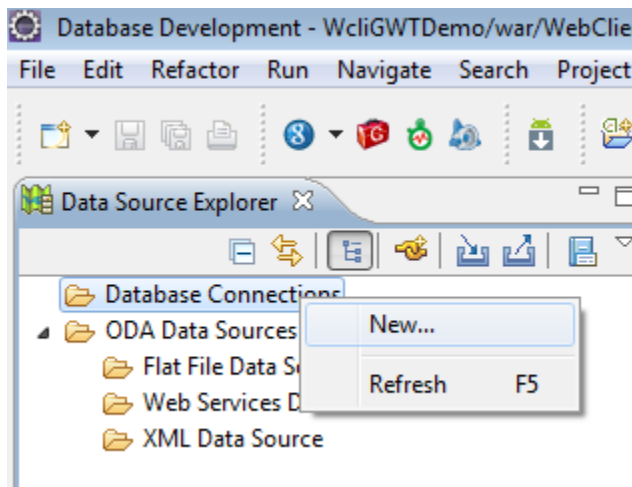
Appendix – Configure and Check your SQL Server Access from Eclipse

Set up and verify you can run SQL Server from your Eclipse environment.

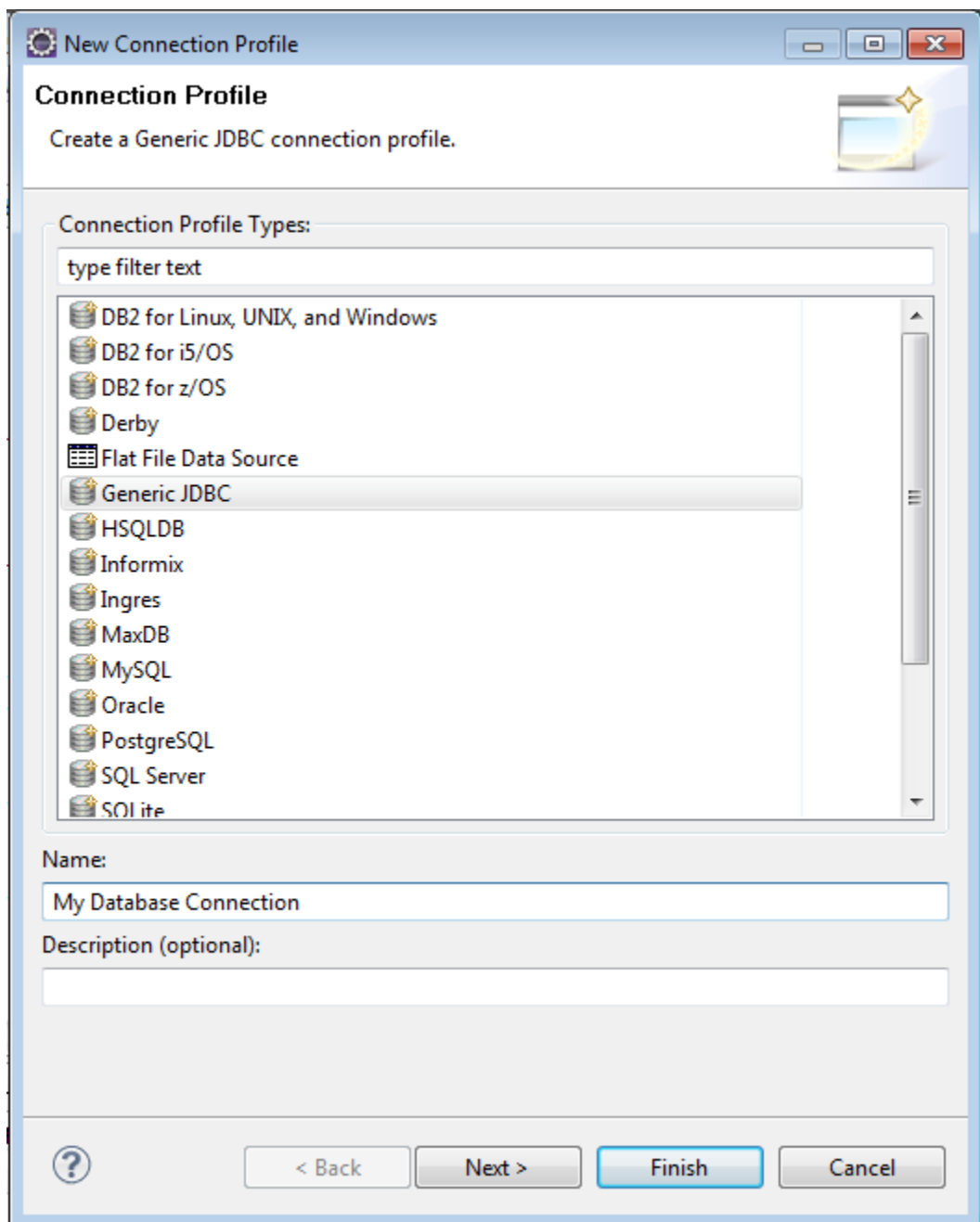
From Eclipse, go the Window menu and choose Open Perspective. Select Other... Then select the Database Development perspective.



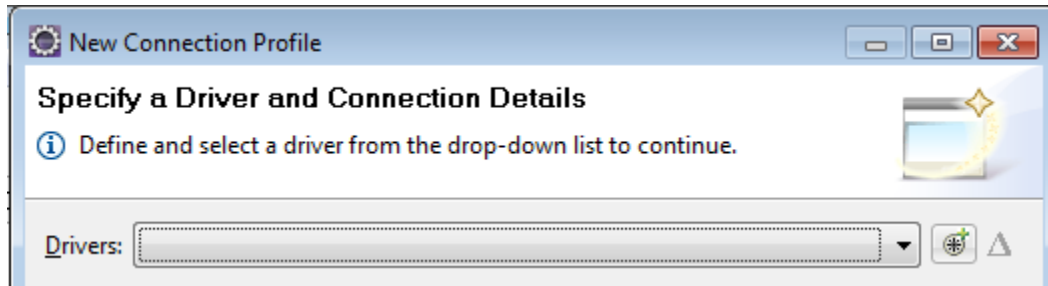
Right click on Database Connections and choose new:



Choose Generic JDBC and give it a name like “MySQLServer”. Note that the SQL Server choice will not work with SQL Server Express editions

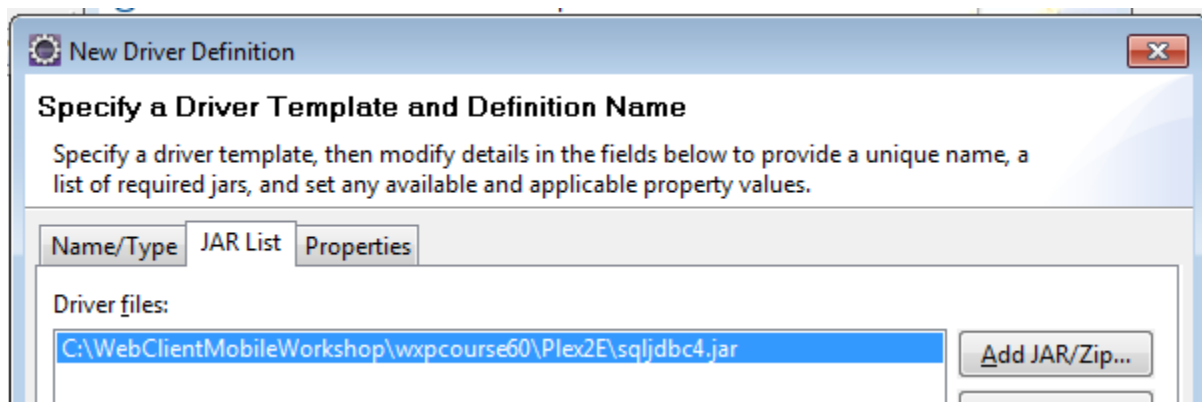


Choose the new driver button at the right of the combo

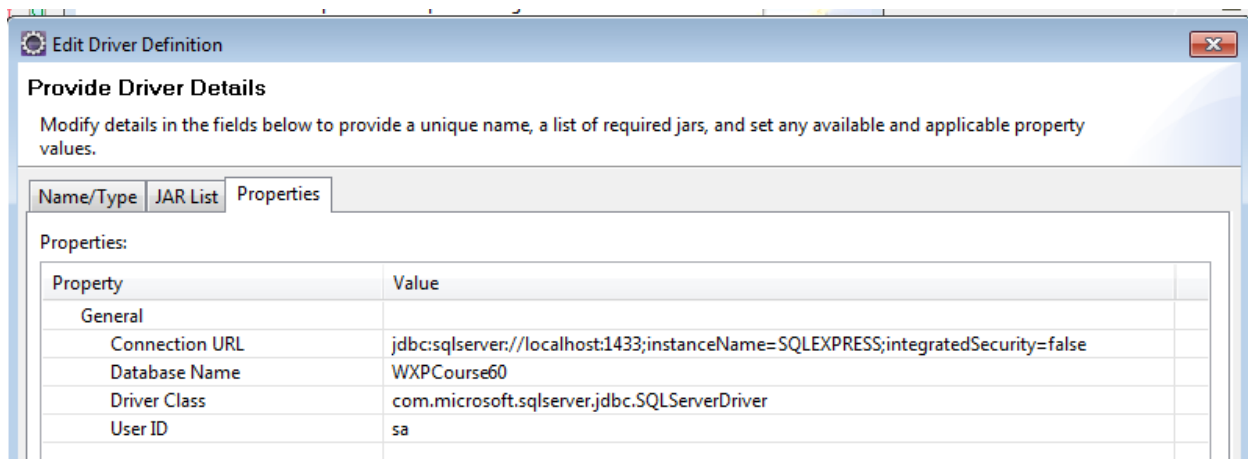


Go to the second tab and select the jar

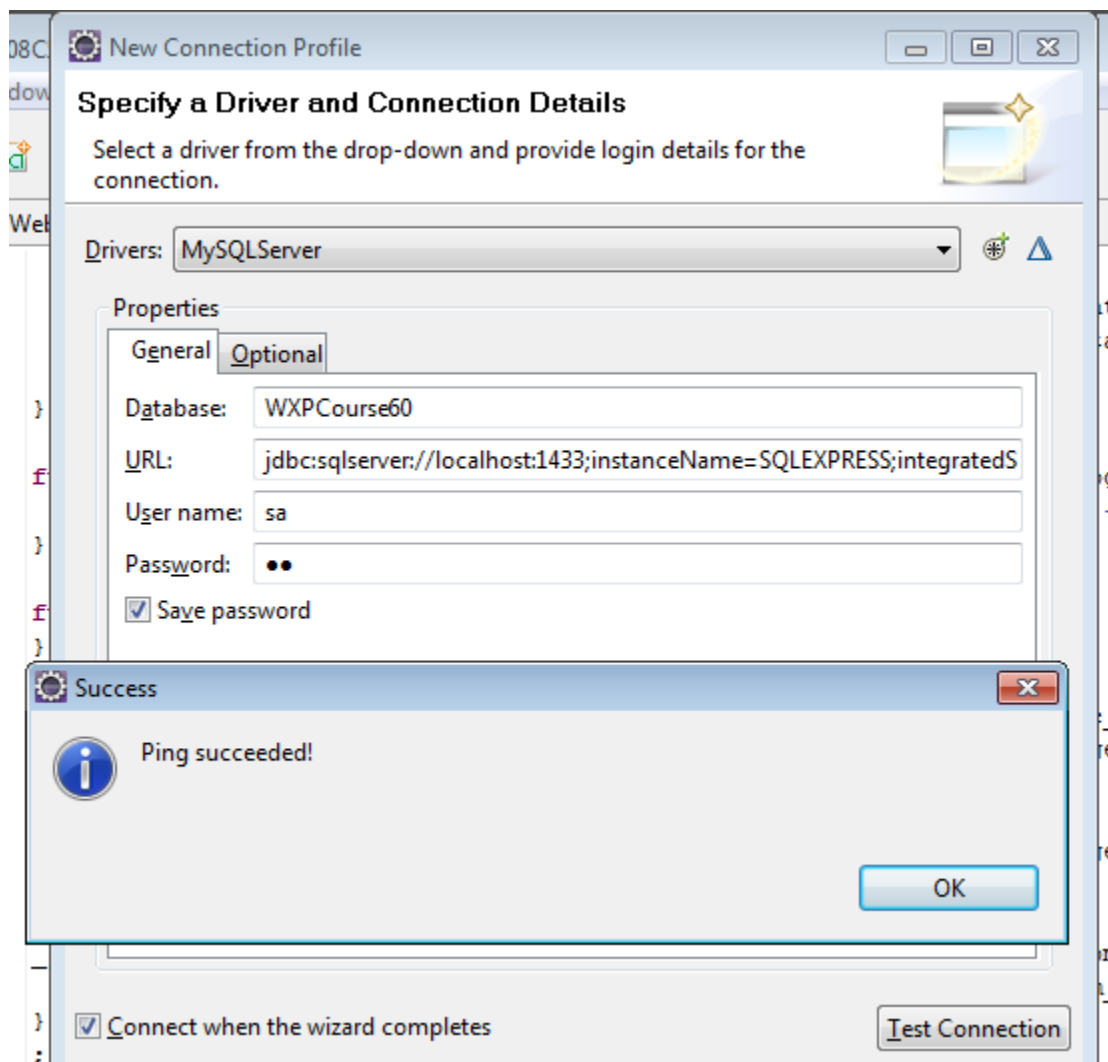
C:\WebClientMobileWorkshop\wxpcourse60\Plex2E\sqljdbc4.jar. Note this is not an integrated security jar – it will not work with integrated SQL Server security. To use integrated security you will need to obtain the appropriate jar from Microsoft.



Go to the Properties tab and create entries like this, using the strings in obclient.properties



When you get back to the connection profile screen, hit the Test Connection button and verify you can connect



Verify you can see the schema and tables

