

DevTest - CA AppTest/CA SV

Roadmap and Vision

Rick Bansal
Senior Principal, Product Management

March 1st 2017



Disclaimer

Certain information in this presentation may outline CA's general product direction. This presentation shall not serve to (i) affect the rights and/or obligations of CA or its licensees under any existing or future license agreement or services agreement relating to any CA software product; or (ii) amend any product documentation or specifications for any CA software product. This presentation is based on current information and resource allocations as of March, 1, 2017 and **is subject to change or withdrawal by CA at any time without notice. The development, release and timing of any features or functionality described in this presentation remain at CA's sole discretion.**

Notwithstanding anything in this presentation to the contrary, upon the general availability of any future CA product release referenced in this presentation, CA may make such release available to new licensees in the form of a regularly scheduled major product release. Such release may be made available to licensees of the product who are active subscribers to CA maintenance and support, on a when and if-available basis. The information in this presentation is not deemed to be incorporated into any contract.

Copyright © 2017 CA. All rights reserved. All trademarks, trade names, service marks and logos referenced herein belong to their respective companies.

THIS PRESENTATION IS FOR YOUR INFORMATIONAL PURPOSES ONLY. CA assumes no responsibility for the accuracy or completeness of the information. TO THE EXTENT PERMITTED BY APPLICABLE LAW, CA PROVIDES THIS DOCUMENT "AS IS" WITHOUT WARRANTY OF ANY KIND, INCLUDING, WITHOUT LIMITATION, ANY IMPLIED WARRANTIES OF MERCHANTABILITY, FITNESS FOR A PARTICULAR PURPOSE, OR NONINFRINGEMENT. In no event will CA be liable for any loss or damage, direct or indirect, in connection with this presentation, including, without limitation, lost profits, lost investment, business interruption, goodwill, or lost data, even if CA is expressly advised in advance of the possibility of such damages.

Agenda

1

DEVTEST (SV/APPTTEST) OVERVIEW

2

OVERALL STRATEGIC THEMES/GOALS

3

DEVTEST 10.0

4

THE NEAR FUTURE AND THE ROAD AHEAD

5

Q&A

CA Service Virtualization and Testing Solution (SV&T)

DevTest

Industry leading foundation for companies to design, develop and release software with greater agility and higher quality

CA APPLICATION TEST

Allows for all types of testing of multi-tiered architectures at any layer

CA SERVICE VIRTUALIZATION

Allows for Constraint-free Development and Testing of Software

Strategic Themes

INNOVATION

New Customers and Markets

EASE OF USE

Intuitive and Simple Workflows

ENTERPRISE SCALE

Manage Total Cost of Ownership

VALUE DRIVERS

Intra-BU Product Integration

TDM/ARD/BlazeMeter Integrations

Simplified User Experience

Persona Based UI to Meet Needs of Workflows
with Different Levels of Complexity

Enterprise Service Catalog

Enabling COE and Sharing in Dev & Test

Integration APIs for CRUD

Allow Developers/QEs to Move Faster and Create
Custom Integrations

CD/CI Pipeline Integration

Plug-ins for CI/CD Tools (Jenkins, Gradle,
TeamCity, ...)

Enterprise-Class Management

Access Controls, Security, Clear ROI Reporting,
License Management, Resource Management

Integration with Developer Tools

IDE Plug-ins, In-memory/Self-Contained VS ("as
code")

Try and Buy

Standalone Trial Version of SVT

Packaging for Cloud

Docker, AWS, Azure

Vertical Solutions Expansion

SAP, SFDC, ...

Seamless Migration Path

Individual → Work Group → Enterprise

DevTest 10.0

GA: December 16th



Major Features/Enhancements

Definition and MVP for SV Express

ARD/AppTest Integration

Support for Additional Data Protocol Handlers

Improved UX

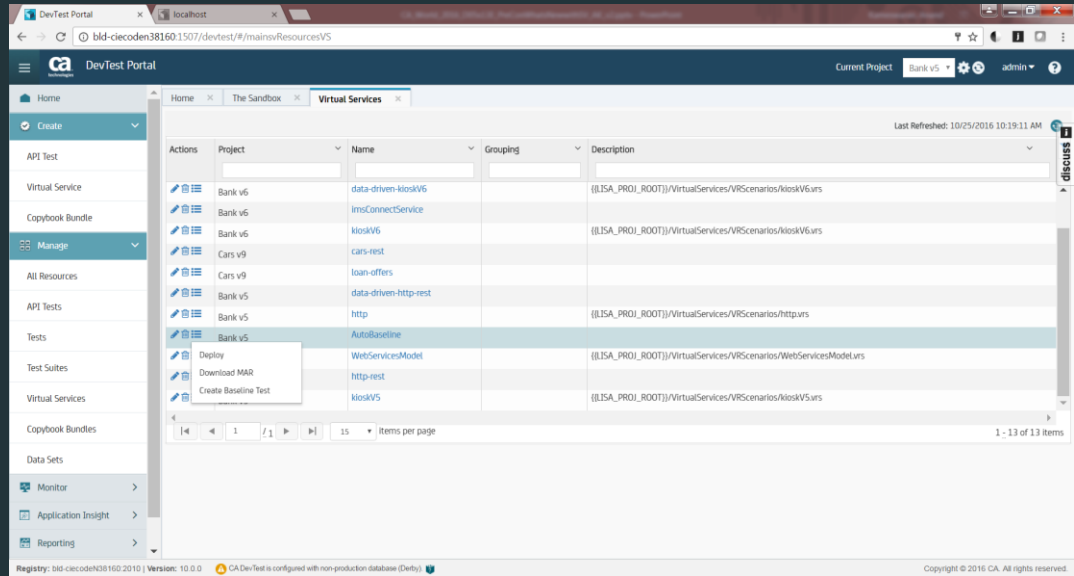
Features in 10.0

FEATURE NAME	FEATURE DESCRIPTION
SV: Create Tests from an Existing Virtual Service	Enables creating an AppTest baseline test case from an existing service.
SV: RR Pair Creation	Create virtual services and base line test cases directly from RR pairs in the Portal.
SV: Create Automation APIs for VS - SWAGGER 2.0	Enhanced Swagger 2.0 compliant Integration API to allow for the creation/configuration/maintenance of virtual services and test cases
SV: Create Virtual Service from WSDL	Create virtual services from a WSDL specification in the Portal
SV: Virtual Service Matching Information in Portal	Enhanced inspection view within the Portal of transactions processed by the VSE.
SV: Virtual Service Configuration	Enables the “reconfiguration” (e.g., base path, port number, name, ...) of an existing virtual service directly from the Portal. Eliminates the need to open the VSM in the Workstation.
SV: Create Virtual Service from SWAGGER 2.0 Specification	Full support for creating virtual services from a Swagger 2.0 design spec (Workstation only)
APT: Swagger 2.0 Import Wizard to Create API Tests	Enables creation of AppTest test cases from a Swagger 2.0 design spec (Workstation only)
APT: Swagger 2.0 Bulk Import to Create API Tests	Enables creation of AppTest test cases from multiple Swagger 2.0 design specs (Workstation only)
APT: Swagger 2.0 Sample Data Import to Drive API Tests	Enables creation of data sets from a Swagger 2.0 design spec (Workstation only)
MF: Add Support for CTG 9.2 and Below	Update our support for CTG to 9.2.
MF: AppTest Support For CICS in Portal from Capture	Create AppTest test cases directly from the CICS agent capture data. Invoke
MF: Add Transaction List to Copybook Mapping Tab	Usability enhancement when using the copybook payload.

Portal and Workstation Enhancements

Create Tests from an Existing Virtual Services

- Create baseline tests without having to re-record.
- Ensure consistent data scenarios between Virtual Services and Baseline tests

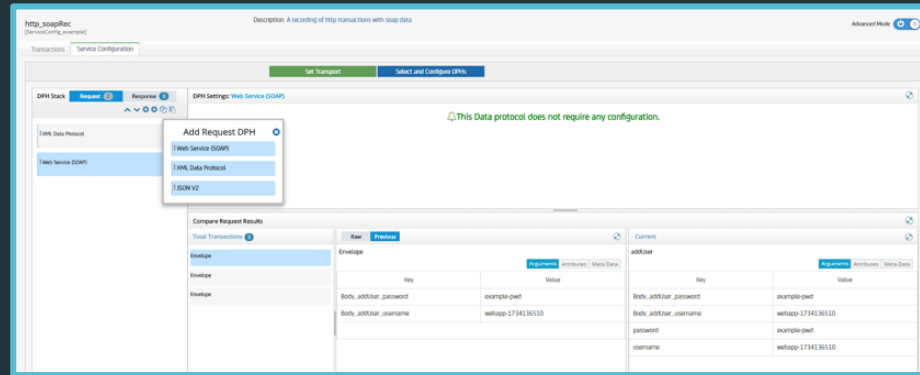
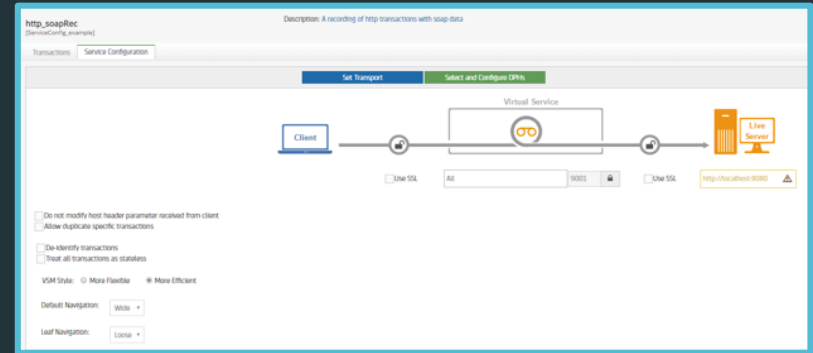


Create Virtual Services from WSDL in the Portal

- Enables customers to create virtual web services when recording is not an option or not preferred.
- Exposing the functionality through portal makes it easier to onboard additional users and virtual services without needing a workstation environment

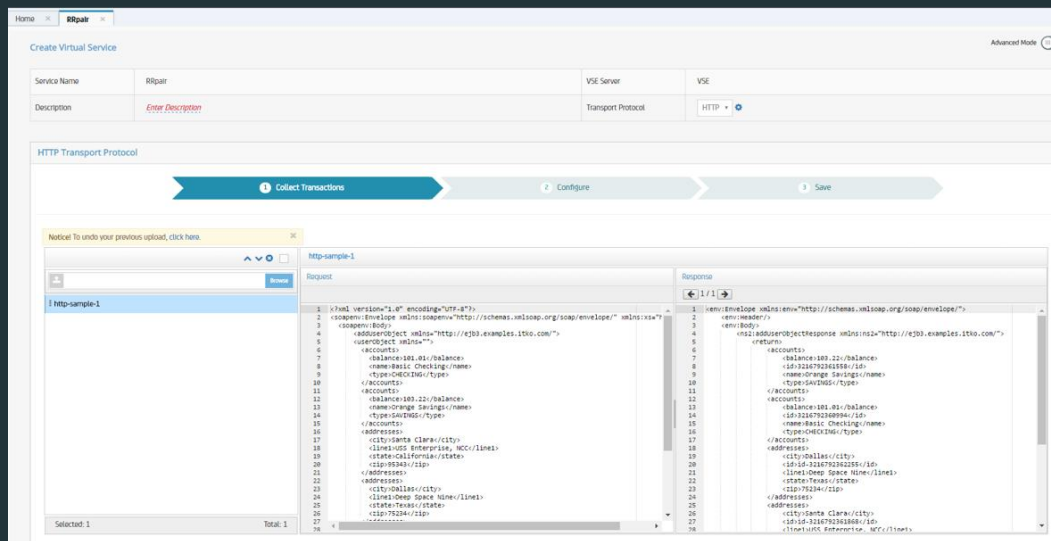
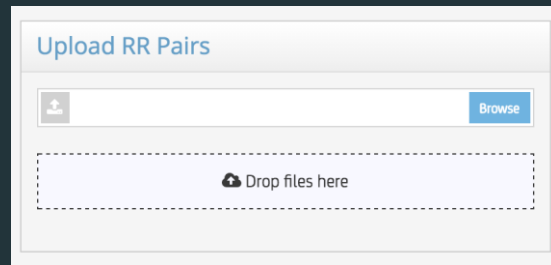
Service Configuration

- Eliminates the need to re-record transactions to change virtual service behavior
- Enables reconfiguration of HTTP Transport Protocol settings in the portal
- Editing and enhanced visibility into Data Protocol Handlers makes creating and maintaining virtual services easier than ever



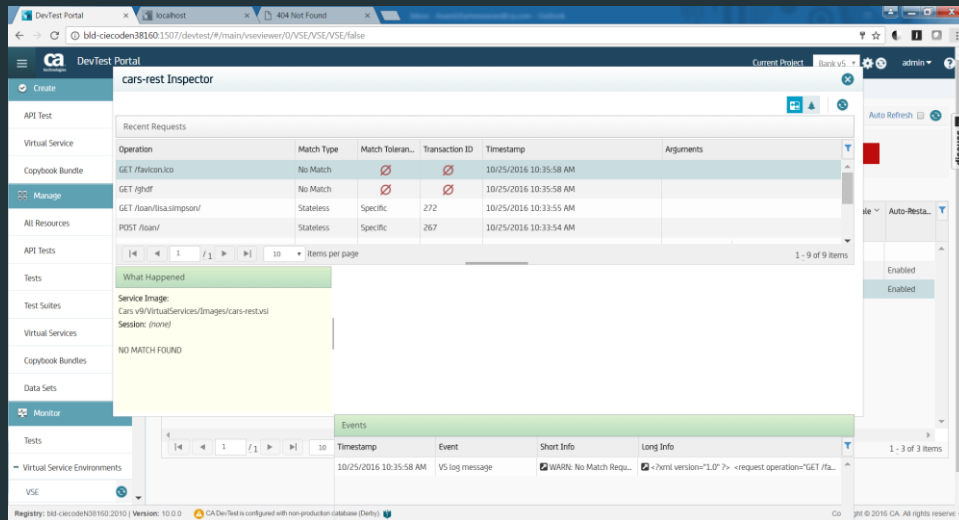
Create from RR Pairs

- Improved workflow enables changing transport settings at creation time
- RR Pair based services are now automatically placed into projects and available for subsequent editing
- Add, edit and remove request response pairs as needed
- Pick up where you left off with resume creation capabilities
- Auto-generate Baseline Test Cases



Improved Inspection View

- Simplifies understanding “what” happened for requests and responses in the VSE
- Puts the most relevant information front and center in inspection view



Create Virtual Services and Tests from Swagger 2.0

- Create REST based virtual services and test cases using SWAGGER 2.0 specifications
- Supports parallel development enabling clients to test before the actual service is implemented

Mainframe Enhancements

Mainframe – CICS Program Visibility

Single User
Interface for
Mainframe CICS
Recording and
Playback

DEM3-CICST51 -Root-DEMOAPP3

Start Time: 07/27/2016 9:43:27 AM 386 Wall Time: 1611261ms
Transaction ID: 7a8c37a2-5408-11e6-adec-025041000101 Usage Count: ☐ Enable Go to shelf

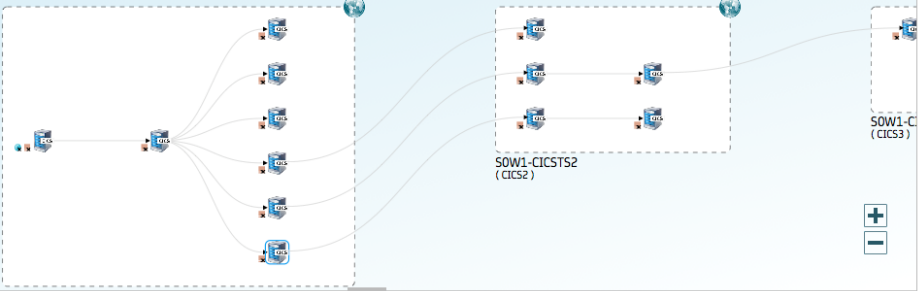


Diagram illustrating the CICS program flow, showing a sequence of programs (CICS) connected by arrows, representing the execution path. The diagram includes a central node labeled 'SOW1-CICST52 (CICS2)' and a final node labeled 'SOW1-C (CICS3)'.

Frame Request Response Log Messages XML Exception

Raw Values Encoding: IBM037

0000	01000000 00C9D5D8 E4C9D9C5 60C3C8C1 INQUIRE - CHA
0010	D5D5C5D3 4000C9D5 D8E4C9D9 C560C2C1	N N E L . INQUIRE - BA
0020	D3C1D5C3 C5400000 000026F0 F0F0F0F0	L A N C E 0 0 0 0 0
0030	F0F0F140 5BF16BF0 F0F04BF0 F0404040	0 0 1 \$ 1 , 0 0 0 . 0 0
0040	4040405B F9F6F24B F1F64040 40404040	\$ 9 6 2 . 1 6
0050	40C9D5D8 E4C9D9C5 60D7C8D6 D5C54040	I N Q U I R E - P H O N E
0060	40000000 0015F0F0 F0F0F0F0 F0F140F9 0 0 0 0 0 0 1 9
0070	F7F24BF5 F5F54BF0 F0F0F1C9 D5D8E4C9	7 2 . 5 5 5 . 0 0 0 1 I N Q U I
0080	D9C560D5 C1D4C560 C1C4D900 00000076	R E - N A M E - A D R
0090	F0F0F0F0 F0F0F0F1 40C34040 40404040	0 0 0 0 0 0 0 1 C
00A0	40404040 40404040 4040C299 96A69540	B r o w n
00B0	40404040 40404040 404040F1 F6F0F440	1 6 0 4
00C0	C39996A2 A240C285 958440D9 84404040	C r o s s B e n d R d
00D0	40404040 40404040 40404040 40404040	
00E0	40404040 40404040 40404040 40D79381	F l a
00F0	95964040 40404040 4040E3E7 40F7F5F0	n o T X 7 5 0
0100	F2F34040 4040C9D5 D8E4C9D9 C560E4E2	2 3 I N Q U I R E - U S
0110	C5D94040 40400000 00003DE2 E8E2C9C4	E R S Y S I D
0120	7A40E2F6 F7F040E4 E2C5D940 C9C47A40	: S 6 7 0 U S E R I D :
0130	C3C9C3E2 E4E2C5D9 40E4E2C5 D940D5C1	C I C S U S E R U S E R N A
0140	D4C57A40 40404040 40404040 40404040	M E :
0150	40404040 40404040	

Shelf - Create Virtual Service

Virtual Services: 1

1469630595623_DEM3-CICST51-Link-DE... Shelfed: **Enable**

☒ Report "No Match" ☐ Bypass Virtual Service

☐ * Use VRS file: [] [Choose]

☒ * Use Copybook Bundle: CICS [] IBM037 []

* Required field

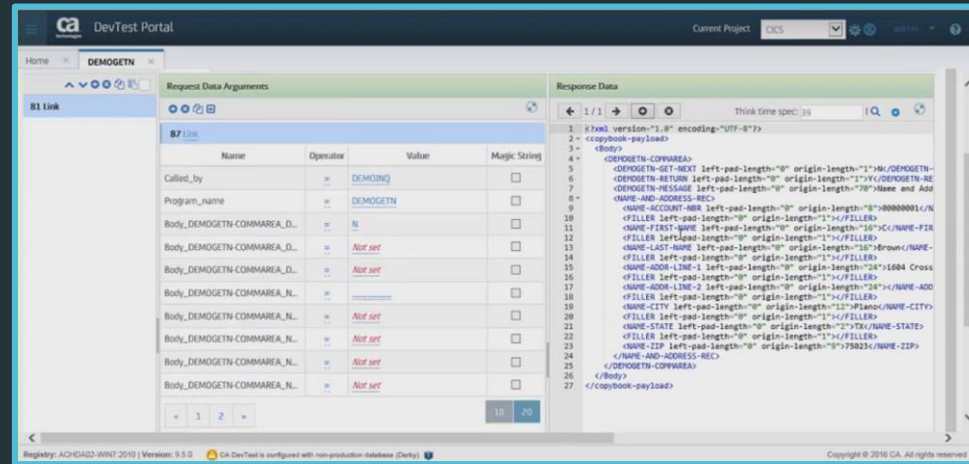
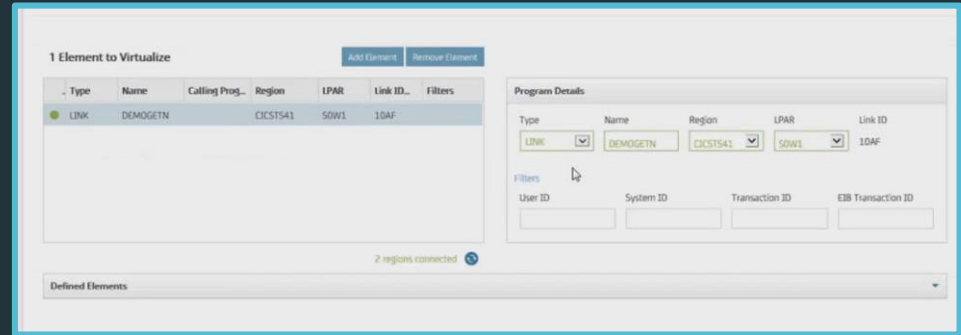
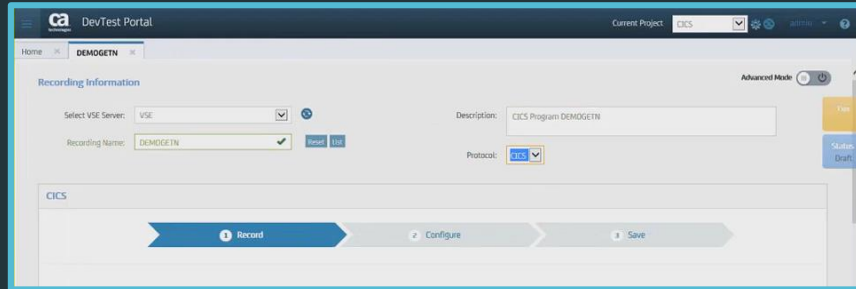
Back to shelf Next

Show All Agents

SOW1-CICST51

Create Virtual Services and Tests CICS Programs in the DevTest Portal

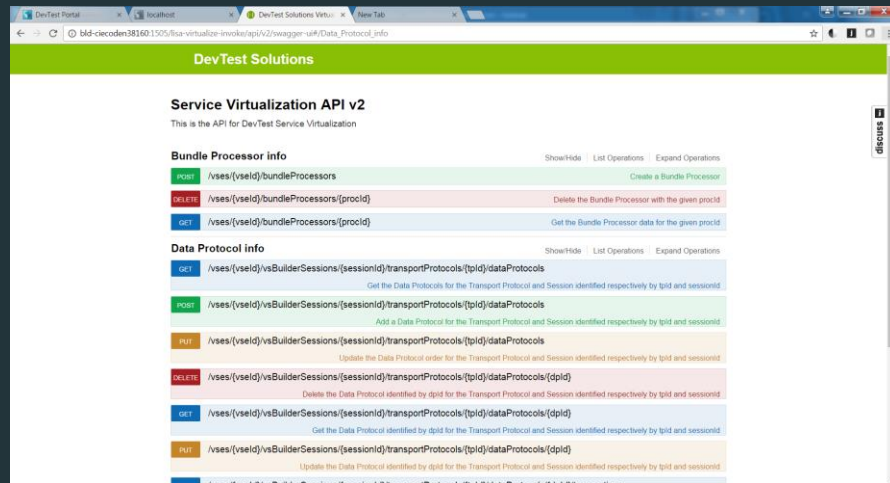
- Record CICS Programs via familiar screens in the DevTest Portal
- Validate and select your CICS Agent and CICS Copybook all one UI



Automation

Integration API - Create/Edit Virtual Services

- Enables developers/QA/QE engineers to automate the creation and editing of virtual services using a REST based API
- Easy integration from any CI tool
- Uses SWAGGER 2.0 to define the API to support rapid prototyping and stubbing



The Near Future



DevTest 10.1 Major Features/Enhancements

GA: April 10, 2017

Definition and MVP for SV Express – Foundational framework and UX/UI

ARD/AppTest Integration

Initial Performance Benchmarking – MQ and HTTP

Engineering Excellence

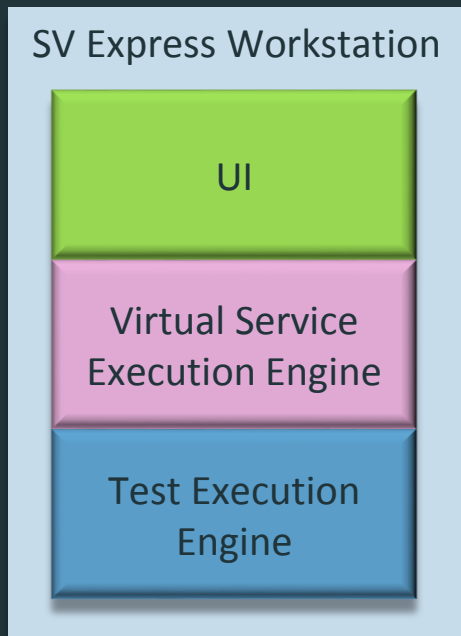
Various Research Activities (SPIKES) – Licensing, SAP, Developer Tools

Laying the foundation for the Road Ahead

The Road Ahead

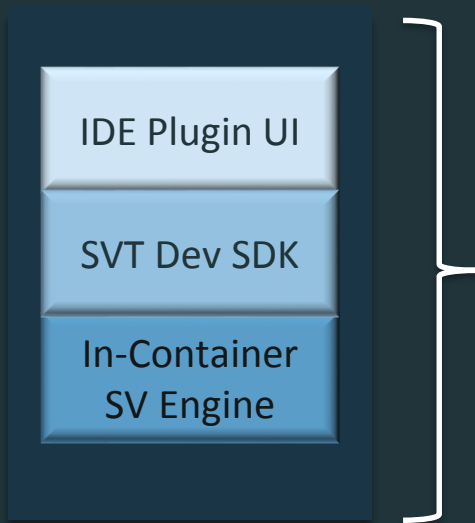


SV Express Capabilities



- **Standalone Server** (Self-contained architecture, no configuration required)
- **Individual User Model**
- **Simplified User Experience** (at least as good as SOAP UI)
- **Thick Client UI** (Java Swing based)
- **Minimal Footprint:** < 300 MB package size; 2 CPU cores, 1 GB RAM, 5 GB disk.
- **Transport Protocols:** HTTP, HTTPS
- **Data Protocols:** JSON, REST, SOAP, SOAP w/Headers, XML, Request Data Manager, Generic XML Parser
- **Create From:** Recording, RR Pairs, Design Spec (WSDL, Swagger, RAML), Chrome Extension like functionality
- **Test Capabilities:** Web Services, Local Execution
- **Monitoring:** Current test results, virtual service inspection
- **Debugging:** Multiple ITRs
- **Filters, Assertions and Datasets:** Basic ones related to REST/SOAP/JSON/XML
- **Shareable Assets:** Test cases, virtual services can be used by DevTest Enterprise

SV For Dev (SV4Dev)



- **In-Container Architecture**
- **Free** (Possibly Open Source)
- **Individual User**
- **Build mindshare across Developer community**
- **Transport Protocols:** HTTP, HTTPS, Java, JDBC
- **Data Protocols:** JSON, REST, SOAP, SOAP w/Headers, XML
- **Create From:** Recording, RR Pairs, Design Spec (WSDL, Swagger, RAML), SV-Dev API
- **“As Code” virtual services and tests**
- **Assets will easily migrate to other SV&T offering**
- **Test Capabilities:** Exploratory

Portal Enhancements

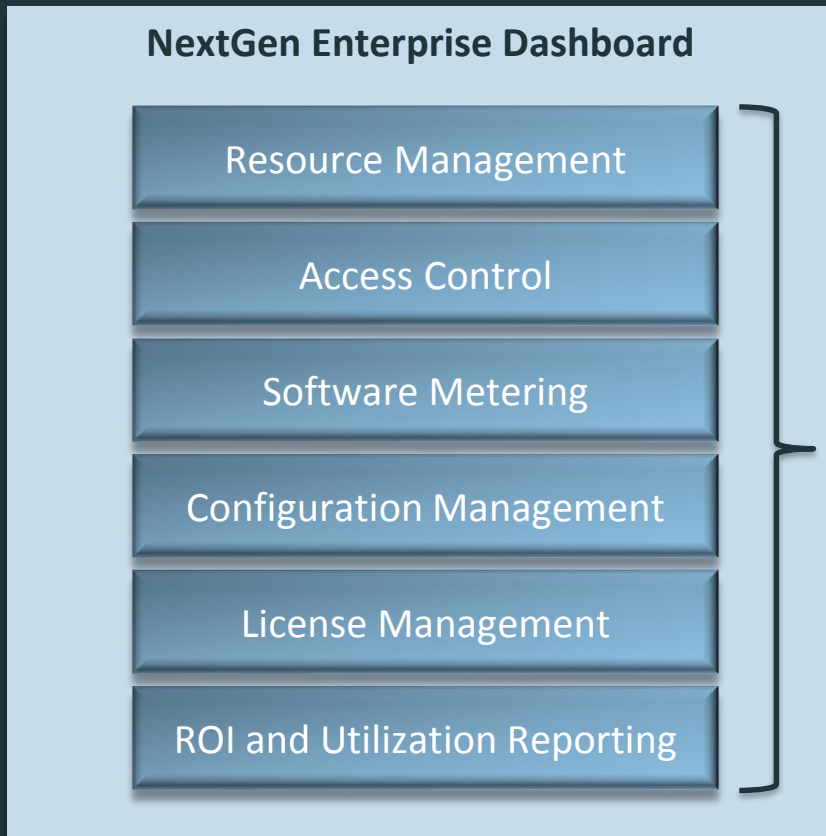
Exploratory Testing for Web Services - HTTP/S, JSON, REST, XML, SOAP

UI Simplification

Support for Additional Data Protocol Handlers – GXPP, RDM, Scriptable

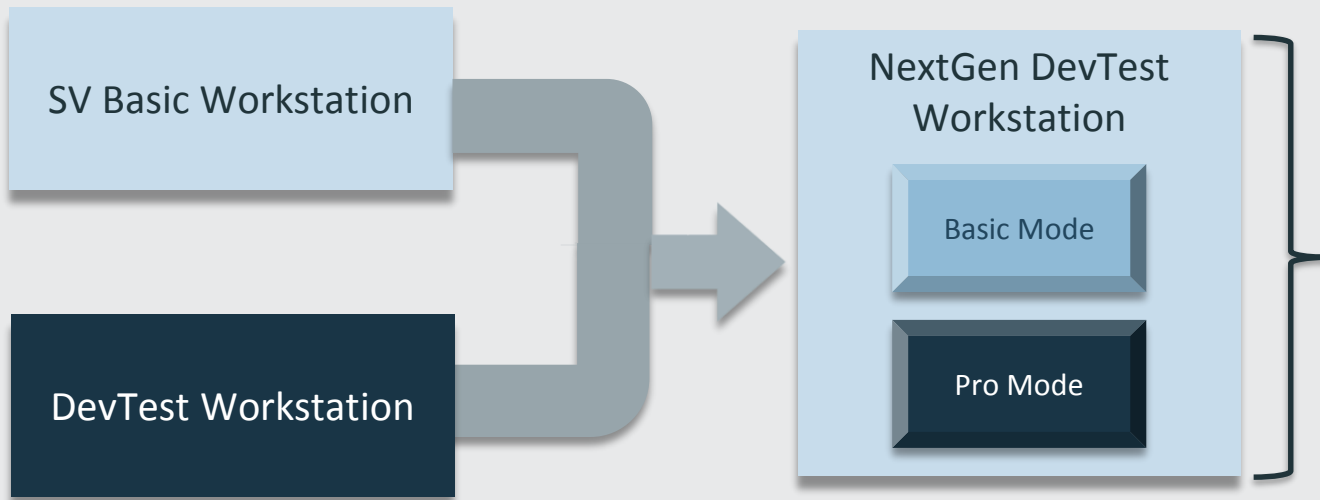
Improved UX – Incorporation of relevant UX work done for SV Express

NextGen Enterprise Dashboard



- Web based UI with improved UX and reimagined UI
- Centralized Command and Control
- Centralized Access Management
 - Capabilities Based Access
 - Resource Based Access
- Centralized Metric Collection and Reporting
- Centralized License Management

NextGen DevTest Workstation



- **Reimagined and Rearchitected UX/UI**
- **Standalone or Connected Execution Models:** Can execute as a standalone component or as a connected component to the Registry
- **Thick Client UI** (Built on SV Basic Workstation)
- **Multi Operational Modes:**
 - Basic Mode - SV Basic functionality
 - Pro Mode – Full DevTest functionality

DevTest Product Roadmap

	FY18Q1	FY18Q2	FY18Q3	FY18Q4	FY19Q1	FY19Q2
Enterprise Adoption	SV Express Licensing & Metering Consumption based licensing	Next Gen Workstation Usage telemetry & ROI Packaged Apps Support SAP, Oracle				
	Portal Enhancements API (REST/SOAP) Test	Enhanced Enterprise Experience Manageability	Seamless upgrades	Fine grain RBAC		
	SV Test Drive For sales lead gen			SV Asset Sharing Test and virtualization asset sharing across customer teams		
SV for Developer	SV for Developers SV for Developers Prototype, IDE plug-in	SV for Developers MVP	SV for Developers 2 WireMock library abstraction , additional IDE plug-in			
SV & the Cloud	SV BYOL in AWS, Azure Initial AMI Deployment	Architectural enhancements SV-as-Service Research Spike	Prototype	MVP		
AppTest		Integration APIs Update AppTest APIs		CICD Plugins Jenkins, Team City, Gradle		



Q & A