

AD SWAT

DevTest
8.0.2



Migration to DevTest 8.0.2

CA DevTest 8.0.2

Prepared by: Koustubh Warty
Date: April 2015

Table of Contents

Chapter 1: Introduction	4
Purpose.....	4
Document Changes.....	4
Name changes	4
Product Name	4
Important Changes for DevTest 8.x onwards	4
Reporting Issues	4
Chapter 2: Prerequisites	5
Understand the key points prior to migration	5
Supported Migration Releases	5
Enterprise Dashboard.....	5
Licensing	5
Databases	5
Supported Internet Browsers	5
Chapter 3: Pre-Installation Checklist	6
Licensing	6
Backup Data	6
Download	6
Chapter 4: Installation	8
Installation	8
Lisa Coexistence.....	8
Shutdown Lisa Windows Services	8
Installation steps to upgrade to DevTest 8.0.2	8
Chapter 5: Post-Installation Tasks	17
Configuring DevTest 8.0.2	17
Create a new database for DevTest 8.0.2	17
Update the .properties files.....	17
Copy the Lisa assets	18
Migration of Lisa assets from 6.x to DevTest 8.0.2.....	18
CVS Monitors	19
Chapter 6: Remote Components	20
Probable Remote Components list.....	20
Upgrading the remote components	20
Chapter 7: Verifying Installation	22
DevTest Workstation.....	22
DevTest Portal	25
Chapter 8: Appendix	27
User Administration	27

Chapter 1: Introduction

Purpose

The purpose of this doc is to assist the CA DevTest administrators to upgrade their CA Lisa version to the newest CA DevTest 8.0.2. The DevTest 8.0.2 docs can be found here -

<https://wiki.ca.com/display/DTS802/DevTest+Solutions+-+Home>

Document Changes

Version	Date	Author	Version
8.0.2 GA	04.17.2015	Koustubh Warty	Version 1

Name changes

The set of DevTest 8.x products are renamed. LISA is no longer part of the product names.

Product Name

With version 8.x product names have changed. Purpose of the name change is to put the product functionality into focus. Mainly LISA was removed from official product name.

Current Product Name	Formerly Known As
CA Service Virtualization	CA LISA Service Virtualization
CA Application Test	CA LISA Test
CA Continuous Application Insight	CA LISA Pathfinder

The LISA prefix was not only removed from product names, but also from some well-known file and component names. So there is no LISA Workstation any more, for instance, but a Workstation. LISAWorkstation.exe is renamed to Workstation.exe. Nevertheless, there might still be rare occurrences of 'LISA' in the product.

Important Changes for DevTest 8.x onwards

#	Marquee Feature	Details
1	Licensing	Moved from component licensing to concurrent user licensing. No Internet access to License server required. Only file based licensing
2	Enterprise Dashboard	Reports on license usage and is now a mandatory component.

Reporting Issues

Please send your questions/comments/concerns on this document to Koustubh.Warty@ca.com or Ulrich.Vogt@ca.com

Chapter 2: Prerequisites

Understand the key points prior to migration

Supported Migration Releases

- The assumption here is that you have an existing older version of CA Lisa and you want to upgrade to the latest CA DevTest 8.0/8.0.1/8.0.2 release
- This doc is based on the DevTest 8.0.2 x64 Windows Installer
- As long as you have CA Lisa version 6.0 and above, you can upgrade directly to DevTest 8.0.2
- If you have any releases prior to 6.0, then please contact your account manager to obtain the download version for 6.0. The reason being that you have to be at a minimum version of 6.x and above to migrate to DevTest 8.0.2

Enterprise Dashboard

- Even if you have an older version of the Enterprise Dashboard (7.x releases), you will have to install the Dashboard that comes with DevTest 8.0.2
- The installer for DevTest 8.0.2 now includes the install for Enterprise Dashboard
- The Enterprise Dashboard manages the license and is therefore now a mandatory component to install
- The license key for DevTest 8.0.2 is stored in a file. The file name is devtestlic.xml.
- DevTest 8.0.2 installer will prompt you for the license location and then copy the license file to {{LISA_HOME}} directory on the Server where your Enterprise Dashboard is installed
- The license file is not required on any other Server or Workstation
- When installing a new Enterprise Dashboard the location of the license key file has to be specified

Licensing

- The licensing for DevTest 8.x has changed significantly compared to the prior releases
- The only mode of licensing moving forward is the file based licensing. All other licensing modes no longer work for the 8.x release. Please contact your account manager to acquire the new license
- If you would like to keep your access to Continuous Application Insight transactions paths and your older database reports, please contact your account manager to obtain a different license for the legacy information

Databases

- CA Technologies does not support upgrading the database from a prior release. DevTest 8.0.2 must be installed into a new fresh database. You could create a new database for DevTest 8.0.2 and call it DevTest8. This is the name we will be using in this upgrade document.
- If you would like to keep access to your older database reports, please contact your account manager to obtain a different license for the legacy information

Supported Internet Browsers

Please refer to the documentation bookshelf → Install Guide at

<https://wiki.ca.com/display/DTS802/DevTest+Solutions+-+Home>

Chapter 3: Pre-Installation Checklist

Licensing

As mentioned earlier, please contact your account manager to acquire a new license for 8.0.2. Alternatively, you could contact the CA Support line. Copy the devtestlic.xml file to the downloads folder which contains the 8.0.2 installer and the DevTestDemoServer zip file.

Backup Data

This is a mandatory step that needs to be done prior to proceeding with the upgrade. Even though we will be installing DevTest 8.0.2 to a new location in the next section, it is prudent to back up the following to a remote location

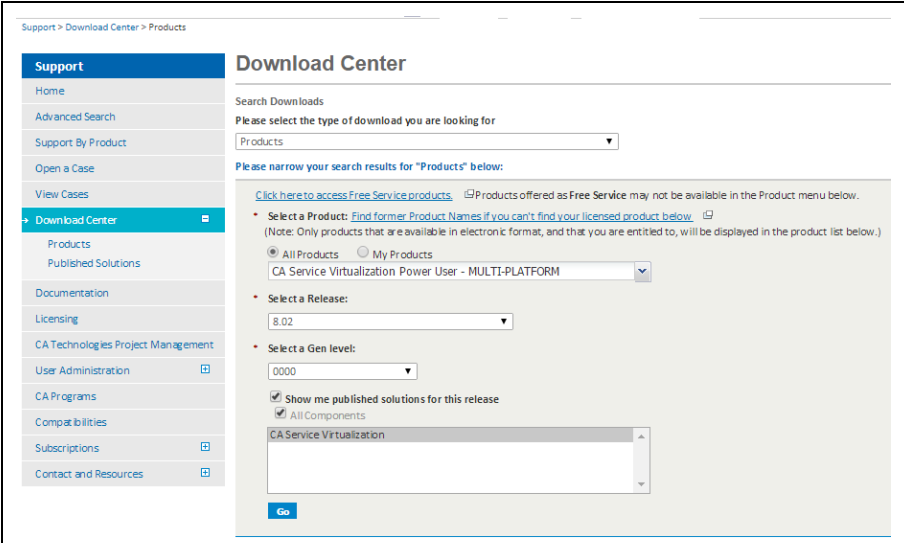
- The entire existing Lisa folder

This would take care of the following which are important files in your installation

- Properties files (local, site, lisa)
- Virtual Services (if stored locally)
- Application Test tests (if stored locally)
- HotDeploy folder
- vseDeploy folder

If you have stored your existing Tests and Virtual Services in a Source Control Repository, then the recommendation is to make a copy of those assets. Once that copy is created, you can use the new copy with DevTest 8.0.2. In this case, if there are any issues, then you would have a backup to fall back on if required.

Download



DevTest 8.0.2 can be downloaded from the CA Support site at <http://support.ca.com> → Download Center -->Products. Search for CA Service Virtualization

Chapter 4: Installation

Installation

Enterprise Dashboard is no longer a separate installer, but integrated and mandatory.

Note: DevTest 8.0.2 installation requires Enterprise Dashboard service 8.0.2. Enterprise Dashboard service that comes with LISA 7.5 will not support DevTest 8.0.2.

DevTest 8.0.2 installations connecting to an existing Enterprise Dashboard service 8.0.2 do not require a license file, but require specification of an existing Enterprise Dashboard service 8.0.2 to register with.

A license key file is required for DevTest 8.0.2 installations with a new Enterprise Dashboard service.

The demo server can be installed optionally and has to be specified during the installation process if required.

All end user license agreement files are also integral part of the installer now and do not need any separate download nor additional path specification during the installation process.

Lisa Coexistence

DevTest 8.0.2 requires Enterprise Dashboard 8.0.2 to run. DevTest 8.0.2 does not work with Enterprise Dashboard 7.5.2, because Enterprise Dashboard 8.0.2 only supports the new licensing, which Enterprise Dashboard 7.5.2 does not. Please make sure that Enterprise Dashboard 7.5.2 is not running when starting EDS 8.0.2. DevTest 8.0.2 can coexist with LISA 7.5.2 on the same box in different install directories, but the services cannot: i.e. LISA 7.5.2 services and applications must be shut down when starting DevTest 8.0.2 services and applications, and vice versa. The last statement is with the assumption that your existing Lisa components run as a Windows service.

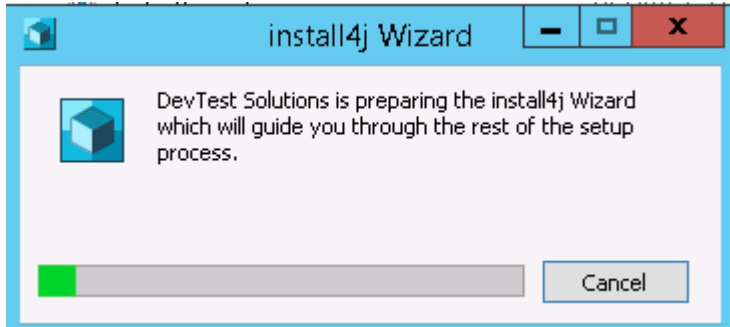
Note: DevTest 8.0.2 installation requires Enterprise Dashboard service 8.0.2. Enterprise Dashboard service that comes with LISA 7.5 will not support DevTest 8.0.2.

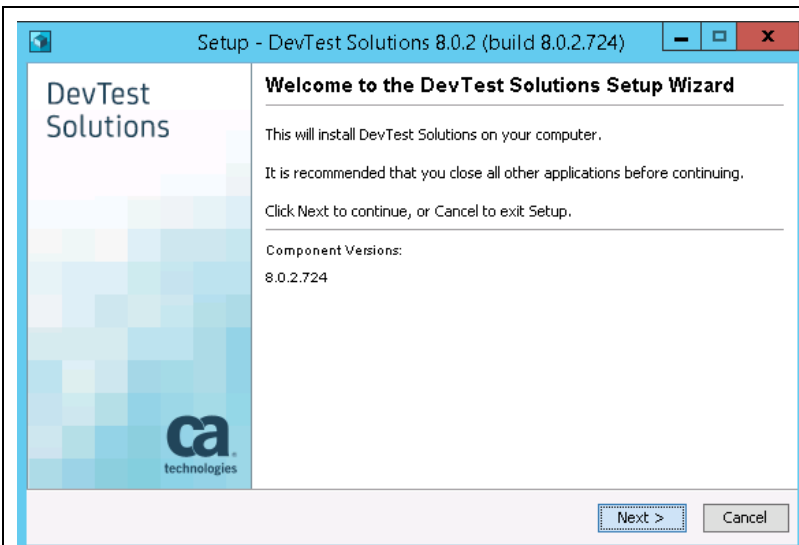
Shutdown Lisa Windows Services

Shutdown the following component services (if your existing Lisa runs as Windows services). This is applicable for the various components installed remotely that connect to the Registry.

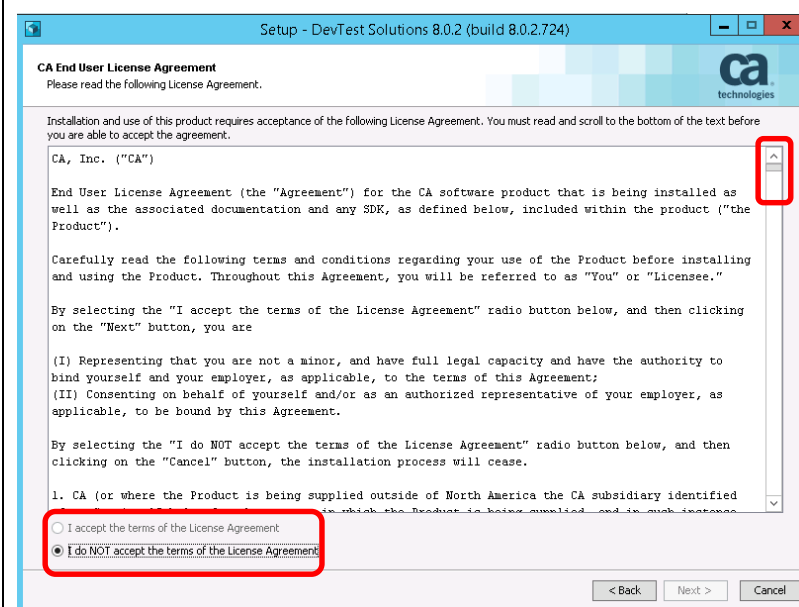
- LISA Registry Service
- LISA Coordinator Service
- LISA Simulator Service
- LISA VSE Service

Installation steps to upgrade to DevTest 8.0.2

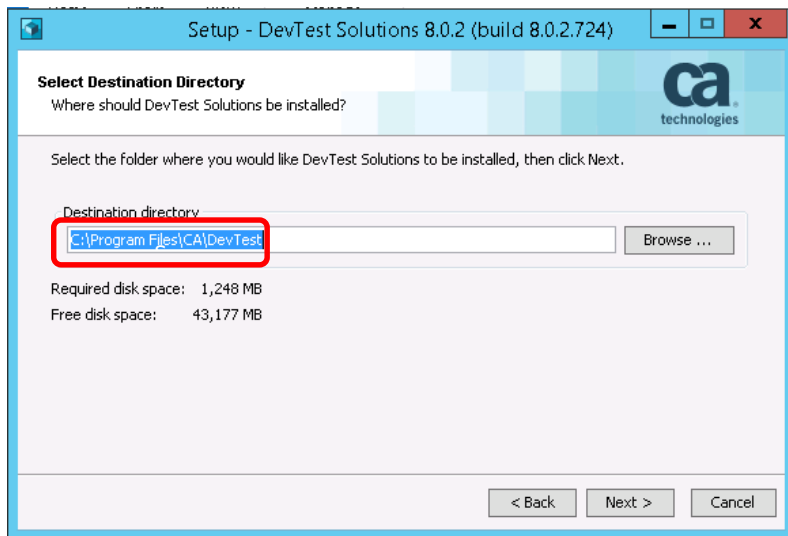
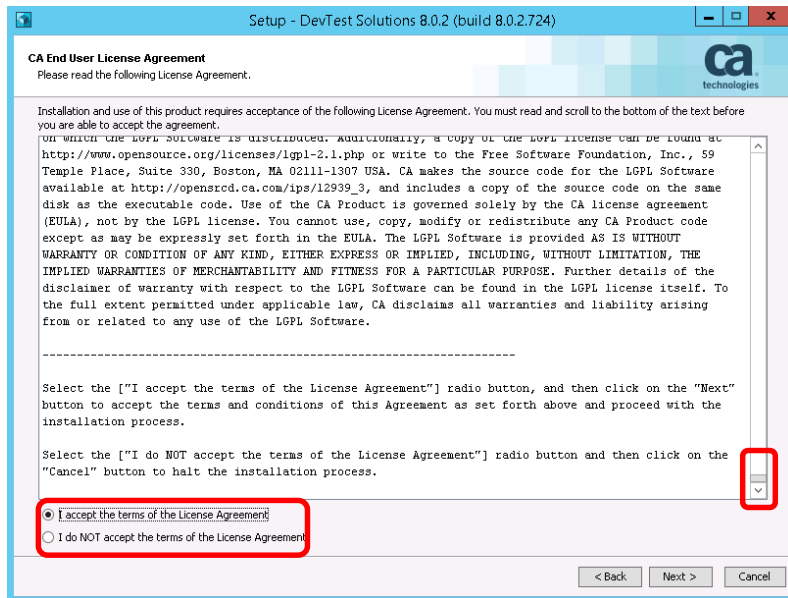
	<p>Double clicking on the DevTest 8.0.2 installer starts the setup wizard.</p>
---	--



The setup wizard guides you through the install procedure, querying for mandatory and optional product settings.



As with other CA products the installer now requires the user to scroll down the entire EULA before being able to accept it.

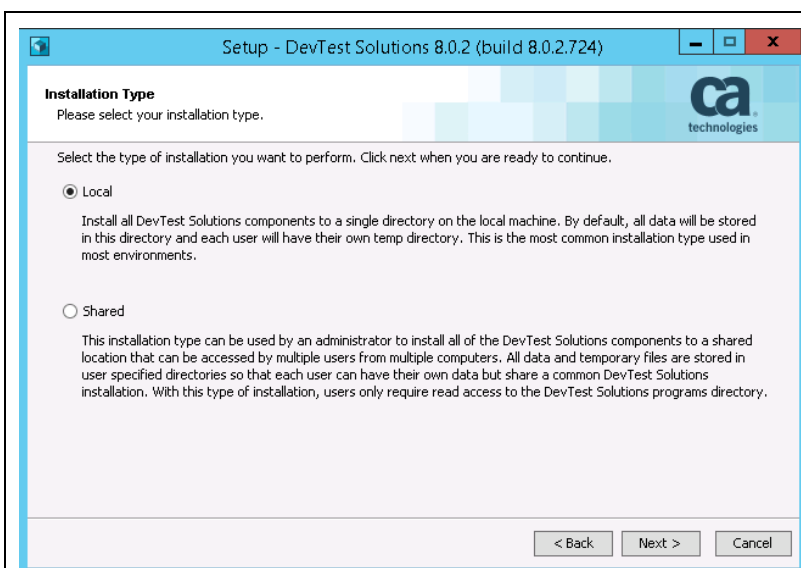


If you have an existing installation of LISA, the installer picks up that path

Make sure that you change the path to the new path as shown

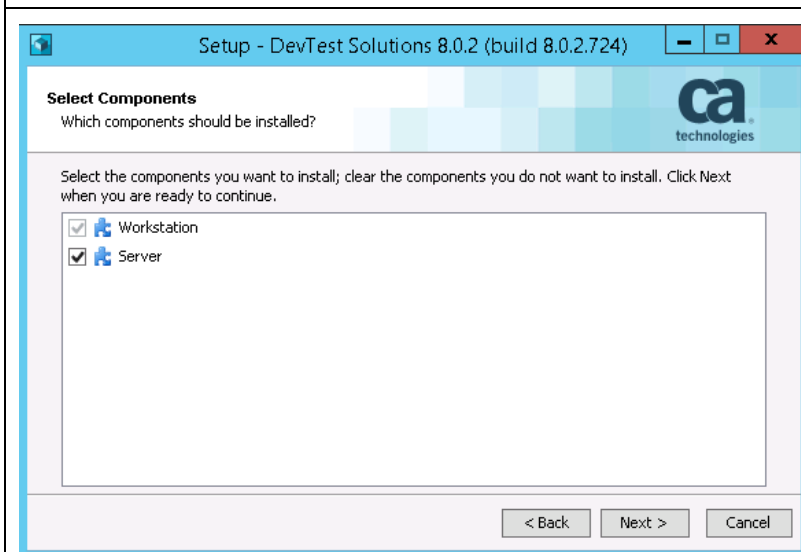
Simply change the LISA to DevTest as shown in the screen

Note: Do Not install over your existing Lisa installation



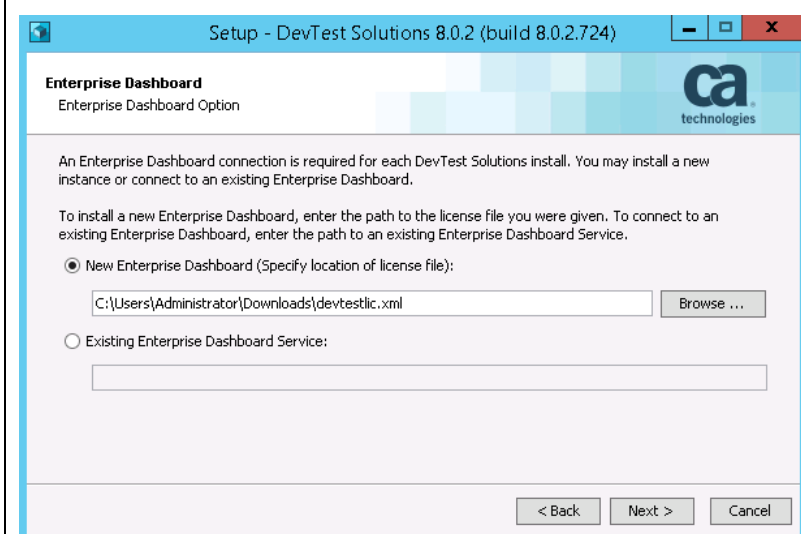
From previous (LISA) releases the options for a local or a shared installation are well known.

If unsure select the local option as this is the most common one used, and is the default setting.



Options are offered to deselect the installation of server components.

The Workstation component can be deselected only if the server component is deselected before. This means the server installation requires a workstation installation.

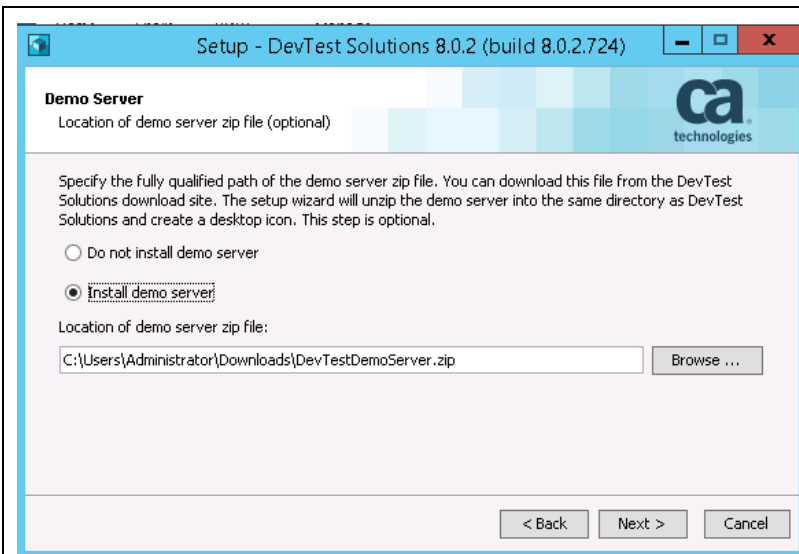


When installing a new Enterprise Dashboard the location of the license key file has to be specified. The installer validates the license file and its content for signature, version and expiration time.

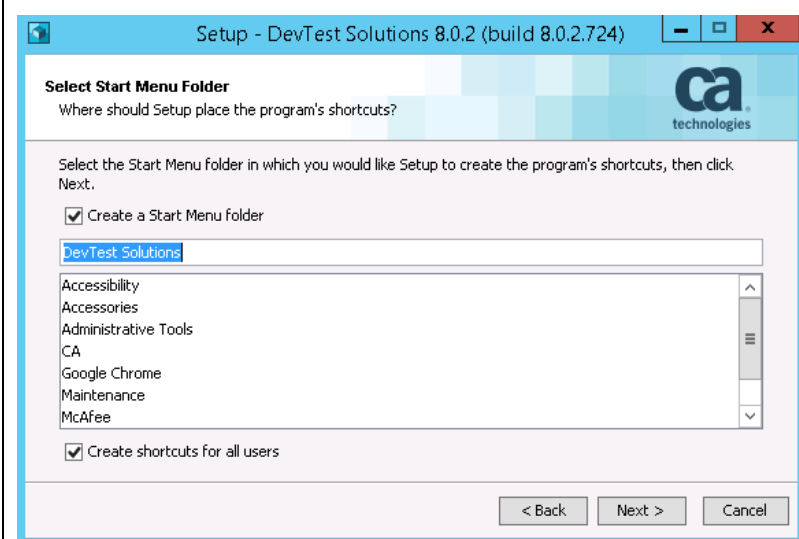
When adding a DevTest component to an existing installation the connection to the existing Enterprise Dashboard service must be specified. A license key file location is not required.

The default setting installs a new Enterprise Dashboard.

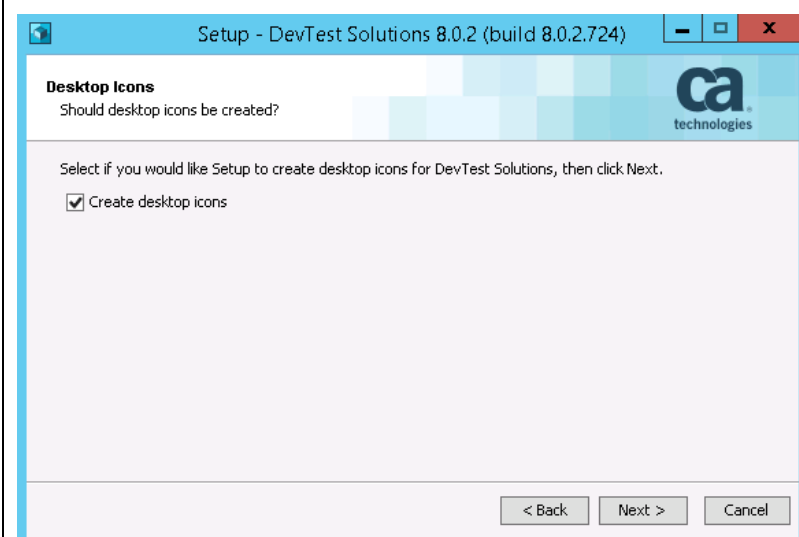
Note: Enterprise Dashboard service that comes with LISA 7.5 will not support DevTest 8.0.2. **DevTest 8.0.2 installations require Enterprise Dashboard service 8.0.2.**



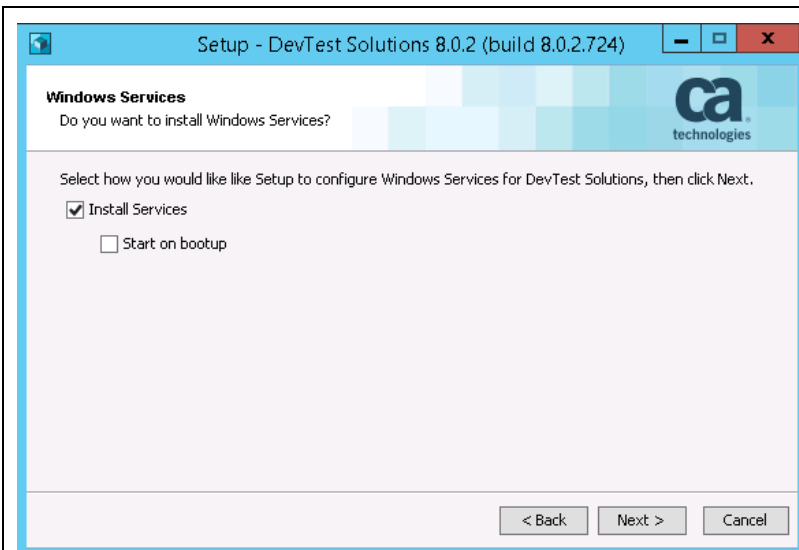
When opting for demo server installation the user must specify the location of the demo server zip file – just as with previous releases.



The installer queries for the name of the Menu Folder for DevTest, and whether or not it will be part of the Windows Start menu and whether or not Menu shortcuts shall be created for all



The next question is about whether or not the user wants to have a desktop icon for DevTest solutions.

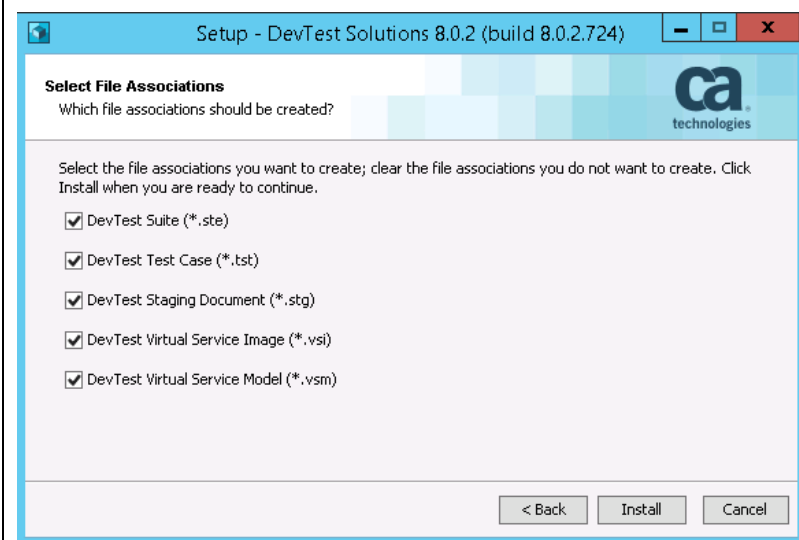


By default the DevTest services are installed as Windows services.

Optionally, the installer can configure the DevTest services for automatic start at system start up.

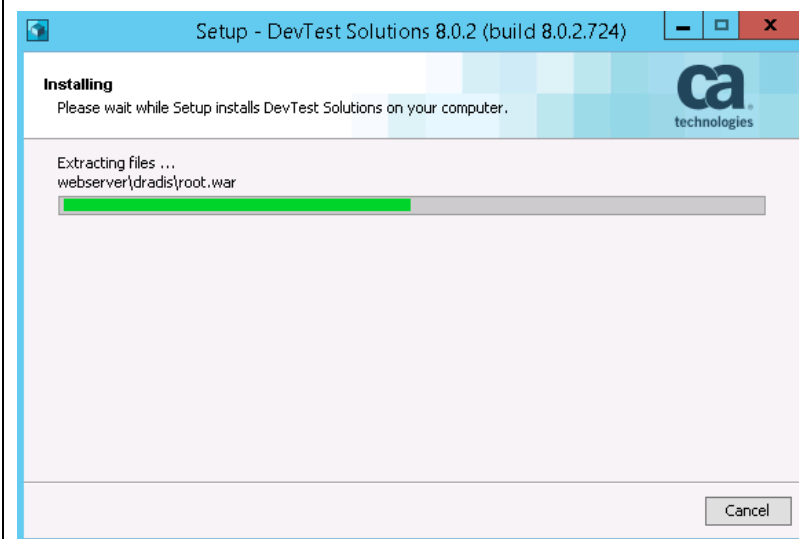
With the default options DevTest services must be started manually.

Note: It is mandatory that after installation the Enterprise Dashboard is started before the Registry Service at least once to synchronize successfully. Therefore it is recommended to use these default options for the initial DevTest installation. This way the user can manually start the Enterprise Dashboard Service prior to the Registry Service. Afterwards the Windows Service startup type for the DevTest Windows services can be set to automatic start on system startup. Enterprise Dashboard Service and Registry Service can then start in any order.

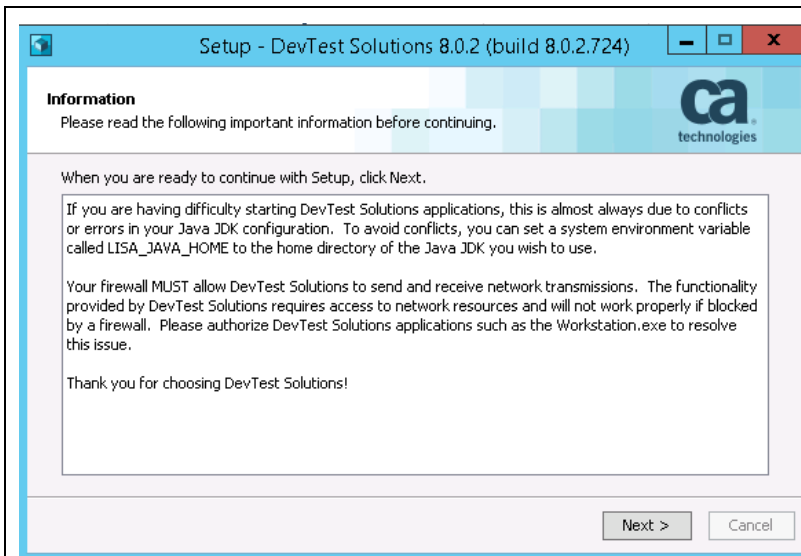


Eventually options are offered to associate file with DevTest solutions.

Clicking on the Install button launches the installation process.

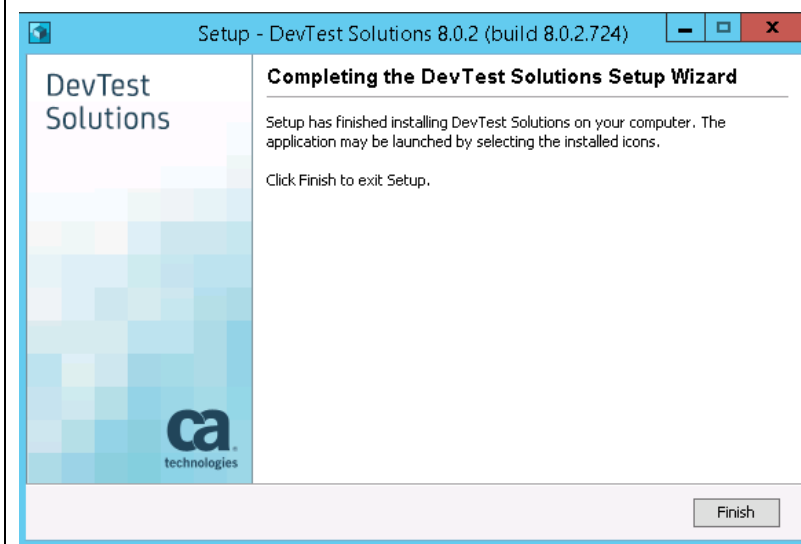


Installation progress is indicated by the progress bar. The installation takes about 6 to 10 minutes to complete.



Once the installation is completed some post install instructions are provided. Please read and follow carefully.

Click Next to finish the installation.

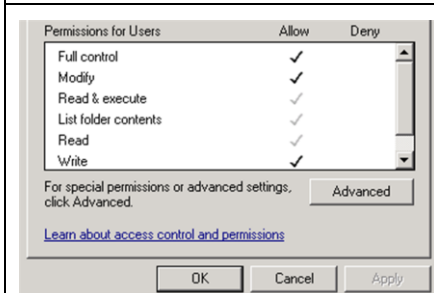


Click Finish to close the Setup Wizard

DevTest Broker Service	Manual	Local System
DevTest Coordinator Service	Manual	Local System
DevTest Enterprise Dashboard Service	Manual	Local System
DevTest Portal Service	Manual	Local System
DevTest Registry Service	Manual	Local System
DevTest Simulator Service	Manual	Local System
DevTest VSE Service	Manual	Local System

After installation, the DevTest Enterprise Dashboard Service must be started first prior to starting DevTest Registry Service(s), which have to register with the Enterprise Dashboard.

Once registered DevTest Registry services can be started without a running DevTest Enterprise Dashboard Service.



Note: Make sure that the **installation directory** (default on Windows: %PROGRAMFILES%\CA\DevTest) is enabled for **Read/Write access for all users**.

Otherwise import of RR Pairs will fail. Reason: the import will store data in the projects folder under {{LISA_HOME}}, which is installed at path under %ProgramFiles%

DevTest Broker	Coordinate...		Manual	Local System
DevTest Coordinator	Receives D...		Manual	Local System
DevTest Enterprise...	Enables th...	Started	Manual	Local System
DevTest Portal	Enables th...		Manual	Local System
DevTest Registry	Provides a ...	Started	Manual	Local System
DevTest Simulator	Runs DevT...		Manual	Local System
DevTest VSE	Enables th...		Manual	Local System

Before starting the Windows services, make sure that the older Lisa (pre-8.0.2) Windows Services are shutdown.

Start the DevTest (8.0.2) services in this order –

- DevTest Enterprise Dashboard
- DevTest Registry

Note that DevTest 8.0.2 includes a new service, DevTest Portal, which should be started last.

Local Disk (C:) > Program Files > CA > DevTest > Search Dev

Name	Date modified	Type
.install4j	4/17/2015 5:40 PM	File folder
addons	4/17/2015 5:38 PM	File folder
agent	4/17/2015 5:31 PM	File folder
bin	4/17/2015 5:38 PM	File folder
database	4/17/2015 5:30 PM	File folder
defaults	4/17/2015 5:31 PM	File folder
DemoServer	4/8/2015 5:41 PM	File folder
doc	4/17/2015 5:30 PM	File folder
examples	4/17/2015 5:31 PM	File folder
examples_src	4/17/2015 5:38 PM	File folder
hotDeploy	4/17/2015 5:40 PM	File folder
incontainer	4/17/2015 5:31 PM	File folder
jre	4/17/2015 5:30 PM	File folder
lib	4/17/2015 5:31 PM	File folder
licenses	4/17/2015 5:31 PM	File folder
lisatmp_8.0.2	4/17/2015 5:40 PM	File folder
locks	4/17/2015 5:40 PM	File folder
Projects	4/17/2015 5:31 PM	File folder
reports	4/17/2015 5:03 PM	File folder
searchData	4/17/2015 5:31 PM	File folder
snmp	4/17/2015 5:31 PM	File folder

Verify that the lisatmp folder is created

This is if DevTest is started as (Windows) services. If started as regular applications from cmd line lisatmp_8.0.2 is under %USERS%\<user>

localhost:1506

Enterprise Dashboard v8.0.2 (8.0.2.724)

Product Info > Support > Education > Communities > Options >

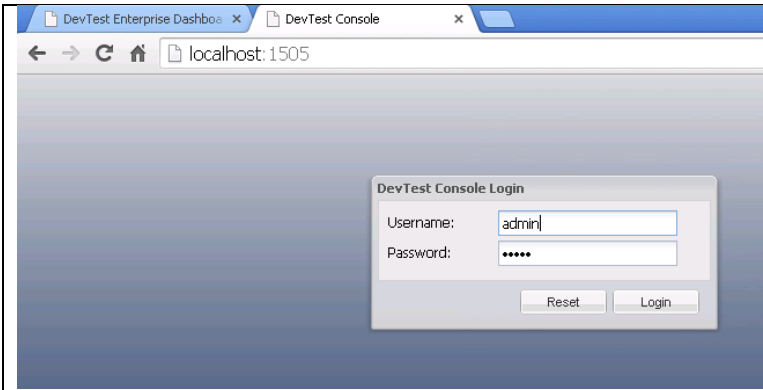
Overview

Registry	Name	Status	Version	Coordina...	Simulators	VSEs	Workstat...	Agents	Leads	DevTest Console URL
Registry	Registry@beartool-14145704.ca.us	Running	8.0.2 (8.0.2.724)	0	0	0	0	0	1	http://beartool-14145704-15...

Verify that the Enterprise Dashboard and the Registry are able to communicate and that the license is verified

Go to the Enterprise Dashboard URL (port 1506) and verify that you can see the Registry for DevTest 8.0.2

Then verify that you can login to the DevTest Console (port 1505) and login as admin/admin

	
	<p>DevTest Portal Service must be started to enable access by DevTest Web UI.</p> <p>DevTest Broker Service must be started to enable Application Insight functionality.</p>

At this point, the installation of DevTest 8.0.2 is complete. The next section will focus on the Post installation tasks

Chapter 5: Post-Installation Tasks

Configuring DevTest 8.0.2

This section will focus on configuring this DevTest installation similar to your existing LISA environment

Create a new database for DevTest 8.0.2

- As mentioned earlier, database upgrade is not supported. As a result, you will have to create a new database which DevTest 8.0.2 will then use.
- For example, say you are using SQL Server, then you could create a new database called as DevTest8 from the SQL Server Management Studio and assign your existing database user (that you use for the prior Lisa versions) to it
- This new database will then be used when updating the site.properties file in the next step
- Enterprise Dashboard uses its own, independent database. It has independent configuration located in the local.properties file on the Enterprise Dashboard server. It does not leverage site.properties because it does not make sense to push Enterprise Dashboard database properties to all the peripheral components under the registry as it is only accessed by the Enterprise Dashboard service itself.

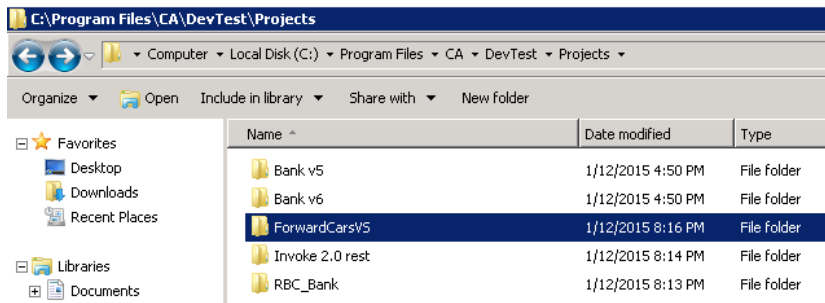
Update the .properties files

- In the new installation inside the C:\Program Files\CA\DevTest folder, there will be _local.properties and _site.properties files. Please make a copy of these files and save them as local.properties and site.properties files
- From your older Lisa installation, open the following files and copy/paste the relevant information to the newer properties files that were created in the previous step
 - o local.properties file
 - o site.properties file
 - Note – For this file, your copied information will point to the database that your older Lisa installation was using. You need to update the entry of the database name to the newer database that you created in the previous step.
- By doing the above, you have added your custom information from the two properties files into the newer information. Such information could be (but not limited to) from the following –
 - o External Database configuration
 - o Proxy information
 - o SSL configuration
 - o Enable/disable Continuous Application Insight
 - o Enable/disable internal Derby database

Copy the Lisa assets

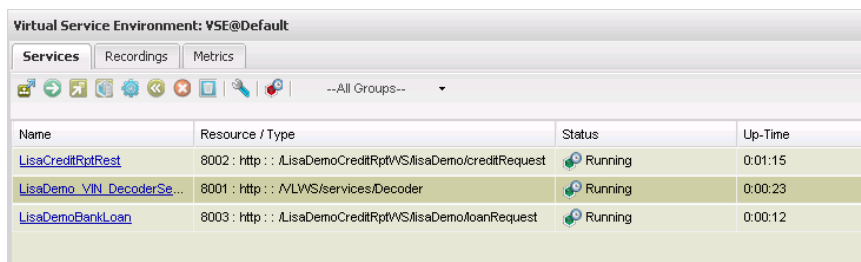
Application Test projects/tests

- Copy your Application Test (a.k.a. Lisa Test) projects from your older Lisa installation folder to the new Projects folder in the LISA_HOME folder in your newer installation. This new Projects folder already contains two OOTB projects namely
 - o Bank v5
 - o Bank v6



Virtual Services

- Take a backup of the current vseDeploy folder (if any) in the C:\Program Files\CA\DevTest folder and rename it to another name
- Copy the vseDeploy folder from your previous installation into the C:\Program Files\CA\DevTest folder.
- From Windows Services – start the DevTest VSE service
- Login to the DevTest Console and then select the Server Console → VSE



In your case, you should see your Virtual Services deployed and running. The screenshot shows a bunch of Virtual Services as a sample only and you might not have those in your environment.

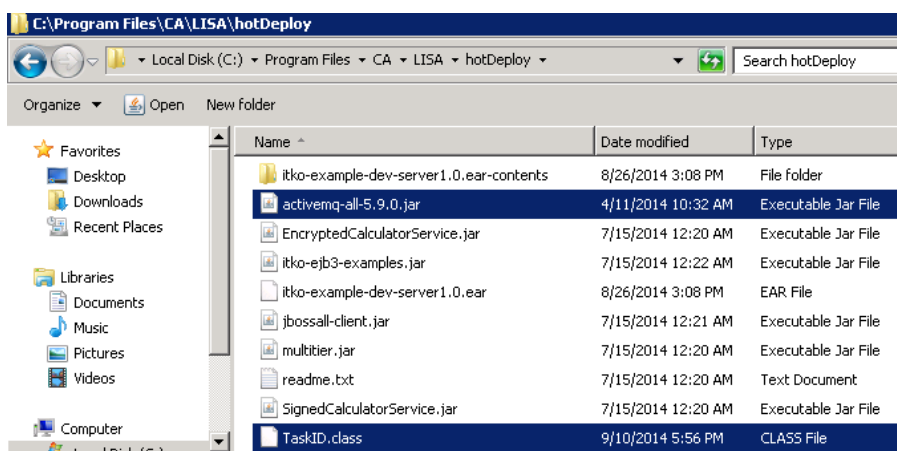
Migration of Lisa assets from 6.x to DevTest 8.0.2

Note: This section applies only if you have Lisa 6.x. If you have Lisa 7.x and above, please skip this section.

Starting from Lisa 7.x there were some XML schema changes that validates Test Cases. For these Test Cases to work with DevTest 8.0.2, they should be run using the TestRunner.exe command line tool. When this tool runs, it converts the Test Cases and makes them compatible with DevTest 8.0.2.

Custom Extensions

- Copy your custom extensions from the C:\Program Files\CA\LISA\hotDeploy folder to C:\Program Files\CA\DevTest\hotDeploy folder.
- In this case, here are 2 custom extensions from the older Lisa installation



- Copy those 2 custom extensions to the C:\Program Files\CA\DevTest\hotDeploy folder

Important Note about Custom Extensions

The only Java release that DevTest 8.0.2 supports is Java 7. If your custom extensions were written using Java 7 then they should work seamlessly with this release. If the custom extensions were written using any prior Java versions like 5 or 6 then they will have to be compiled using DevTest 8.0.2 files. If your custom extensions do not work, please determine the version of Java that was used to compile them. If this was any version prior to Java 7 then you will have to open your extensions in your Java IDE and then re-compile them with Java 7 using the corresponding DevTest 8.0.2 jar files.

DevTest 8.0.2 comes with Java JRE 1.70_72, located at {{LISA_HOME}}\jre.

CVS Monitors

- If you have any CVS monitors from the older Lisa release, they will have to be recreated in DevTest 8.0.2. Upgrading previous CVS monitors is not supported.

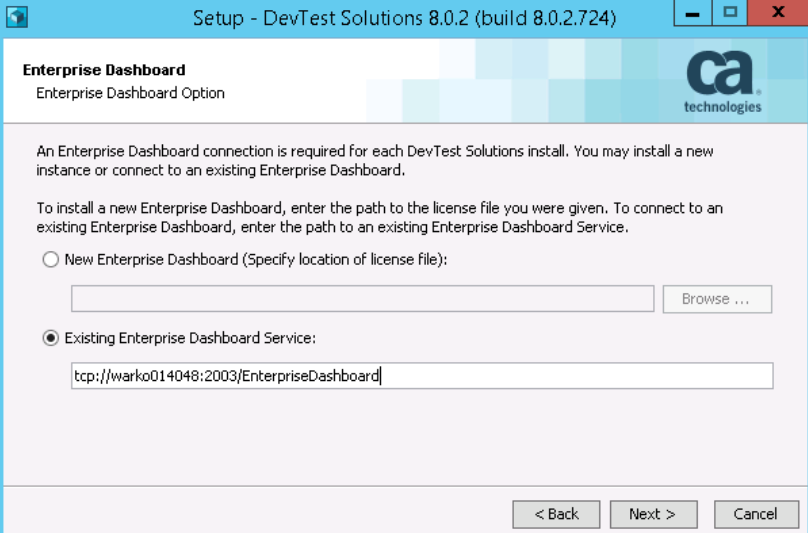
Chapter 6: Remote Components

In this section, we will cover briefly information on upgrading remote DevTest components. Depending on your existing Lisa environment, you might need to upgrade the remote components to the latest DevTest release

Probable Remote Components list

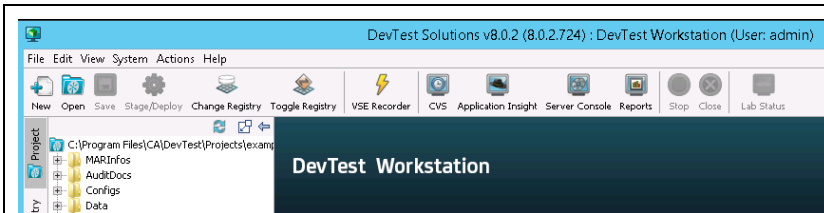
- DevTest Coordinator
- DevTest Simulator
- DevTest VSE

Upgrading the remote components

	<p>Copy the DevTest installer to the remote machine where you currently have a Lisa component installed.</p> <p>Start the installer and this time point it to the remote Enterprise Dashboard Service that was installed earlier in this document as shown below</p> <p>As with the prior installation, select the installation location as C:\Program Files\CA\DevTest</p> <p>Complete the installation</p>
<pre>##### ### ### SECTION 2 - AUTOCONNECTION ### ##### #lisaAutoConnect=tcp://warko014048:2010/Registry lisa.registry.url=tcp://warko014048:2010/Registry</pre>	<p>Make a copy of the _local.properties file and name it local.properties file</p> <p>Now open your older local.properties file and copy the relevant information to the new local.properties file</p> <p>An important step here would be to change the Registry information similar to what is shown</p> <p>Start the DevTest Simulator service from the Windows Services</p>
	<p>Similarly you can install any other remote components to talk to the Registry in your environment.</p>

Chapter 7: Verifying Installation

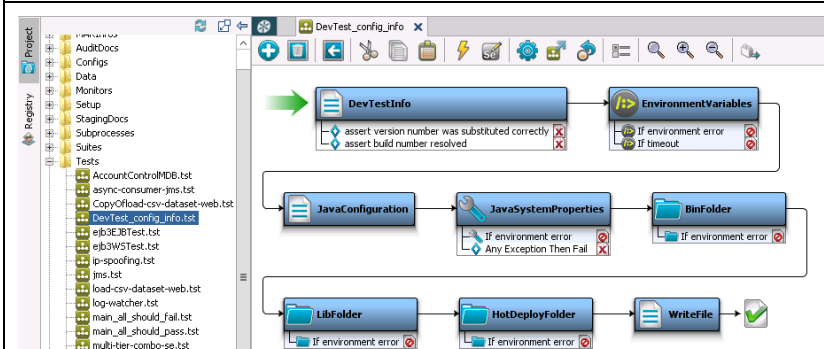
DevTest Workstation



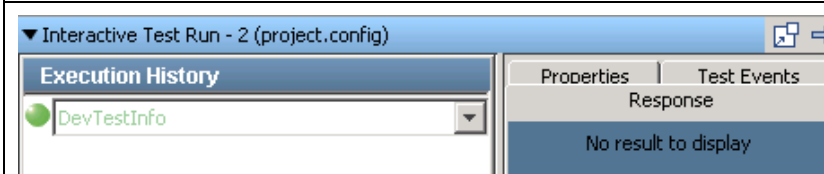
From the shortcut on the desktop, open the DevTest Workstation


Login as admin/admin

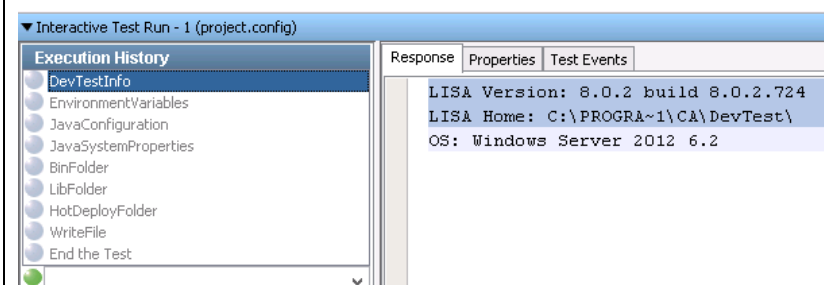
The Examples project opens by default








Expand the Tests folder and double-click to select and open the DevTest_config_info.txt test



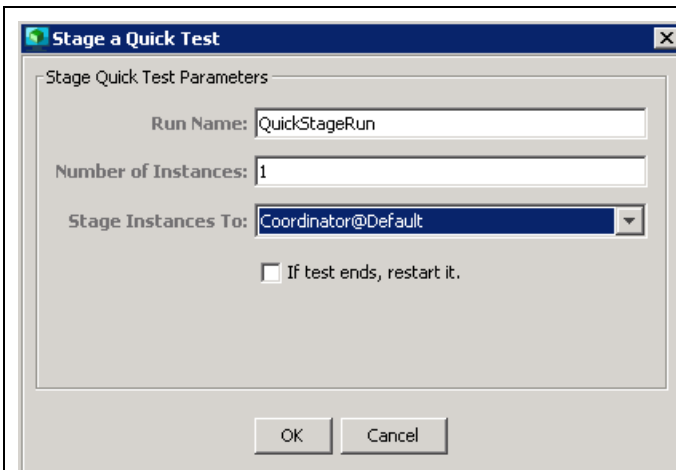
Click on the 'ITR' button to open the ITR panel. Execute this test by clicking the icon 



This test should complete successfully. You can click on the various steps in the Execution History to view the response received.

	DevTest Coordinator	Receives D...	Started	Manual	Local System
	DevTest Enterprise...	Enables th...	Started	Manual	Local System
	DevTest Portal	Enables th...	Started	Manual	Local System
	DevTest Registry	Provides a ...	Started	Manual	Local System
	DevTest Simulator	Runs DevT...	Started	Manual	Local System

From the Windows Services- start the DevTest Simulator and DevTest Coordinator services



In the DevTest Workstation, right click the DevTest_config_info.txt test and select *Stage a Quick Test*

Select the values as shown and click OK

Note: Remember to select the Coordinator.


Timestamp	Event	Simulator	Instance	Short Info	Long Info
2015-02-06 15:14:07,562	Test ended		Q/0	9E3631D4AE3C11E490...	
2015-02-06 15:14:07,193	Instance ended	tcp://wark001-VM63159:2014/Simulator	Q/0	N/A	N/A
2015-02-06 15:14:07,192	Cycle ending	tcp://wark001-VM63159:2014/Simulator	Q/0	AD6A24ADA3C11E4A...	Signaled to stop test
2015-02-06 15:14:07,089	Cycle ended normally	tcp://wark001-VM63159:2014/Simulator	Q/0	AD6A24ADA3C11E4A...	N/A
2015-02-06 15:14:07,055	Step response time	tcp://wark001-VM63159:2014/Simulator	Q/0	WriteFile	174
2015-02-06 15:14:05,882	Step response time	tcp://wark001-VM63159:2014/Simulator	Q/0	HotDeployFolder	273
2015-02-06 15:14:04,579	Step response time	tcp://wark001-VM63159:2014/Simulator	Q/0	LibFolder	903
2015-02-06 15:13:56,184	Cycle started	tcp://wark001-VM63159:2014/Simulator	Q/0	AD6A24ADA3C11E4A...	
2015-02-06 15:13:55,994	Test started	N/A	Q/0	9E3631D4AE3C11E490...	N/A

In the QuickStageRun tab, you will see the results of the executing steps in the test. The test should complete successfully.

This test was staged and used the Coordinator and the Simulator for its execution

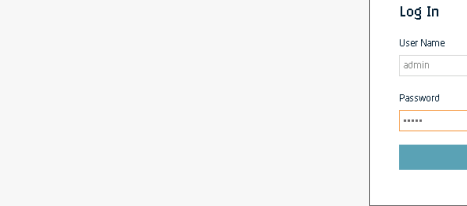
DevTest Portal

This component is a great new addition to the various consoles in DevTest 8.0.2.



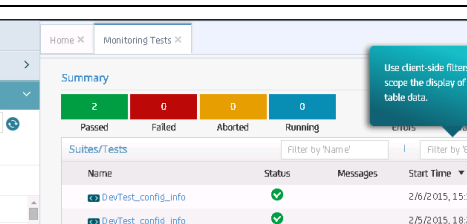
Start the DevTest Portal service from Windows Services

Start the DevTest Portal service from Windows Services



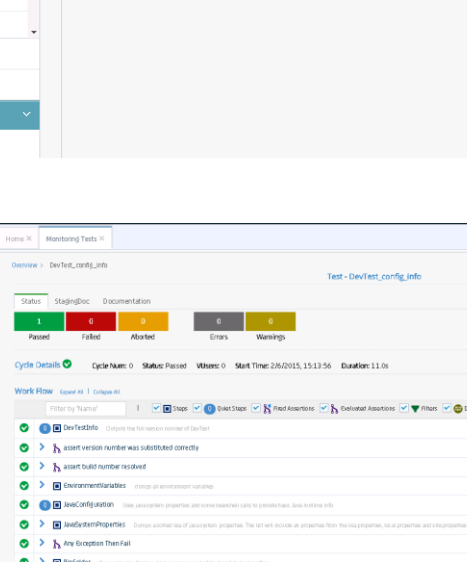
Once the service starts, wait for about 3-5 minutes (for the first time only). Then go to the DevTest Portal UI at port 1507

Login as admin/admin



Click on the Monitor tab and then on the Monitoring Tests. You should see your test(s) as passed.

Click on the Monitor tab and then on the Monitoring Tests. You should see your test(s) as passed.



To get more information on the Test Case, click on the Name link of the test case to drill down into the details.

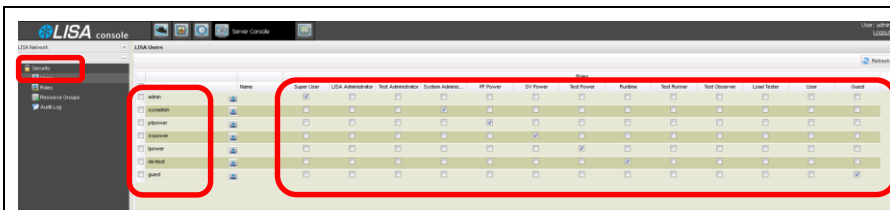
Chapter 8: Appendix

User Administration

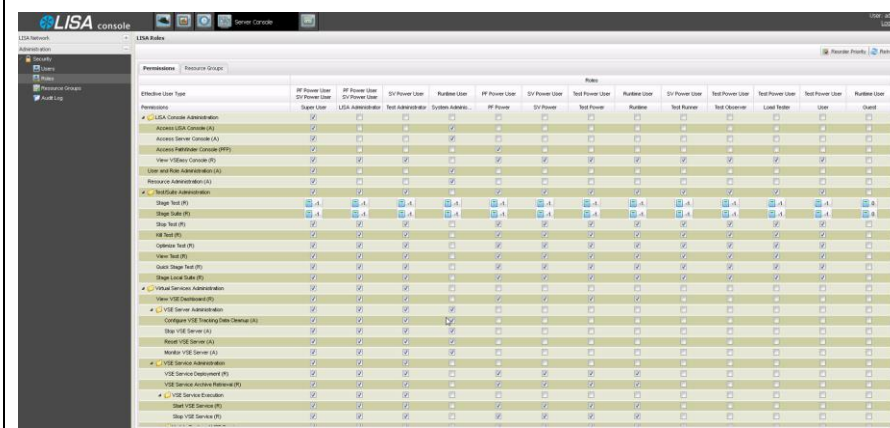
With DevTest 8.x ACL is activated. For your convenience, sample users have been predefined for any available role in DevTest 8.x. The default password for each user ID is the user name (e.g., admin/admin; devtest/devtest; and so on). Change these passwords as per policy.

Default users:

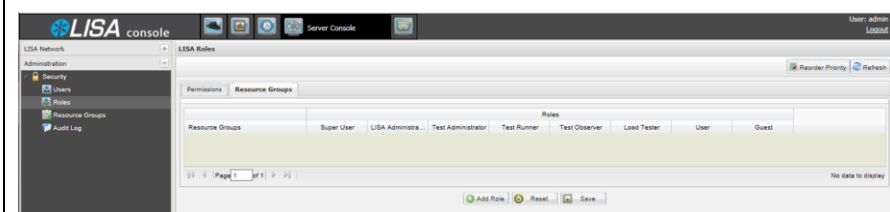
- admin – super user, DevTest Administrator, all privileges
- sysadmin – System Administrator, runtime user, configures resources, starts/stops services
- pfpower – Application Insight power user
- svpower – Service Virtualization power user
- tpower – Application Test power user
- devtest – run test cases, deploy virtual services, create reports, etc.
- guest – can start DevTest Workstation and view test cases and suites



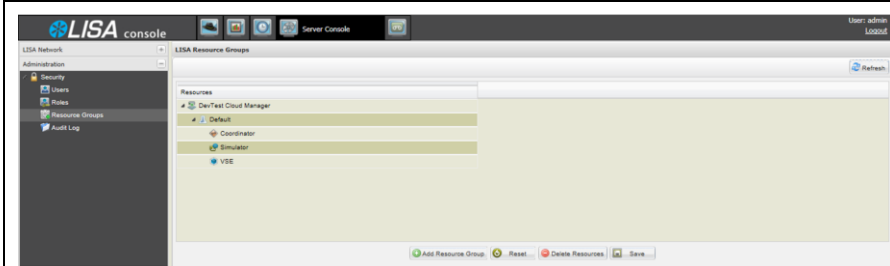
Several user IDs are predefined with selected privileges. Of course, other users with custom privilege settings can be configured.



For specifying privileges of a user role over 90 different controls are available to choose from. 813 standard user roles are predefined and available to assign to user ids.



For user roles access to resources can also be restricted via the 'Resource Group' tab.



Resources and resource groups are defined in the 'Resource Group'.

Please refer to the official DevTest 8.0.2 documentation on more information on ACLs.