

Yesterday, Today &  
Tomorrow – How CA  
Mainframe Chorus can  
work for you!



agility  
made possible™



# Agenda

Overview of CA Mainframe Chorus

Underlying components of CA Mainframe Chorus for Security and Compliance

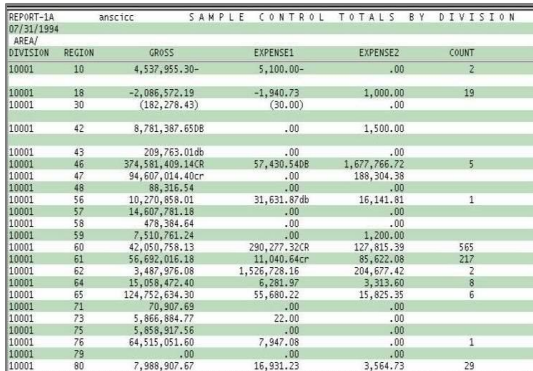
Things you can implement today to prepare you for tomorrow.

Chorus as a platform and not just a security tool.

Q & A

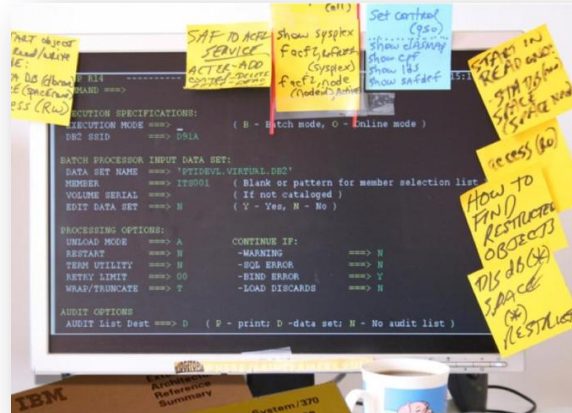
# Overview

# Integrated Workspace

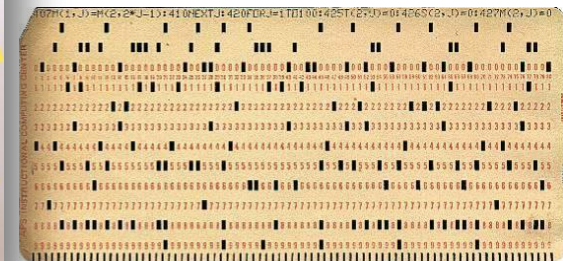


# Robust Reporting

## Rich Visualization

[illegible]

## Knowledge & Collaboration

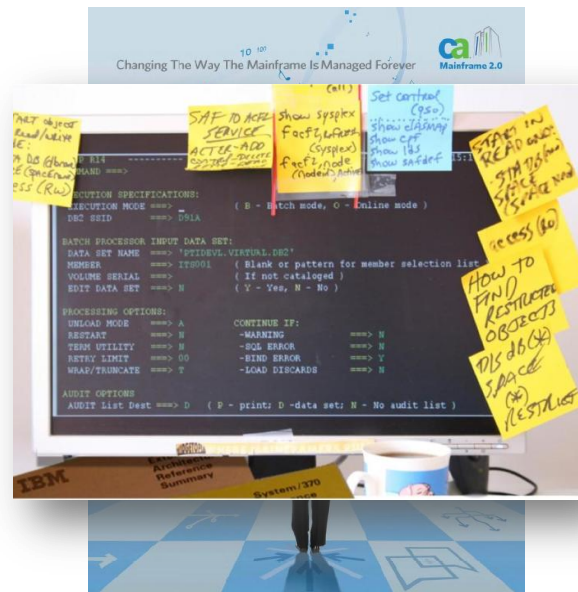


# Process Automation

## Next Generation Mail Management Benefits...

# Integrated Workspace

## Rich Visualization



# Robust Reporting

## Knowledge & Collaboration

# Process Automation

# New skills requirements emerging an ever-changing landscape

## ENVIRONMENTS WILL CONTINUE TO CHANGE

...probably at an  
accelerating rate...

## NEW MANAGEMENT ISSUES WILL EMERGE

...complexity vs.  
skills and business  
knowledge transfer...



## ENABLE THE NEXT- GENERATION MAINFRAMER

...Ambidextrous  
workforce skills,  
team alignment, &  
need for faster  
ramp-up...

## HYBRID ENTERPRISES DEMAND SIMPLIFIED TOOLS

...New requirements  
for hybrid  
environments...


## DYNAMIC WORK ROLES

...breakdown silos of  
traditional roles and  
responsibilities...



# Modernize Mainframe Management: Empower the Hybrid IT Workforce

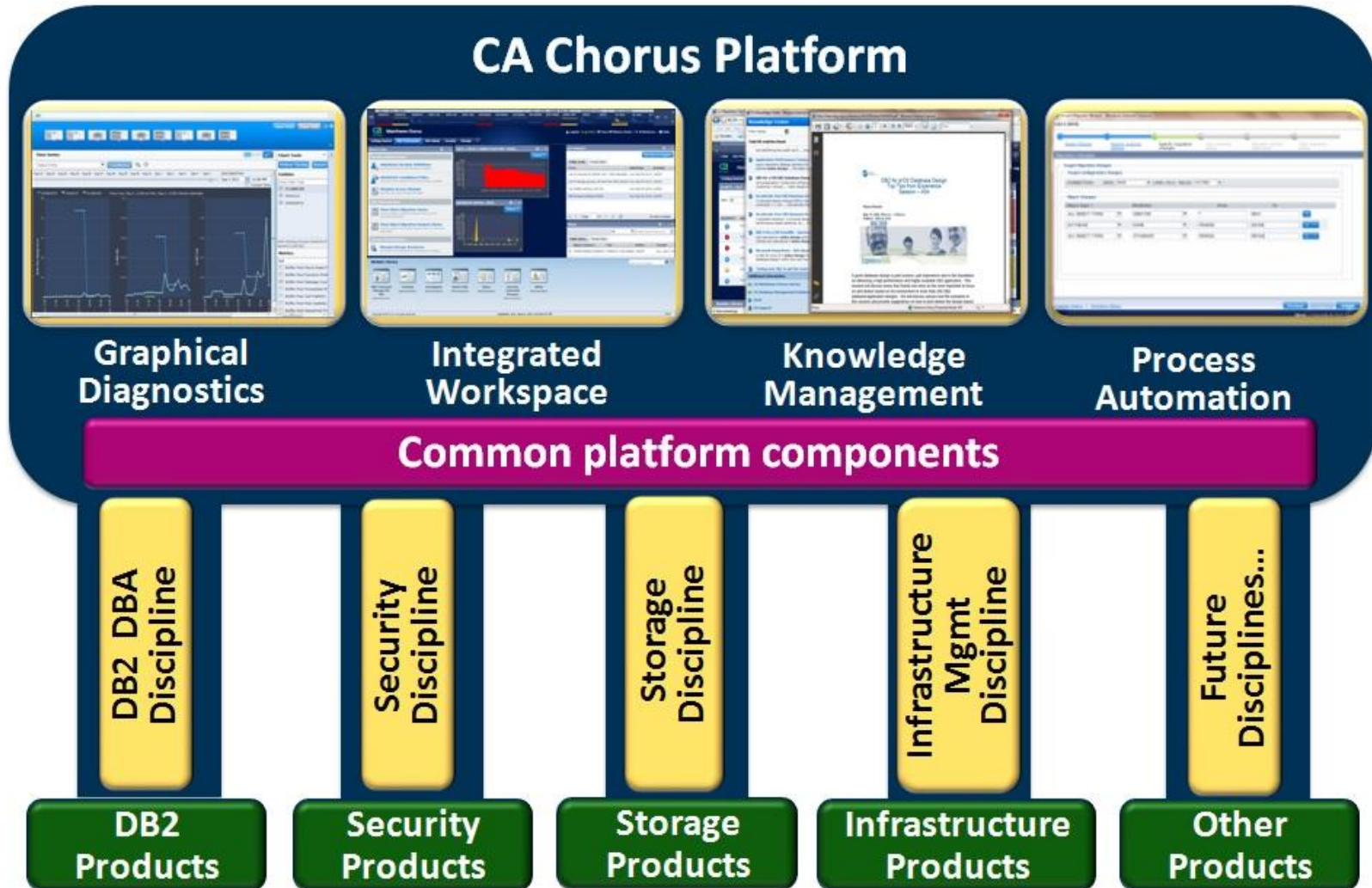
1. Enable next-generation mainframer & hybrid IT worker
2. Capture and transfer expert knowledge
3. “Net Generation” thinks and works differently
4. Demands a new approach with modern technology



Pioneers  
of IT

Next  
Generation

# CA Mainframe Chorus Architecture



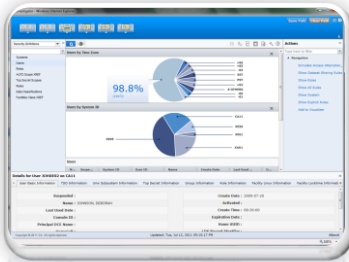


# CA Mainframe Chorus *an overview...*



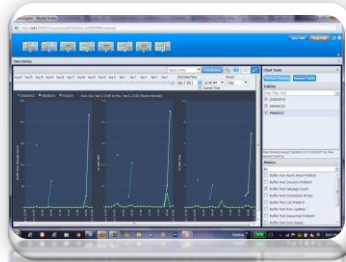
## Integrated Workspace

- Singular interaction model
- Fast Learning Curve



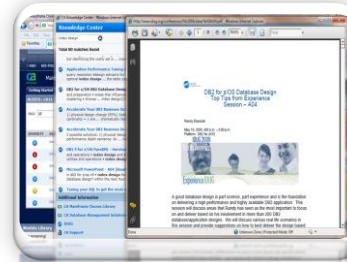
## Role-Based Navigation

- Matches Job Functions
- Leverage resources across platforms



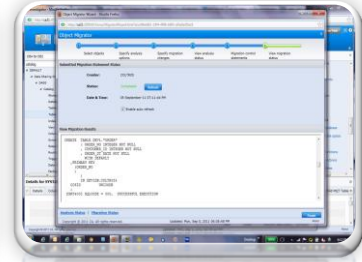
## Graphical Diagnostics

- Data in human readable formats
- Solve problems faster



## Knowledge Management

- Community knowledge and expertise at users fingertips
- Increases the whole team's efficiency



## Process Automation

- Wizard-like process tools
- Reduces possibility of errors

# CA Mainframe Chorus Workspace

CA11 :: DF1G :: EXCPT

SUBSYS- SUBSYS- SUBSYS- APPL-CR APPL-IN APPL-WA DATABAS DATABAS DATABAS

CA11 :: DF1G :: BUFFER POOL: BP0


BP-WARN GET-PAGE READ-EFF

RACROUTE AUTHS

DE29 DE30

DE29 IO STATS

IO Stat IO Stat IO Stat

 **Mainframe Chorus**

coltr05 (Log Out) | Turn Off Metrics Panel | Preferences | Help

Getting Started DB2 Performance DB2 Admin Security Storage +

Quick Links

Security Administration

Administer Security Definitions

Launches the Security Administration interface

Administer Compliance Policy

Launches the Compliance Policy Administration interface

Simulate Access Attempt

Launches the Access Attempt Simulator

DB2 Administration

View Object Migration Status

Lists the status of migration requests that you have previously submitted.

View Object Migration Analysis Status


Lists the status of all analysis requests that you previously submitted.

Storage Administration


Manage Storage Resources

Launches the Storage Resource Management interface.

CA11 :: DF1G :: Buffer Pool: BP0 : READ...



RACROUTE AUTHS : DE29



Investigator

Start New Investigation

Public Paths Private Paths

| TITLE   | MODIFIED         | AUTHOR  |
|---|------------------|---------|
| List of volumes for SYSDA with < 50% allocated      | Sun Sep 04 16:10 | coltr05 |
| List of storage groups with less than 50% allocated | Sun Sep 04 16:07 | coltr05 |
| List USERS starting with COL                        | Sun Sep 04 16:02 | coltr05 |
| IBM Sample Database DSN8                            | Sun Sep 04 15:25 | coltr05 |

Page 1 of 1

No data to display

Notes

Public Notes Private Notes

| Object Instance       | Text                    | Author  | Created          |
|-----------------------|-------------------------|---------|------------------|
| SYSDATABASE (DSNRLST) | DSNRLST is the database | coltr05 | Sun, Sep 4, 2011 |

Module Library

DBA Command Manager for DB2 Administration

Tutorials Administration

Investigator Administration

Quick Links Administration

Notes Administration

Security Command Manager Administration

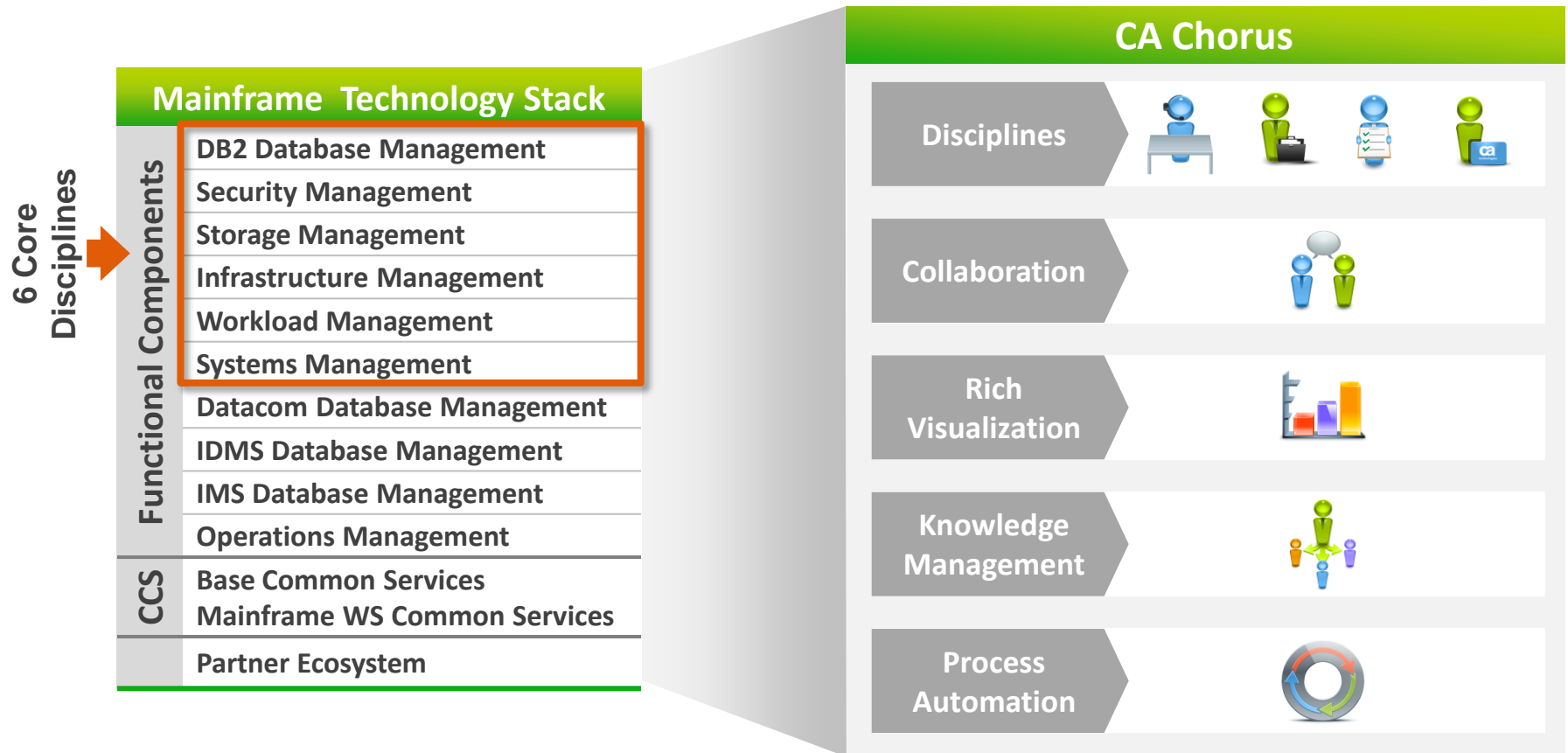
Alerts Administration

Copyright © 2011 CA. All rights reserved. CA confidential. Covered by NDA. No unauthorized copying or distribution permitted. All trademarks, trade names, service marks and logos referenced herein belong to their respective companies.

# Improve staff efficiency

## CA Chorus vision

Object-oriented workspace, with a new discipline-based interaction model that incorporates rich features and data visualization and leverages CA Technologies portfolio of products as a single bank of features and functions



# Underlying components for Security and Compliance Discipline

# Chorus for Security and Compliance Management

## INVESTIGATOR

- Drill-down capabilities to speed mean time to repair

## VISUALIZER

- Visualize relationships like systems, users, roles, etc

## TIME SERIES

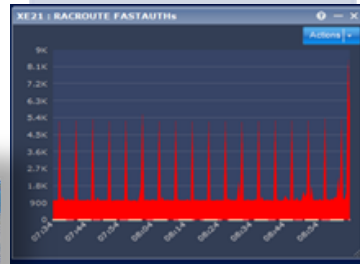
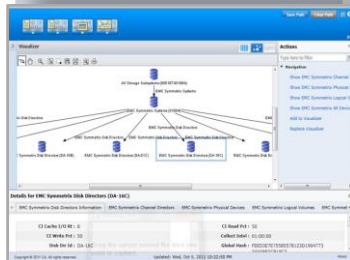
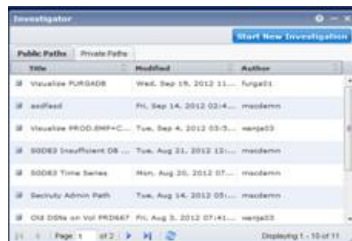
- Historical view of data and trends

## ALERTS

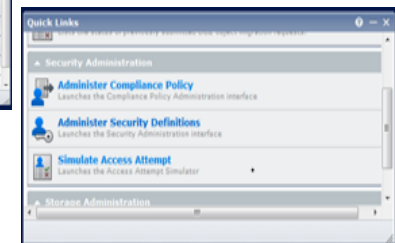
- A single role view of actionable event information

## QUICK LINKS

- Direct connections to other components like Compliance Manager policy UI, the Web Admin UI, and a new access simulation UI



| Event   | User    | Message            | Severity | Time         |
|---------|---------|--------------------|----------|--------------|
| SIGONON | MSCDEMN | Userid MSC... XE21 | High     | Mon Sep 3... |
| SIGONON | MSCDEMN | Userid MSC... XE21 | High     | Mon Sep 3... |
| SIGONON | MSCDEMN | Userid MSC... XE21 | High     | Mon Sep 3... |
| SIGONON | MSCDEMN | Userid MSC... XE21 | High     | Mon Sep 3... |
| SIGONON | MSCDEMN | Userid MSC... XE21 | High     | Mon Sep 3... |
| SIGONON | MSCDEMN | Userid MSC... XE21 | High     | Mon Sep 3... |
| SIGONON | MSCDEMN | Userid MSC... XE21 | High     | Mon Sep 3... |
| SIGONON | MSCDEMN | Userid MSC... XE21 | High     | Mon Sep 3... |
| SIGONON | MSCDEMN | Userid MSC... XE21 | High     | Mon Sep 3... |
| SIGONON | MSCDEMN | Userid MSC... XE21 | High     | Mon Sep 3... |



# Underlying components for Security and Compliance

|                                  | <i>Knowledge Center</i> | <i>Investigator</i> | <i>Time Series</i> | <i>Security Command Mgr</i> | <i>Quick Links</i> | <i>Notes</i> | <i>Alerts</i> |
|----------------------------------|-------------------------|---------------------|--------------------|-----------------------------|--------------------|--------------|---------------|
| <b>CA ACF2 and CA Top Secret</b> |                         |                     |                    |                             |                    |              |               |
| CIA database                     | ✓                       | ✓                   |                    |                             |                    | ✓            |               |
| Admin                            | ✓                       |                     |                    |                             | ✓                  |              |               |
| Security command line*           | ✓                       |                     |                    | ✓                           |                    |              |               |
| ACFTTEST/TSSSIM                  | ✓                       |                     |                    |                             | ✓                  |              |               |
| STATG                            | ✓                       | ✓                   | ✓                  |                             |                    |              |               |
| <b>Compliance Manager</b>        |                         |                     |                    |                             |                    |              |               |
| Policy*                          | ✓                       |                     |                    |                             | ✓                  |              |               |
| Events*                          | ✓                       | ✓                   |                    |                             |                    | ✓            |               |
| Alerts*                          | ✓                       |                     |                    |                             |                    |              | ✓             |

\* Includes support for RACF



Headed the Chorus way? Things you can start doing today to plan for tomorrow

# Things you can do now...

LDAP/LDS/DSI



```
graph TD; A[LDAP/LDS/DSI] --> B[CIA]; B --> C[Data Classification]; C --> D[DB2 and/or Datacomm/AD support]; D --> E[For a complete list of all pre-requisites visit www.support.ca.com];
```

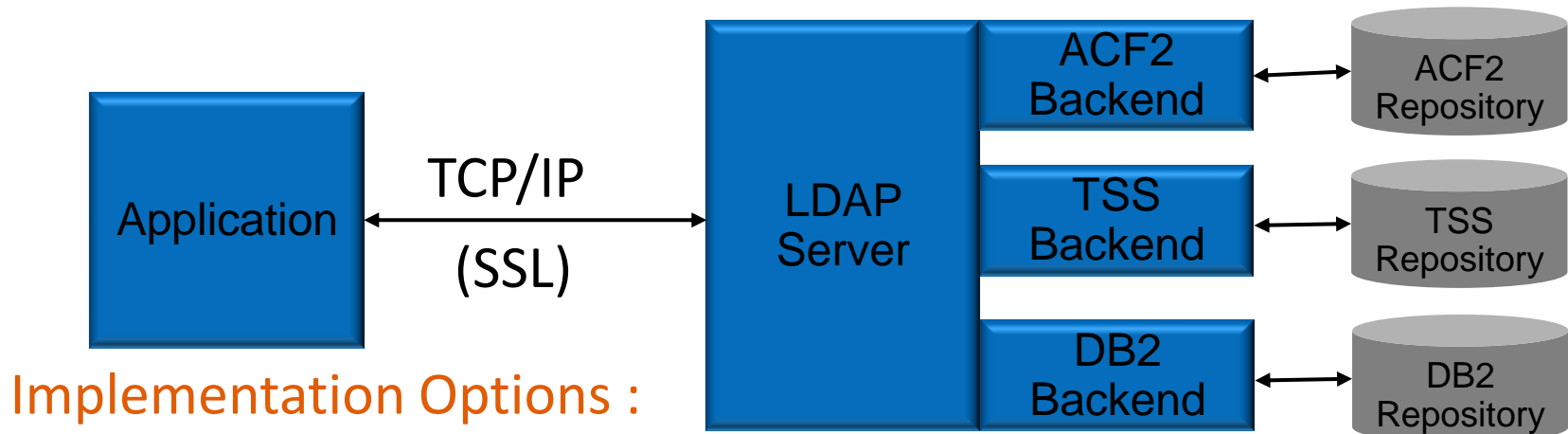
CIA

Data Classification

DB2 and/or Datacomm/AD support

For a complete list of all pre-requisites visit  
[www.support.ca.com](http://www.support.ca.com)

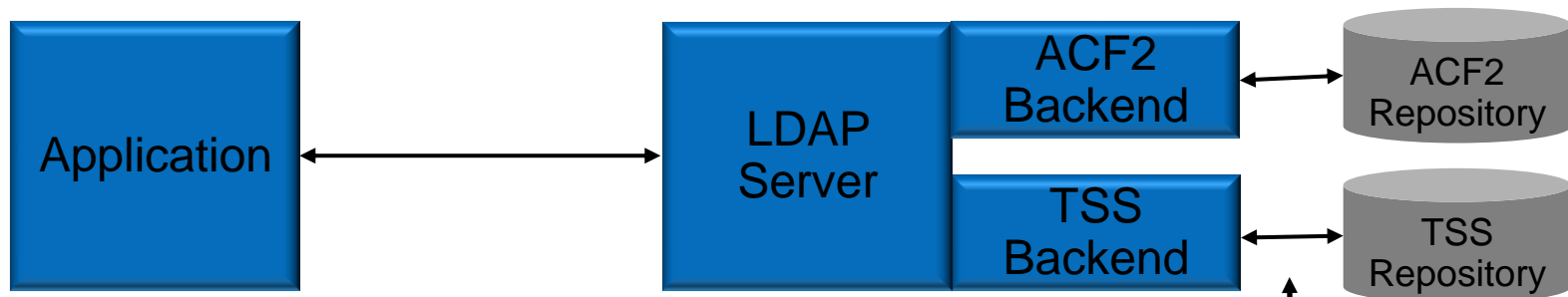
# CA LDAP Server Architecture



## Implementation Options :

- Just one interface (ACF2 or TSS) or both
  - Anything that uses LDAP protocol
  - Configurable objects/search filters
- DB2 option for non-security objects
- Uses System SSL
  - Hardware crypto/FIPS support

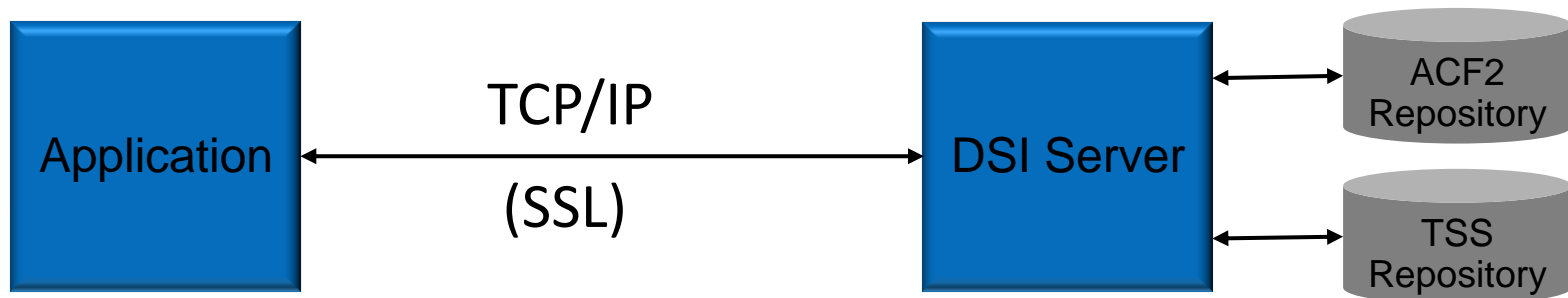
# Interaction with the ESM



Callable service, `R_admin()` :

- Gives command to CA ACF2 or CA Top Secret to execute
  - No different than issuing at a TSO prompt
  - ESM will determine if you are authorized (scoped)
- LDAP never has direct access to the security file
  - No copy of the data to maintain or sync

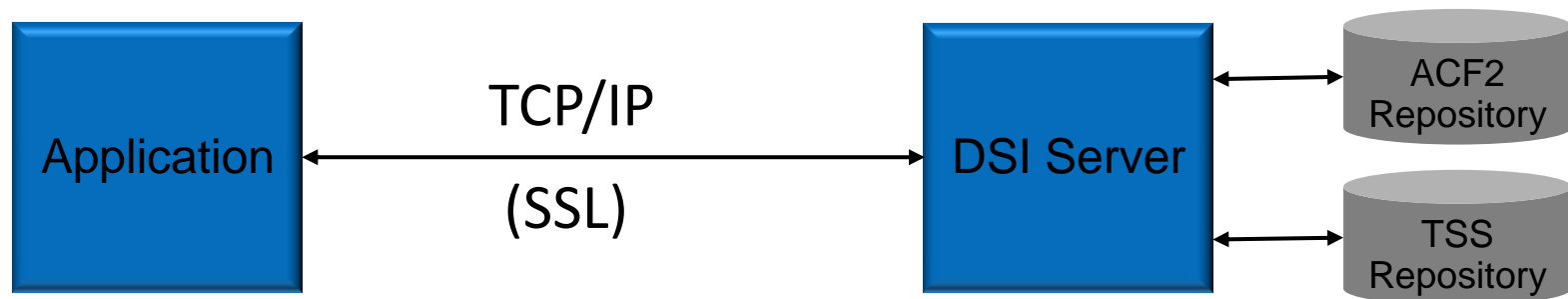
# CA DSI Architecture



## Implementation Options :

- Single server, single configuration, either ESM
  - Uses several callable services based on what's needed
- Uses System SSL
  - Hardware crypto/FIPS support

# Interaction with the ESM



- Like LDAP, never has direct access to the security file
  - Uses several callable services based on function invoked
  - No copy of the data to maintain or sync
  - ESM will determine if you are authorized (scoped)



# Why use CIA?

**CIA is an extremely useful addition to your security architecture**

Enables you to create/automate custom reporting of your security data, without impacting the response time of your security software.

**CIA has given us the ability to consolidate reporting for several systems to one central location**

Has also given us the ability to easily create custom reports that would otherwise take a long time to develop execs to create. Basic reports didn't/couldn't provide the information the way we wanted to present it.

# Creating your CIA database

Update user  
defined  
fields in CIA  
jobs

CIAUNLD: Unload  
your security data

CIADDL: Creates  
CIA Repository

CIALOAD &  
CIALOAD: Load  
data into your CIA  
repository

Create your  
repository  
database

DB2 for  
z/OS

Datacomm  
/AD

CIABIND

Binds the  
application  
packages  
so that the  
CIA service  
functions  
can  
execute.

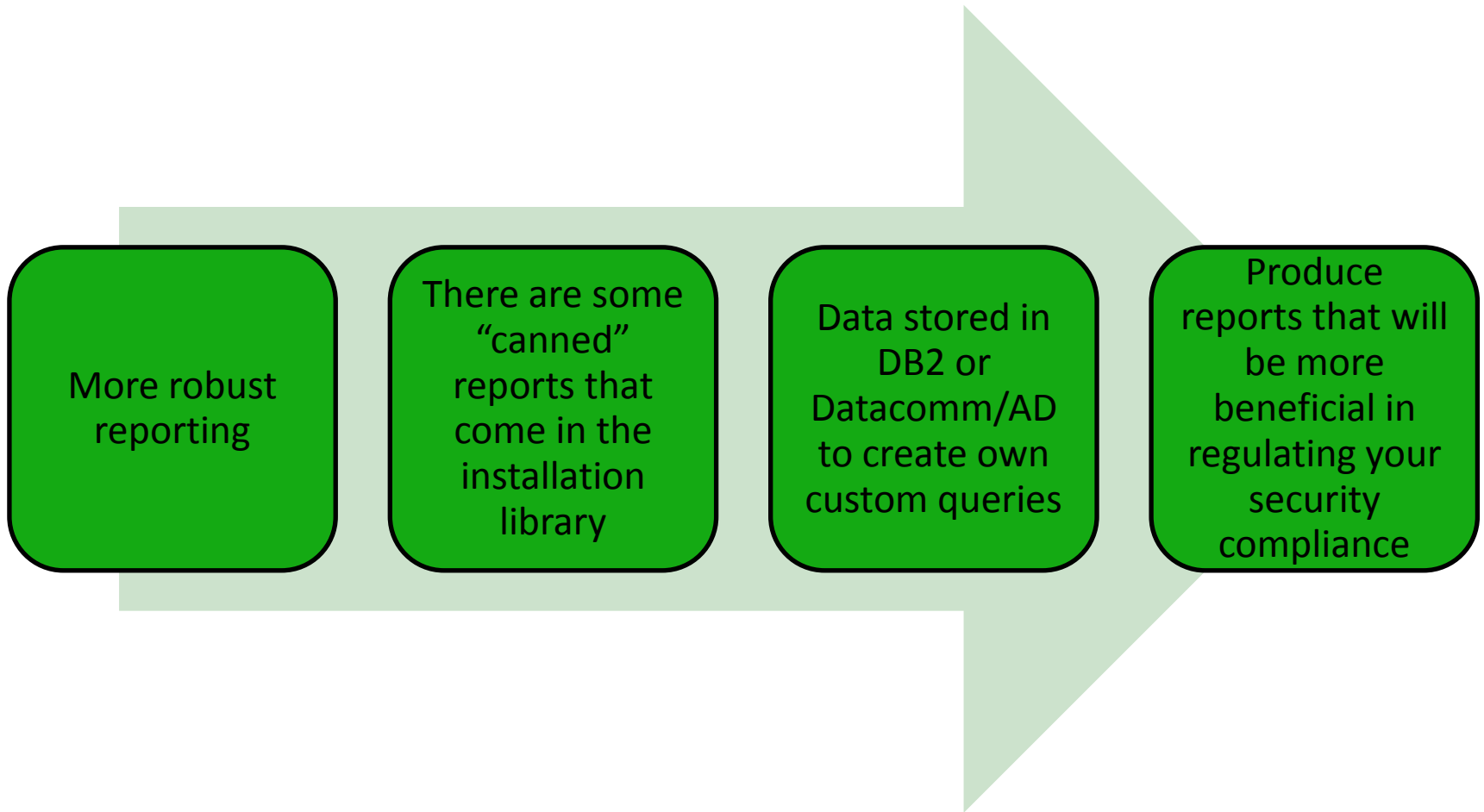
CIAFUNC

Installs the  
CIA service  
functions

CIALINK

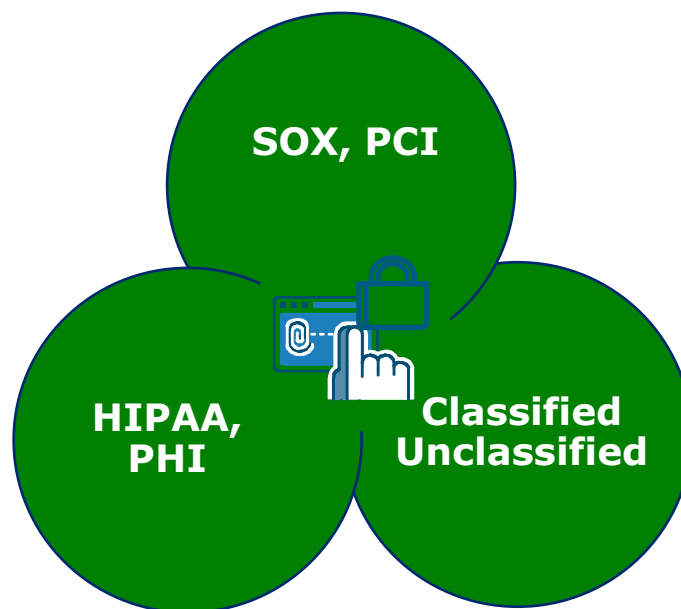
Links the  
DB2  
modules  
(DSNRLI &  
DSNTIAR)  
to the  
service  
functions

# Reporting with CIA



# Data classification

- Data Classification Enhancement
  - Add Data Classification and Ownerships to CA Compliance Manager Event Records and CA Mainframe Chorus for Security and Compliance Management



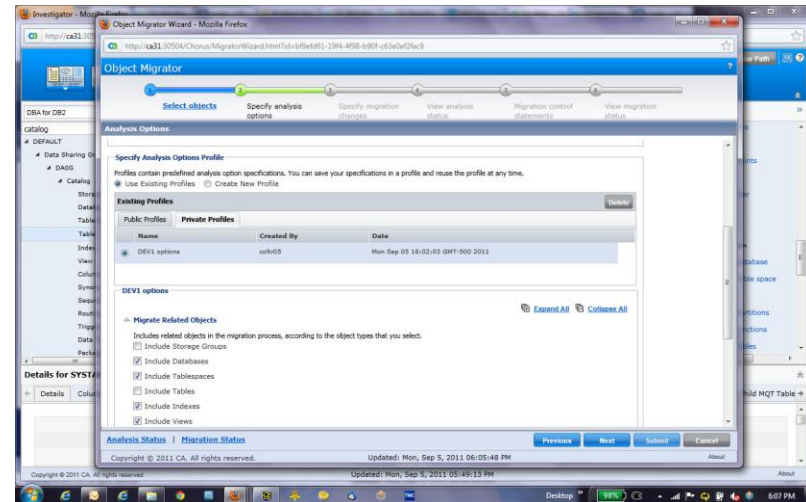
More than just a security tool...

# CA Mainframe Chorus for DB2 Database Management

**CA Mainframe Chorus provides a platform on which to build role-based workspaces.**

## **CA Mainframe Chorus for DB2 Database Management:**

- Delivers a unique user experience for DB2 for z/OS DBAs.
- Provides instant access to decades of DBA experience.
- Displays historical performance data.
- Allows users to:
  - Proactively monitor thresholds and alerts.
  - Quickly identify and resolve performance bottlenecks.

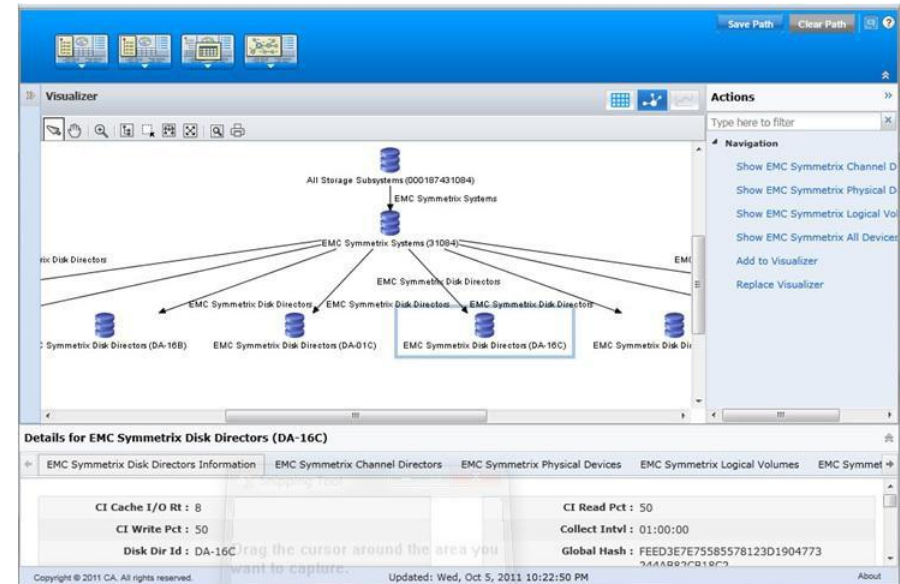




# CA Mainframe Chorus for Storage Management

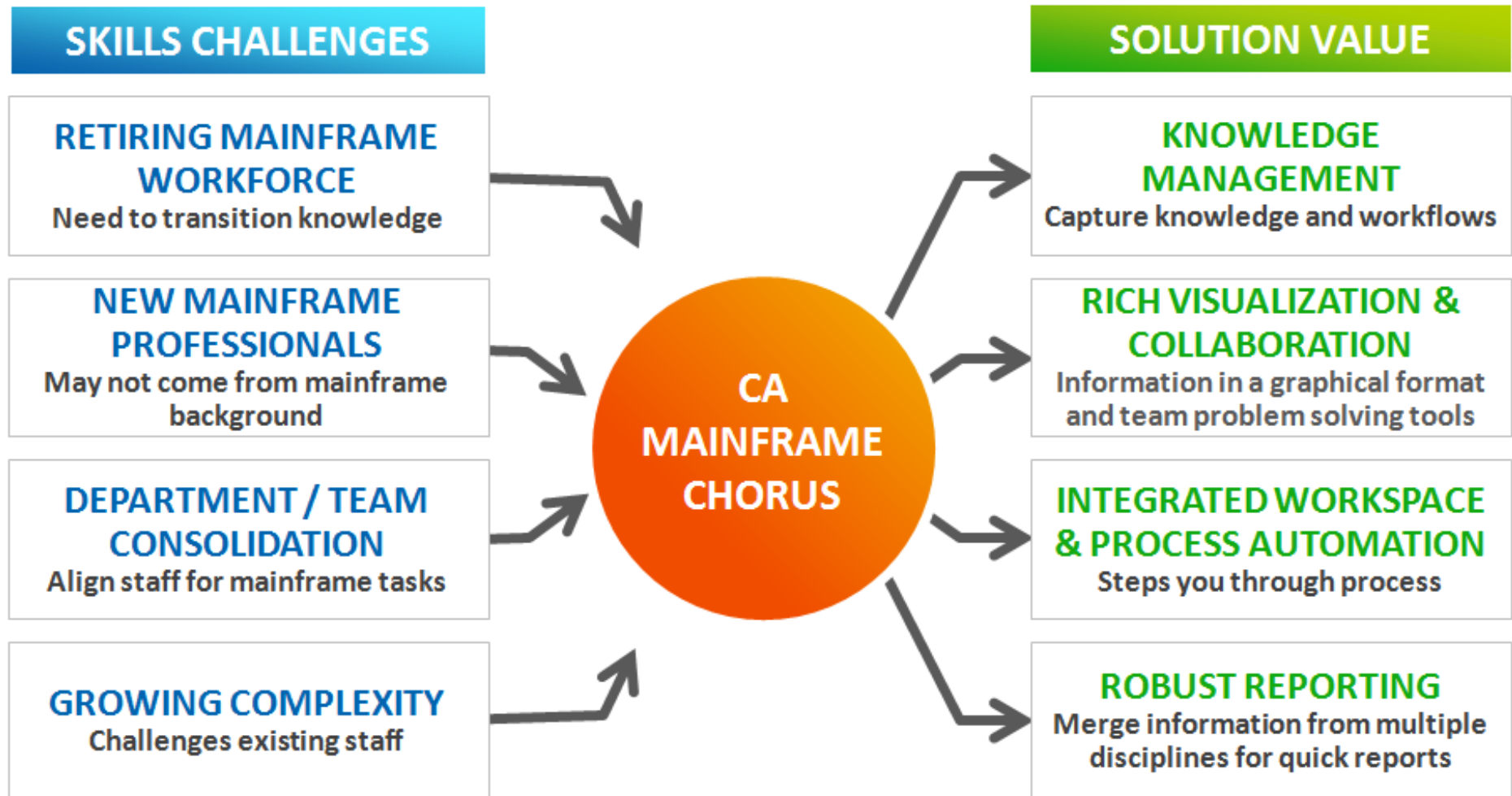
## CA Mainframe Chorus for Storage Management:

- Delivers a unique user experience for storage administrators.
- Enables non-mainframe skilled staff to assume storage management responsibilities.
- Includes storage objects, data and alerts in a consolidated view, enabling administrators to take appropriate actions based on current and future needs .
- Provides information that helps administrators monitor thresholds and alerts and identify, diagnose and resolve performance bottlenecks.



# Recap

# Skills challenges addressed by CA Mainframe Chorus



Copyright © 2012 CA. All rights reserved. z/OS and DB2 are trademarks of International Business Machines Corporation in the United States, other countries, or both. All trademarks, trade names, service marks and logos referenced herein belong to their respective companies.

THIS PRESENTATION IS FOR YOUR INFORMATIONAL PURPOSES ONLY. CA assumes no responsibility for the accuracy or completeness of the information. TO THE EXTENT PERMITTED BY APPLICABLE LAW, CA PROVIDES THIS DOCUMENT “AS IS” WITHOUT WARRANTY OF ANY KIND, INCLUDING, WITHOUT LIMITATION, ANY IMPLIED WARRANTIES OF MERCHANTABILITY, FITNESS FOR A PARTICULAR PURPOSE, OR NONINFRINGEMENT. In no event will CA be liable for any loss or damage, direct or indirect, in connection with this presentation, including, without limitation, lost profits, lost investment, business interruption, goodwill, or lost data, even if CA is expressly advised in advance of the possibility of such damages.

Certain information in this presentation may outline CA’s general product direction. This presentation shall not serve to (i) affect the rights and/or obligations of CA or its licensees under any existing or future license agreement or services agreement relating to any CA software product; or (ii) amend any product documentation or specifications for any CA software product. The development, release and timing of any features or functionality described in this presentation remain at CA’s sole discretion.

CA does not provide legal advice. Neither this presentation nor any CA software product referenced herein shall serve as a substitute for your compliance with any laws (including but not limited to any act, statute, regulation, rule, directive, policy, standard, guideline, measure, requirement, administrative order, executive order, etc. (collectively, “Laws”)) referenced in this document. You should consult with competent legal counsel regarding any Laws referenced herein.

# Q & A

Thank you