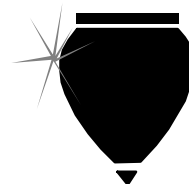


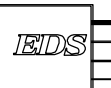
***Track 3: Client/Server
Session 310
Encyclopedia Management for
Client Server Applications -
Techniques and Tips***

Clay Reynolds
Electronic Data Systems

TOPPS Client/Server™



Health Care Division



Copyright © 1996, EDS

Agenda

- **TOPPS C/S Overview**
 - Description of the system
 - Team makeup
 - Metrics
- **Role of the Central Encyclopedia Coordinator (CEA)**
 - Standards
 - Project Planning / Release Scheduling
 - Releases
 - Maintenance

Health Care Division

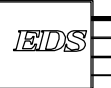


Copyright © 1996, EDS

Agenda

- **Model Management Strategies**
 - “Book” solution
 - Original Alignment
 - Expanded Alignment
 - Transitional Alignment
 - Production / Maintenance Alignment
- **Model Management Tools**
 - Built In Tools
 - User Created Tools
- **Problems and Solutions**
- **Questions and Answers**

Health Care Division

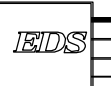


Copyright © 1996, EDS

Overview of TOPPS Client/Server™

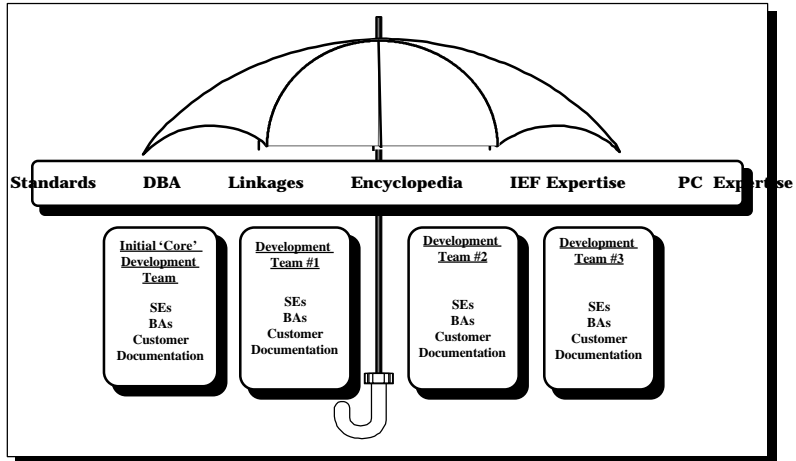
- **TOPPS Client/Server™ is a fully integrated managed care administrative system that allows single or multiple managed care organizations to fully administer HMO, PPO, POS, indemnity and hybrid managed care programs.**

Health Care Division



Copyright © 1996, EDS

Team Makeup



Health Care Division

EDS

Copyright © 1996, EDS

Metrics (Customer Release Model)

as of January 1, 1996

- **Subsystems / Business Systems**
 - 21 Subsystems (a.k.a. Functional Modules)
 - 50 Business Systems
- **Object Counts**
 - 71 Subject Areas
 - 345 Entities
 - 7860 Attributes
 - 1716 Windows / Dialog Boxes
 - 922 Procedures
 - 1816 Common Action Blocks
- **25,060 Function Points**
- **Productivity - Approximately 35 FP/mm**

Health Care Division

EDS

Copyright © 1996, EDS

Role of the Central Encyclopedia Coordinator (CEA)

- **Standards**
 - The CEA should help set all standards dealing with the encyclopedia, models, subsets, and objects.
- **Project Planning / Release Scheduling**
 - Because the CEA is involved with migration of required objects and creation of new models, the CEA should be included in all project planning sessions.
- **Releases**
 - The CEA is responsible for the migration of required objects for a release. Tasks involved: include identification of changed objects; creation and verification of aggregate sets; migration of objects

Health Care Division



Copyright © 1996, EDS

Role of the Central Encyclopedia Coordinator (CEA)

- **Maintenance**
 - Host upgrades to Composer
 - Object rename or deletion
 - Aggregate set maintenance
 - Reorgs
 - Backups
 - CEUCLEN
 - Communication of problems with the TI Help Desk

Health Care Division



Copyright © 1996, EDS

Model Management Strategies

- Model Management Strategies can effect the success of your project
- Be flexible in your strategy
 - Different projects may require different strategies
 - Think ahead to the next strategy
 - Adapt proven strategies to your situation

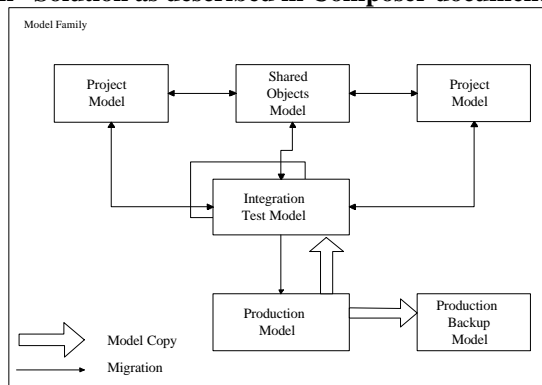
Health Care Division

EDS

Copyright © 1996, EDS

Model Management Strategies

- “Book” Solution as described in Composer documentation



Health Care Division

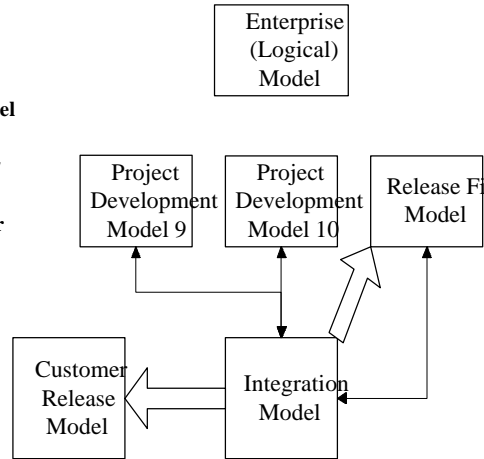
EDS

Copyright © 1996, EDS

Model Management Strategies

- **Transitional Alignment**

- Elimination of Physical Design Models
- Addition of Release Fix Model
- Few Development Models
- Lower migration activity to / from Development Models
- Higher migration activity for releases



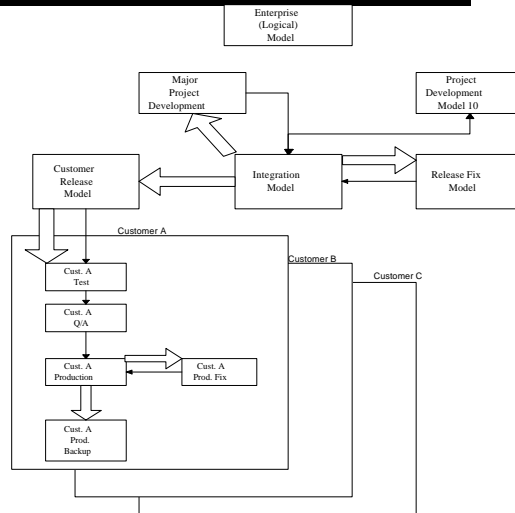
Health Care Division

Copyright © 1996, EDS

Model Management Strategies

- **Production and Maintenance**

- Blend of Previous Strategies
- Multiple Customers



Health Care Division

Copyright © 1996, EDS

Model Management Tools

- **Built In Tools**
 - When Changed Report
 - References Uses Report
 - Object Comparison
- **User Developed Tools**
 - When Changed Compression Routine
 - When Changed Merge
 - When Changed Comparison
 - References / Uses Compression Routine
 - Word Templates

Health Care Division



Copyright © 1996, EDS

Built In Tools

- **When Changed Report**
 - Used for general migrations
 - Run by developers, sent to CEA
 - Details all changes (with some exceptions)
- **References Uses Report**
 - Used for migration of whole system components (i.e. Business Systems)
 - Run against Procedure Steps and Action Blocks
 - Can take many iterations to get clear picture
- **Object Comparison**
 - Used to synchronize models
 - Find name changes
 - Find objects of the same type with the same name that were created independently

Health Care Division



Copyright © 1996, EDS

User Developed Tools

- **When Changed Compression Routine**
 - Compresses report to 1 line per object changed
 - Performs a “roll up” of some objects to higher level objects
 - Action Block Member to Action Block
 - Import and Export View Set to Action Block
 - Some Defaults to Business System
 - Permitted Range and Values to Attribute
 - Eliminates duplicate objects
 - Sorted by object type

Health Care Division

EDS

Copyright © 1996, EDS

```

AGGREGATE OBJECT WHEN CHANGED REPORT
  MODEL NAME:          RELEASE INTEGRATION TEST
                        OBJECTS CHANGED BETWEEN 02/29/96 AND
03/07/96
                        BY USER TOPPBTC
                        REPORT SORTED ALPHABETICALLY BY OBJECT TYPE
AND NAME
1
0 03/07/96             AGGREGATE OBJECT WHEN CHANGED REPORT
PAGE 1
15:41
  MODEL NAME:          RELEASE INTEGRATION TEST
                        OBJECTS CHANGED BETWEEN 02/29/96 AND
03/07/96
                        BY USER TOPPBTC
                        REPORT SORTED ALPHABETICALLY BY OBJECT TYPE
AND NAME
0
DIRECT CHANGE
  OBJECT TYPE AND NAME
TIME  USER ID
-----
-----
Common Action Block CAB BE ENGLISH SYNTAX ACCUM 96/03/07
Health Care Division
Common Action Block 96/03/07
15:16 TOPPBTC
Copyright © 1996, EDS
  
```

EDS

```

*****
** When Changed Report Compression Routine **
*****
      PLOG NUMBER: BRAD
*****
** Date: 03/25/96   Time: 10:18am   **
** Input File Name: D:\TEST\WHENCHG2.TXT **
** Output File Name: D:\TEST\WHENCHG2.OUT **
*****

*****
MODEL NAME: RELEASE INTEGRATION TEST
BY USER TOPPBTC
*****
Common Action Block CAB_BE_ENGLISH_SYNTAX_ACCUM @ 96/03/07 @ 15:34 @ TOPPBTC @ BRAD
Common Action Block CAB_CL_BATCH_CLAIM_PROCESS_DRIV @ 96/03/07 @ 15:16 @ TOPPBTC @ BRAD
Common Action Block CAB_CL_PROCESS_BATCH_CLAIMS @ 96/03/07 @ 15:16 @ TOPPBTC @ BRAD
Common Action Block CAB_CL_PROVIDER_RELATIONSHIP @ 96/03/05 @ 09:25 @ TOPPBTC @ BRAD
Default Dialog Box CL_INQ_HOSP_HDR_DESC_C within IEF PStep CL_INQ_HOSP_HDR_DESC_C @ 96/03/07 @ 15:26 @ TOPPBTC @
BRAD

```

Health Care Division



Copyright © 1996, EDS

User Developed Tools

- **When Changed Merge Routine**
 - Merges multiple compressed When Changed reports
 - Reports all duplicates
 - Sorted by object type
- **When Changed Comparison Routine**
 - Compares 2 compressed When Changed reports

Health Care Division



Copyright © 1996, EDS

User Developed Tools

- **References / Uses Compression Routine**
 - Used for migration of whole system components
 - Performs a “roll up” of some objects to higher level objects
 - Attributes to Entity
 - Command to Business System
 - Work Attributes to Work Attribute Set
 - Process Action Block to Process
 - Does not “roll up” IEF PStep to Procedure
 - Dialog flows for secondary PSteps in multi-step procedures will not migrate if Procedure is the scoping object
- **Word templates for migration requests**

Health Care Division



Copyright © 1996, EDS

Problems and Solutions

- **Modification of read statements do not change the Action Block**
- **Size of DOBJ table and the size of the DPRP table can dramatically effect performance. Our DOBJ table is much bigger than our DPRP table.**
- **Logon Flows - too many to check out**

Health Care Division



Copyright © 1996, EDS

Questions and Answers

Health Care Division



EDS

Copyright © 1996, EDS