

---

# CA Business Intelligence Report Portal

CA Services

© 2013 CA

---

Document Title	CA Business Intelligence Report Portal 3.2 with MS SQL Database
Customer	
Last Saved Date	
Version	2.0

## Document Properties

Attribute	Value
Customer Name:	N/A
Document Number:	XXX0001
Document Version:	2.00*
Version Date:	
Document Status:	Review
Authors	Aravind Gopaluni

Copyright © 2013 CA.

All rights reserved. All trademarks, trade names, service marks and logos referenced herein belong to their respective companies.

This document is for your informational purposes only. To the extent permitted by applicable law, CA provides this document "As Is" without warranty of any kind, including, without limitation, any implied warranties of merchantability or fitness for a particular purpose, or non-infringement. In no event will CA be liable for any loss or damage, direct or indirect, from the use of this document including, without limitation, lost profits, business interruption, goodwill or lost data, even if CA is expressly advised of such damages.

---

**CONFIDENTIAL**

### Document Overview

Item	Description
Document Objective:	
Audience:	
Modified by:	
Project Stage	
Document Owner:	
Project Complexity:	
Notes:	

### Change History

Date	Version	Author	Description of Change
	2.0	Aravind Gopaluni	Document Creation

### Distribution List

Date	Version	Name	Organizational Position

### Referenced Documents

Related Project Documents
CA ControlMinder Bookshelves



## **1 CREATE A NEW USER/DB IN SQL SERVER, FOR CMS DATABASE**

User Privileges: Make the user as DB owner for the database created. Make the database as the default database for this user

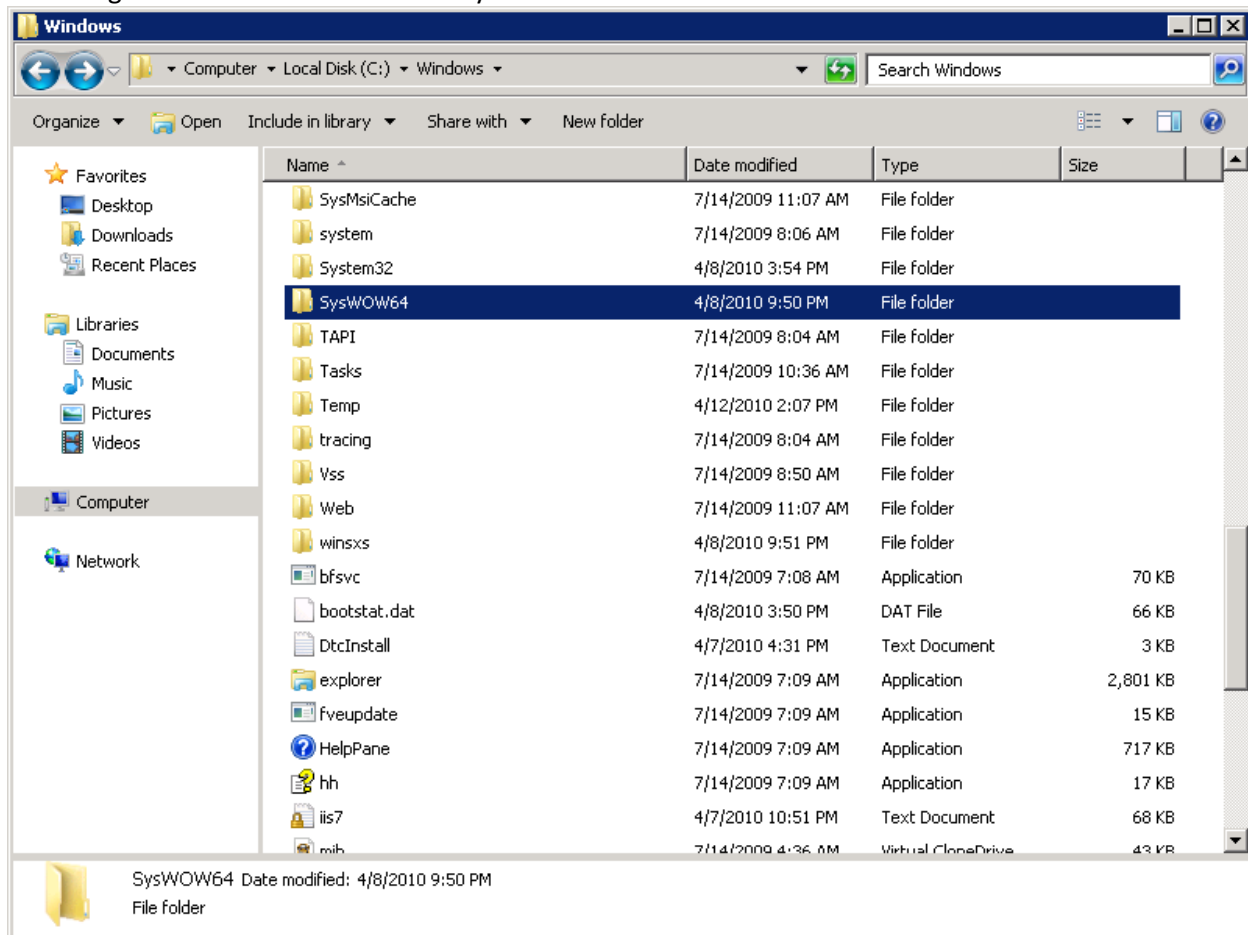
## 2 SETUP DSN FOR CA BUSINESS INTELLIGENCE CONNECTION

To install CA BI using SQL Server as the CMS host, you need to configure an ODBC connection to your database. These steps will require the database login and name that were set in the previous section. Specific steps follow, but in general, you will create a system DSN that connects to the SQL Server database that you previously set up.

Note: CA BI 3.x requires a 32-bit ODBC connection. As Windows 2008 R2 is a 64 bit operating system, the ODBC DSN should be created using `odbc32.exe` under SysWOW64 folder.

**The following are detailed steps for configuring an ODBC connection to a SQL Server database prior to installing CA BI:**

- a. Navigate to C drive -> Windows -> SysWOW64 folder



- b. Run `odbc32.exe` to invoke 32bit odbc configuration window



**Microsoft SQL Server DSN Configuration**

This wizard will help you create an ODBC data source that you can use to connect to SQL Server.

What name do you want to use to refer to the data source?

Name:

How do you want to describe the data source?

Description:

Which SQL Server do you want to connect to?

Server:

- f. Select SQL Server authentication and enter the Login ID and Password entered in the database configuration steps

**Microsoft SQL Server DSN Configuration**

How should SQL Server verify the authenticity of the login ID?

☐ With Windows NT authentication using the network login ID.

☒ With SQL Server authentication using a login ID and password entered by the user.

To change the network library used to communicate with SQL Server, click Client Configuration.

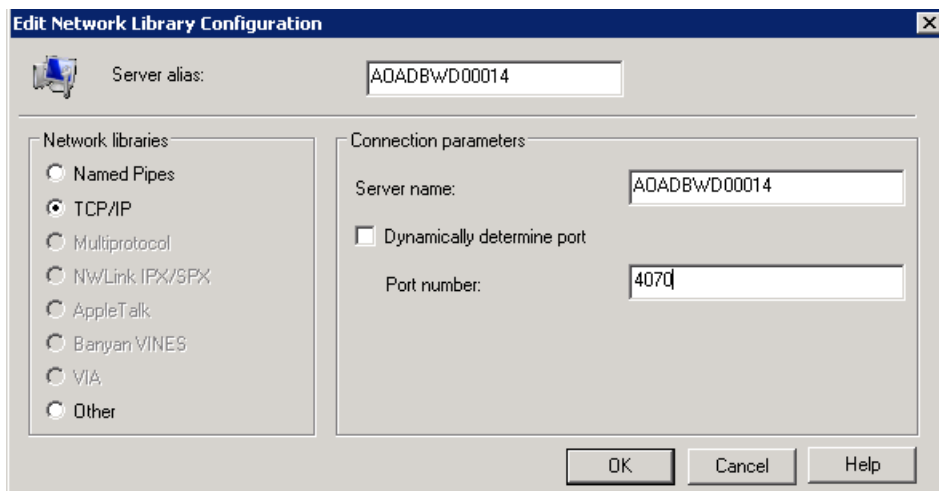
☒ Connect to SQL Server to obtain default settings for the additional configuration options.

Login ID:

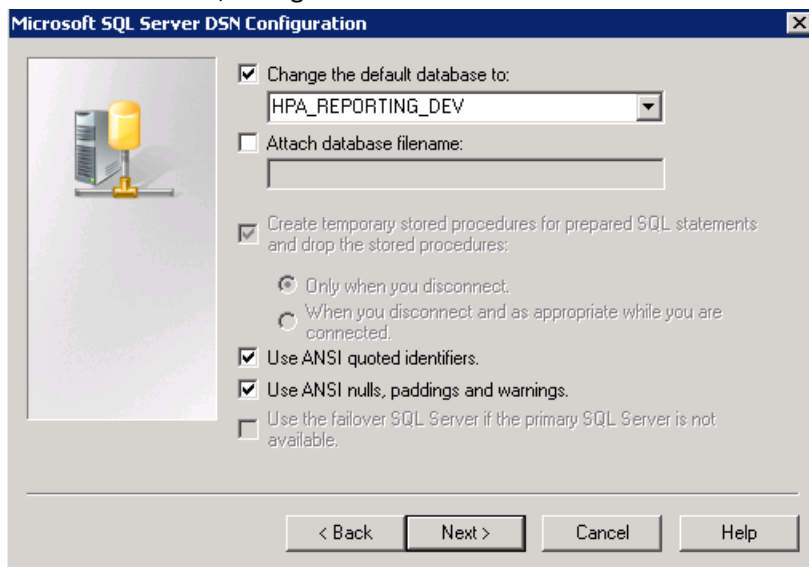
Password:

- g. Select 'Client Configuration' and ensure proper port is being used and click next

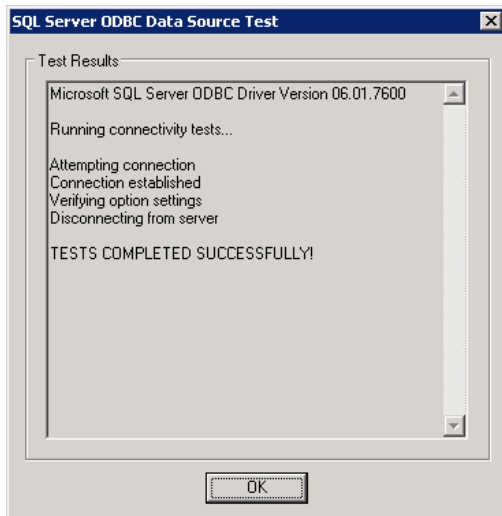




- h. In the next screen, change the default database to the CMS database created



- i. Leave the defaults in the next screen  
j. Verify if the connection is working



### 3 CA BUSINESS INTELLIGENCE INSTALLATION

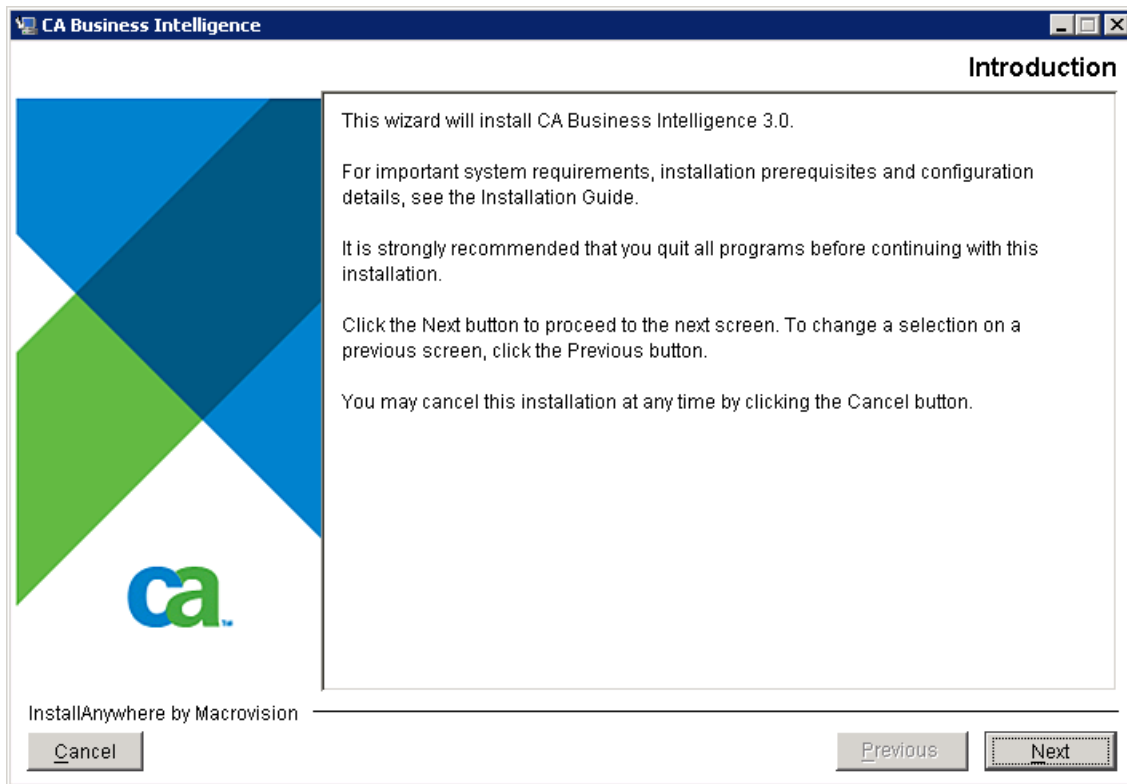
CA Business Intelligence installation requires the Data Source Name that was configured in the chapter “Setup DSN for a CA Business Intelligence Connection”, as well as the database name, and the database login information that was created in the chapter “Configure SQL Server for Use as the CA Business Intelligence Database”.

The Microsoft Windows systems that you are installing on must meet or exceed the following requirements.

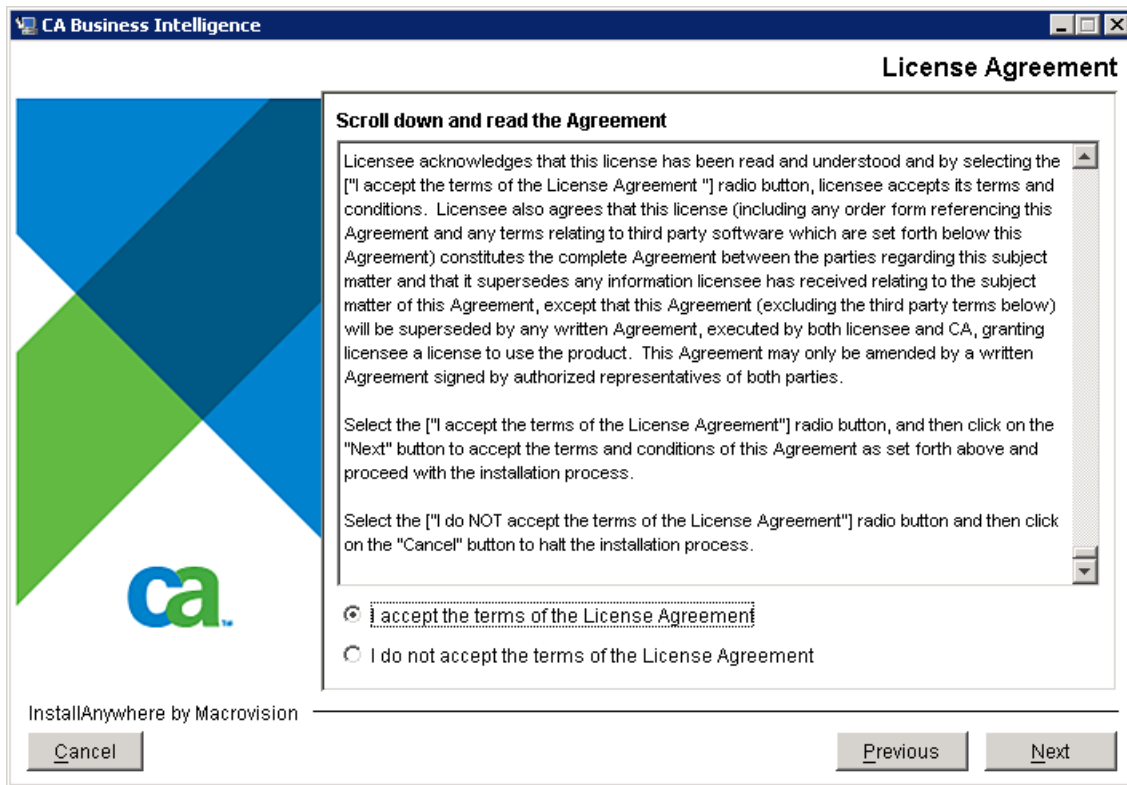
- 2.0 GHz Pentium 4-class processor
- 2 GB RAM
- 5.6 GB hard disk space for BusinessObjects Enterprise for complete install
- 6.75 GB hard drive for BusinessObjects Enterprise patch install

To successfully install CA BI on Windows, the user who runs the installation must be a member of the local Administrators group

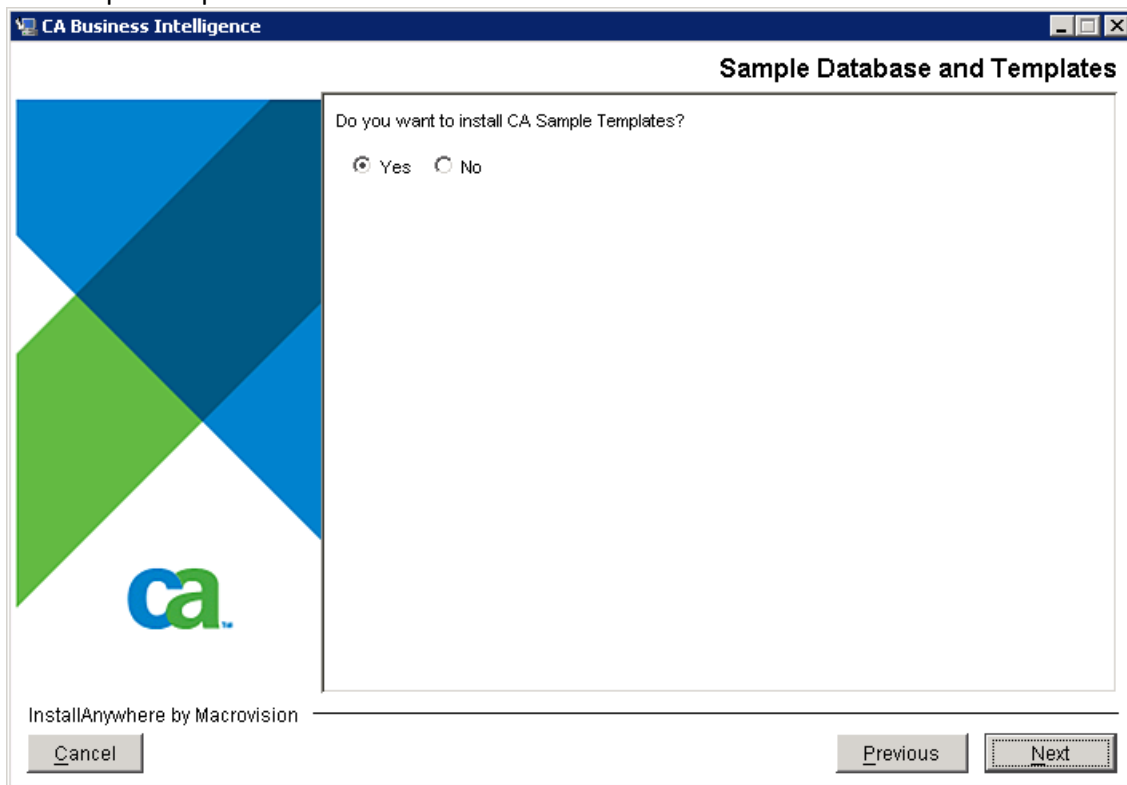
- a. On the Introduction screen click on Next



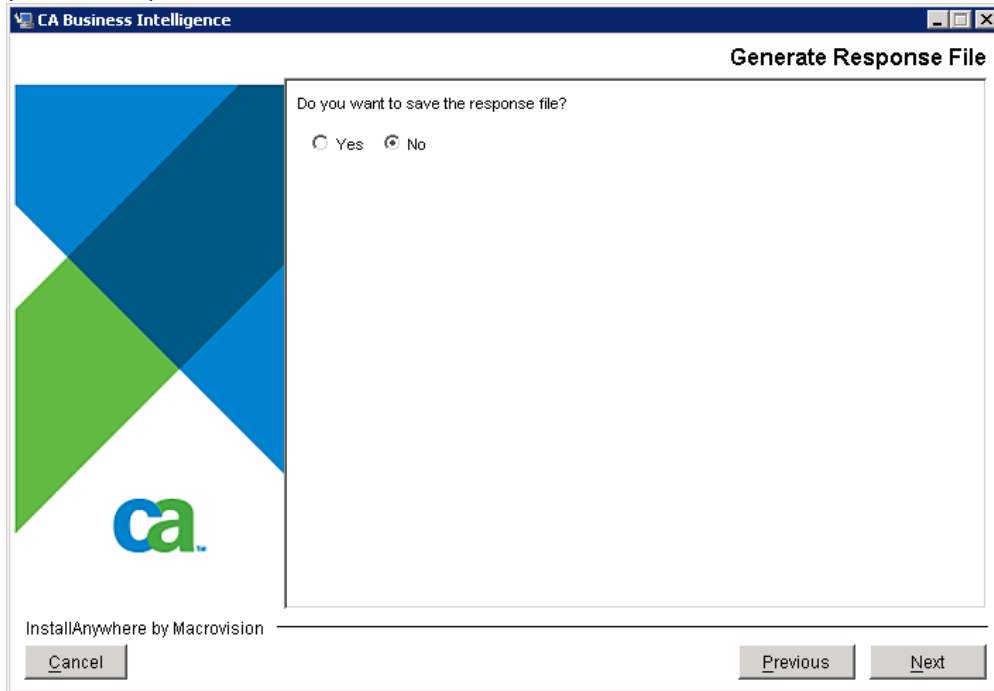
- b. Accept the license agreement, click next



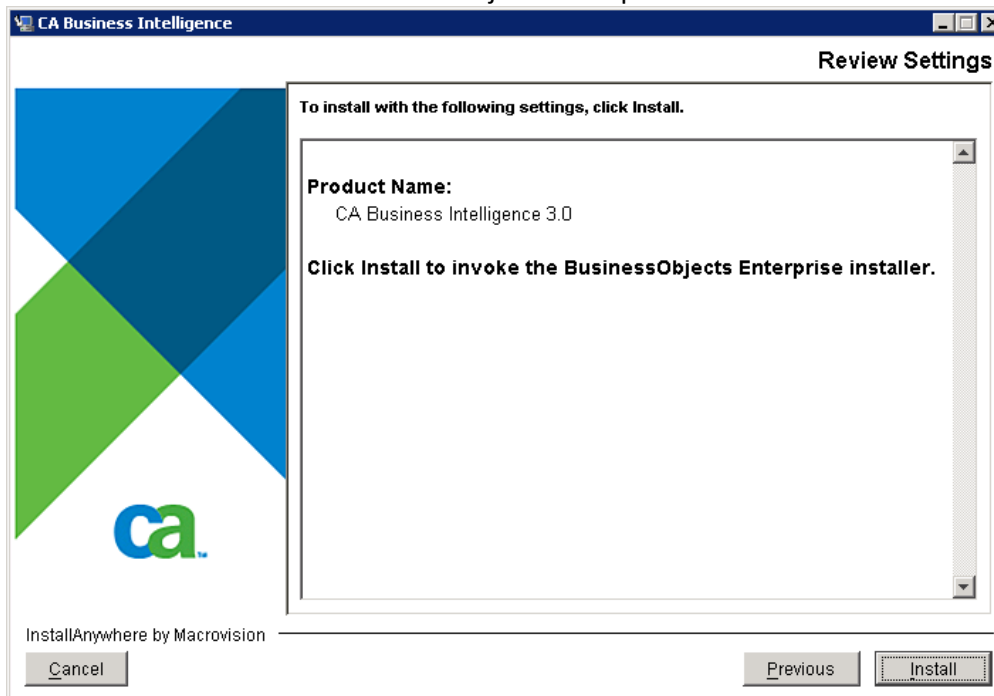
- c. CA Business Intelligence will install Sample Database and Templates, select Yes if you want to install the sample templates and click Next



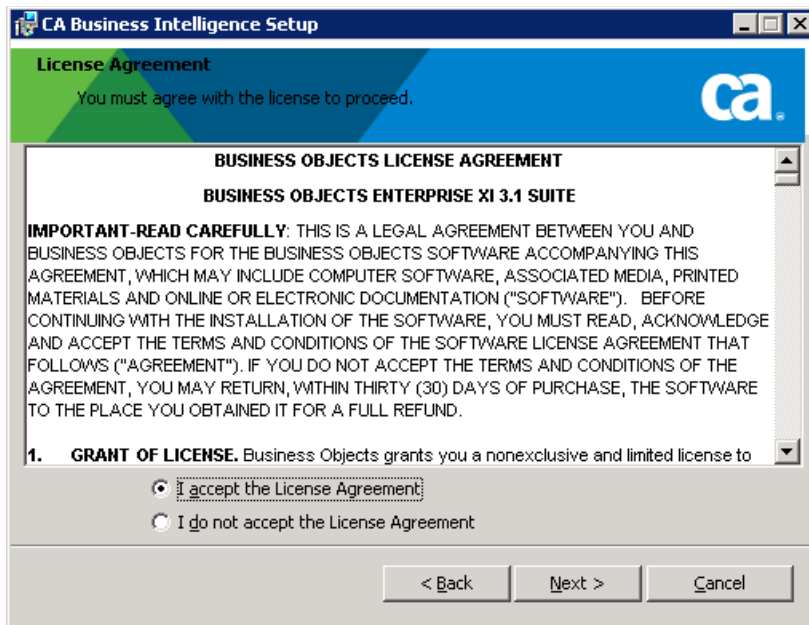
- d. CA Business Intelligence installer allows creating a response file for silent installation. Select No if you do not plan to do a silent installation. Click Next



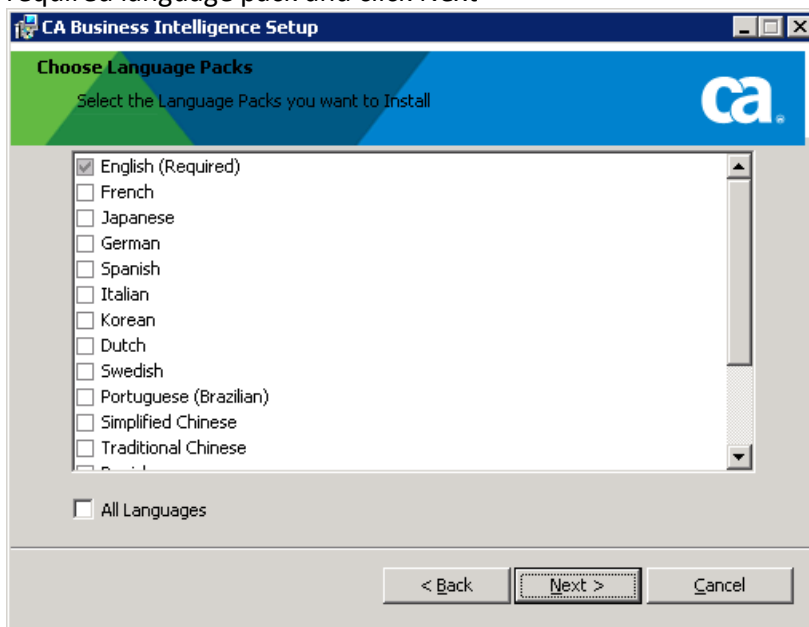
- e. Click on Install to start the Business Objects Enterprise Installer



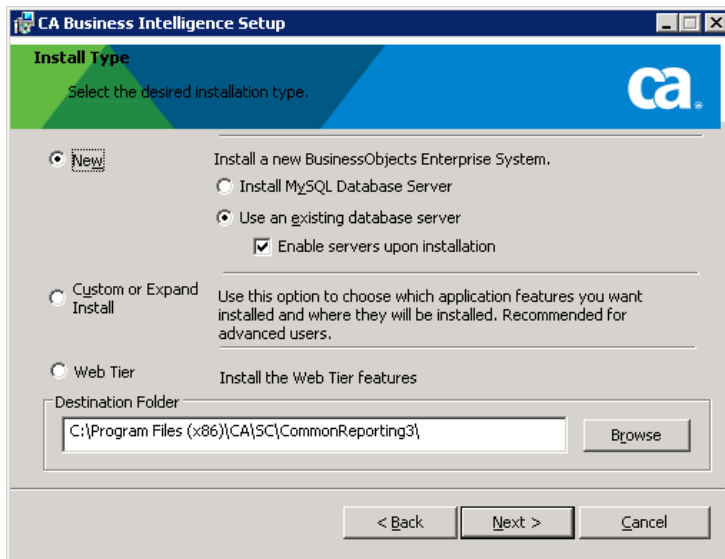
- f. Accept the Business Objects License Agreement



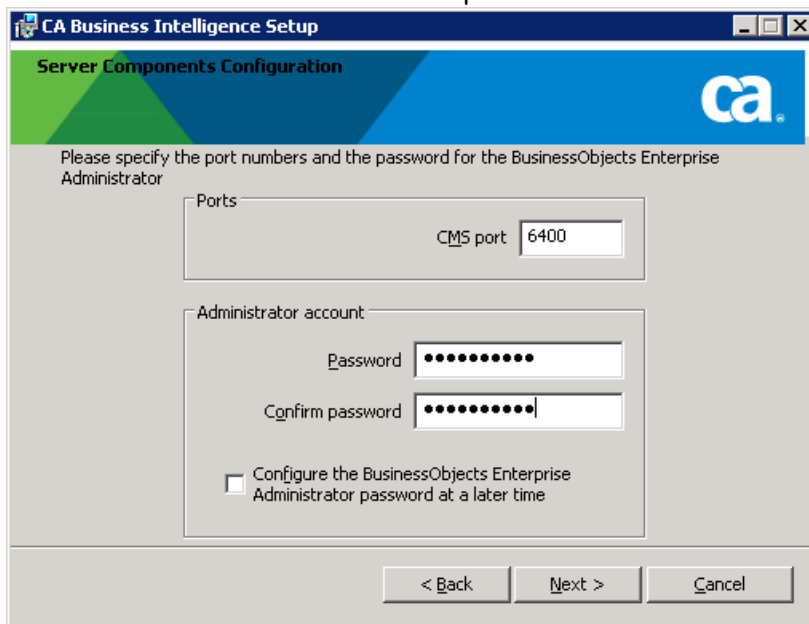
- g. Business Objects provides single installer for multiple languages in addition to English , select the required language pack and click Next



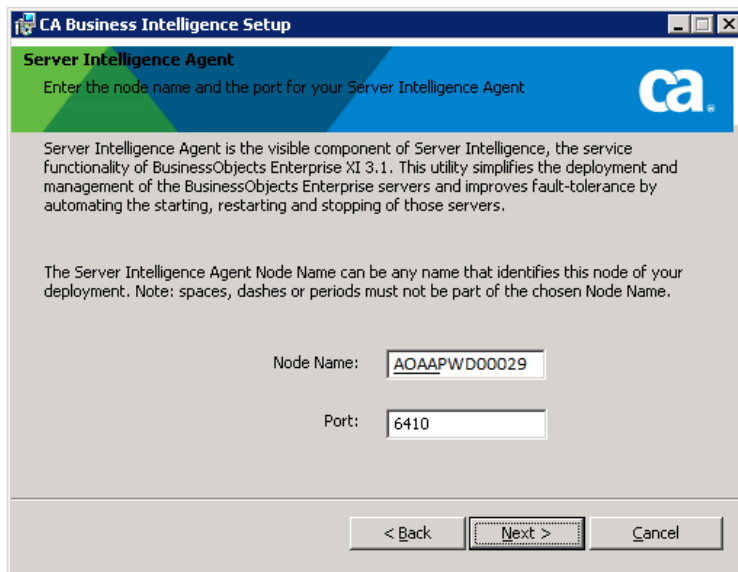
- h. Select the Install Type as New. The default installation location is under C Drive; click Browse if you want to change the Destination Folder



- i. In the Server Components Configuration screen, specify the CMS port and password for Administrator account. Default CMS port is 6400



- j. Business Objects XI release 3 installs Server Intelligence Agent for simplifying the deployment and management of Business Objects Enterprise Server. Accept the default Node Name and port number, click Next



**CA Business Intelligence Setup**

**Server Intelligence Agent**  
Enter the node name and the port for your Server Intelligence Agent

Server Intelligence Agent is the visible component of Server Intelligence, the service functionality of BusinessObjects Enterprise XI 3.1. This utility simplifies the deployment and management of the BusinessObjects Enterprise servers and improves fault-tolerance by automating the starting, restarting and stopping of those servers.

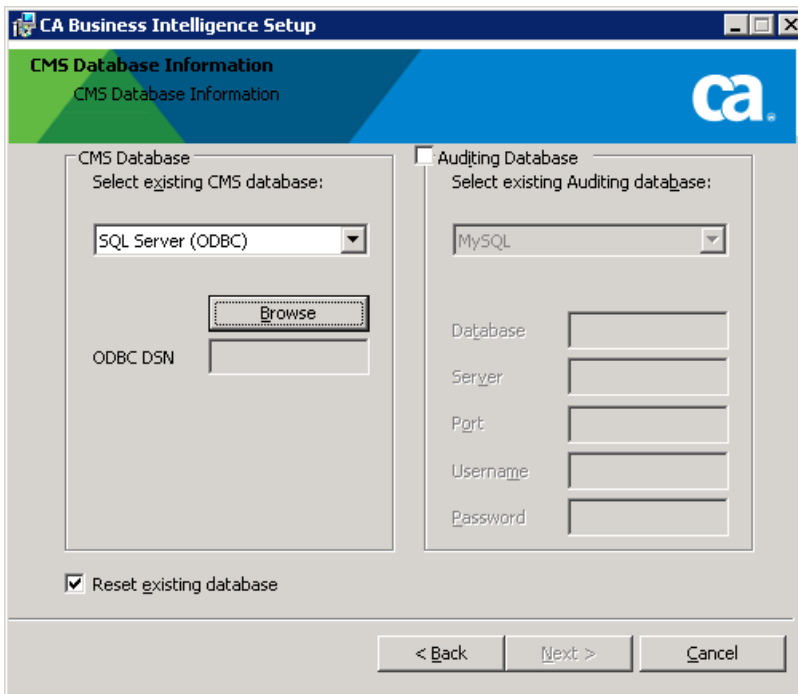
The Server Intelligence Agent Node Name can be any name that identifies this node of your deployment. Note: spaces, dashes or periods must not be part of the chosen Node Name.

Node Name:

Port:

< Back   **Next >**   Cancel

- k. On the CMS Database Information screen, select SQL Server (ODBC) for CMS Database. Click Browse to select the DSN



**CA Business Intelligence Setup**

**CMS Database Information**  
CMS Database Information

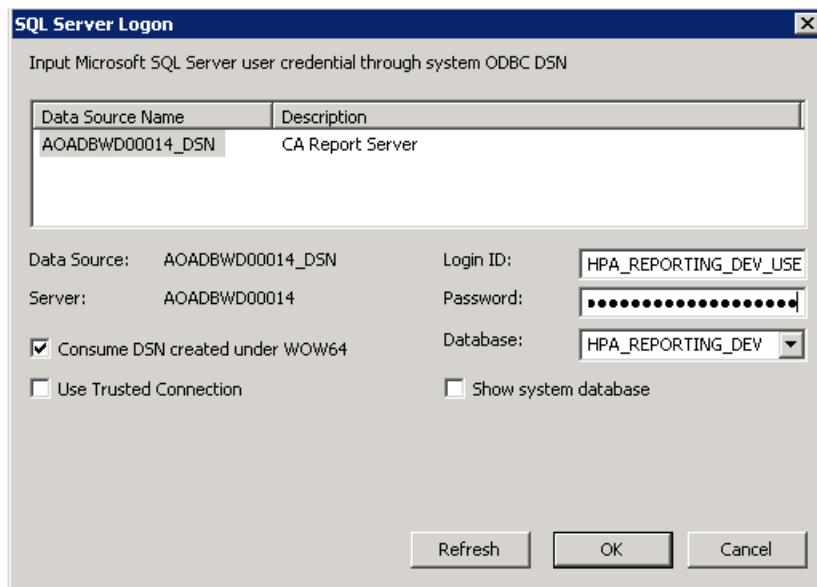
☒ CMS Database  
Select existing CMS database:  
  
**Browse**  
ODBC DSN

☐ Auditing Database  
Select existing Auditing database:  
  
Database   
Server   
Port   
Username   
Password

☒ Reset existing database

< Back   **Next >**   Cancel

- l. On the SQL Server Logon window, select AOAAPWD00029\_DSN, type the Login ID, Password for HPA\_REPORTING\_DEV database. Make sure the "Consume DSN created under WOW64" checked. Click OK



SQL Server Logon

Input Microsoft SQL Server user credential through system ODBC DSN

Data Source Name	Description
AOADBWD00014_DSN	CA Report Server

Data Source: AOADBWD00014\_DSN      Login ID: HPA\_REPORTING\_DEV\_USE

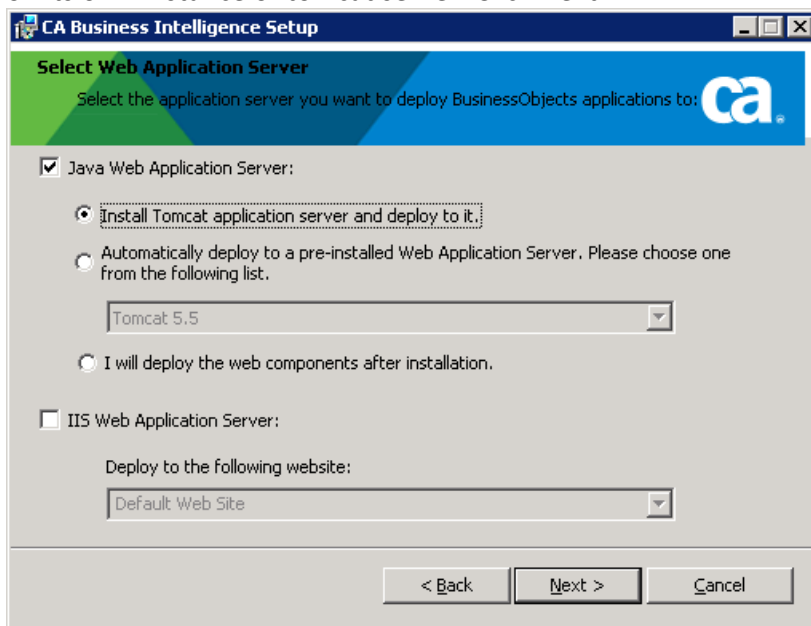
Server: AOADBWD00014      Password: .....

☒ Consume DSN created under WOW64      Database: HPA\_REPORTING\_DEV

☐ Use Trusted Connection      ☐ Show system database

Refresh      OK      Cancel

- m. CA Business Intelligence requires Tomcat as web server. In the Select Web Application Server screen, select Tomcat Web Application Server option. Business Objects recommends running BOXI on its own instance of tomcat server. Click Next



CA Business Intelligence Setup

Select Web Application Server

Select the application server you want to deploy BusinessObjects applications to:

☒ Java Web Application Server:

- ☒ Install Tomcat application server and deploy to it.
- ☐ Automatically deploy to a pre-installed Web Application Server. Please choose one from the following list.  
Tomcat 5.5
- ☐ I will deploy the web components after installation.

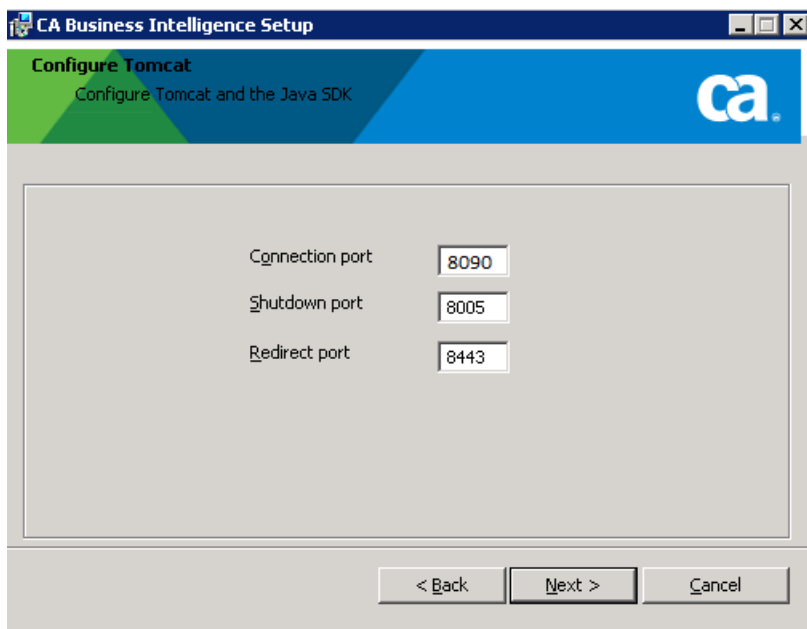
☐ IIS Web Application Server:

Deploy to the following website:  
Default Web Site

< Back      Next >      Cancel

- n. On the Configure Tomcat screen, the default tomcat connection port is set to 8090. However, it can be changed if another tomcat instance is running on 8090 on the server. Click Next





- o. Click Next to Start the installation

## 4 DEPLOY REPORT PORTAL PACKAGE

- a. Create another 32bit system DSN for ENTM DB
- b. Copy the contents of the \Disk1\cabi\biconfig folder from CA Business Intelligence for Windows DVD, into C:\Temp directory.
- c. Insert the appropriate CA Access Control Premium Edition Server Components DVD for your operating system into your optical disc drive and navigate to the \ReportPackages folder.
- d. Copy the following files from CA Access Control Premium Edition Server Components DVD into the same C:\Temp directory:
  - a. \ReportPackages\RDBMS\import\_biar\_config.xml
  - b. \ReportPackages\RDBMS\AC\_BIAR\_File.biar
- e. Edit the copy of import\_biar\_config\_mssql2005.xml with the following properties

```
<?xml version="1.0"?>
<biconfig version="1.0">
  <step priority="1">
    <add>
      <biar-file name="c:/temp/AccessControl_SQLServer.biar">
        <networklayer>ODBC</networklayer>
        <rdms>MS SQL Server 2008</rdms>
        <username>ENTM DB User</username>
        <password>ENTM DB Password</password>
        <datasource>ENTM DB DSN</datasource>
        <server>ENTM DB Server Name</server>
      </biar-file>
    </add>
  </step>
</biconfig>
```
- f. Execute the following command to import BIAR file

```
cmd> biconfig.bat -h <Report Portal Server Name> -u Administrator -p <Report portal Admin Password> -f C:\Temp\import_biar_config_mssql2005.xml
```

## 5 CONFIGURE ENTM FOR REPORTING

- a. Go to IDMMANAGE/Environments/ac-env/Advanced Settings/Reports
- b. Update Database Details and Business Objects Server details

Note: Under database section, provide ENTM Database details - not CABI CMS Database

\*\*\*Important: If CMS database details are provided, data will not appear in reports