

> Modernizing CA IDMS™ Databases and Applications

IUA Workshop

October 2007

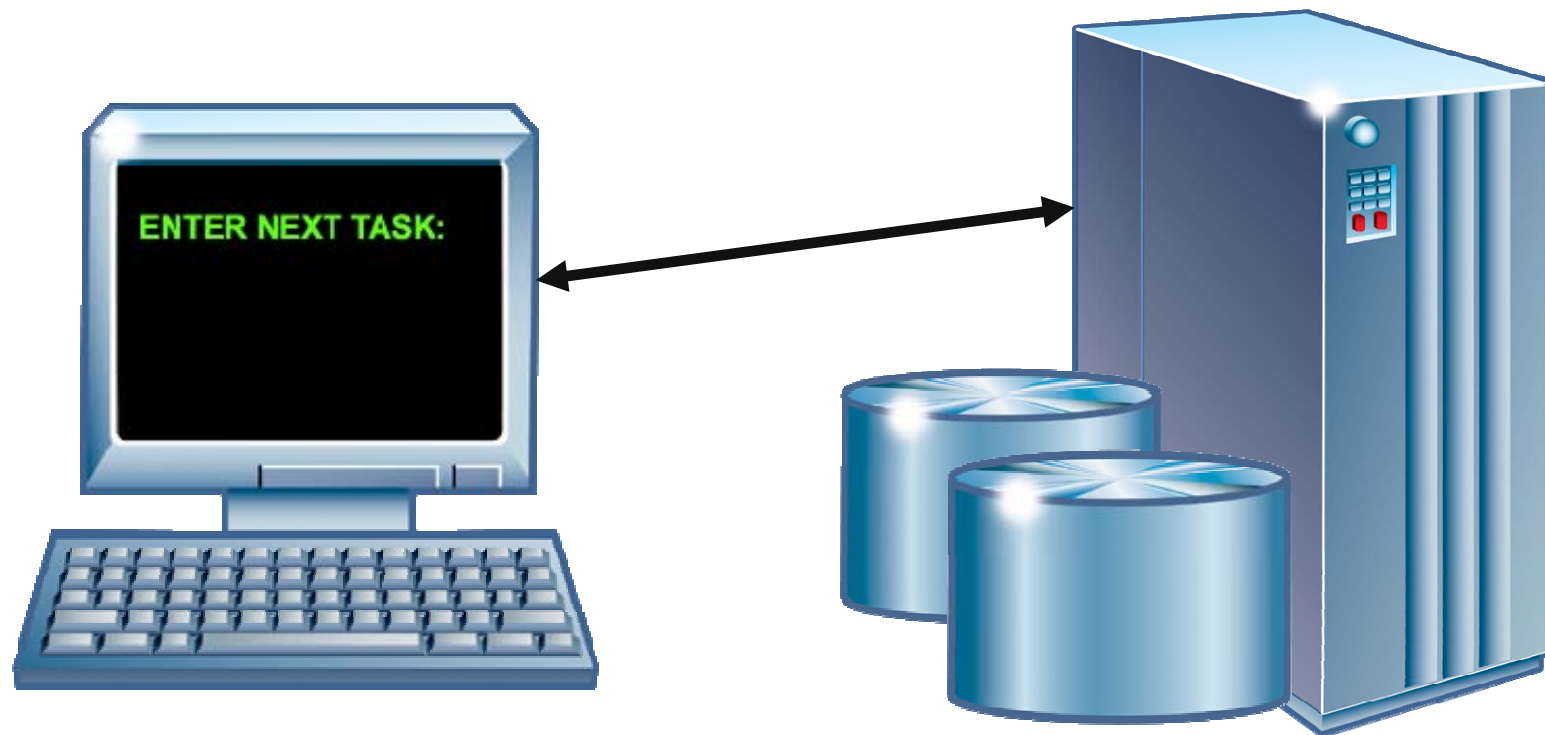
Abstract

Your site has adopted SOA as an application strategy, installed an application server such as WebSphere or WebLogic, and now you need to make it all work with CA IDMS™. This session describes how you can use CA IDMS™ SQL and Server and other vendor products to modernize your CA IDMS databases and applications, making them a integral parts of this new application environment.

Agenda

- > Modern application environment
- > Modernizing CA IDMS™ databases
- > Modernizing CA IDMS applications
- > CA IDMS SQL and Server
- > Partner products

Traditional IDMS Applications



CA IDMS/DB-DC

New Technologies

Almost Everything Has Changed

> User interfaces

- Web, GUI

> Programming languages

- Java, C#

> Development tools

- Eclipse, WebSphere Studio, Visual Studio

> Deployment platforms

- J2EE, .NET

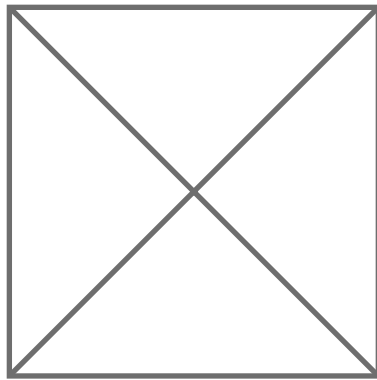
Modern Applications

Composite Applications

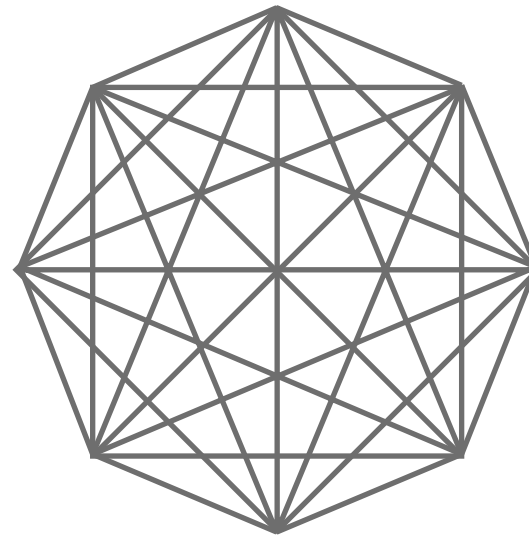
- > Multiple tiers
- > Web based GUIs
- > Application servers
- > Legacy enterprise resources

Silos of Incompatibility

Connections Increase Exponentially



4 Nodes
6 Connections



8 Nodes
28 Connections

Service Oriented Architecture

Enterprise System Bus

- > Business processes = services
- > Standard interfaces
- > Platform independent
- > Web services
- > Based on internet technologies

Challenges of Modernization

- > Large investment in legacy applications
- > Legacy skills are hard to find
- > Pressure to control costs
- > How to reuse legacy applications?

Modernizing CA IDMS

What We Mean

- > CA IDMS enterprise information system resources
 - Databases
 - Business logic
- > Service Oriented Architecture
- > Web applications
 - Access CA IDMS
- > Web services
 - Encapsulate CA IDMS

Benefits of Modernization

CA IDMS as an EIS Resource Manager

- > Use current developer skills
 - Modern languages
 - Popular development environments
- > Deploy on current platforms
 - J2EE
 - .NET
- > Preserve existing applications

Modernizing CA IDMS

How You Can Do It

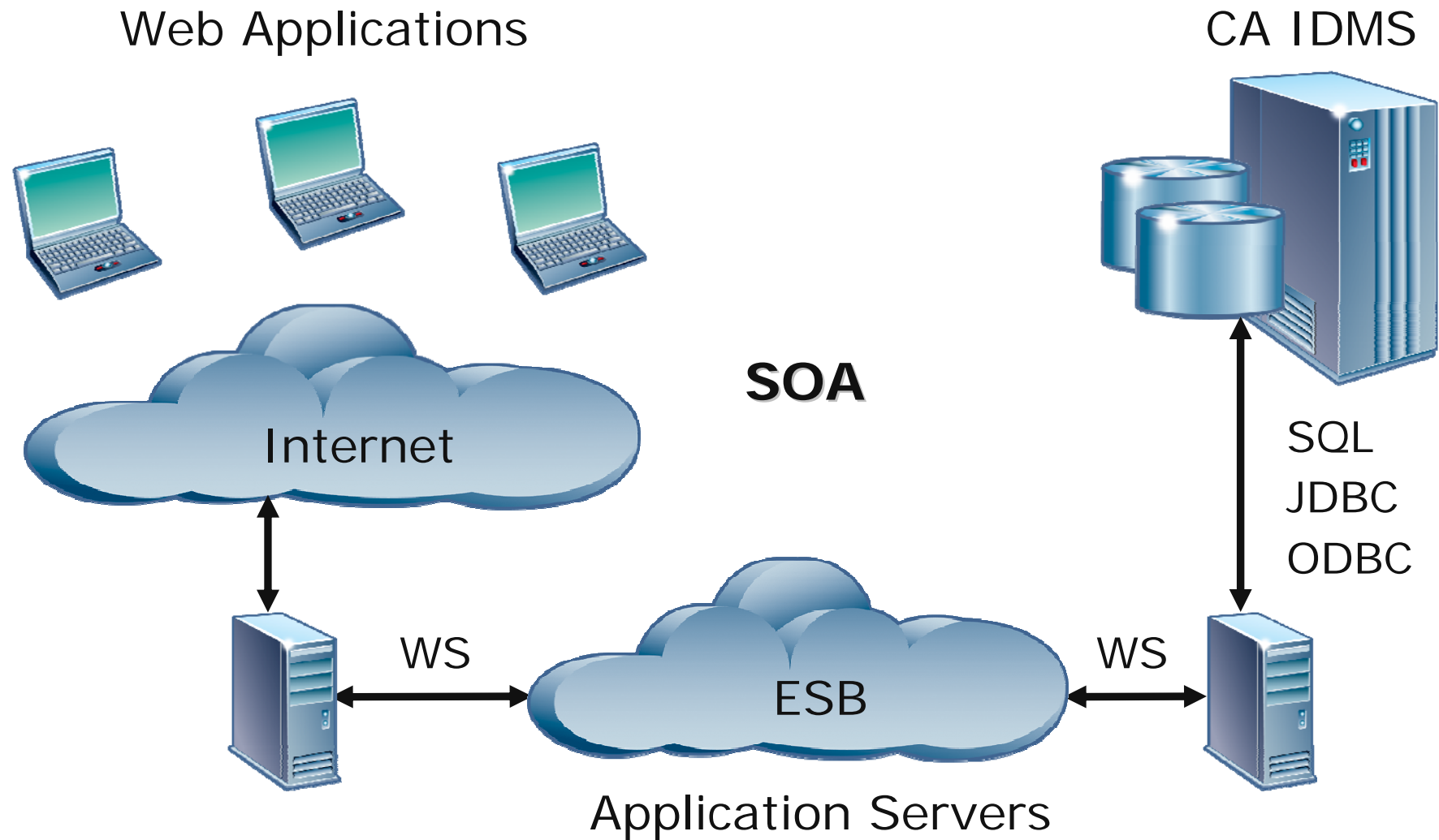
> Use industry standard APIs

- SQL
- ODBC, JDBC, and .NET
- Web services

> Enabled by

- CA IDMS SQL
- CA IDMS Server
- Partner Solutions

Modern Application Architecture





Modernizing CA IDMS Databases

CA IDMS SQL
CA IDMS Server

SQL and Network Databases

Network to Relational Mapping

> Schema = schema

- Network schema
- Database instance

> Record = table

- Names preserved

SQL and Elements

Network to Relational Mapping

> Element = column

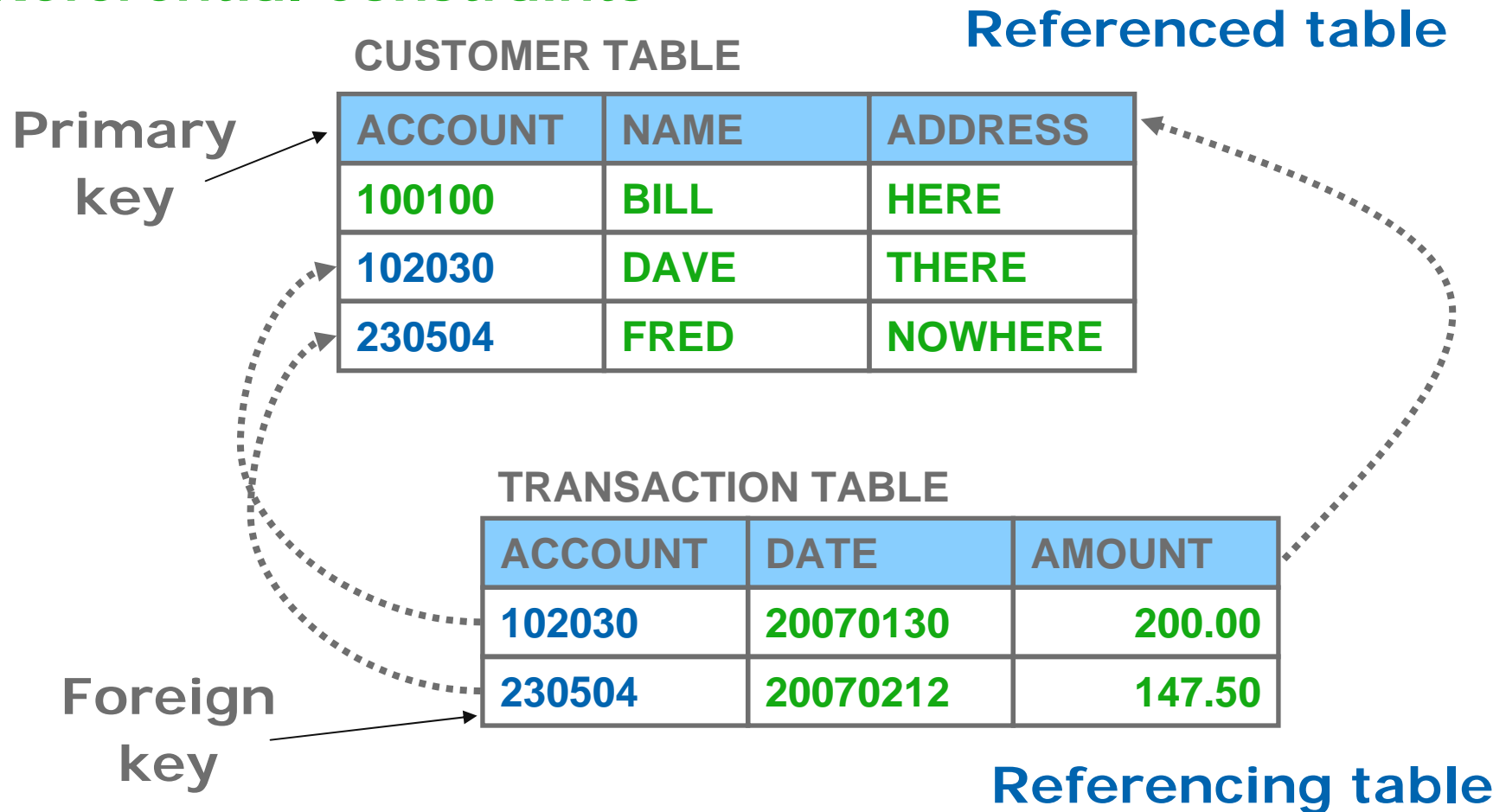
- Lowest level element
- Names translated
- Element synonyms for SQL
- COBOL to SQL types

> Some structures not mapped

- Group items
- Occurs depending

SQL and Sets

Referential Constraints





Database Techniques

Syntax extensions
Table procedures
Foreign keys

CA IDMS SQL Extensions

No Database Changes

> WHERE <set name> predicate

- Join criteria
- Most useful for retrieval

> ROWID column

- Based on DBKEY
- Stable within transaction
- Can use for updates

Table Procedures

Encapsulate Native DML

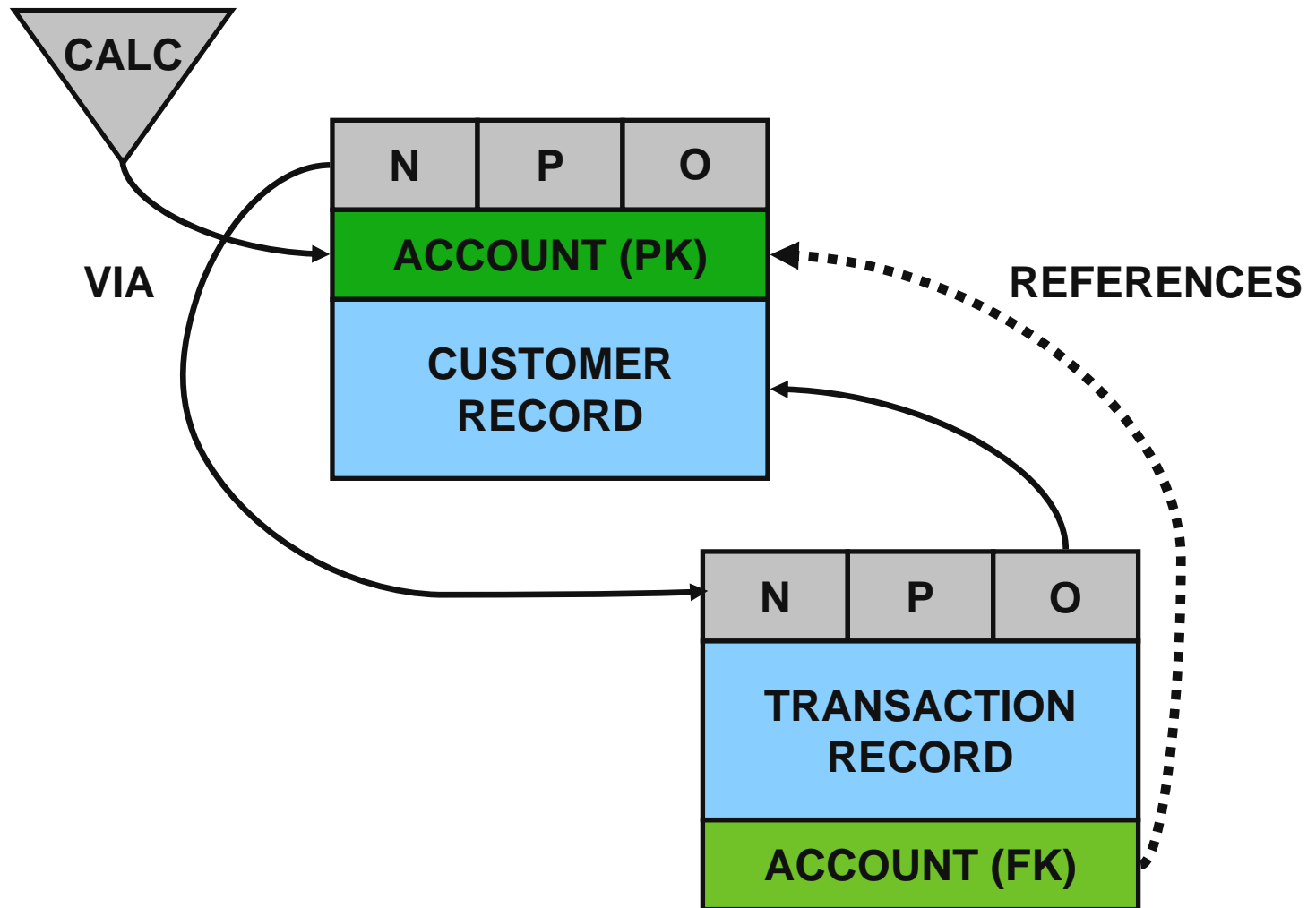
> Appear like table

- SELECT
- INSERT
- UPDATE
- DELETE

> Enabled by CA IDMS™ SQL QuickBridge

> Encapsulate relationships

Foreign Keys



Benefits of Foreign Keys

Standard SQL

- > Referential constraints enforced
 - INSERT
 - UPDATE
 - DELETE
- > Standard metadata
 - ODBC
 - JDBC
- > Compatibility with common tools
 - Application generators
 - Data warehousing

Implementing Foreign Keys

Not Quite Automatic

- > Define foreign keys for set
- > Restructure member record
- > Populate foreign keys in member
- > Maintain foreign keys in member
- > Alternative to migration
 - Can do incrementally
 - Less cost
 - Less effort

Tradeoffs

	Standard SQL	New programs	Application changes	Restructure	Sets
SQL extensions	No	No	No	No	Limited
Table procedures	Yes	Yes	No	No	Encapsulate
Foreign keys	Yes	No	Limited	Targeted	Referential constraints



Modernizing CA IDMS Applications

Modernizing CA IDMS Applications

Make Them Services

> Issues

- Separation of business from presentation logic
- Invoking the business logic from the modern environment

> Think in terms of components

Call Interface

Like a Remote Procedure Call

> Extract logic from application

- Subroutines
- Map-less dialogs
- Extracted code

> Invoke using

- SQL procedures
- Socket programs
- JCA adapters
- Web services

CA IDMS Socket Programs

CA IDMS r16 TCP/IP

- > Define client-server protocol
- > Write server task
- > Write client program
- > Wrap in web service
- > Consume web service

CA IDMS SQL Procedures

CA IDMS SQL and CA IDMS Server

> Define with CREATE PROCEDURE

> Implement with

- CA ADS™ map-less dialog
- Small wrapper program

> Call with standard APIs

- SQL CALL statement
- ODBC/JDBC/ADO.NET

> Wrap in web service

Presentation Interface

Avoids the Logic Separation Issue

- > Find the data in the screen buffer
 - Screen geometry
 - Field names
- > Control the flow of screens
 - Scripting language
- > Can be sensitive to changes
- > Think in terms of components



Vendor Solutions

CICS Gateway
HostBridge
DataDirect Shadow

CICS Transaction Gateway

CICS Applications

- > Java Connector Architecture
- > Web services
 - Java components
 - Deployed in WebSphere
- > WebSphere Studio “service project”

CICS JCA Adapters

What the CTG Provides

- > External Call Interface Adapter
 - CICS COMMAREA applications
- > External Presentation Interface Adapter
 - CICS 3270 applications
 - Field order
 - BMS map converter for field names
 - Scripting language is Java

HostBridge

CICS and CA IDMS/UCF Applications

- > Runs in CICS
- > Web services, XML documents
- > COMMAREA
- > BMS
 - Field names
- > UCF
 - Row, column
- > JavaScript

DataDirect Shadow

CA ADS, CA IDMS™/DC Applications

- > Runs in its own address space
- > Web services
- > Development plug-ins
 - Reads dictionary
 - Field names from maps
 - Scripting language
- > CA IDMS as web service consumer



Enterprise Information Technology Management

CA IDMS

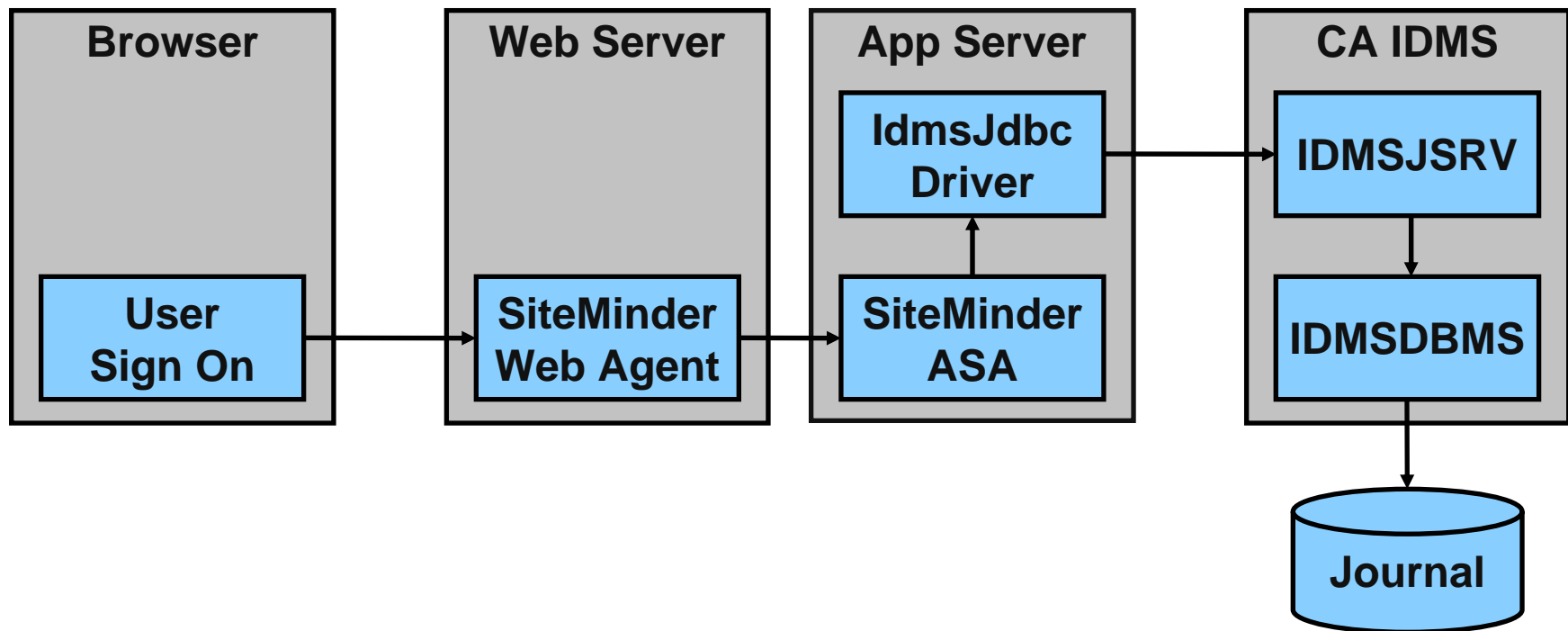
EITM: Transforming IT Management

Enterprise IT Management (EITM) is CA's vision for how to **unify and simplify** IT management to maximize the value to the business.

To transform IT management, CA delivers solutions that effectively **govern , manage and secure** IT.

CA SiteMinder®

CA IDMS Server r16.1 Identity Auditing



CA Wily Introscope®

Application Performance Management

- > J2EE Application Servers

- > Transaction Tracer

- Identify problem transactions

- > SQL Agent

- Individual SQL statements
- SQL and application server interactions
- Any JDBC connected application

Summary

- > More than one way to modernize
 - Databases
 - Applications
- > Tools and techniques
 - CA
 - Partners
- > Modernization can be incremental
- > Modernization can be done
- > Modernization is worth it

Legal

This presentation was based on current information and resource allocations as of October 10, 2007 and is subject to change or withdrawal by CA at any time without notice. Notwithstanding anything in this presentation to the contrary, this presentation shall not serve to (i) affect the rights and/or obligations of CA or its licensees under any existing or future written license agreement or services agreement relating to any CA software product; or (ii) amend any product documentation or specifications for any CA software product. The development, release and timing of any features or functionality described in this presentation remain at CA's sole discretion. Notwithstanding anything in this presentation to the contrary, upon the general availability of any future CA product release referenced in this presentation, CA will make such release available (i) for sale to new licensees of such product; and (ii) to existing licensees of such product on a when and if-available basis as part of CA maintenance and support, and in the form of a regularly scheduled major product release. Such releases may be made available to current licensees of such product who are current subscribers to CA maintenance and support on a when and if-available basis. In the event of a conflict between the terms of this paragraph and any other information contained in this presentation, the terms of this paragraph shall govern.

Legal

Certain information in this presentation may outline CA's general product direction. All information in this presentation is for your informational purposes only and may not be incorporated into any contract. CA assumes no responsibility for the accuracy or completeness of the information. To the extent permitted by applicable law, CA provides this document "as is" without warranty of any kind, including without limitation, any implied warranties or merchantability, fitness for a particular purpose, or non-infringement. In no event will CA be liable for any loss or damage, direct or indirect, from the use of this document, including, without limitation, lost profits, lost investment, business interruption, goodwill, or lost data, even if CA is expressly advised of the possibility of such damages.

Questions & Answers