



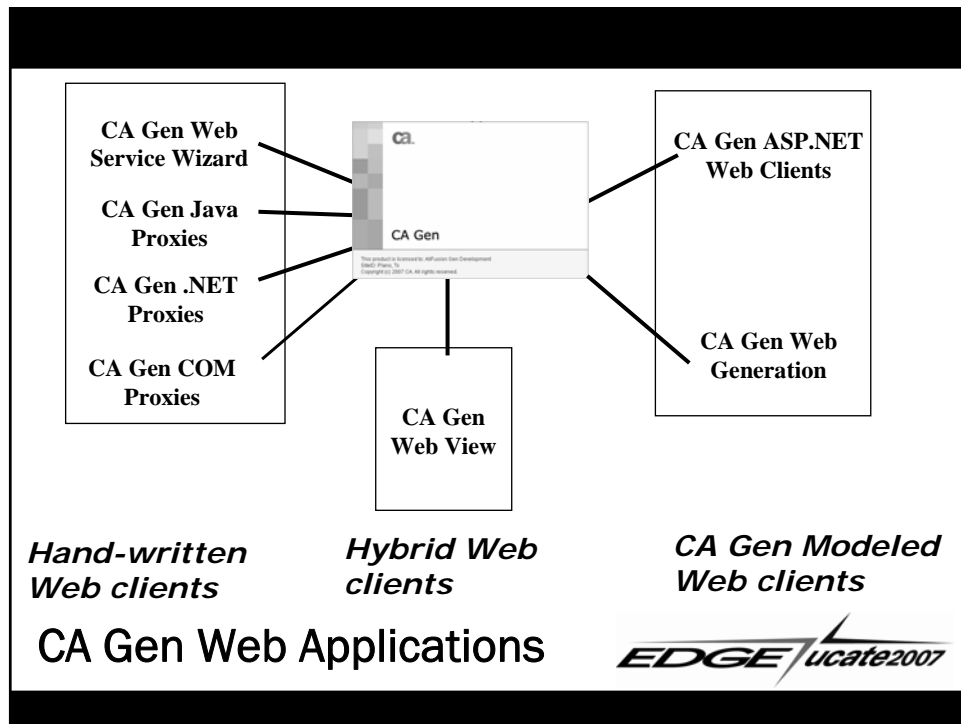
A Glimpse at the Future

Gregory Fox
CA
Architect, Development

Agenda

- CA Gen Studio
- Web View
- Data Modeling
- Demos
- Questions and Answers





EDGE/ucate2007
October 29-31, 2007
Plano, Texas

CA Gen Studio

Targeted for CA Gen r8.0

CA Gen Studio

- CA Gen Studio is the foundation for new CA Gen tools
- It is an Eclipse RCP
- It will support multiple features including a new Entity Relationship Diagram and a Web designer



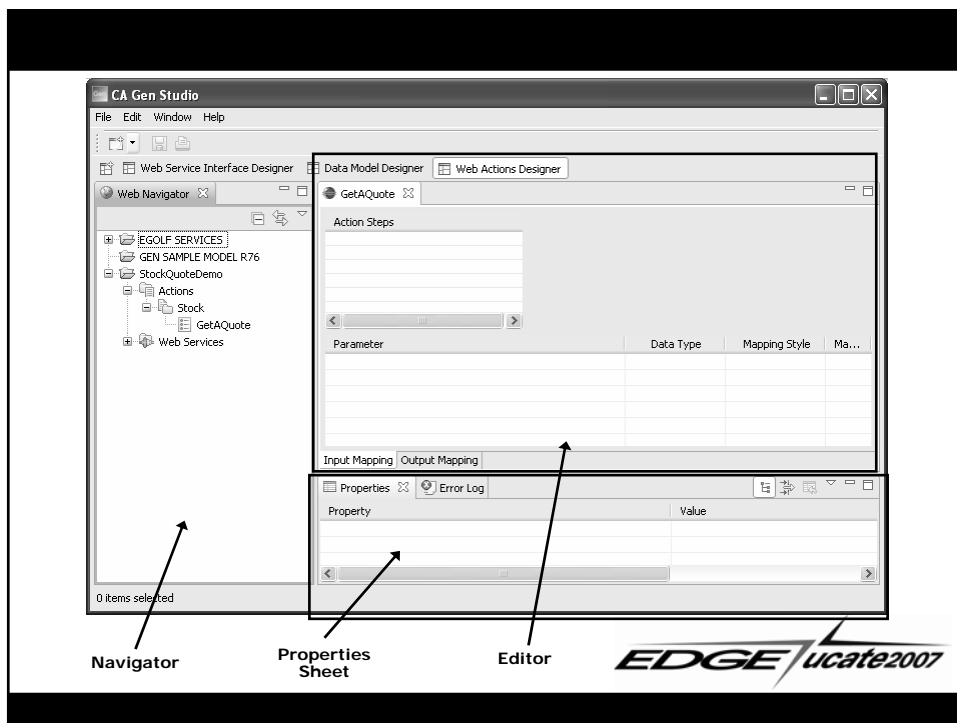
Designers

- Designers will be provided for common features such as Data Modeling, Web Services, or Web Applications.
- Compared to the Toolset, a designer would be a collection of diagrams and tools.
- A designer will have one or more editors which are similar to the Toolset diagrams.
- An editor may be used in more than one designer.
- Each designer has a default perspective which contains the information necessary for the task at hand.



Perspectives

- A perspective is a collection of views that are organized to provide convenient access to the necessary functionality.
- A typical perspective includes a Navigator, Editor, and Properties Sheet.
- Perspectives may be customized and new perspectives may be created to fit the users needs.
- Modified perspectives may be reset to their default configuration.



CA Gen Studio – Designers

- Web Action Designer – Create Web Service Based Web Applications
- Web Service Interface Designer – Create Web Service Interfaces for Procedure Step
- Data Model Designer – Entity Relationship Diagram and additional tools



Web View
(code name)

Web View

- A new product offering that takes advantage of Gen modeling capabilities and opens up integration with 3rd party Web Services.
- Separates the roles of Web Designer and Gen Model Designer. The Web Designer will no longer need to be a Gen modeling expert.
- Uses Dreamweaver to design more elaborate Web content and to customize pages.



Web View

- Uses Web Services to access business logic.
- Communicates to Web Services using Ajax technology.
- Creates Java-based Web Services from Gen models.



Web View Goals

- Web designers can create robust Web Pages with minimal restrictions due to CA Gen.
- Web designer will not be required to learn CA Gen modeling.
- Present Web designers with a design interface that is modern and intuitive.
- Allow Web designers to utilize the most popular business Web design software when designing their Web Pages. (Currently this is predominantly Dreamweaver)



Web View Goals

- Allow access to the CA Gen servers using Web Service technology.
- Allow a single Web Page to access multiple service points, even if the service points are in different Load Modules or Web Applications.



CA Gen Web Clients at a Glance

	Hand-Written (Proxies and Web Service Wizard)	Modeled (ASP.NET & Web Generation Web Clients)	Web View
Pros	Open UI and application logic on the client side	All model-based development advantages	Open UI Design Modeled and third party application logic
Cons	You lose all the benefits of Model Based Development on the client side. If you have a client/server model, you lose the client-side logic in the model	Can only interact with third party applications through EABs	UI Design not in the model on the first release

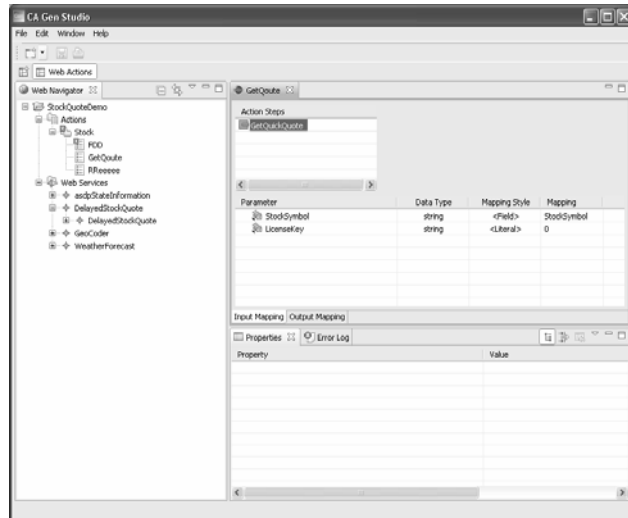
EDGE *ucate2007*

Web View Designers

- Web Action Designer
- Web Service Interface Designer

EDGE *ucate2007*

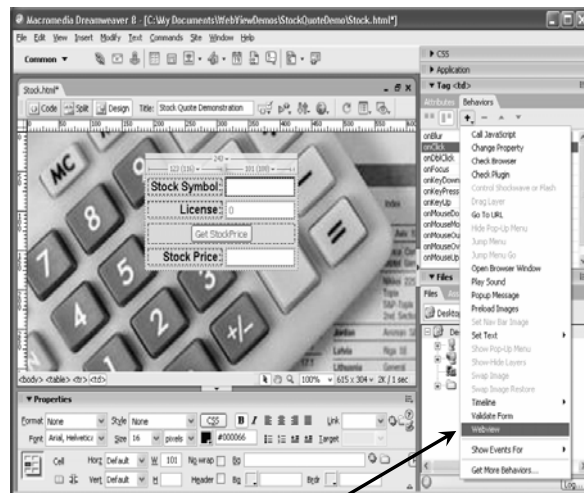
- The Web Action Designer is a feature of CA Gen Studio
- It allows you to create mappings to Web Services
- This includes both Gen-generated (Java) and third party Web Services



Web Action Designer

EDGE *ucate2007*

- Uses Dreamweaver with all its capabilities
- Adds a WebView Behavior to Dreamweaver



Web View – UI Design

EDGE *ucate2007*

Specify Web View Behavior

- As soon as you enter the **WebView** function, CA Gen Studio will be launched
- CA Gen Studio's **Web Action Designer** will allow you to do the mapping to **Web Services**



EDGE *ucate2007*

EDGE *ucate2007*

October 29-31, 2007
Plano, Texas

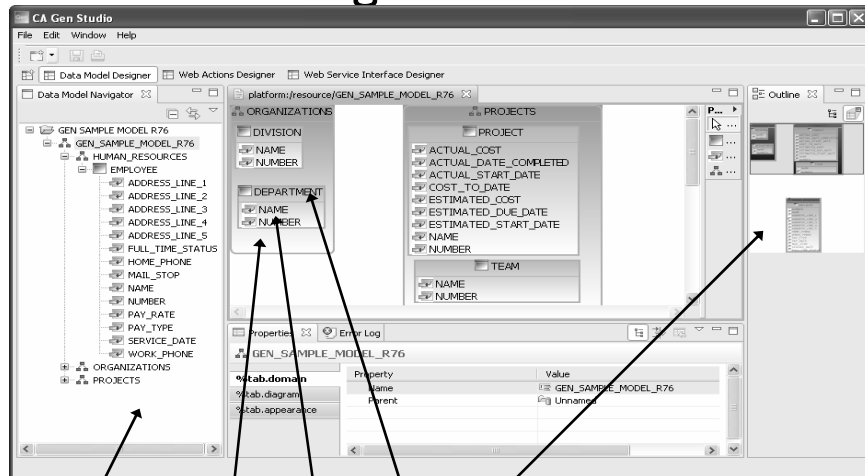
Data Modelling

Data Model Designer

- Provides a modern look and feel.
- Incorporates several DARs that have been requested for the ERD.
- Improves ease of use.
- Adds new features such as Notes and Layouts that are stored in the model.

EDGEucate2007

Data Model Designer



EDGEucate2007

Summary

- Gen Studio is the future direction of the Gen Toolset.
- New designers will be added over the next several releases to make Gen Studio a modern, robust modeling tool.
- Web View technology is introducing a new web product to allow modeled applications to be enhanced with Dreamweaver and 3rd party Web Services.
- The Data Modeling Designer is a new design tool that will provide a modern look and feel and other improvements.

EDGE *ucate2007*

Disclaimer

- CA reserves the right to modify any plans regarding any future deliverables addressed in this presentation.

EDGE *ucate2007*

Demos

- CA Gen Studio Basics
- Web Service Interface Designer
- Web Action Designer
- Data Modeling Designer



Questions and Answers



EDGE Needs Your Feedback!

- Please complete the conference evaluations
- Your feedback/suggestions are necessary to continue to bring you top-notch events
- Thank You for Coming – See you in 2008!

