

Legal Statement

© 2017 CA. All rights reserved. CA confidential & proprietary information. For CA, CA Partner and CA Customer use only. No unauthorized use, copying or distribution. All names of individuals or of companies referenced herein are fictitious names used for instructional purposes only. Any similarity to any real persons or businesses is purely coincidental. All trademarks, trade names, service marks and logos referenced herein belong to their respective companies. These Materials are for your informational purposes only, and do not form any type of warranty. The use of any software or product referenced in the Materials is governed by the end user's applicable license agreement. CA is the manufacturer of these Materials. Provided with "Restricted Rights." Use, duplication or disclosure by the United States Government is subject to the restrictions set forth in FAR Sections 12.212, 52.227-19(c)(1)-(2) and DFARS Section 252.227-7014(b)(3), as applicable, or their successors.

CA Spectrum: Unified Dashboards and Reporting

Sarbdeep Singh

Nagesh Jaiswal

Course Agenda

1

Introduction to CA Business Intelligence (CABI)

2

Unified CA Business Intelligence for Dashboards and Reports

3

Known Limitations

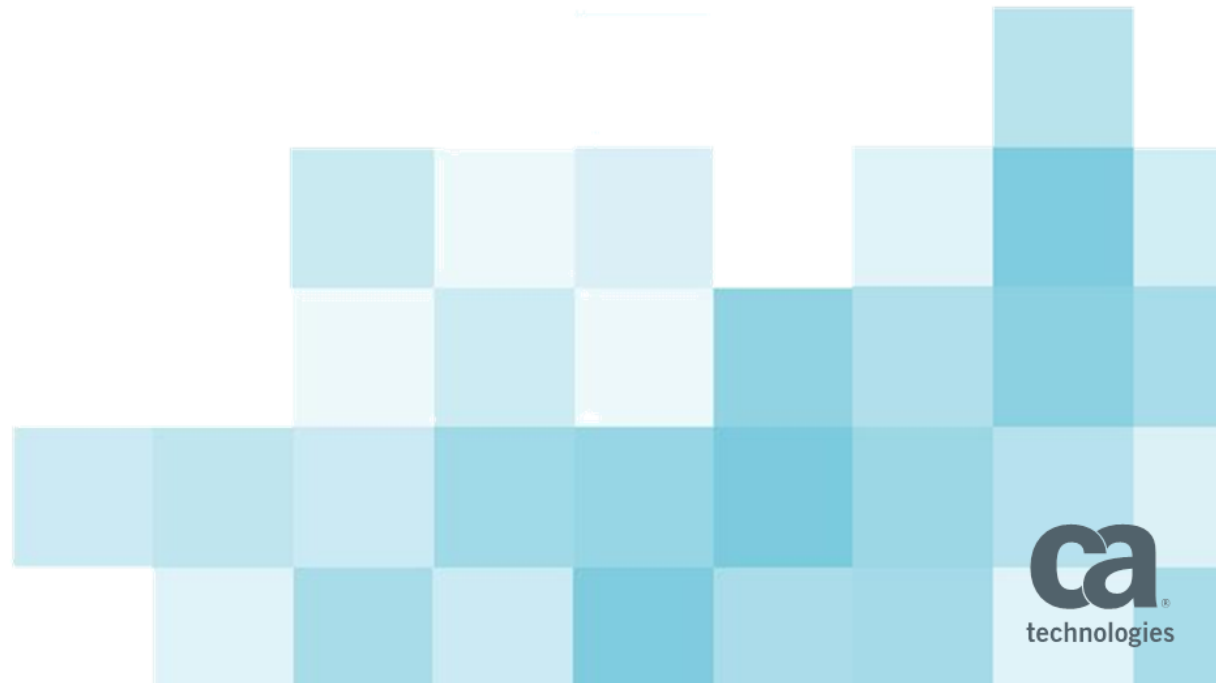
4

Demo

5

Roadmap

Introduction to CA Business Intelligence (CABI)

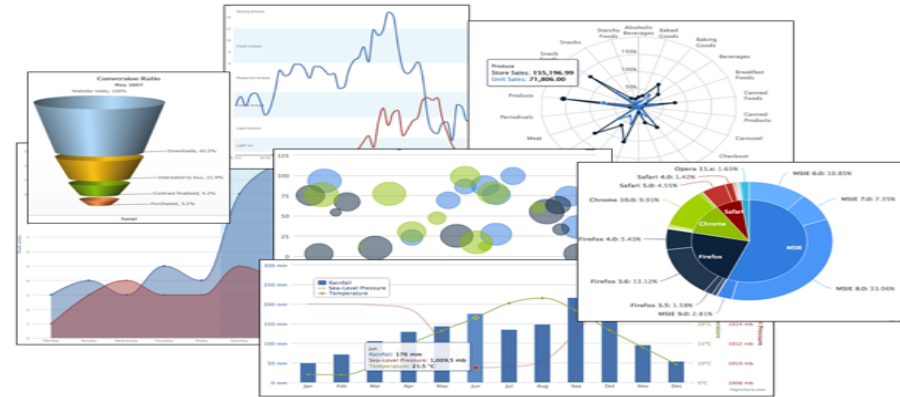


CABI Introduction

- CA Business Intelligence is using TIBCO Jasper Reports Server 6.3

Features

- Robust static and interactive reporting, report server and data analysis capabilities
 - Highly configurable (auto refreshable, change chart style(Lines, bars, pies, bubble etc. on the fly)
 - Schedule reports/dashboards for distribution through email and storage in repository
 - Arrange reports and content to create appealing, data-rich dashboards
 - Easily create new reports based on views designed in intuitive, web-based drag-and-drop Ad Hoc Editor



Works with Any Type of Device

Design Any Report

Date: 11/15/2008 Page 1

SHIP FROM

Name: John D. Delany
Address: 15000 John D. Delany
City/State/Zip: Charlotte, NC, 28215-0000

SHIP TO

Name: ABC Company
Address: 100 Main St
City/State/Zip: New Haven, CT, 06510-0000

CARRIER NAME: Roadway
Trailer number: 1234567890
Seal number: 00000000000000000000

THIRD PARTY FREIGHT CHARGES DUE TO:

Name: TRUCK RENTAL NAME
Address: 1 MAIN STREET
City/State/Zip: Charlotte, NC, 28215-0000

SPECIAL INSTRUCTIONS:

Customer Order Information

QTY	TYPE	QTY	TYPE	WEIGHT	HAS	CLASS
1	1	1	1	1	1	1

GRAND TOTAL

CARRIER INFORMATION

NAME: ABC COMPANY
ADDRESS: 100 MAIN ST
CITY/STATE/ZIP: NEW HAVEN, CT, 06510-0000

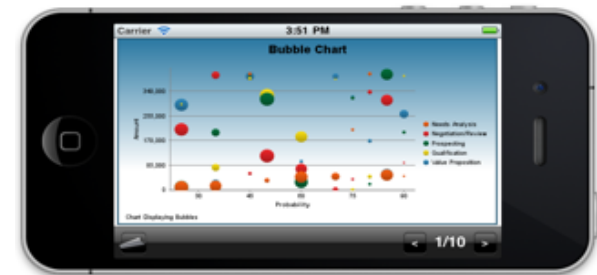
SHIPMENT INFORMATION

DATE: 11/15/2008
TIME: 10:00 AM
CARRIER: ROADWAY
TRAILER: 1234567890
SEAL: 00000000000000000000

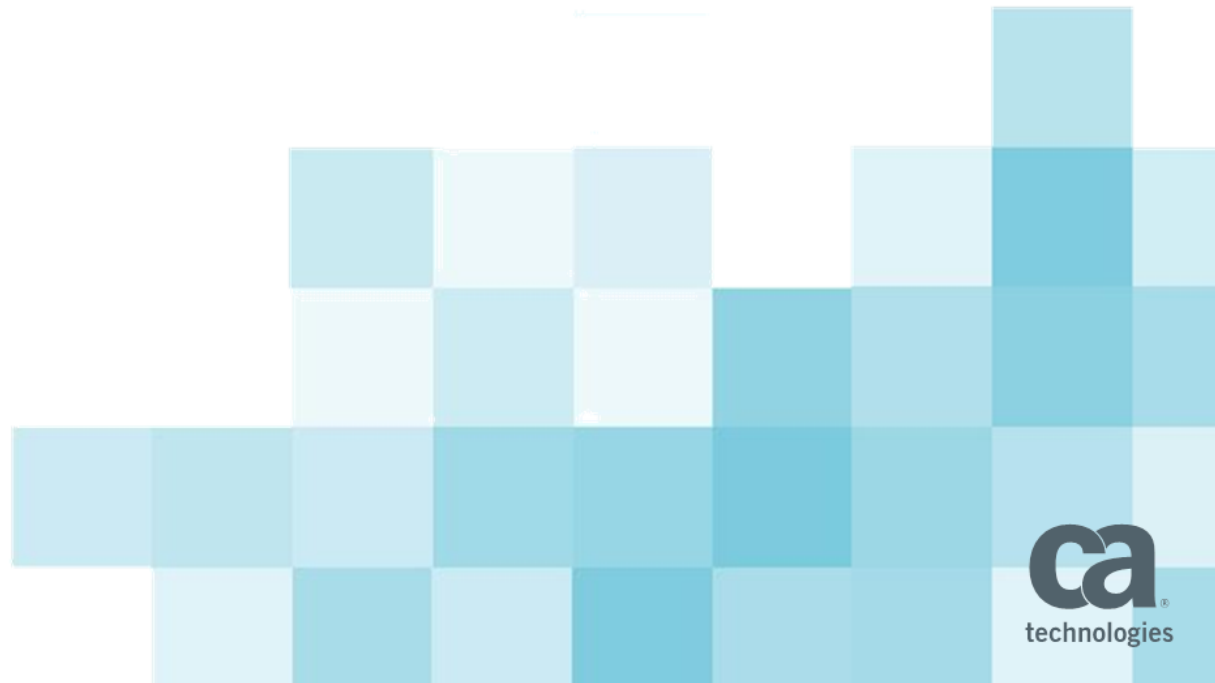
CARRIER SIGNATURE/DATE

SHIPMENT INFORMATION

DATE: 11/15/2008
TIME: 10:00 AM
CARRIER: ROADWAY
TRAILER: 1234567890
SEAL: 00000000000000000000

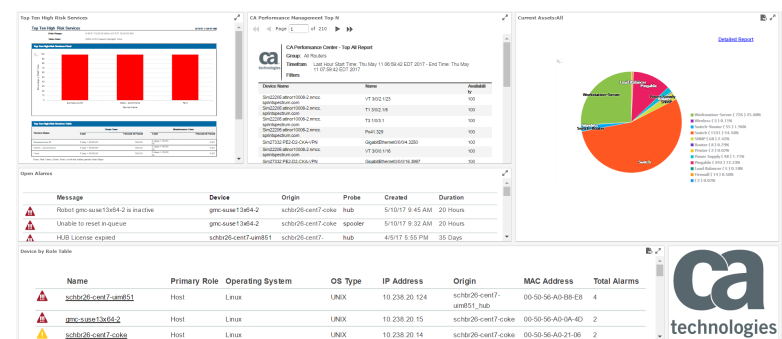
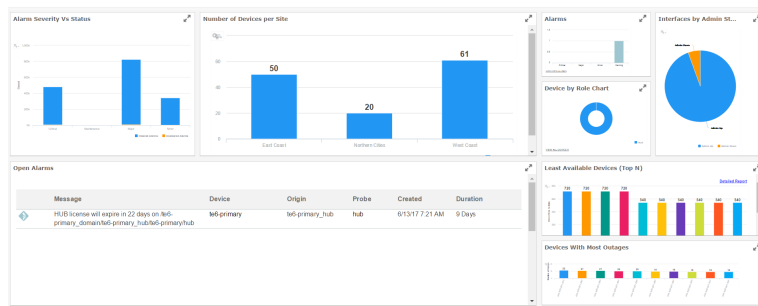


Unified CA Business Intelligence for Dashboards and Reports



Unified CA Business Intelligence for Dashboards and Reports

- Reduce TCO
 - Single Server needed instead of up to 4 (Spectrum, SOI, PM, UIM)
- Single User interface with relevant information from multiple sources to target different personas (Executive / Ops Dashboard).
- Enable dashboards that span multiple CA products, giving the customer better insight into their business
- Ease of use to create unified dashboards (drag/drop dashlets)
- Data segregation / security
- Schedule reports/dashboards via email-file share



Unified CABI Server Requirements

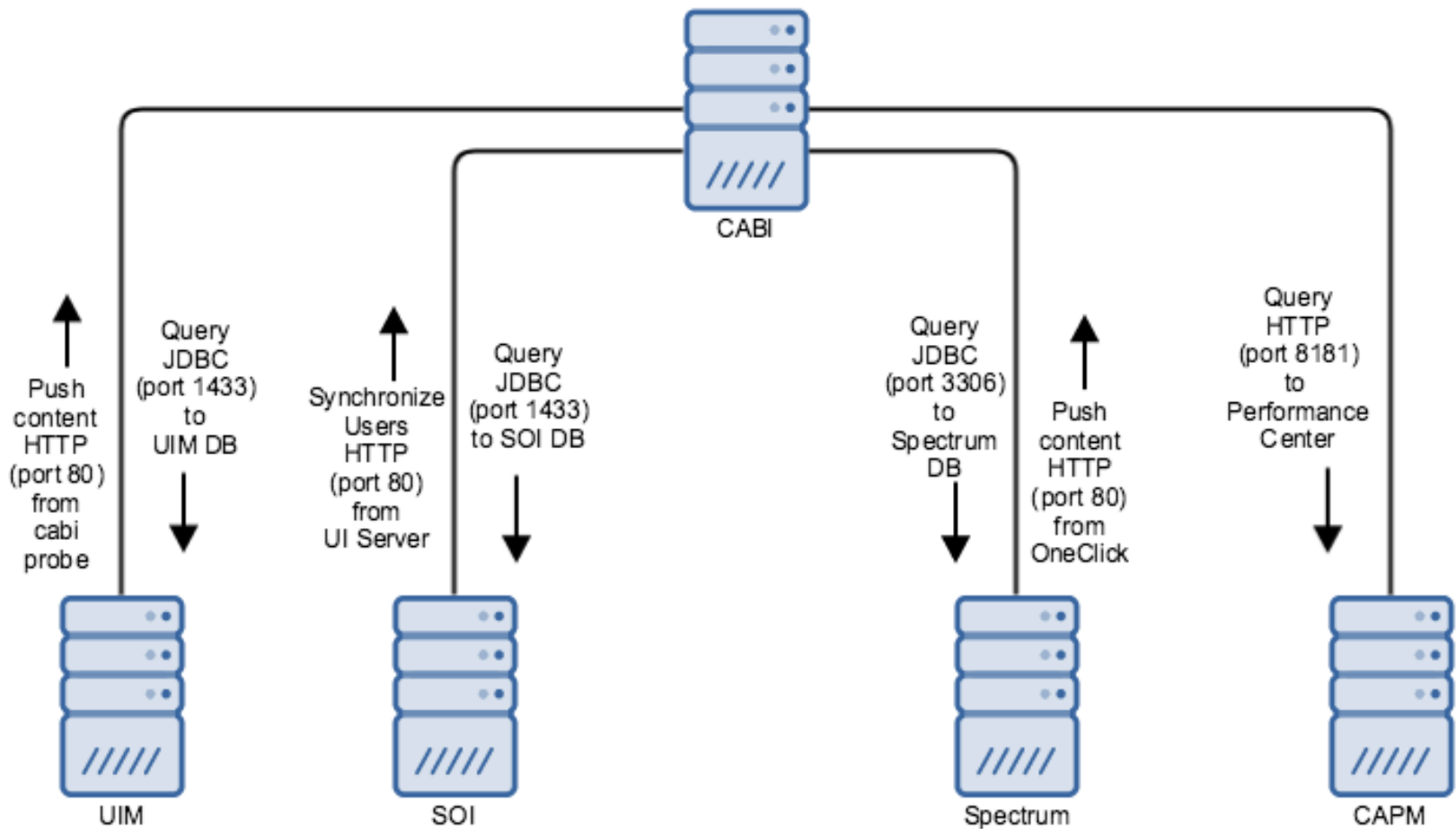
Required

- Windows 2012 or RHEL 7
- 4 CPUs*
- 8 GB RAM
- 100 GB Disk
- Embedded Tomcat
- Connectivity to:
 - CAPM Open API
 - SOI DB
 - Spectrum DB
 - UIM DB

Recommended

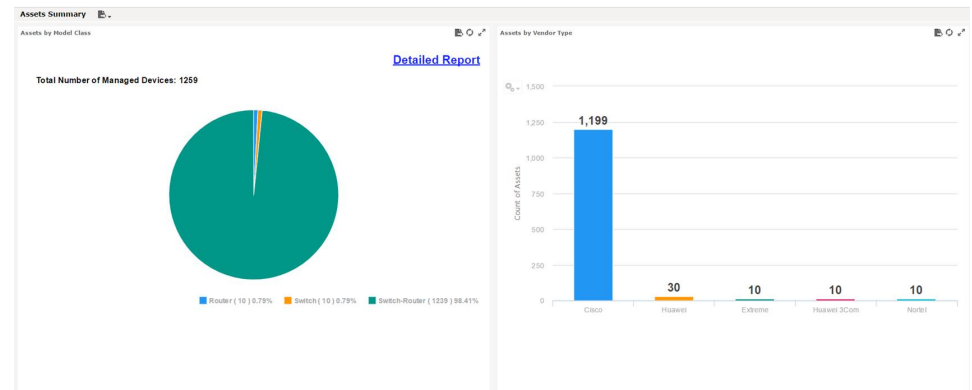
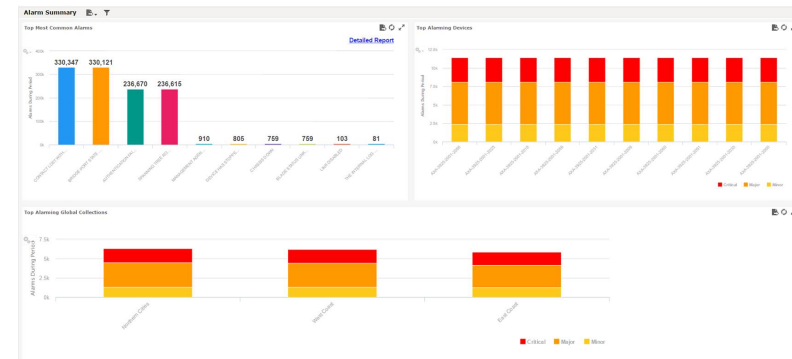
- 16 GB RAM*
- Embedded PostgreSQL*

System Architecture and deployment scenario

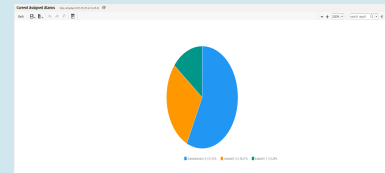
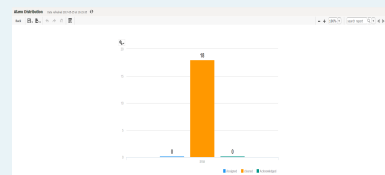
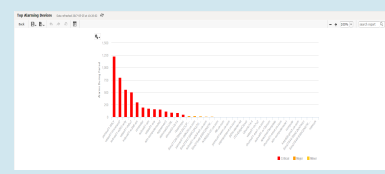
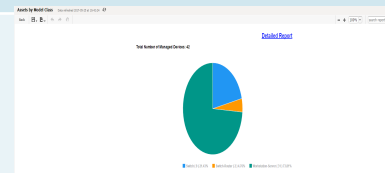



Overview of CABI for CA Spectrum

- Reports capabilities provided since CA Spectrum version 10.1.1
- Spectrum users and 'accounts' automatically synchronized to CABI users and 'organizations'
- More than 40 reports shipped Out of the Box. [Click](#)
- Out of the box Dashboard
 - Active Alarms Summary
 - Alarm Summary
 - Alarm Trends
 - Assets Summary
 - Device Availability Summary
 - Events Summary
 - NCM Dashboard
 - Ports Summary and Chassis Assets
 - Services and SLA Summary



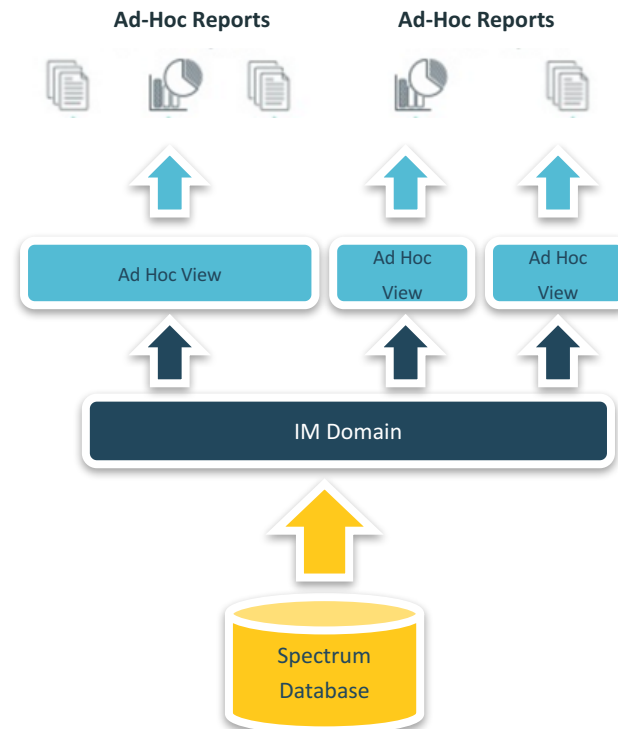
Spectrum Out of the Box Dashlet Examples

Dashlet Name	Description	Image
Current Assigned Alarms	Displays current assigned alarms.	
Alarm Distribution	List of alarms for all devices and models that satisfy criteria of alarm condition and minimum duration threshold.	
Top Alarming Devices	Displays top alarming devices	
Assets By Model Class	Displays a breakdown of currently managed devices by model class.	
Assets By Vendor Type	List of Assets sorted/grouped by vendor name	

Ad-Hoc Reporting In Spectrum


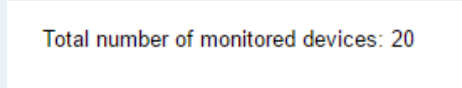
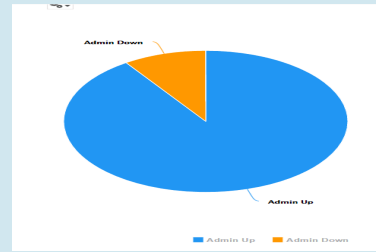
Introduction to Data sources and Domains

- For assets, availability and events we can use the Spectrum:
 - Asset Domain
 - Availability Domain
 - Event Domain



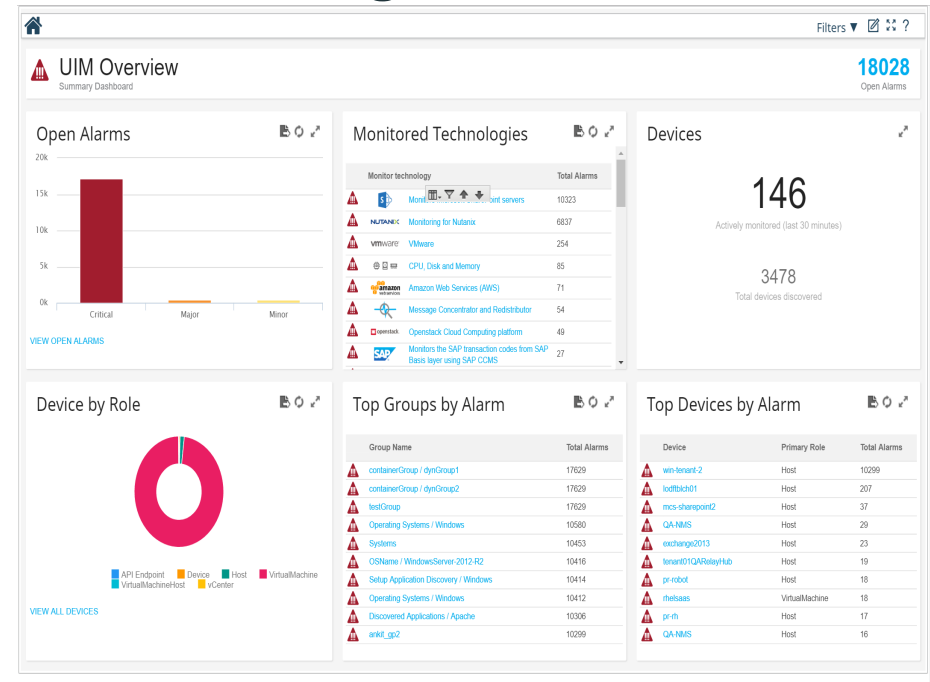
Overview for CA Performance Management

- Report capability introduced since CA Performance Management 3.1
 - Top N Report
- Dashboard:
 - Out of the box dashlets for data usage (monitored devices / interfaces usage)

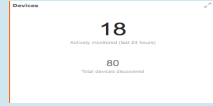

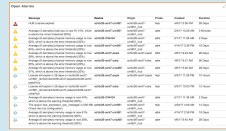
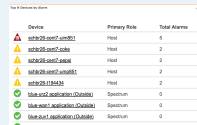
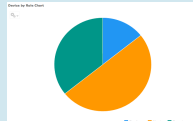
Dashlet Name	Description	Image
Number of Devices per Site	CA Performance Management dashlet to view number of monitored devices per site	
Total Number of Devices	CA Performance Management dashlet to view total number of monitored devices	
Interfaces by Admin Status	CA Performance Management dashlet to view interfaces by their Admin Status as a pie chart	

Overview for CA Unified Infrastructure Management

- Probe based deployment model
- Single sign on via UMP
- CA UIM users and ‘accounts’ automatically synchronized to CABI users and ‘organizations’
- Out-of-the-box context aware dashboards with drilldown and drill across type rich features
- For CA UIM 8.5.1, we also have technology specific dashboards:
 - AWS, Docker, Nutanix, OpenStack, SAP
- Ad hoc reporting against CA UIM data



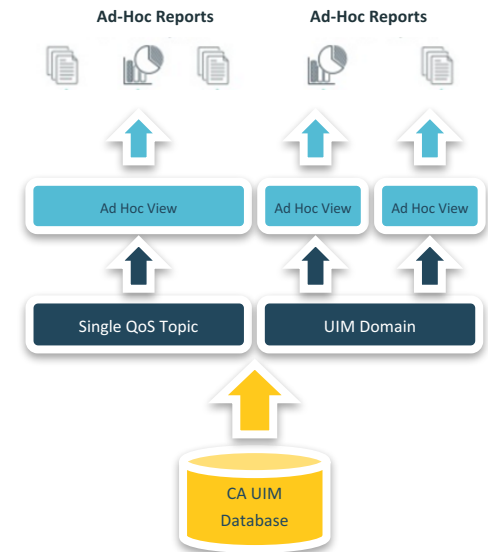
CA Unified Infrastructure Management Dashlet Examples

Dashlet Name	Description	Image
Alarms	Bar chart of the number of open alarms by severity	
Open Alarms	Table of detailed alarm information for each open alarm, sorted by alarm severity	
Top N Devices by Alarm	Table of devices with open alarms, sorted by alarm severity	
Device by Role Chart	Pie chart showing distribution of roles	
Devices	Shows counts of actively monitored devices and total devices	

Ad-Hoc Reports in CA Unified Infrastructure Management

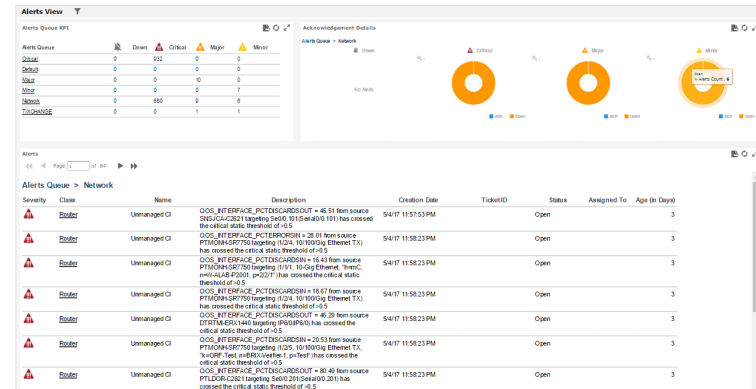
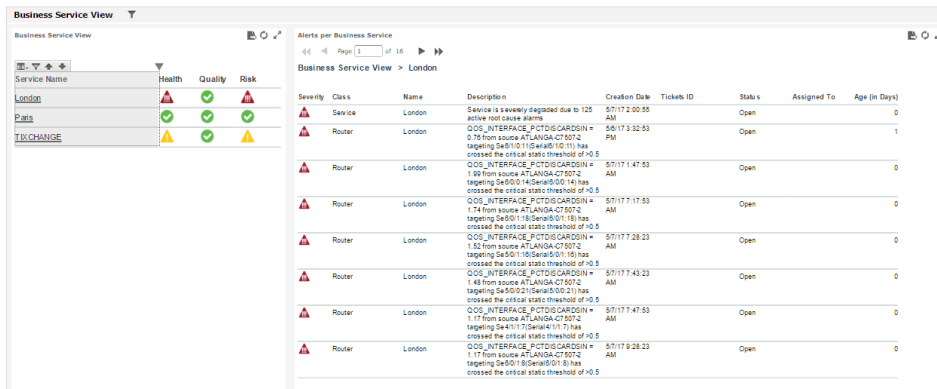
Introduction to Data Sources and Domains

- For alarms, devices and groups, we can use the 'UIM Domain'
- For QoS data we can use the 'Single QoS Topic'
 - Limited to a single device

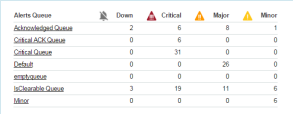

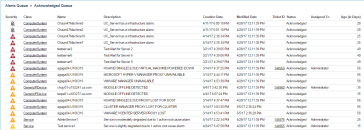
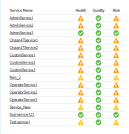



Overview for CA Service Operations Insight

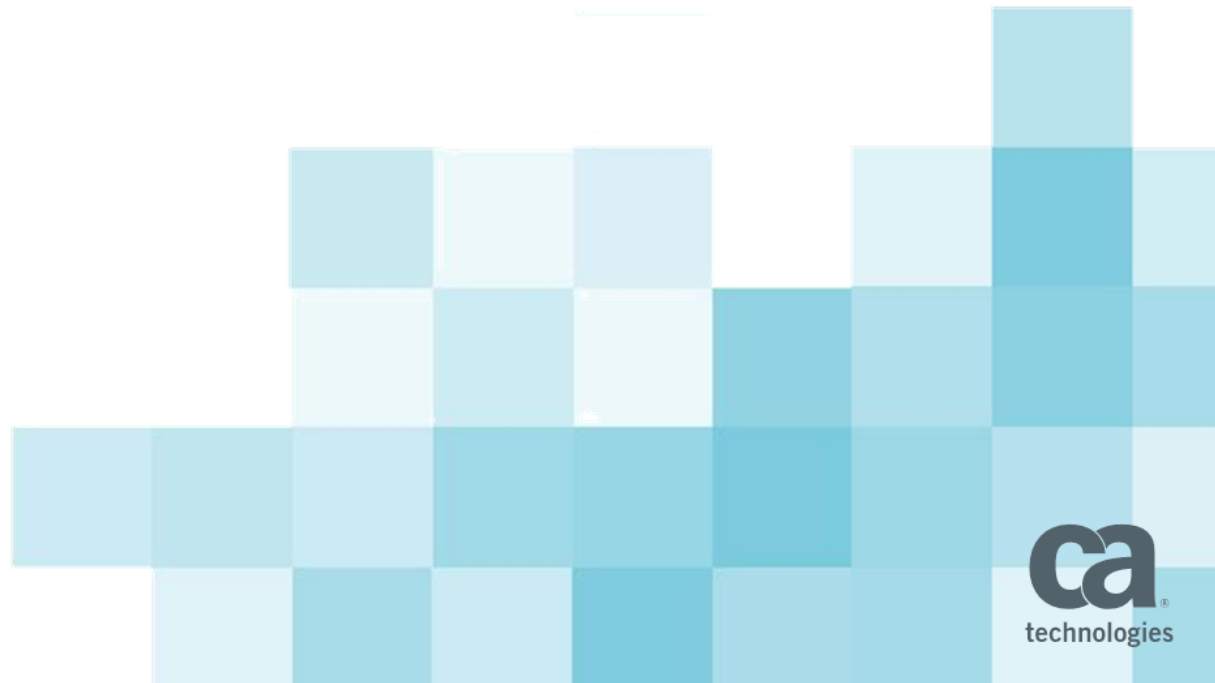
- Report capability introduced from CA Service Operations Insight 4.0 CU1
- CA Service Operations Insight users and 'accounts' automatically synchronized to CA Business Intelligence users and 'organizations'
- More than 16 reports shipped out-of-the-box
- Out-of-the-box dashboards/dashlets for business services and alarm queues



CA Service Operations Insight Dashlet Examples

Dashlet Name	Description	Image
Alerts Queue KPI	Displays a list of alerts queues sorted by severity	
Acknowledgement Details	Displays a list of alerts that are acknowledged in a pie chart	
Alerts	Displays detailed alert information for each alert queue	
Business Service View	Displays a list of services	
Alerts per Business Service	Displays detailed alert information for each service	

Known Limitations & Documentation



Known Limitations

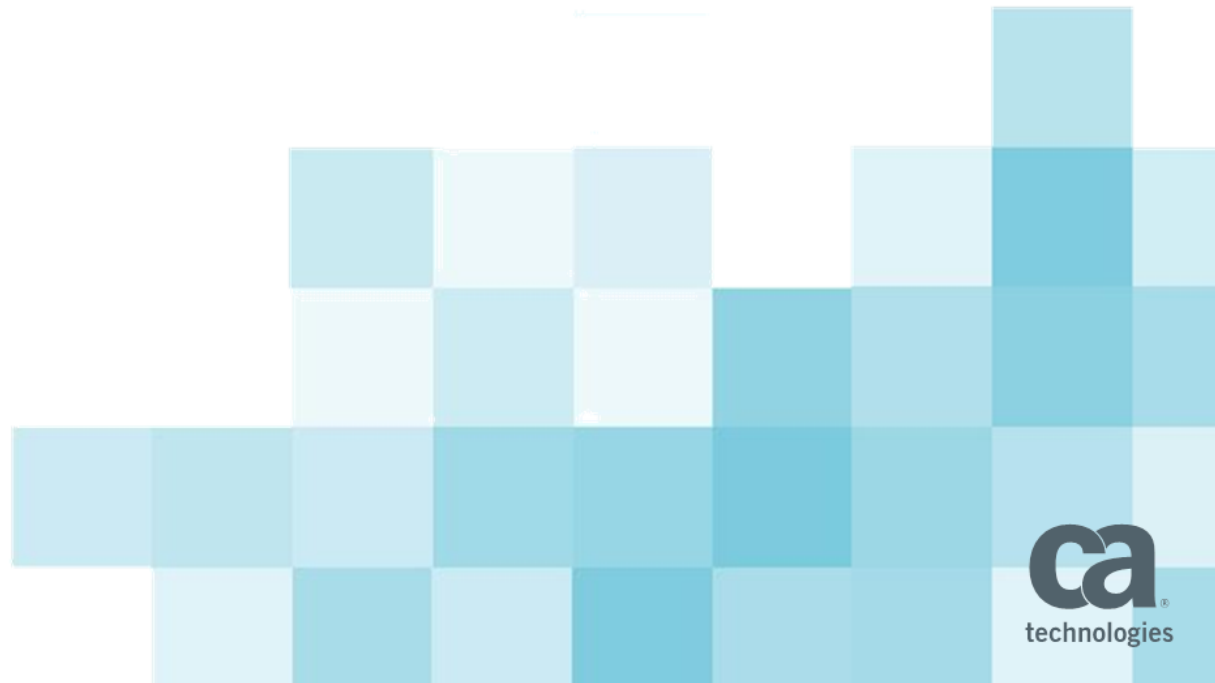
- LDAP not supported
- Java class path length issues on Windows
- Fresh installation of Unified CABI Server needed
 - Upgrade from previous Jasper Soft CABI not supported

Documentation link:

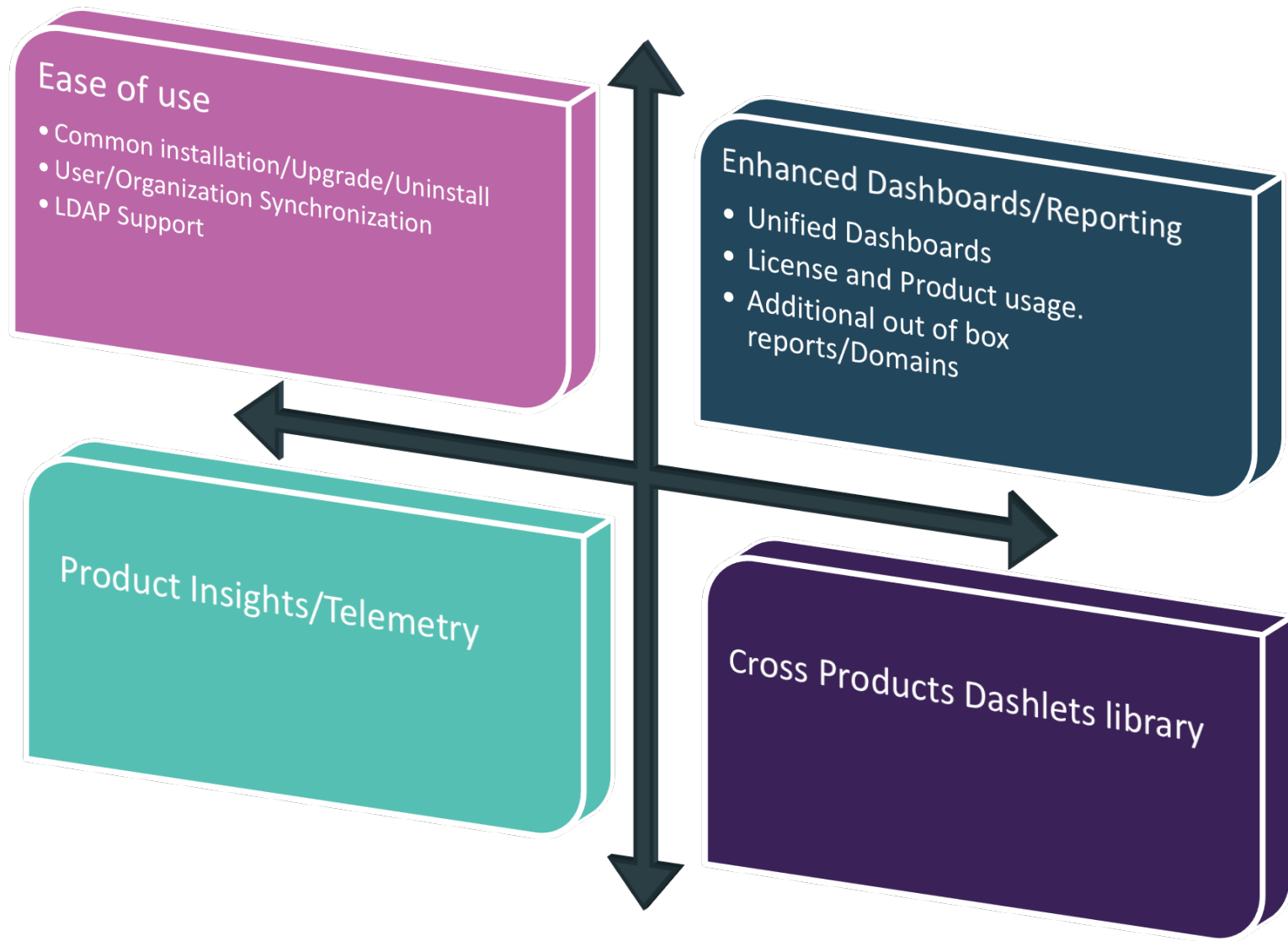
- [Unified Dashboards and Reporting for Infrastructure Management](#)



Roadmap



What's next



Questions?

