



# CM WebClient Mobile for CA Plex

Technology and Demonstration

# CM First Group

- Information Technologies Services and Product Company
- Focus on Application Modernization on IBM environments
- Headquartered in Switzerland, Operations in USA, Italy and France
- 35 employees / over 400 customers
- CA Technologies for CA Plex / CA 2E / CA Repository
  - Sales, Services, CA SMART Certified Products
- CM First Products add value to CA Technologies Products
- Worldwide Sales through partner network

# Application Development Solutions

Enterprise Architecture – Metadata

CM Meta Analytics for  
CA Repository

**Application Development Tools**

Requirements

Analysis

CM  
M3

Modeling

IDE / Code

CM  
WebClient

QA / Test

Release

CA Plex / 2E

Worksoft  
Certify for  
CA Plex

Application Performance  
Availability  
and Monitoring

CA  
APM

Application Lifecycle Management  
CM  
MatchPoint

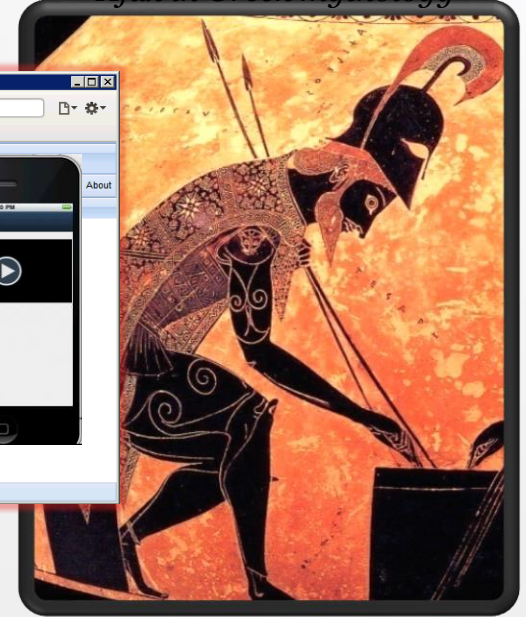
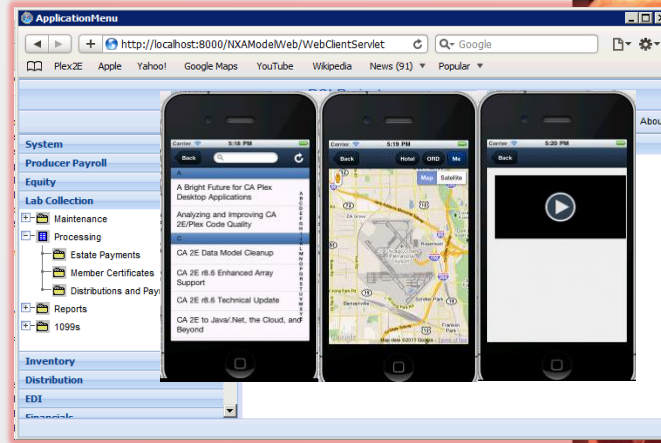
PTC/MKS Integrity for i  
(CA 2E CM)

Project and Portfolio Management

# CM WebClient Mobile Presentation Agenda

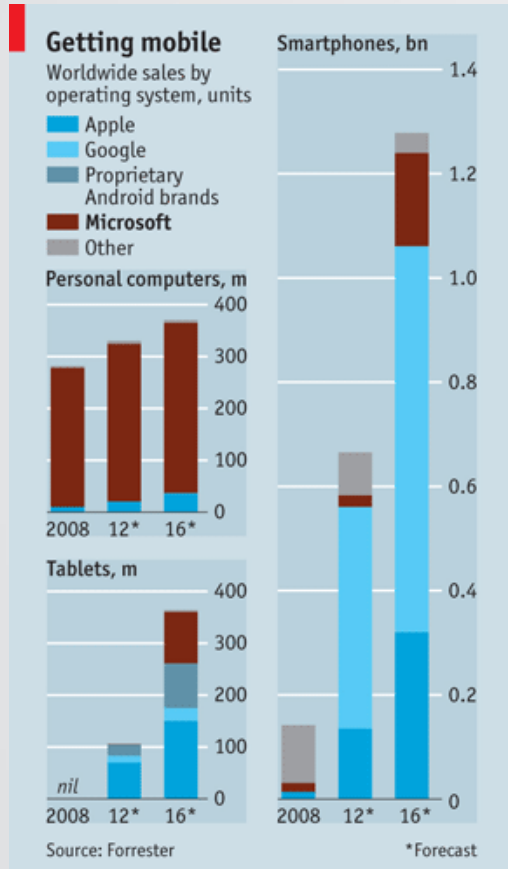
- Technology
- Features
- Demo
- Questions

*Ajax in Greek mythology*





# Technology



- Microsoft currently has dominant share of desktop
  - And will eventually have significant tablet and phone share
- But Apple and Google dominate total devices
- Future-proof your apps across **all platforms** by adding **JavaScript** and **HTML5** to your desktop technology – **CA Plex + CM WebClient**

# AJAX / JavaScript / HTML5 / Hybrid is the new standard



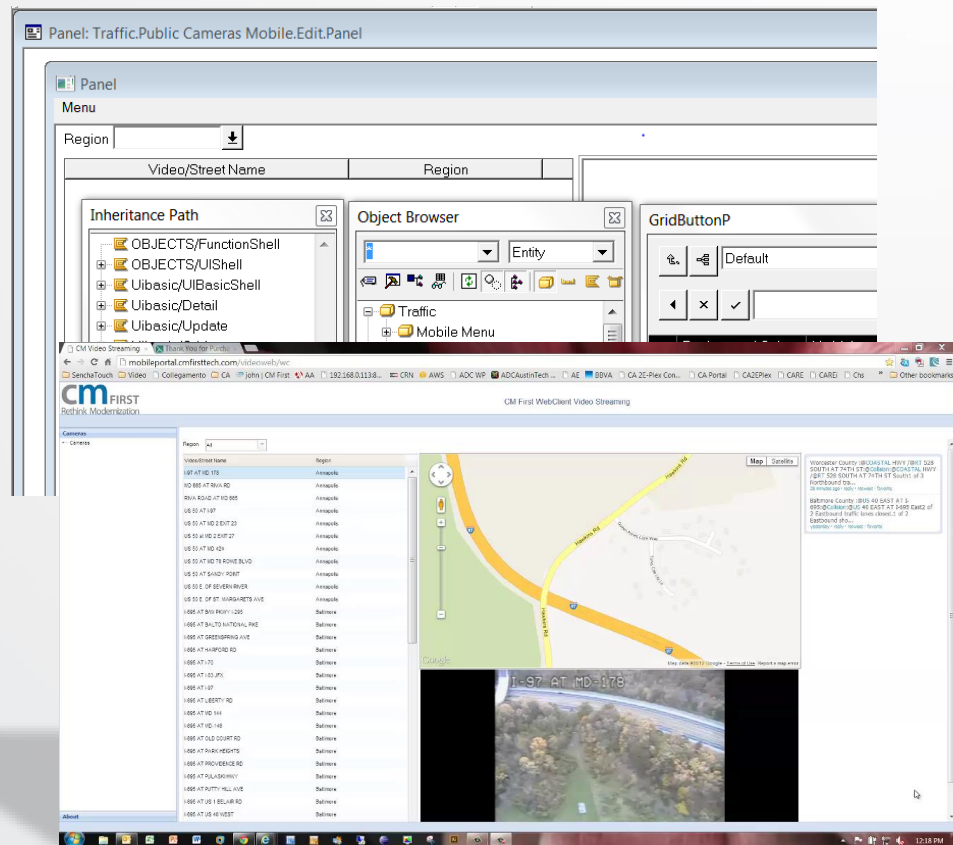
“Ajax remains the dominant RIA of choice, and HTML5 is poised to expand the power and flexibility of the browser only approach”

Gartner Group

# Code Once, with Existing Skills

= Much less cost and risk

- Use Your Patterns
  - Foundation, Active, ...
  - OBASE (or your own)
  - Using Existing Designs
- A Unified Code Base
  - Client-Server / 5250
  - Web
  - Mobile
- WYSIWG Page Design
  - \*within Plex limitations

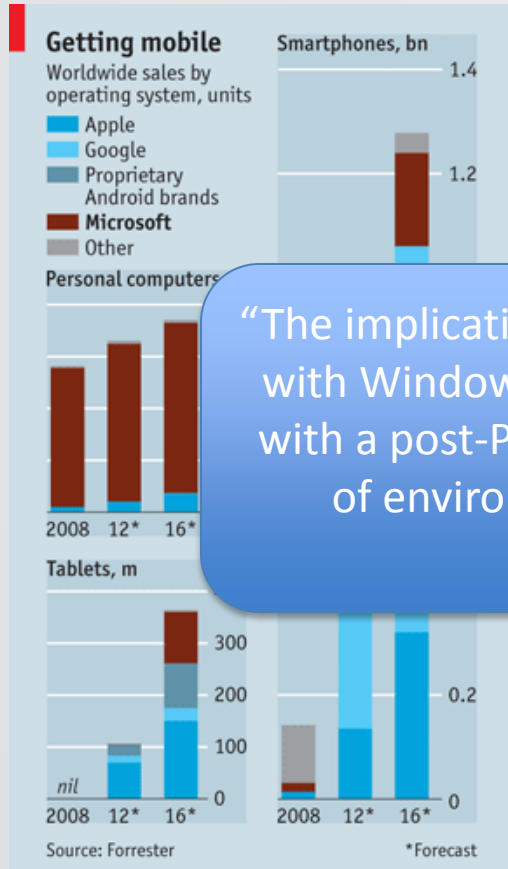




# Develop Rich, Standards Based Apps

- Browser/Web Targets
  - Chrome, Safari, IE, Firefox
    - No Plug Ins!
  - Portals (Websphere, Liferay, ...)
- Mobile Targets
  - iPhone, iPad, Android, BB6+, Windows
- Server Targets
  - Websphere, Tomcat, JBoss, ...
  - Any back end Plex Supports
    - .NET, Java, IBM i/p, Unix, Linux, ...





“The implications for IT is that the era of PC dominance with Windows as the single platform will be replaced with a post-PC era where Windows is one of a variety of environments that IT will need to support,”

Gartner 2013

- Microsoft currently has dominant share of desktop

– And will eventually have significant

dominate

is across all platforms by adding JavaScript and HTML5 to your desktop technology – CA Plex + CM WebClient

# Definitions

- **Native apps** are built for a specific platform with the platform SDK, tools and languages, typically provided by the platform vendor (e.g. XCode/Objective-C for iOS, Eclipse/Java for Android, Visual Studio/C# for Windows Phone).
- **Mobile Web** apps are server-side apps, built with any server-side technology (PHP, Node.js, ASP.NET) that render HTML that has been styled so that it renders well on a device form factor.
- **Hybrid apps**, like native apps, run on the device, and are written with web technologies (HTML5, CSS and JavaScript). Hybrid apps run inside a native container, and leverage the device's browser engine (but not the browser) to render the HTML and process the JavaScript locally. A web-to-native abstraction layer enables access to device capabilities that are not accessible in Mobile Web applications, such as the accelerometer, camera and local storage

# Hybrid Predictions

- April 16, 2013 - Gartner Recommends a Hybrid Approach for Business-to-Employee Mobile Apps

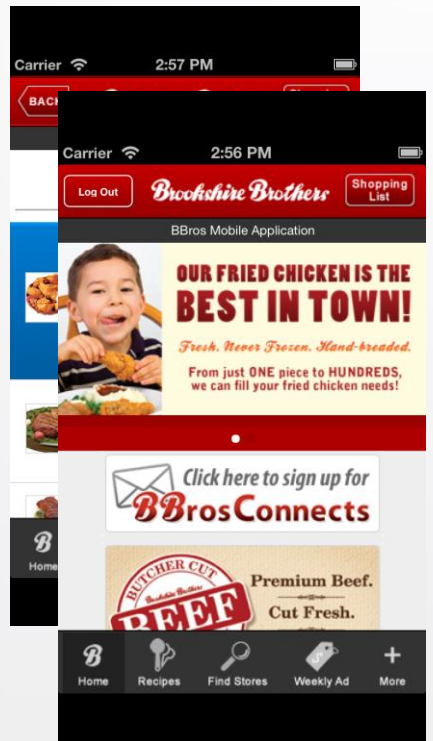
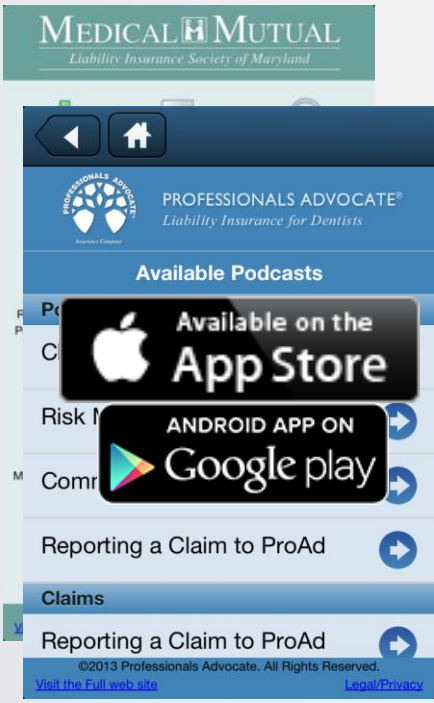
Category	Native Hybrid Web		
Consumer	40	40	20
Enterprise	10	60	30

Table 1  
Consumer/Enterprise Split in 2015  
Source: Gartner (November 2012)

# Pragmatic Reasons

- Skills required – you probably already know HTML and CSS (or someone at your org does)
- Code/Test once (mostly)
- Performance and capabilities generally equal native

# CM First Customer Example Touch Apps





# Current Mobile Features – 1.8.2



## Mobile Features

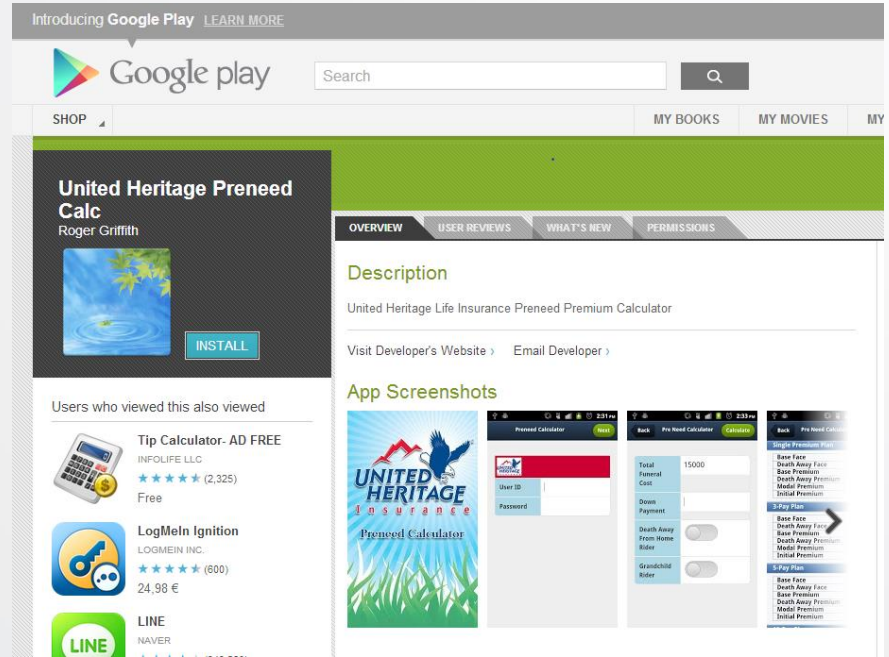
- Icon Menus
- Themes
- Advanced Geo
- Audio
- Video
- Email
- Address Book
- Local Storage
- Encryption
- Facebook Login
- Camera
- Signature
- Adobe Cordova (PhoneGap)
- HTML Forms
- Embedded pages
- Upload
- Mobile Service Pack Nov 2013



# Device Support / PhoneGap



- Wrap HTML5 app
- Device support
  - Camera, address book, etc.
- App Stores
  - Google Play, iTunes





# Demo

# Demo Scenario

CM Video Streaming - Thank You for Purchasing

mobileportal.cmfirsttech.com/video/web/wc

SenchaTouch Video Collegamento CA John | CM First AA 192.168.0.113:8... CRN AWS ADC WP ADCAustinTech ... AE BBVA CA 2E-Plex Con... CA Portal CA2EPlex CARE CAREI Cns Other bookmarks

**cm FIRST**  
Rethink Modernization

CM First WebClient Video Streaming

Cameras

Region All

Video/Street Name	Region
I-97 AT MD-178	Annapolis
MD 885 AT RIVA RD	Annapolis
RIVA ROAD AT MD 885	Annapolis
US 50 AT I-97	Annapolis
US 50 AT MD 2 EXIT 23	Annapolis
US 50 AT MD 2 EXIT 27	Annapolis
US 50 AT MD 424	Annapolis
US 50 AT MD 70 ROWE BLVD	Annapolis
US 50 AT SANDY POINT	Annapolis
US 50 E OF SEVERN RIVER	Annapolis
US 50 E OF ST. MARGARETS AVE	Annapolis
I-695 AT BAY PKWY I-295	Baltimore
I-695 AT BALTO NATIONAL PIKE	Baltimore
I-695 AT GREENSPRING AVE	Baltimore
I-695 AT HARFORD RD	Baltimore
I-695 AT I-70	Baltimore
I-695 AT I-83 JFX	Baltimore
I-695 AT I-97	Baltimore
I-695 AT LIBERTY RD	Baltimore
I-695 AT MD-144	Baltimore
I-695 AT MD-146	Baltimore
I-695 AT OLD COURT RD	Baltimore
I-695 AT PARK HEIGHTS	Baltimore
I-695 AT PROVIDENCE RD	Baltimore
I-695 AT PULASKI HWY	Baltimore
I-695 AT PUTTY HILL AVE	Baltimore
I-695 AT US 1 BELAIR RD	Baltimore
I-695 AT US 40 WEST	Baltimore

Map Satellite

Google

Map data ©2012 Google - Terms of Use Report a map error

I-97 AT MD-178

Worcester County :8COASTAL HWY /BRT 528 SOUTH AT 74TH ST@COLLINS@COASTAL HWY /BRT 528 SOUTH AT 74TH ST South of 3 Northbound tra...  
28 minutes ago · reply · newest · favorite

Baltimore County :BUS 40 EAST AT I-695@COLLINS@US 40 EAST AT I-695 East of 2 Eastbound traffic times closest of 2 Eastbound sho...  
yesterday · reply · newest · favorite

About

cm FIRST  
Rethink Modernization

12:18 PM



# What is Next?

# WebClient 2.0 – 2014

On the drawing board

- Planned Feature Set
  - More Mobile Templates
  - Tablet Optimized Templates
  - Offline storage model



# Enterprise JavaScript

Google Web Toolkit  
Showcase of Features

Text Input

Popups

Panels

- Decorator Panel
- Flow Panel
- Horizontal Panel
- Vertical Panel
- Absolute Panel
- Dock Panel
- Disclosure Panel
- Tab Panel
- Horizontal Split Panel
- Vertical Split Panel

Example CSS Style Source Code

CA 2E/Plex 2011 New Tab

cmfirst.jkerns.com

Panel

Integer A

Integer B

Result

+ - \* / %

POC of Plex Application  
Running Directly on  
Device – No web  
server or connection  
needed, with local  
storage

# Q&A, Discussion

<http://cmfirstgroup.com>

