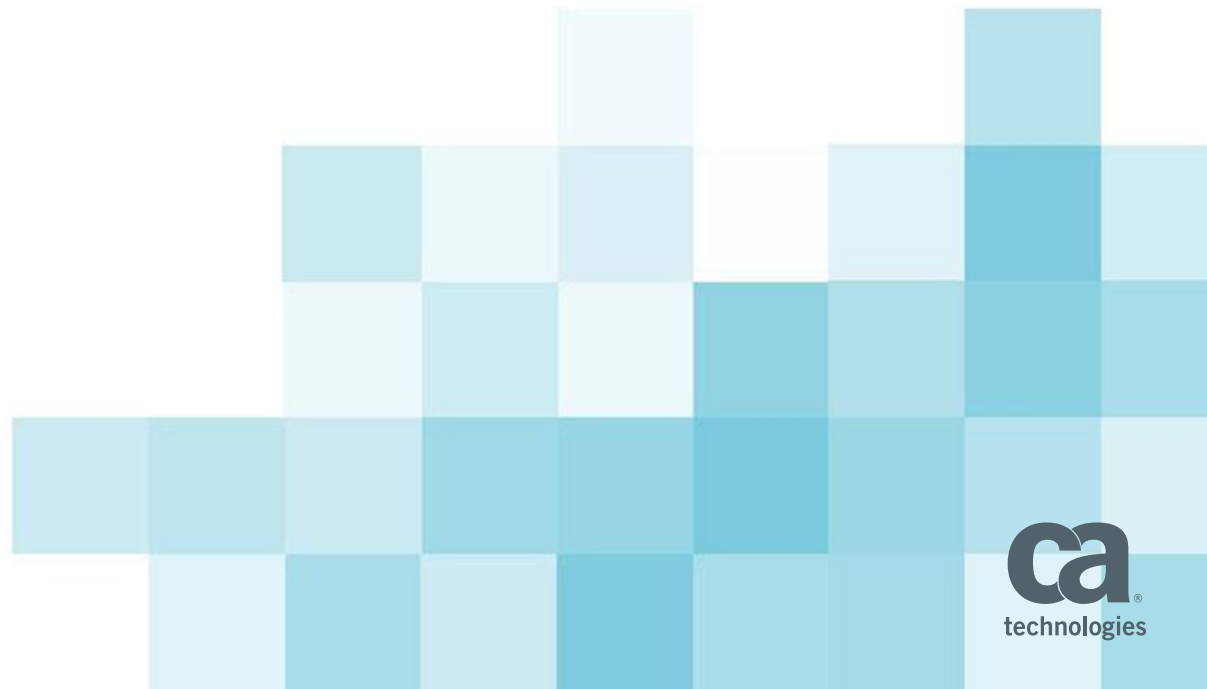


CA Chorus Software Manager (CSM)

Summer Spaulding
CA Technologies

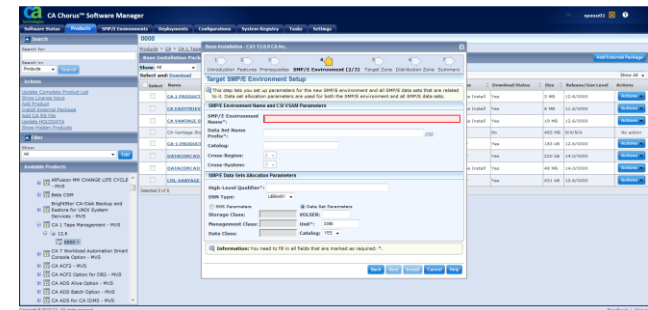
2015 SUGE Conference
October 2015



CA Chorus Software Manager (CSM)

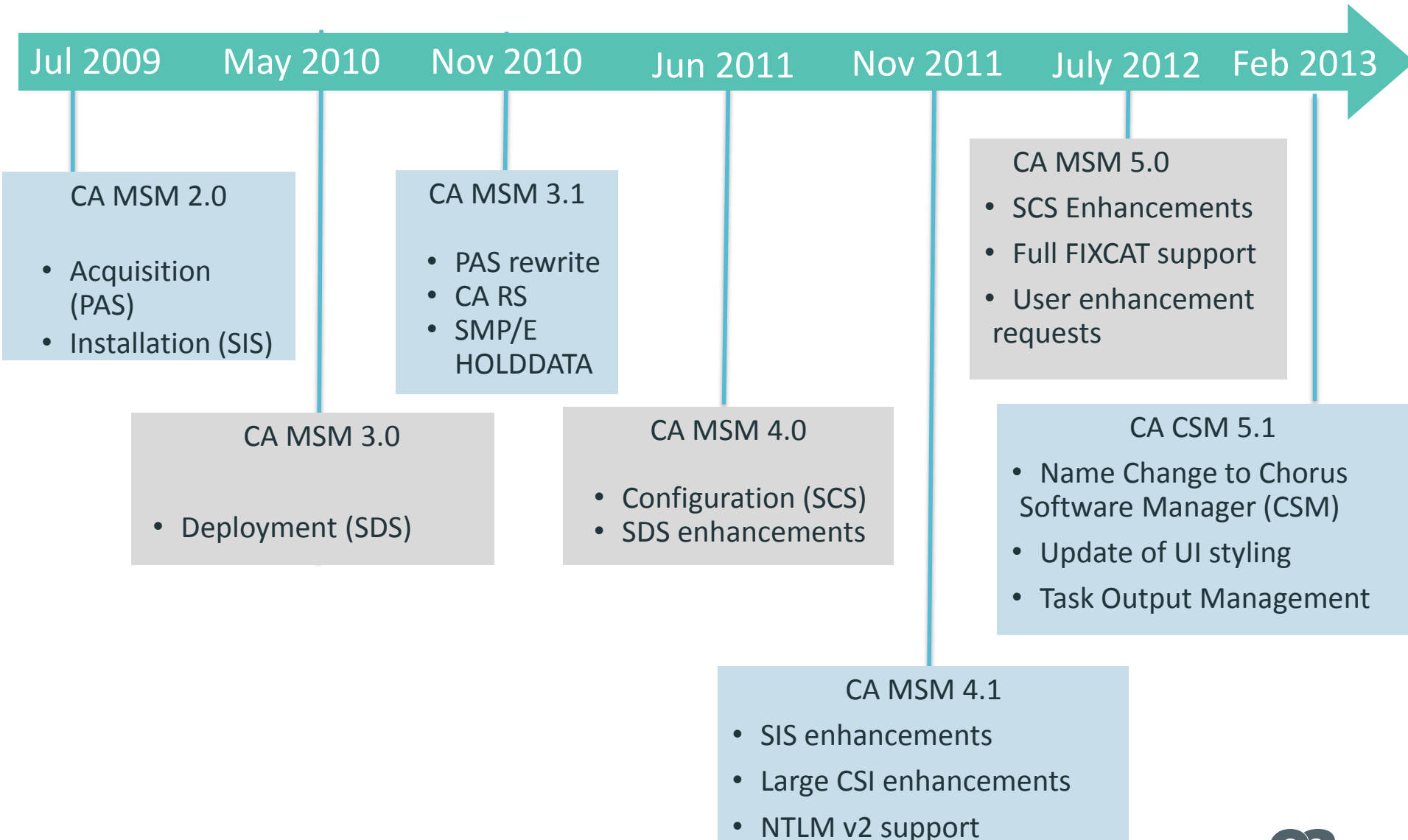
What it does

- **Downloads software products and service from CA Support Online**
 - Includes other artifacts (e.g. PDFs, letters, etc.)
 - Ability to schedule downloads, particularly CARS and HOLDDATA
- **Installs products into new or existing CSIs**
- **Evaluates and installs maintenance into CSIs**
 - Selecting one or more PTFs/APARs
 - Using CA Recommended Service (CARS) for selection
 - Using FIXCAT for selection
- **Installs “External Maintenance” and “External Packages”**
 - e.g. ++APARs, ++USERMODS
 - e.g. Beta products, other vendor products
- **Migrates preexisting CSIs into CA CSM**
- **Deploys product target libraries to local or external systems**
- **Configures deployed products for production use**



Available at no additional cost for customers with current CA maintenance agreements

CA Chorus Software Manager (CA CSM) history



Current Version - CA CSM v6

GA April 28, 2014

New Features

- Product Configuration without requiring a deployment
- Upgrade to CA Datacom/AD Version 14.0
- Performance improvements when accessing the SMP/E environment
- Apply CA RS Maintenance to Multiple SMP/E Environments
- Ability to schedule within UI maintenance download and SMP/E RECEIVE by CSI/Installed Product
- Select zones to use when CSI has multiple zones
- Support for Secure FTP for transmission during deployment
- Product Configuration Import under Configuration Services

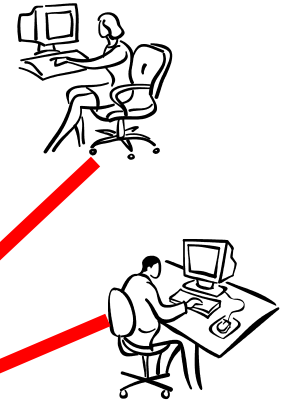
Network Configuration

Internet

Firewall

Corporate
Intranet

System
Programmers



<http://yourmainframe:yourport/MSM/>

Chorus Software Manager

Chorus Software Manager Web Based UI

Product
Acquisition
Service
PAS

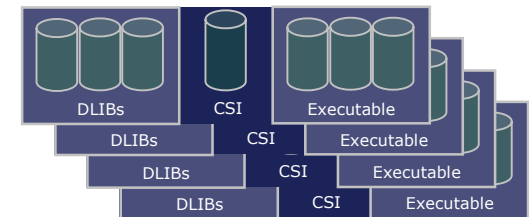
Software
Installation
Service
SIS

Software
Catalog

Acquired
Products and
Maintenance

Policy/
Inventory

Installed Software



<https://supportservices.ca.com>
<https://sdownload.ca.com>



<ftp://scftpd.ca.com>
<ftp://ftp.ca.com>
<ftp://ftpca.ca.com>
<ftp://ftpdnloads.ca.com>
<ftp://supportftp.ca.com>

Requirements for CA CSM (v6)

Site and System Requirements

- Mainframe requirements
 - Hardware
 - Any IBM processor capable of running a currently supported z/OS operating environment. A zIIP (or zAAP) is HIGHLY recommended
 - Software
 - z/OS 1.13, 2.1
 - **IBM 64-bit Java SDK 1.7 for z/OS**
 - SMP/E V3R5 or V3R6
 - JES2 or JES3

Requirements for CA CSM (v6)

Site and System Requirements

- Mainframe requirements
 - Software
 - TCP/IP
 - **CA Common Services r14.1 or r14**, all available maintenance should be applied
 - CETN600 for CSM Software Deployment and Software Configuration services
- Installation Considerations
 - Upgrade from r5.1, v5.0 or r4.1
 - Install CA CSM v6 as a new installation

Demo

CA CSM Resource Center



Available at *CA Support Online*

[Products](#) [Services](#) [Support](#) [Rewrite](#) [Communities](#) [Partners](#)

Site ID: 105246_CA TECHNOLOGIES

[Site Profile](#) | [My Account](#) | [My Download Cart](#) | [Recently Viewed](#) | [Bookmarks](#) | [Launch New Home Page](#)

[Support](#) > [Support By Product](#)

[Print](#) | [Bookmark](#)

Support

[Home](#)

[Advanced Search](#)

[Support By Product](#)

[Open a Case](#)

[View Cases](#)

[Download Center](#)

[Documentation](#)

[Licensing](#)

[CA Technologies Project Management](#)

[User Administration](#)

[CA Programs](#)

[Compatibilities](#)

[Subscriptions](#)

[Contact and Resources](#)

CA Chorus Software Manager Resource Center

Presentations

Here you will find all the information you need to use CA Chorus Software Manager (CA CSM). Whether you're new to CA CSM and are interested in learning more about it or are an experienced user with a "how to" question, the CA CSM Resource Center is for you.

Presentations

FAQs

Here are some recent presentations on New CA Chorus Software Manager (CA CSM) and CA Chorus Software Manager (CA CSM).

CA Chorus Software Manager Update.

For the full text of this document, [Click here](#)

CA Release 1.0.0.0 - New Enhancements to CA Service Delivery.

For

Video Tutorials

Video Tutorials

In the following tutorials, CA CSM experts from CA's Mainframe Solution Center guide you through the process of installing and using CA CSM. If you're new to CA CSM, we recommend that you view each video in sequence. If you have questions about a specific topic, you can also view any of the videos individually. Topics 1-8 will generally be of interest only to those installing and maintaining CA CSM, while topics 9-15 will be of interest to everyone.

These videos should be viewed in conjunction with the CA Chorus Software Manager Admin Guide and other publications available on the CA Chorus Software Manager Bookshelf that corresponds with your release of CA CSM.

1. [Assessing your System for CA CSM](#)

Ready to install CSM? This tutorial discusses how to download and run the CA CSM Prerequisite Validator tool to verify that the necessary software, network, and security prerequisites are present on the system where you'll be installing CA CSM. (running time: 35 minutes)

2. [Preparing your System for CA CSM](#)

Now that your system is ready for CA CSM, this tutorial discusses the pre-installation activities required for the actual installation, including setting up the z/OS Unix environment and gathering configuration information that will be needed during the installation process. (running time: 25 minutes)

3. [Installing CA CSM for the First Time](#)

Thank You



Summer Spaulding

Sr Principal Engineering Services Architect

Summer.Spaulding@ca.com



in